

P. 11

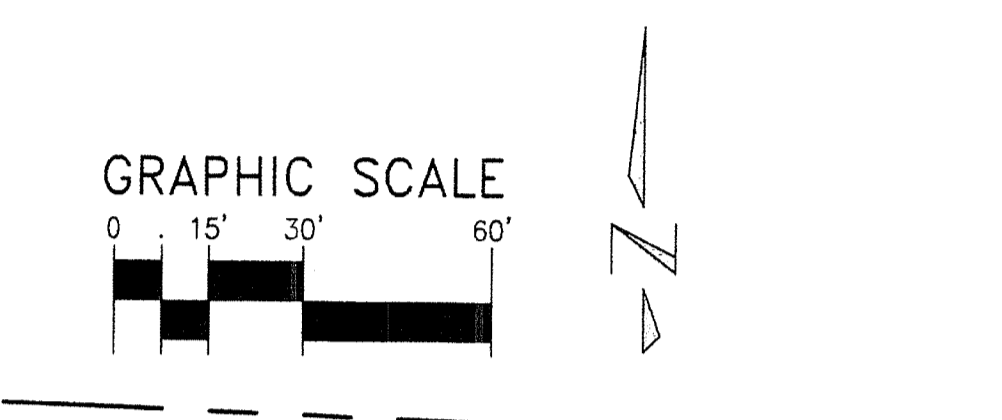
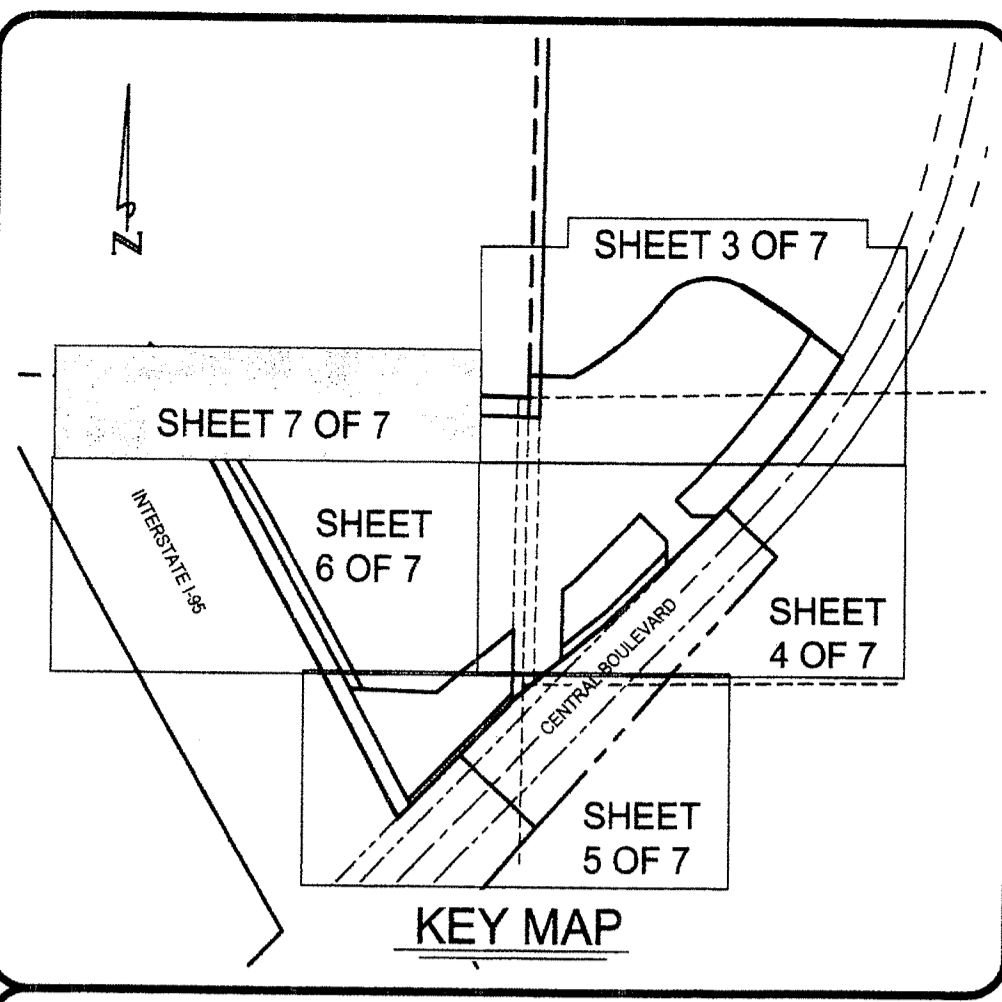
CENTRAL GARDENS PLAT TWO

BEING A REPLAT OF TRACT B, TRACT LB-2, TRACT LB-3, TRACT LB-5, TRACT LB-6, TRACT LB-7, TRACT P-2, TRACT P-3 & TRACT OS-1, CENTRAL GARDENS, PLAT BOOK 115, PAGES 190 THROUGH 195 & BEING A PORTION OF SECTIONS 35 & 36, TOWNSHIP 41 SOUTH, RANGE 42 EAST, CITY OF PALM BEACH GARDENS, PALM BEACH COUNTY, FLORIDA
SHEET 7 OF 7
NOVEMBER 2015

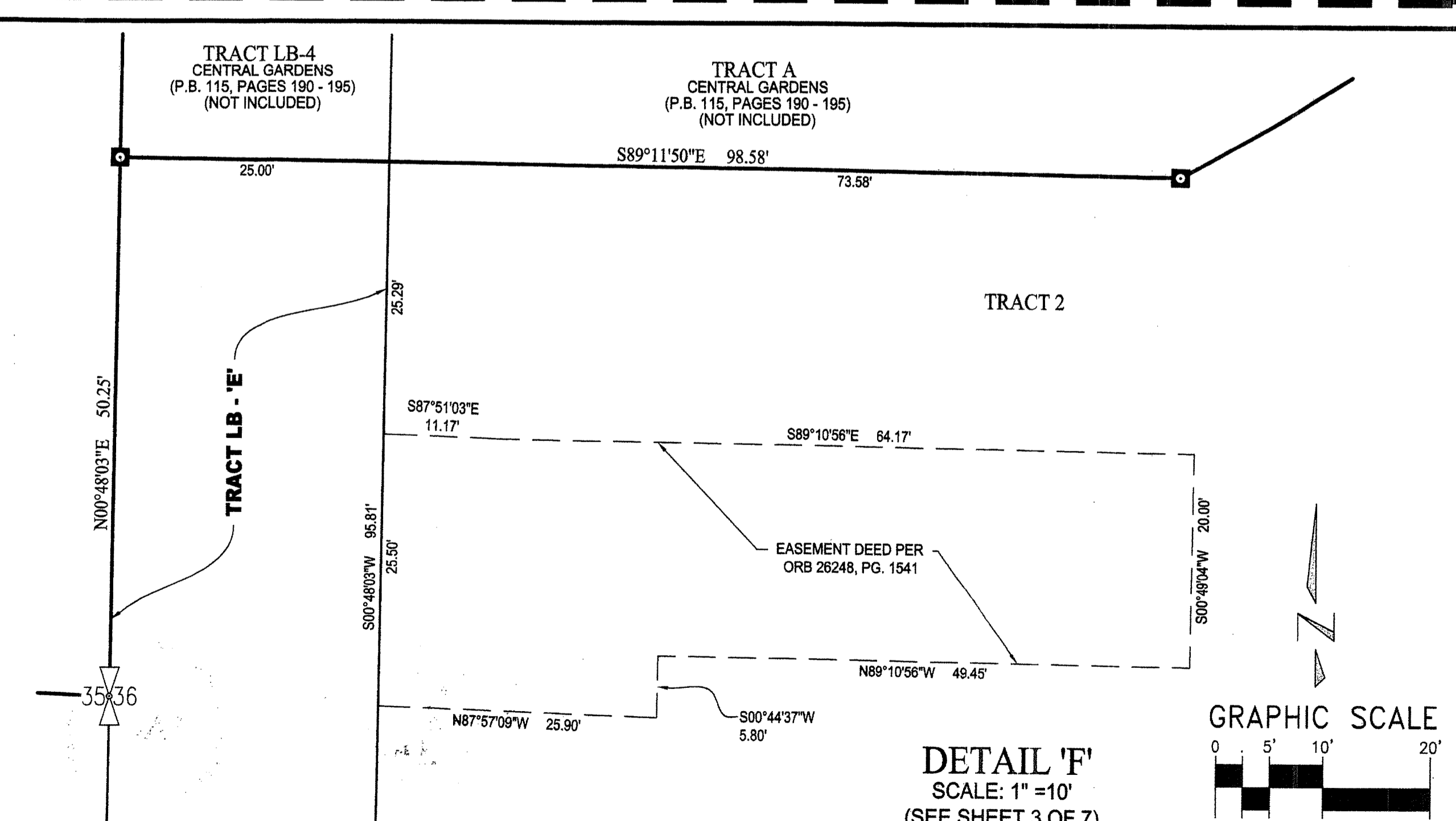
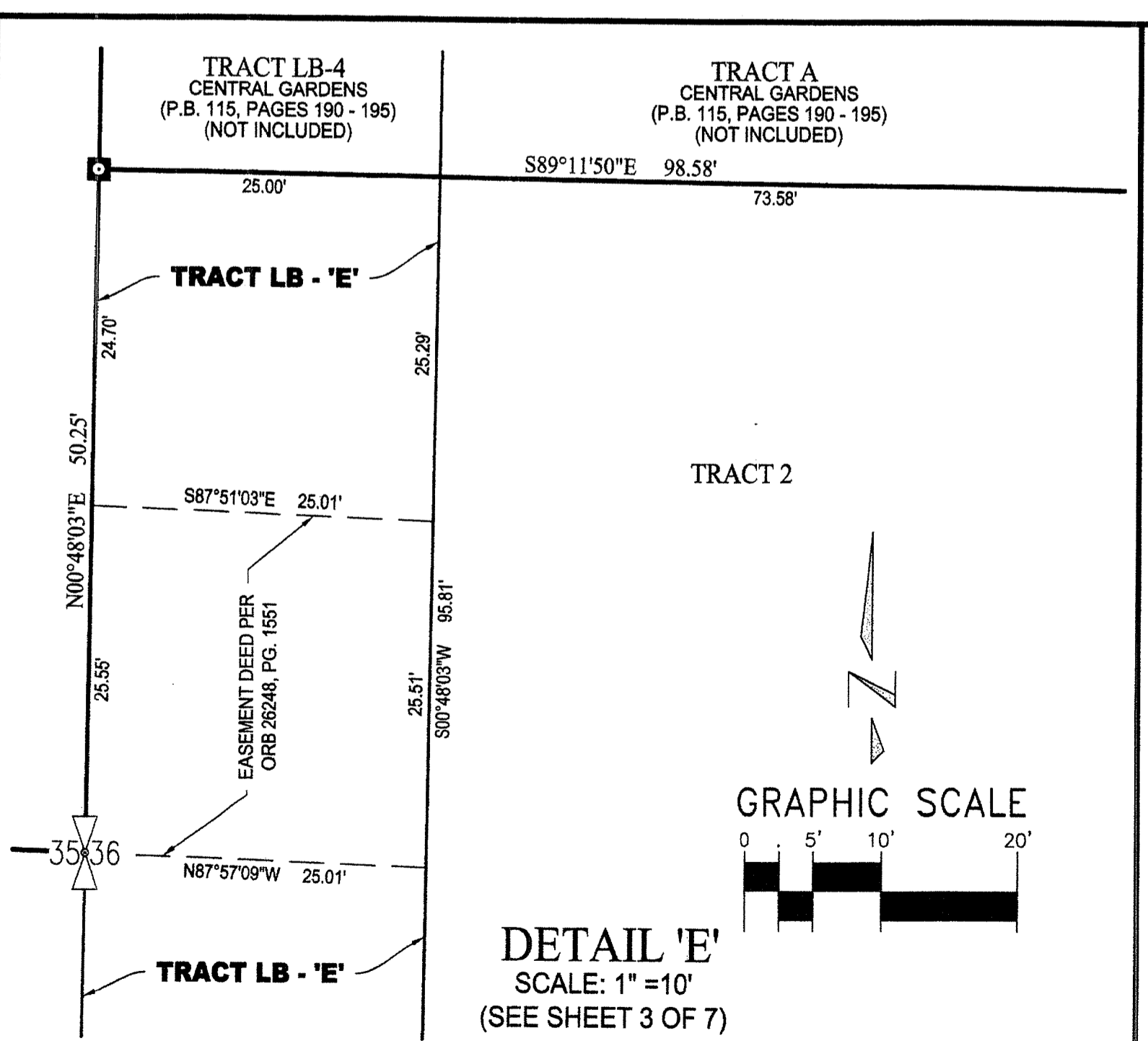
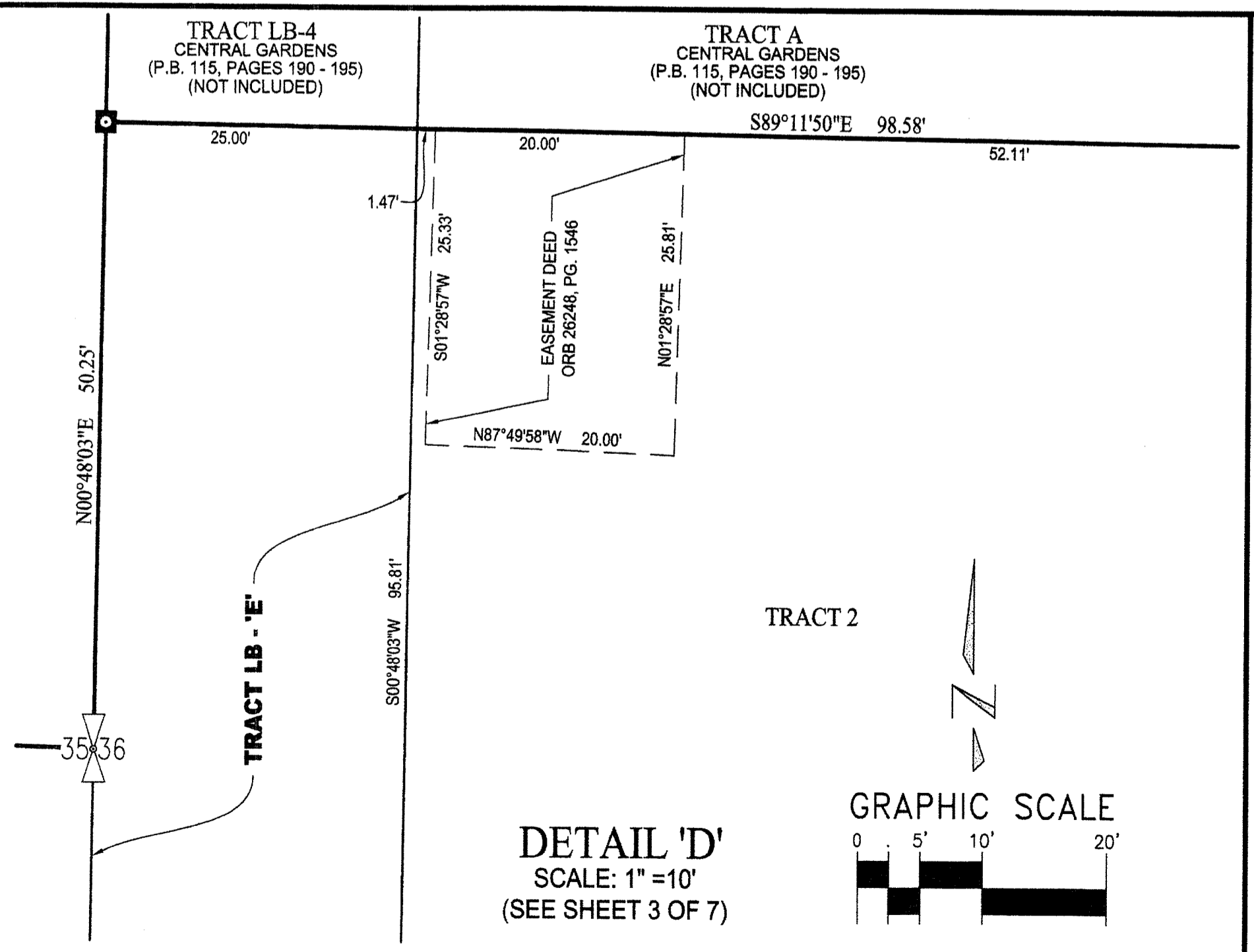
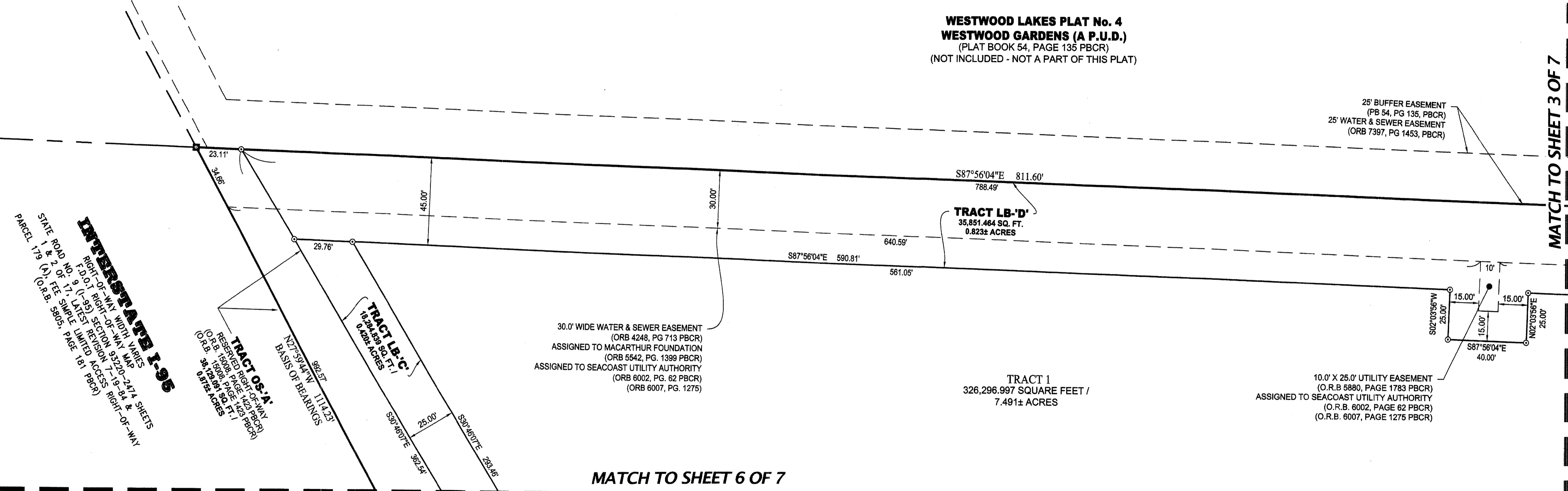
STATE OF FLORIDA
COUNTY OF PALM BEACH
THIS PLAT WAS FILED
FOR RECORD AT _____ M.
THIS DAY OF _____, 2015
AND DULY RECORDED IN PLAT
NO. _____ ON PAGES _____
THRU _____

SHARON R. BOCK
CLERK AND COMPTROLLER

BY _____ D.C.



TRACTS	SQUARE FOOTAGE	ACRES
TRACT 1	326,296.997	7.491
TRACT 2	224,943.856	5.164
LB-'A'	43,234.080	0.993
LB-'B'	7,246.909	0.166
LB-'C'	18,284.839	0.420
LB-'D'	35,851.464	0.823
LB-'E'	2,387.987	0.055
L-'A'	29,592.412	0.679
L-'B'	549.847	0.013
LM-'A'	4,527.020	0.104
LM-'B'	4,536.882	0.104
LM-'C'	4,920.846	0.113
P-'A'	29,224.344	0.671
P-'B'	58,775.894	1.349
OS-'A'	38,129.091	0.875
TOTAL	828,502.468	19.020



LEGEND OF SYMBOLS:
 □ = 4"x4" CONC. MON. STAMPED "P.R.M. LB4897" OR AS NOTED
 △ = MAG NAIL & DISK STAMPED "P.R.M. LB 4897" OR AS NOTED
 ○ = CHANGES OF DIRECTION, P.C.'S OR P.T.'S FOR TRACT LINES
 ● = CHANGES OF DIRECTION, P.C.'S OR P.T.'S FOR EASEMENT LINES

PROPERTY CONTROL ABBREVIATIONS:
 P.C.P. = PERMANENT CONTROL POINT
 P.R.M. = PERMANENT REFERENCE MONUMENT
 CONC. = CONCRETE
 MON. = MONUMENT
 M.N.D. = MAG NAIL & DISK

LEGEND OF ABBREVIATIONS:
 ° = DEGREES
 ' = MINUTES
 " = SECONDS
 R = RADIUS
 Δ = DELTA
 L = ARC LENGTH
 CB = CHORD BEARING
 P.C. = POINT OF CURVATURE
 C/L = CENTERLINE
 P.R.C. = POINT OF REVERSE CURVE
 RAD. = RADIAL
 N.R. = NON-RADIAL
 T = TANGENT
 ARITHMETIC / ANNOTATION ABBREVIATIONS
 N.T. = NON-TANGENT
 P.O.B. = POINT OF BEGINNING
 P.O.T. = POINT OF TERMINUS
 R.P.B. = ROAD PLAT BOOK
 O.A. = OVERALL
 O.R.B. = OFFICIAL RECORD BOOK
 PG. = PAGE
 P.O.C. = POINT OF COMMENCEMENT
 P.O.B. = POINT OF BEGINNING
 P.O.T. = POINT OF TERMINUS
 R.P.B. = ROAD PLAT BOOK
 L.B. = LICENSED BUSINESS
 P.S.M. = PROFESSIONAL SURVEYOR & MAPPER

EASEMENT / MISCELLANEOUS ABBREVIATIONS:
 L.A.E. = LIMITED ACCESS EASEMENT
 L.B.E. = LANDSCAPE BUFFER EASEMENT
 L.M.E. = LAKE MAINTENANCE EASEMENT
 S.L.E. = SANITARY SEWER LINE EASEMENT
 W.L.E. = WATER LINE EASEMENT
 P.B.C. = PALM BEACH COUNTY RECORDS
 D.E. = DRAINAGE EASEMENT
 U.E. = UTILITY EASEMENT
 S.U.A. = SEACOAST UTILITY AUTHORITY
 F.P.L. = FLORIDA POWER & LIGHT COMPANY

KESHAVARZ & ASSOCIATES
 Civil Engineers • Land Surveyors
 711 North Dixie Highway, Suite 201
 West Palm Beach, Florida 33401
 Tel: (561) 689-8600 Fax: (561) 689-2156

THIS INSTRUMENT WAS PREPARED BY SCOTT E. FRYSON, IN AND FOR THE OFFICES OF KESHAVARZ & ASSOCIATES, INC., 711 NORTH DIXIE HIGHWAY, SUITE 201, WEST PALM BEACH, FLORIDA 33401 TELEPHONE (561) 689-8600.

DATE: 01/30/15	CHECKED: SB	PROJECT No. 13-1005	SHEET No. 7 OF 7
SCALE: 1" = 30'	APPROVED: SB	DWG No: D13-1005P	
DRAWN: SB/RB			