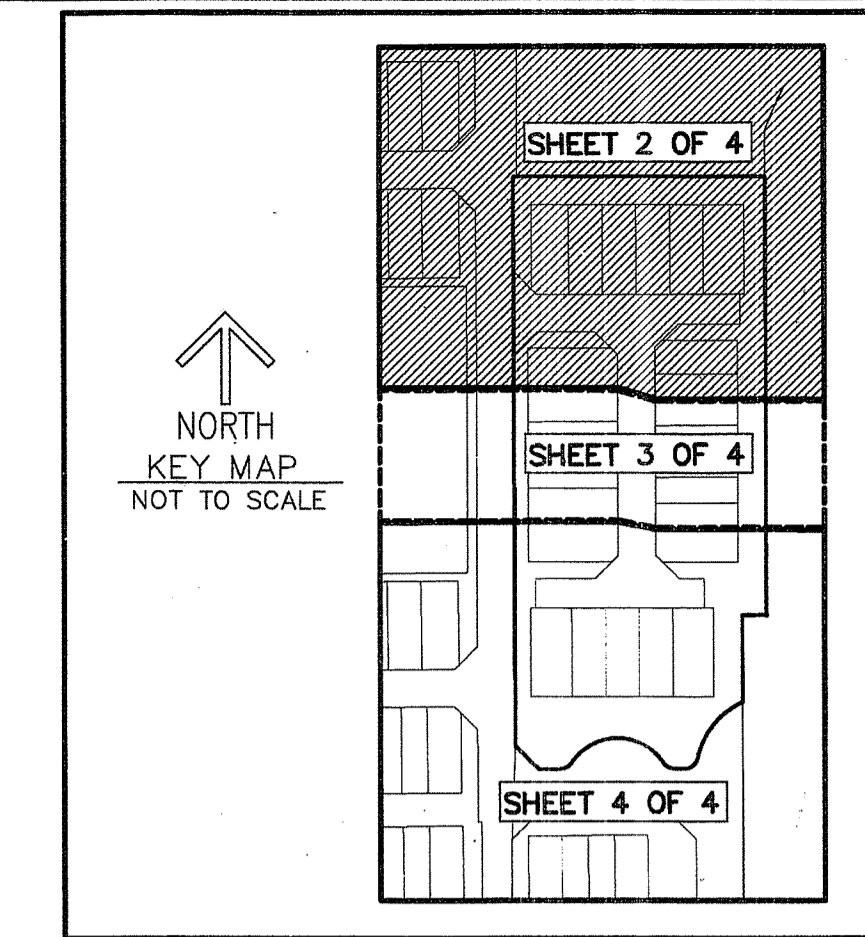


0930-007 THIS INSTRUMENT PREPARED BY  
 DAVID P. LINDLEY  
 OF  
**CAULFIELD and WHEELER, INC.**  
 SURVEYORS - ENGINEERS - PLANNERS  
 7900 GLADES ROAD, SUITE 100  
 BOCA RATON, FLORIDA 33434 - (561)392-1991

# VILLAGGIO ISLES PARCEL E REPLAT

VILLAGGIO ISLES PUD, A PLANNED UNIT DEVELOPMENT  
 BEING A REPLAT OF PARCEL E AND TRACT L3, VILLAGGIO ISLES PARCEL D REPLAT,  
 AS RECORDED PLAT BOOK 119, PAGES 111 THROUGH 114 OF THE PUBLIC RECORDS OF PALM BEACH COUNTY, FLORIDA,  
 LYING IN SECTION 16 TOWNSHIP 46 SOUTH, RANGE 42 EAST, PALM BEACH COUNTY, FLORIDA

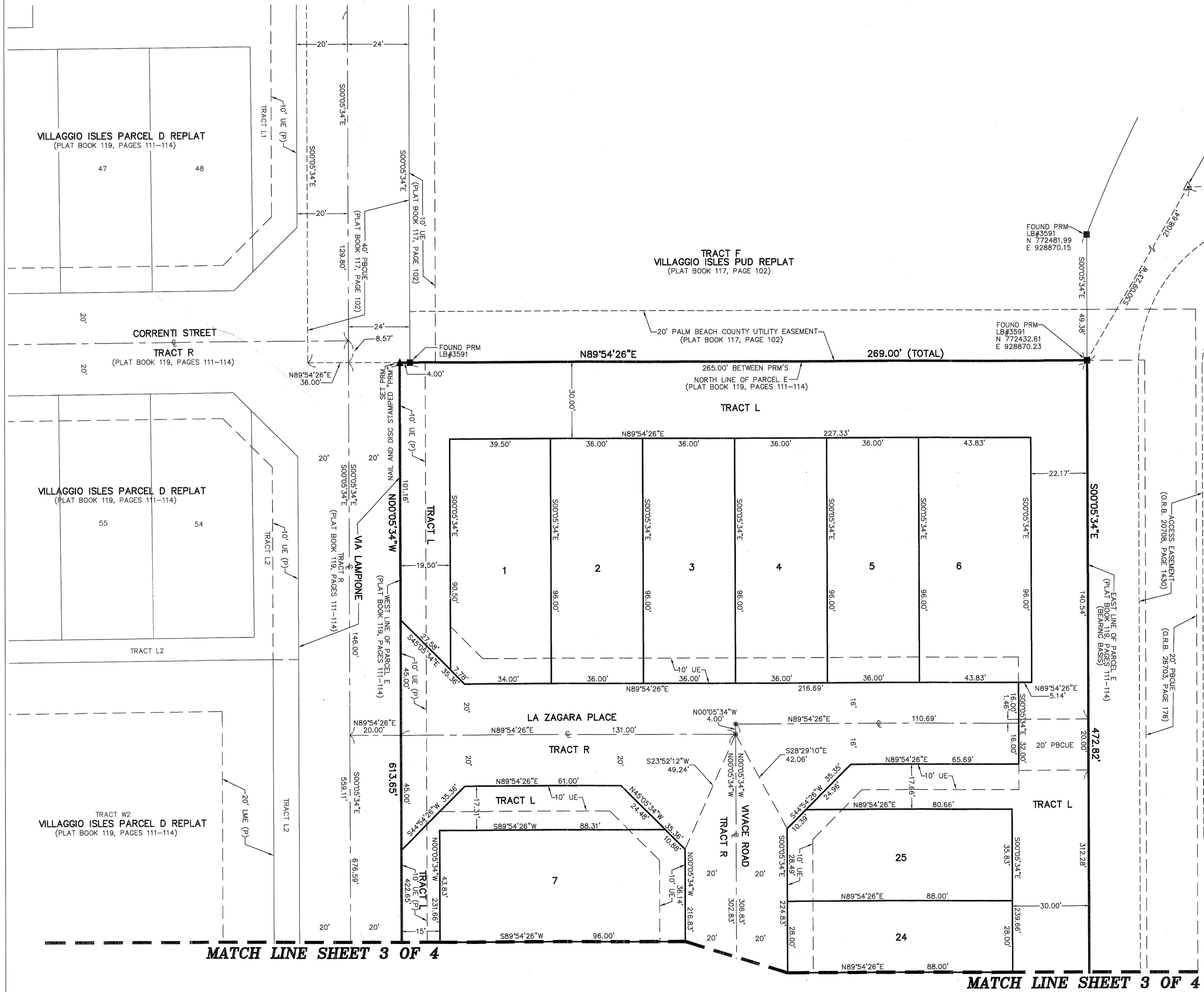


199

STATE OF FLORIDA  
 COUNTY OF PALM BEACH  
 THIS PLAT WAS FILED FOR  
 RECORD AT \_\_\_\_\_ M.  
 THIS \_\_\_\_\_ DAY OF \_\_\_\_\_  
 A.D. 20\_\_\_\_ AND DULY RECORDED  
 IN PLAT BOOK \_\_\_\_\_ ON  
 PAGES \_\_\_\_\_ AND \_\_\_\_\_  
 SHARON R. BOCK  
 CLERK AND COMPTROLLER

BY: \_\_\_\_\_  
 DEPUTY CLERK

**SHEET 2 OF 4**

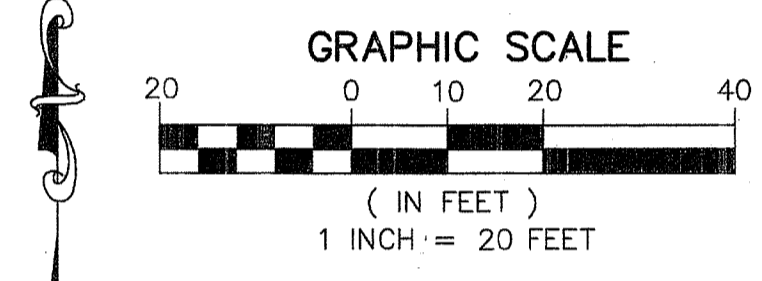


FOUND PALM BEACH COUNTY  
 HORIZONTAL CONTROL POINT "EMERALD"  
 N 774255.863  
 E 929929.591

FOUND PALM BEACH COUNTY  
 HORIZONTAL CONTROL POINT "FAIRWAY"  
 N 774289.327  
 E 932507.861

FOUND PRM  
 LB#3591  
 N 772481.99  
 E 928870.15

FOUND PRM  
 LB#3591  
 N 772432.61  
 E 928870.23



**NOTES**  
**COORDINATES, BEARINGS AND DISTANCES**  
 COORDINATES SHOWN ARE GRID  
 DATUM = NAD 83 1990 ADJUSTMENT  
 ZONE = FLORIDA EAST  
 LINEAR UNIT = US SURVEY FEET  
 COORDINATE SYSTEM 1983 STATE PLANE  
 TRANSVERSE MERCATOR PROJECTION  
 ALL DISTANCES ARE GROUND  
 SCALE FACTOR = 1.0000265  
 GROUND DISTANCE X SCALE FACTOR = GRID DISTANCE  
 BEARINGS AS SHOWN HEREON ARE GRID DATUM,  
 NAD 83 1990 ADJUSTMENT, FLORIDA EAST ZONE.

A PORTION OF  
 PLAT OF SUBDIVISION OF S.E. 1/4 AND W. 1/2 OF  
 THE S.W. 1/4 OF SECTION 16  
 TOWNSHIP 46S RANGE 42E  
 (PLAT BOOK 1, PAGE 158)

**LEGEND/ABBREVIATIONS**

- ⊙ - CENTERLINE
- Δ - DELTA (CENTRAL ANGLE)
- AE - ACCESS EASEMENT
- CB - CHORD BEARING
- CD - CHORD DISTANCE
- DE - DRAINAGE EASEMENT
- L - ARC LENGTH
- LB - LICENSED BUSINESS
- LM/AE - LAKE MAINTENANCE ACCESS EASEMENT
- LME - LAKE MAINTENANCE EASEMENT
- O.R.B. - OFFICIAL RECORD BOOK
- PBCUE - PALM BEACH COUNTY UTILITY EASEMENT
- R - RADIUS
- UE - UTILITY EASEMENT
- (P) - DENOTES VILLAGGIO ISLES PARCEL D REPLAT,  
 AS RECORDED IN PLAT BOOK 119, PAGES 111-114,  
 PALM BEACH COUNTY RECORDS
- PRM - DENOTES PERMANENT REFERENCE MONUMENT  
 4" x 4" x 24" CONCRETE MONUMENT STAMPED  
 LB3591 UNLESS OTHERWISE NOTED
- ⊙ - DENOTES PERMANENT CONTROL POINT  
 NAIL AND METAL DISK STAMPED LB3591
- ▲ - DENOTES PERMANENT REFERENCE MONUMENT  
 NAIL AND DISC STAMPED "PRM" LB 3591

MATCH LINE SHEET 3 OF 4

MATCH LINE SHEET 3 OF 4