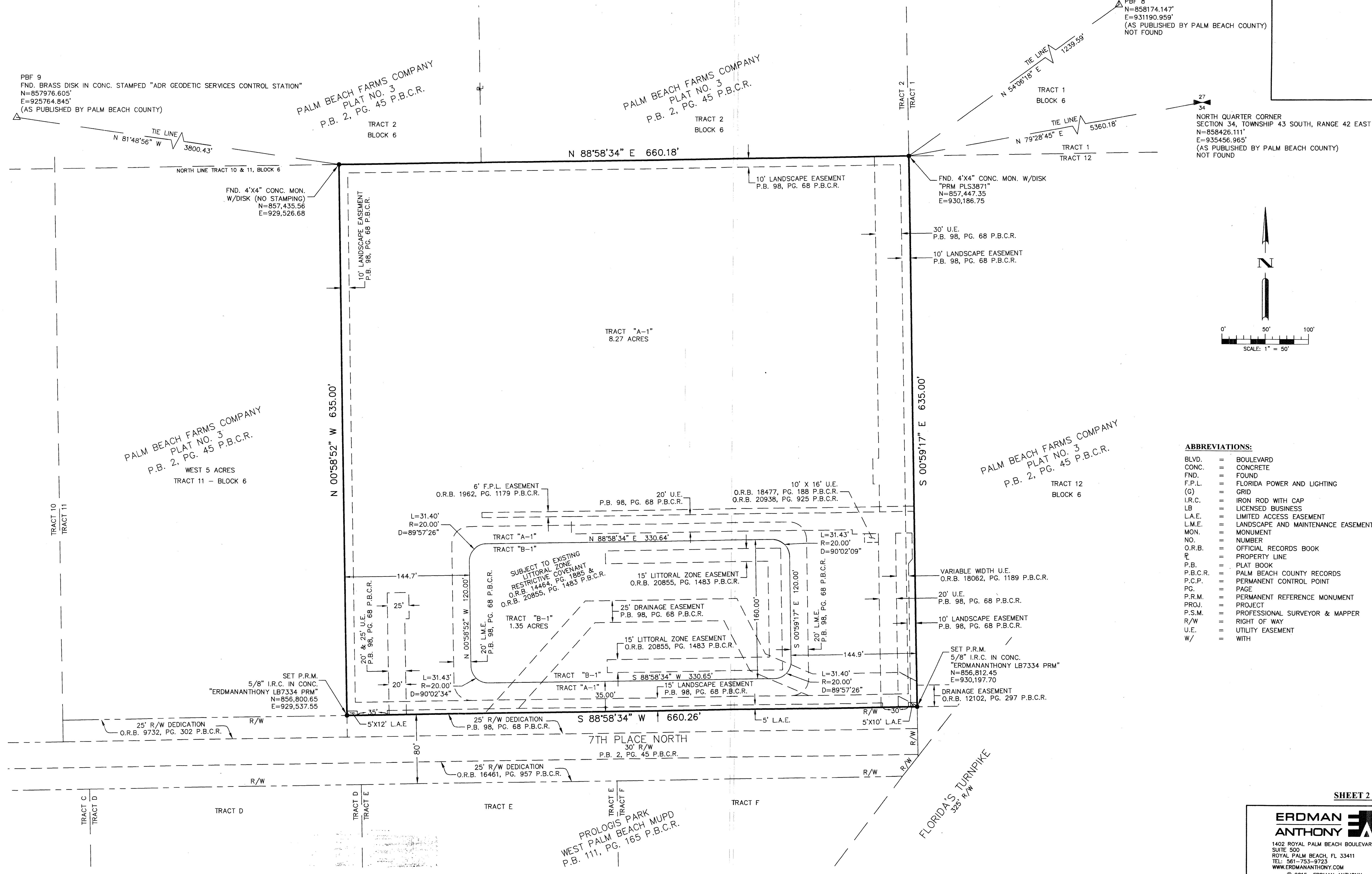


WHITESIDE INDUSTRIAL PARK

BEING A REPLAT OF TRACTS A, B, AND C OF HUDSON-SPARLING PLAT AS RECORDED IN PLAT BOOK 98, PAGE 68 OF THE PALM BEACH COUNTY OFFICIAL PUBLIC RECORDS, AND LYING WITHIN SECTION 33, TOWNSHIP 43 SOUTH, RANGE 42 EAST, PALM BEACH COUNTY, FLORIDA



PBF 7
FND. PALM BEACH COUNTY BRASS
TRIANGLE DISK IN CONC.
N=860857.012'
E=931146.876'
(AS PUBLISHED BY PALM BEACH COUNTY)

PBF 8
N=858174.147'
E=931190.959'
(AS PUBLISHED BY PALM BEACH COUNTY)
NOT FOUND

PBF 9
FND. BRASS DISK IN CONC. STAMPED "ADR GEODETIC SERVICES CONTROL STATION"
N=857976.605'
E=925764.845'
(AS PUBLISHED BY PALM BEACH COUNTY)

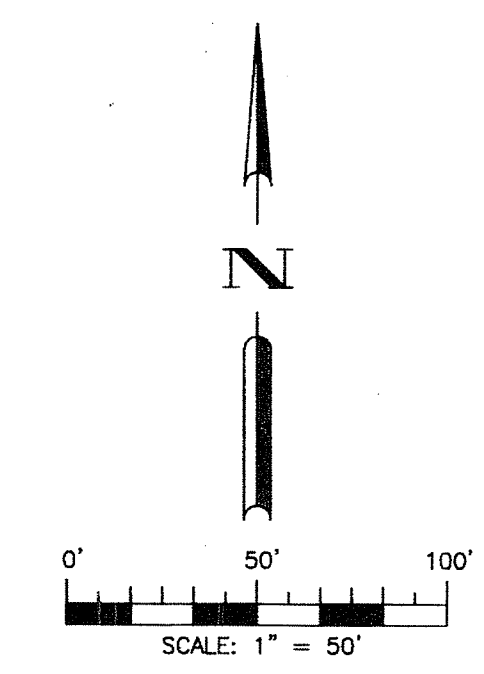
PALM BEACH FARMS COMPANY
PLAT NO. 3
P.B. 2, PG. 45 P.B.C.R.
TRACT 2
BLOCK 6

PALM BEACH FARMS COMPANY
PLAT NO. 3
P.B. 2, PG. 45 P.B.C.R.
TRACT 2
BLOCK 6

PALM BEACH FARMS COMPANY
PLAT NO. 3
P.B. 2, PG. 45 P.B.C.R.
TRACT 12
BLOCK 6

PALM BEACH FARMS COMPANY
PLAT NO. 3
P.B. 2, PG. 45 P.B.C.R.
WEST 5 ACRES
TRACT 11 - BLOCK 6

NORTH QUARTER CORNER
SECTION 34, TOWNSHIP 43 SOUTH, RANGE 42 EAST
N=858426.111'
E=935456.965'
(AS PUBLISHED BY PALM BEACH COUNTY)
NOT FOUND



- ABBREVIATIONS:**
- BLVD. = BOULEVARD
 - CONC. = CONCRETE
 - FND. = FOUND
 - F.P.L. = FLORIDA POWER AND LIGHTING
 - (G) = GRID
 - I.R.C. = IRON ROD WITH CAP
 - LB = LICENSED BUSINESS
 - L.A.E. = LIMITED ACCESS EASEMENT
 - L.M.E. = LANDSCAPE AND MAINTENANCE EASEMENT
 - MON. = MONUMENT
 - NO. = NUMBER
 - O.R.B. = OFFICIAL RECORDS BOOK
 - PL = PROPERTY LINE
 - P.B. = PLAT BOOK
 - P.B.C.R. = PALM BEACH COUNTY RECORDS
 - P.C.P. = PERMANENT CONTROL POINT
 - PG. = PAGE
 - P.R.M. = PERMANENT REFERENCE MONUMENT
 - PROJ. = PROJECT
 - P.S.M. = PROFESSIONAL SURVEYOR & MAPPER
 - R/W = RIGHT OF WAY
 - U.E. = UTILITY EASEMENT
 - W/ = WITH

PROLOGIS PARK
WEST PALM BEACH MUPD
P.B. 111, PG. 165 P.B.C.R.