

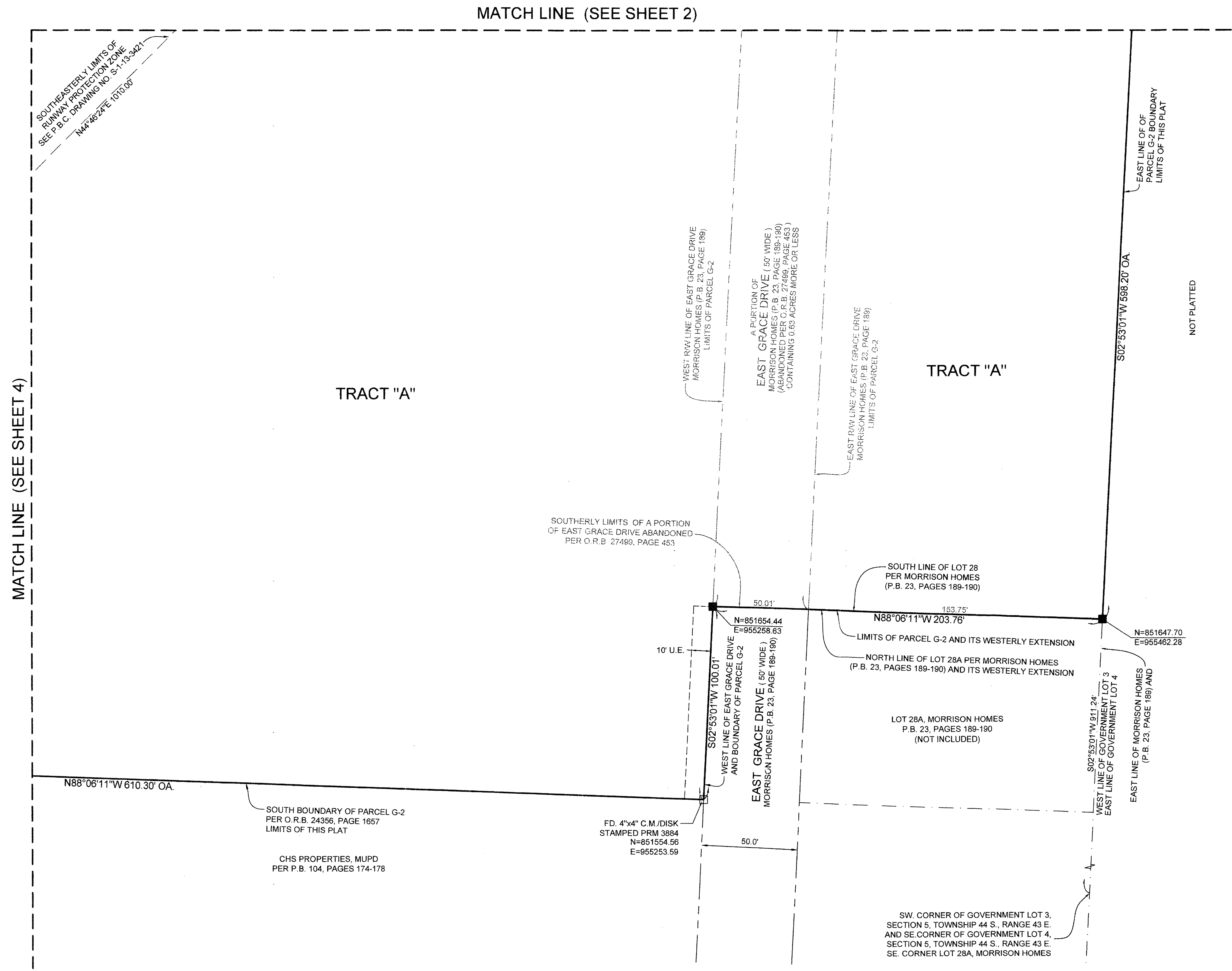
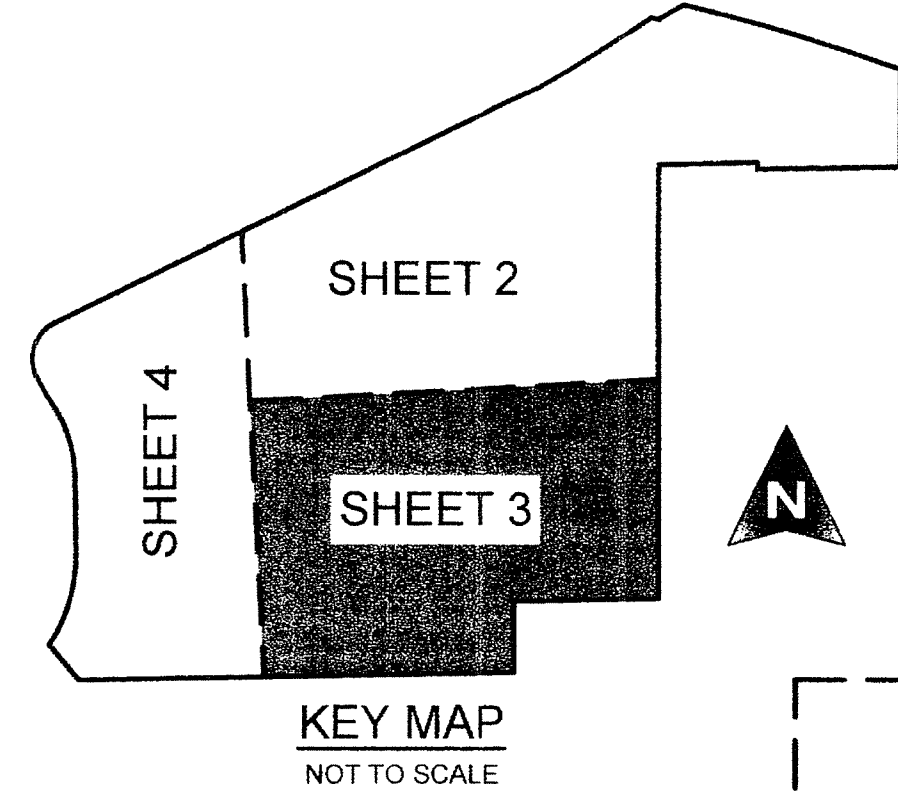
PBIA PARCEL G

LYING IN SECTION 5, TOWNSHIP 44 SOUTH, RANGE 43 EAST, PALM BEACH COUNTY, FLORIDA, BEING ALL OF PARCEL G-2 OF THE AFFIDAVIT OF WAIVER (PLAT WAIVER) AS RECORDED IN OFFICIAL RECORD BOOK 24356, PAGE 1657, PUBLIC RECORDS OF PALM BEACH COUNTY, FLORIDA, AND BEING A RE-PLAT OF A PORTION OF LOT 18, MORRISON HOMES AS RECORDED IN PLAT BOOK 23, PAGES 189 AND 190, AS DESCRIBED IN OFFICIAL RECORD BOOK 26819, PAGE 868, PUBLIC RECORDS OF PALM BEACH COUNTY, FLORIDA AND A PORTION OF GOVERNMENT LOT 3, IN SAID SECTION 5, TOWNSHIP 44 SOUTH, RANGE 43 EAST AS DESCRIBED IN OFFICIAL RECORD BOOK 26819, PAGE 868, PUBLIC RECORDS OF PALM BEACH COUNTY, FLORIDA, AND A PORTION OF EAST GRACE DRIVE OF SAID MORRISON HOMES, ABANDONED PER OFFICIAL RECORD BOOK 27499, PAGE 453, PUBLIC RECORDS OF PALM BEACH COUNTY, FLORIDA.

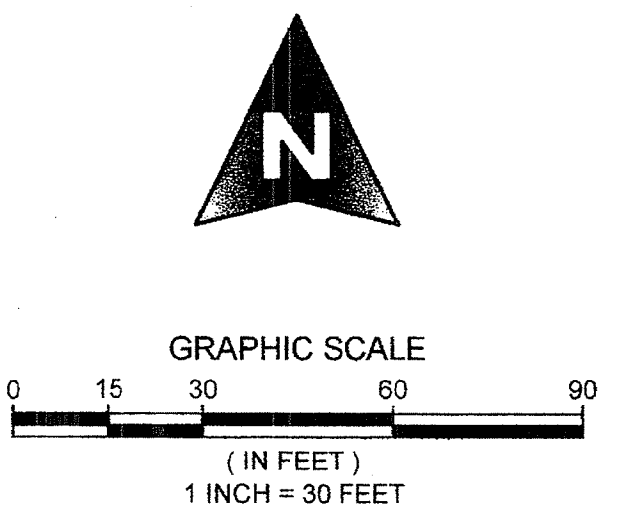
SHEET 3 OF 4

185

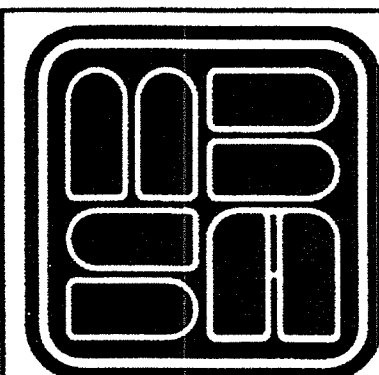
COUNTY OF PALM BEACH)
STATE OF FLORIDA) SS
THIS PLAT WAS FILED FOR RECORD AT)
M. THIS) DAY OF)
2015, AND DULY)
RECORDED IN PLAT BOOK NO.)
ON PAGE) THRU)
SHARON R. BOCK,
CLERK AND COMPTROLLER
BY:) D.C.



COORDINATES NOTE:
STATE PLANE COORDINATES SHOWN ARE GRID
DATUM = NAD 83, 1990 ADJUSTMENT
ZONE = FLORIDA EAST
LINEAR UNITS = US SURVEY FOOT
COORDINATE SYSTEM 1983 STATE PLANE TRANSVERSE MERCATOR PROJECTION
ALL DISTANCES ARE GROUND
PROJECT SCALE FACTOR = 1.0000429
GROUND DISTANCE X SCALE FACTOR = GRID DISTANCE
BEARINGS AS SHOWN HEREON ARE GRID DATUM, NAD 83 1990 ADJUSTMENT,
FLORIDA EAST ZONE.



SHEET 3 OF 4



MICHAEL B. SCHORAH & ASSOCIATES, INC.
1850 FOREST HILL BLVD., SUITE 206
WEST PALM BEACH, FLORIDA 33406
E# 2438 TEL. (561) 968-0080 FAX. (561) 642-9726 LB# 2438

PBIA PARCEL G