

BORDERLINE

BEING A REPLAT OF LOT "A", LAKE SHORE ESTATES, PLAT BOOK 25, PAGE 26 (P.B.C.P.R.)
AND A PORTION OF SECTION 5, TOWNSHIP 46 SOUTH, RANGE 43 EAST, CITY OF DELRAY
BEACH, PALM BEACH COUNTY, FLORIDA.

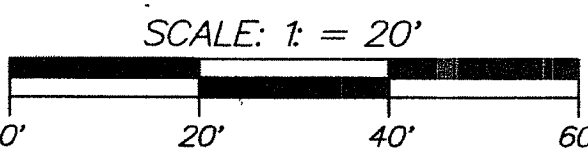
JUNE, 2015
SHEET 2 OF 2

THIS INSTRUMENT WAS PREPARED BY PAUL D. ENGLE,
IN THE OFFICE OF O'BRIEN, SUITER & O'BRIEN, INC.,
955 N.W. 17TH AVENUE, SUITE K1, DELRAY BEACH,
FLORIDA 33445 (561) 276-4501

156

COUNTY OF PALM BEACH
STATE OF FLORIDA

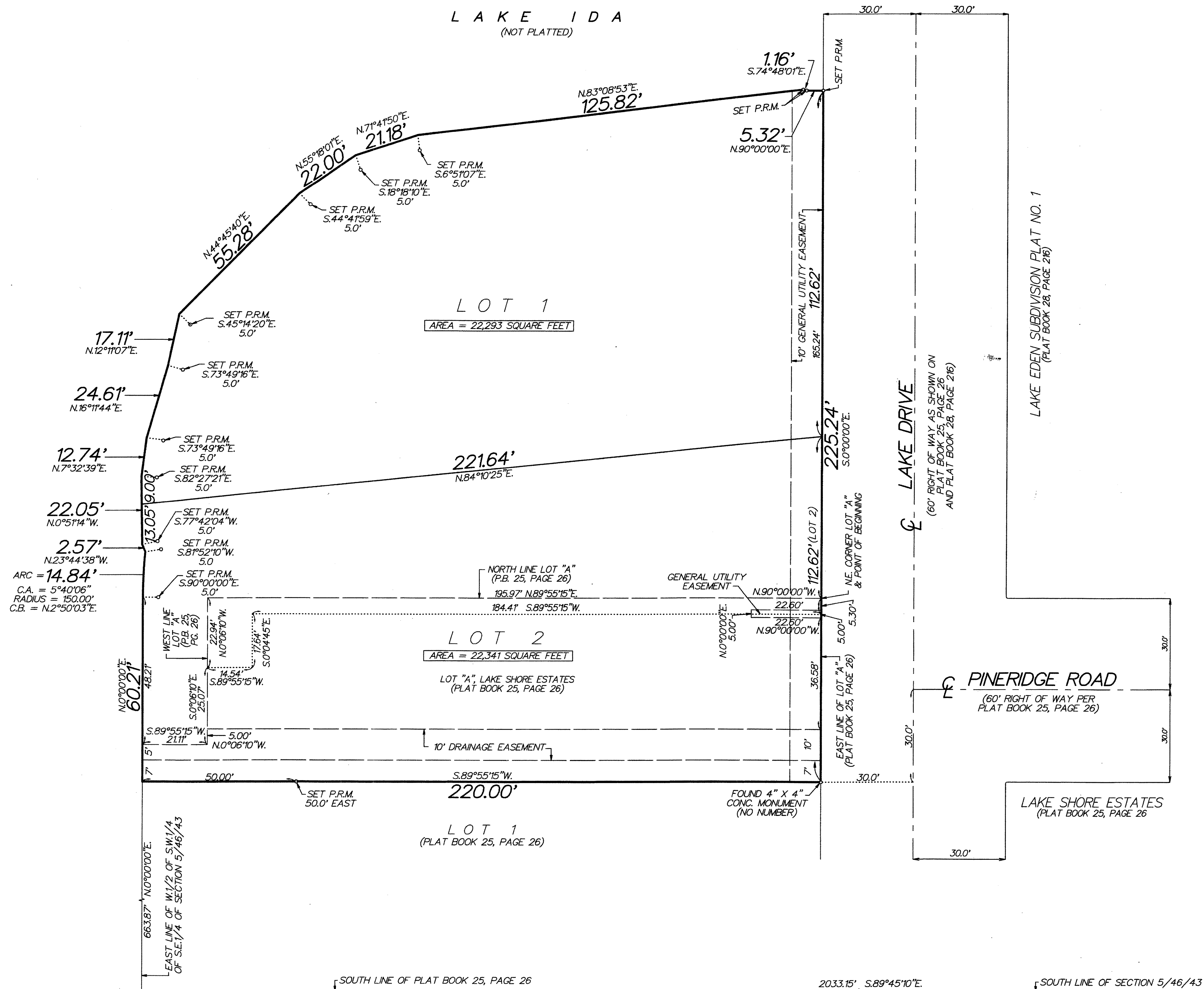
THIS PLAT WAS FILED FOR RECORD AT _____
THIS _____ DAY OF _____
2015, AND FULLY RECORDED IN PLAT BOOK NO. _____
ON PAGE _____
SHARON R. BOCK, CLERK AND CONTROLLER
BY _____ D.C.



LEGEND:

- C = CENTERLINE
- P.B.C.P.R. = PALM BEACH COUNTY PUBLIC RECORDS
- CONC. = CONCRETE
- P.B. = PLAT BOOK
- P.R.M. = PERMANENT REFERENCE MONUMENT (4" X 4" CONCRETE MONUMENT STAMPED P.R.M. LB353)
- THE EAST LINE OF LOTS 1 AND 2 ARE ASSUMED TO BEAR S.0°00'00"E.
- SECTION 5/46/43 = SECTION 5, TOWNSHIP 46 SOUTH, RANGE 43 EAST

LAKE IDA
(NOT PLATTED)



SE CORNER OF
SECTION 5/46/43
(CALCULATED
POSITION)