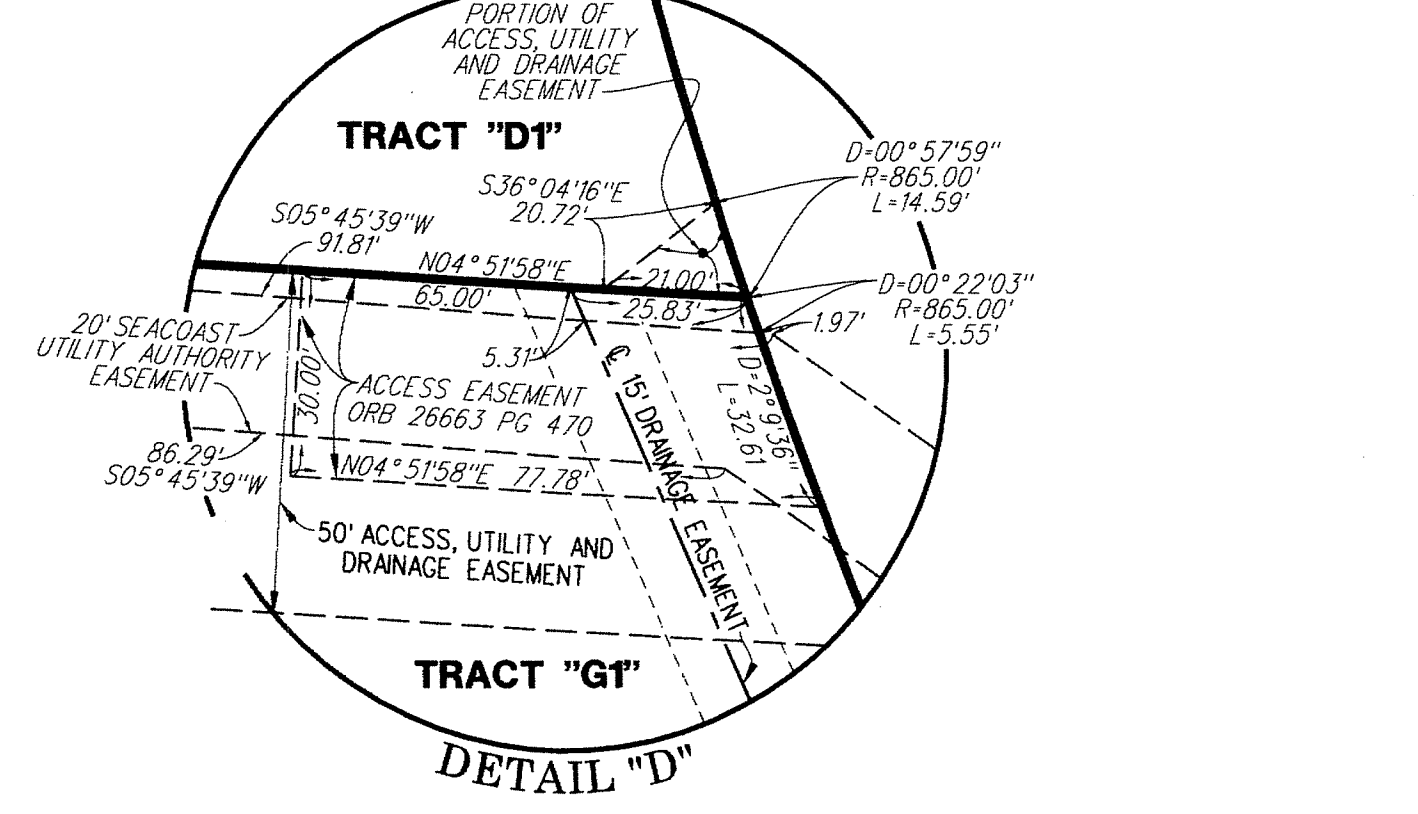
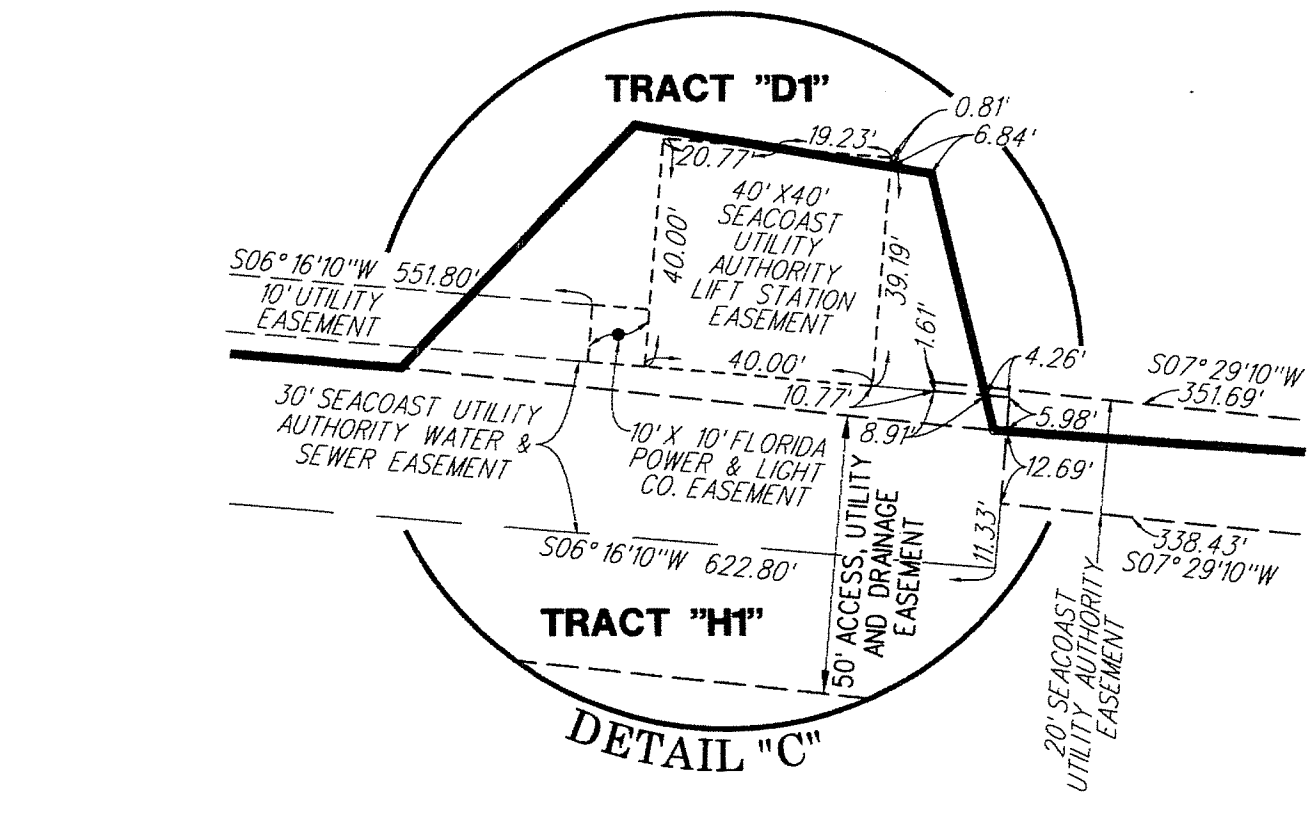
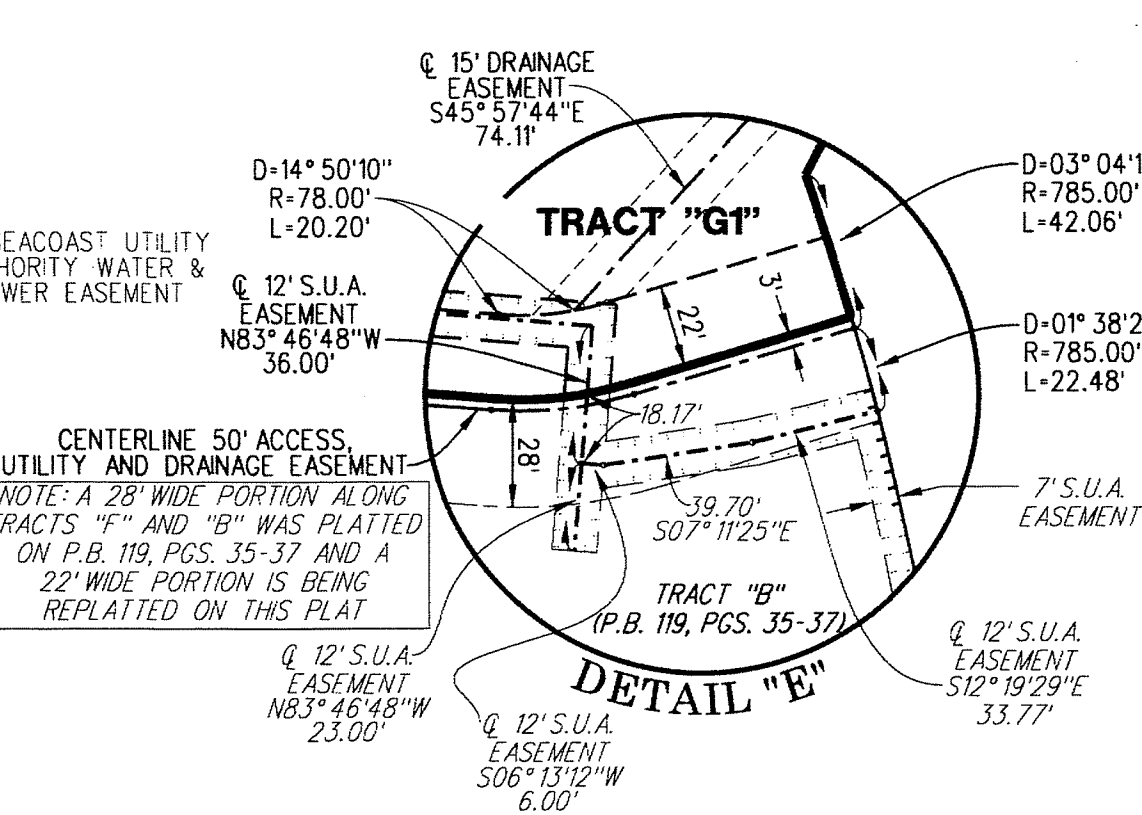
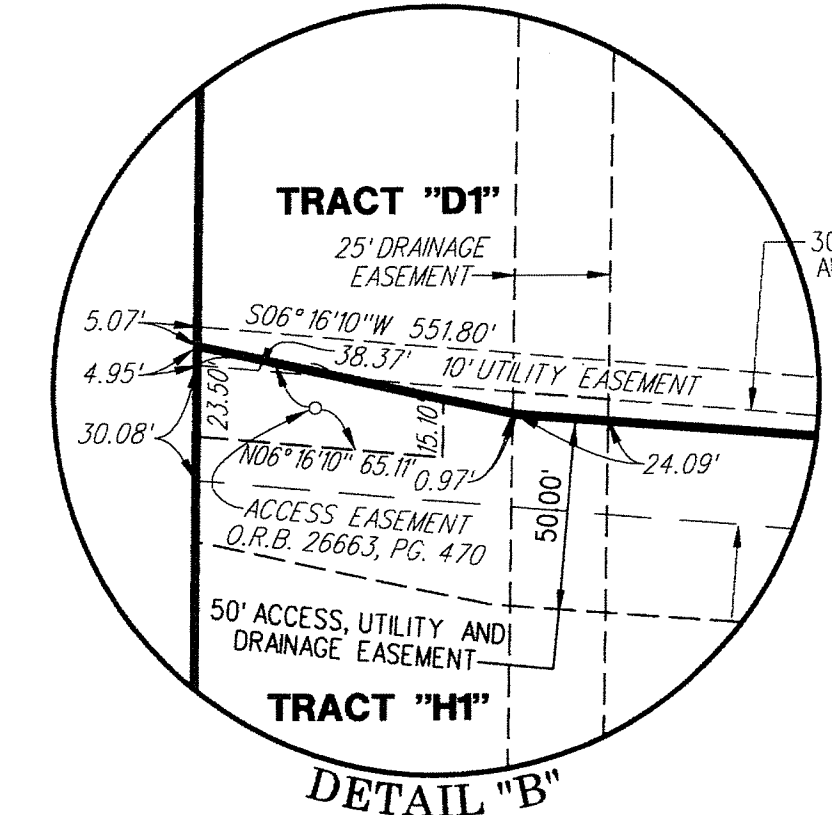
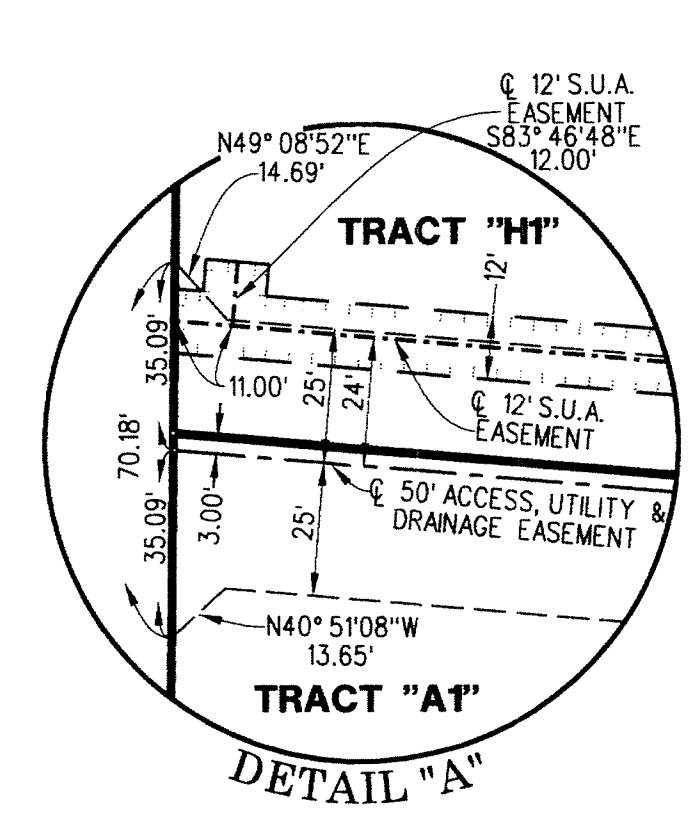
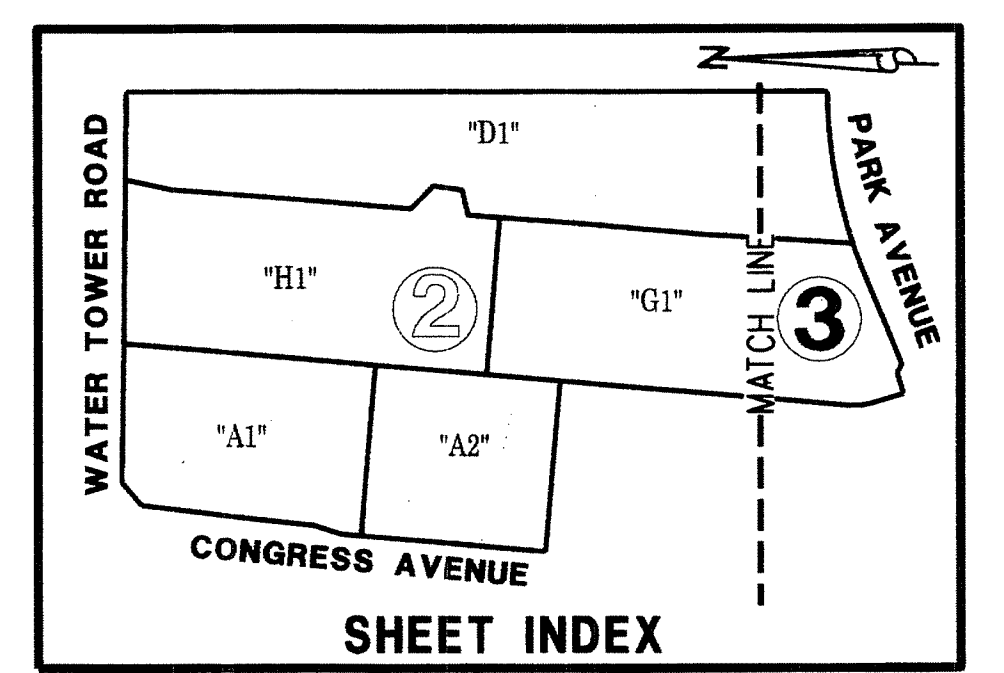
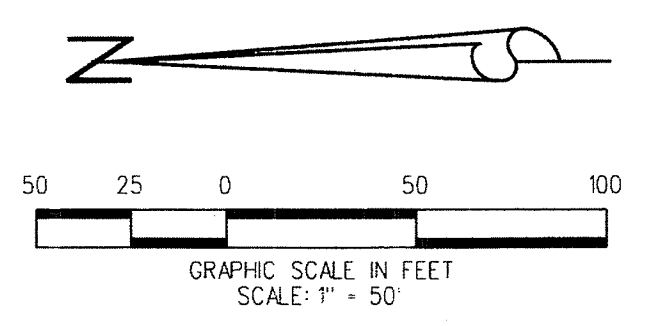
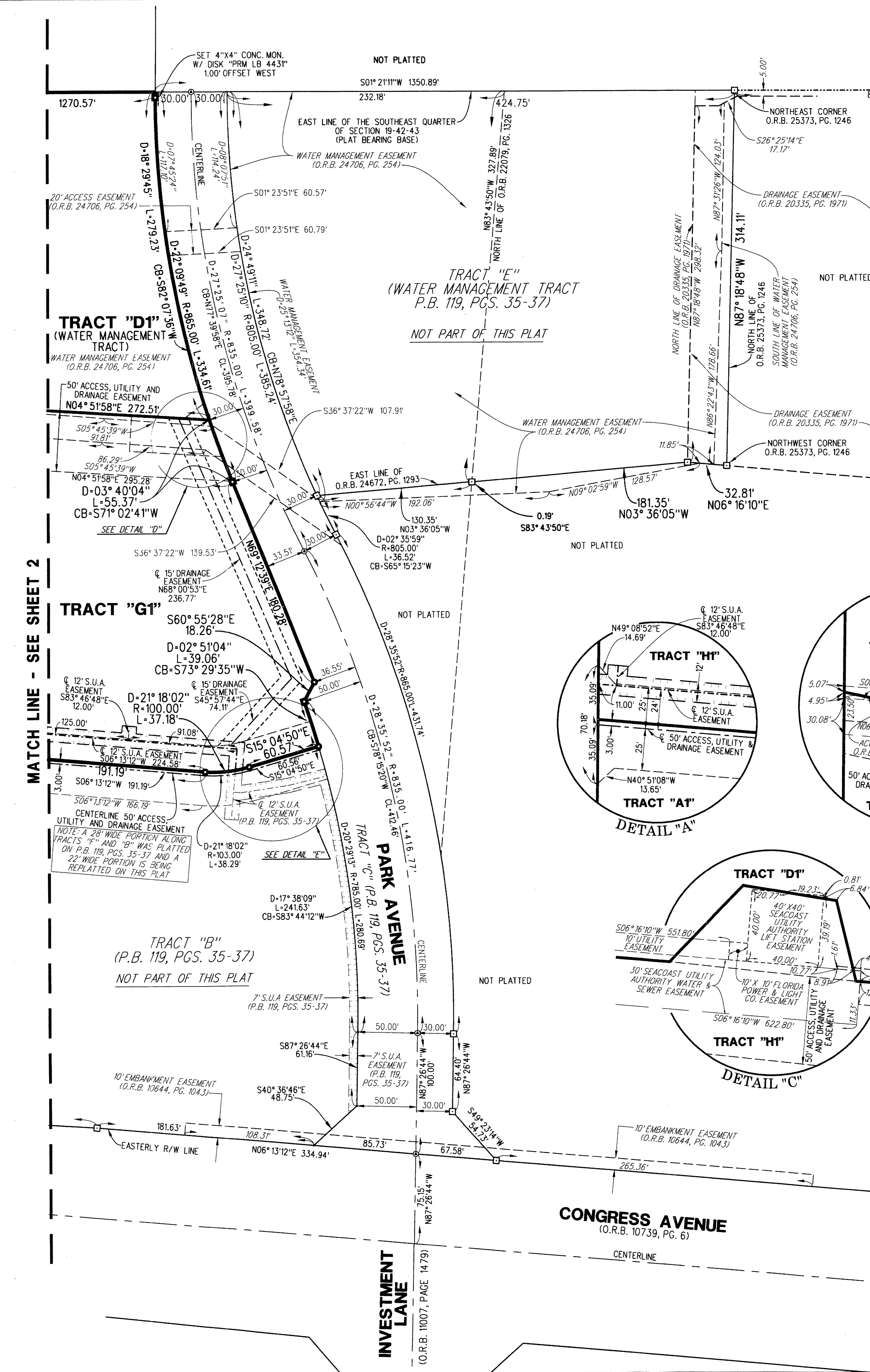


129

CONGRESS BUSINESS PARK - PLAT NO. 2, A P.U.D.

BEING A REPLAT OF TRACTS "A", "D", "G" AND "H", AS SHOWN ON CONGRESS BUSINESS PARK, A P.U.D., RECORDED IN PLAT BOOK 119, PAGES 35 THROUGH 37, PUBLIC RECORDS OF PALM BEACH COUNTY, FLORIDA LYING IN SECTION 19, TOWNSHIP 42 SOUTH, RANGE 43 EAST, TOWN OF LAKE PARK, PALM BEACH COUNTY, FLORIDA
JULY 2015 SHEET 3 OF 3



- ABBREVIATIONS:**
- CB = CHORD BEARING
 - CL = CENTERLINE
 - CL = CHORD LENGTH
 - CONC. = CONCRETE
 - COR. = CORNER
 - D = DELTA
 - D.E. = DRAINAGE EASEMENT
 - L = ARC LENGTH
 - O.R.B. = OFFICIAL RECORD BOOK
 - MON. = MONUMENT
 - P.C.P. = PERMANENT CONTROL POINT
 - P.B. = PLAT BOOK
 - PG. = PAGE
 - PGS. = PAGES
 - P.O.B. = POINT OF BEGINNING
 - P.O.C. = POINT OF COMMENCEMENT
 - P.R.M. = PERMANENT REFERENCE MONUMENT
 - P.S.M. = PROFESSIONAL SURVEYOR AND MAPPER
 - R = RADIUS
 - S.U.A. = SEACOAST UTILITY AUTHORITY

- LEGEND:**
- DENOTES PERMANENT REFERENCE MONUMENT (P.R.M.) SET 4"x4" CONCRETE MONUMENT WITH DISK STAMPED "PRM LB4431" UNLESS OTHERWISE NOTED
 - DENOTES PERMANENT REFERENCE MONUMENT (P.R.M.) FOUND 4"x4" CONCRETE MONUMENT WITH DISK STAMPED "PRM LB4431" UNLESS OTHERWISE NOTED
 - DENOTES PERMANENT REFERENCE MONUMENT (P.R.M.) SET MAG NAIL & DISK STAMPED "PRM LB4431" UNLESS OTHERWISE NOTED

LIDBERG LAND SURVEYING, INC.
 675 West IndianTown Road, Suite 200, Jupiter, Florida 33458 TEL. 561-746-8454
 LB4431

CAD.	K:\JUST \ 194243 \ 99-240H-306 \ 99-240H-306.DGN		
REF.			
FLD.	FB.	PG.	JOB 99-240H-306
OFF. CASASUS			DATE JULY 2015
CKD. D.C.L.	SHEET 3	OF 3	DWG. 099-240PP