

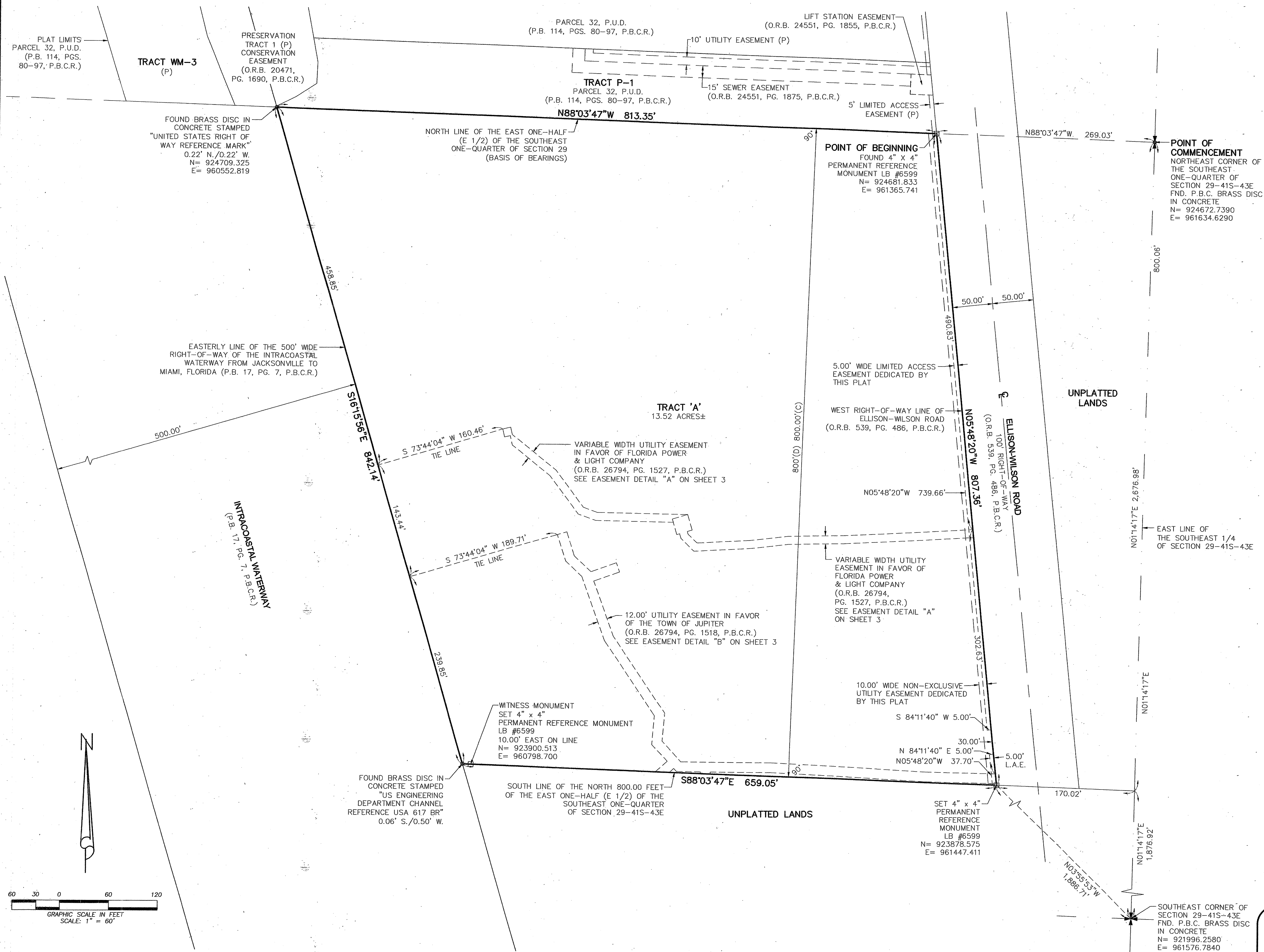
BERT WINTERS PARK

BEING A PLAT OF A PORTION OF SECTION 29, TOWNSHIP 41 SOUTH, RANGE 43 EAST
PALM BEACH COUNTY, FLORIDA
SHEET 2 OF 3

B. 105

STATE OF FLORIDA)
COUNTY OF PALM BEACH) S.S.

THIS INSTRUMENT WAS FILED FOR RECORD AT _____ M. THIS _____ DAY OF _____ 20____ AND DULY RECORDED IN: PLAT BOOK _____ ON PAGE _____ SHARON R. BOCK CLERK & COMPTROLLER PALM BEACH COUNTY BY: _____ DEPUTY CLERK



COORDINATE TRANSLATION DATA

- COORDINATES SHOWN ARE GRID
- DATUM = NAD 83 1990 ADJUSTMENT
- ZONE = FLORIDA EAST
- LINEAR UNIT = US SURVEY FEET
- COORDINATE SYSTEM 1983 STATE PLANE TRANSVERSE MERCATOR PROJECTION
- GROUND DISTANCE X SCALE FACTOR = GRID DISTANCE
- ALL DISTANCES ARE GROUND UNLESS OTHERWISE NOTED
- SCALE FACTOR = 1.000048157

$$\frac{N\ 88^{\circ}03'47''\ W\ (DEED)}{N\ 88^{\circ}03'47''\ W\ (GRID)} = \frac{00^{\circ}00'00''}{\text{BEARING ROTATION COUNTERCLOCKWISE (DEED TO GRID)}}$$

NORTH LINE OF THIS PLAT

LEGEND

- L.A.E. = LIMITED ACCESS EASEMENT
- LB = LICENSED BUSINESS
- O.R.B. = OFFICIAL RECORD BOOK
- P = PARCEL 32, P.U.D. (PLAT BOOK 114, PAGES 80 THROUGH 97, P.B.C.R.)
- P.B. = PLAT BOOK
- P.B.C. = PALM BEACH COUNTY
- P.B.C.R. = PALM BEACH COUNTY RECORDS
- P.B.C.U.E. = PALM BEACH COUNTY UTILITY EASEMENT
- P.C.N. = PARCEL CONTROL NUMBER
- PG. = PAGE(S)
- P.R.M. = PERMANENT REFERENCE MONUMENT
- U.E. = UTILITY EASEMENT
- ☐ = PERMANENT REFERENCE MONUMENT (P.R.M.) 4" X 4" CONCRETE MONUMENT WITH P.K. NAIL IN BRASS DISC STAMPED "PRM LB 6599"

THIS INSTRUMENT WAS PREPARED BY:
DAVID A. BOWER, P.S.M. #5888 IN THE OFFICES OF DENNIS J. LEAVY AND ASSOCIATES, INC. CERTIFICATE OF AUTHORIZATION NUMBER: LB6599
460 BUSINESS PARK WAY, SUITE B
ROYAL PALM BEACH, FLORIDA 33411
PHONE: (561) 753 - 0650
FAX: (561) 753 - 0290

DENNIS J. LEAVY & ASSOCIATES, INC.
LAND SURVEYORS AND MAPPERS

460 BUSINESS PARK WAY * SUITE B * ROYAL PALM BEACH, FL * 33411
PHONE: (561) 753-0650 FAX: (561) 753-0290

SCALE: AS SHOWN CHECKED BY: GHC DATE: 07/10/13
DRAWN BY: DAB JOB NO.: 12-085-01

