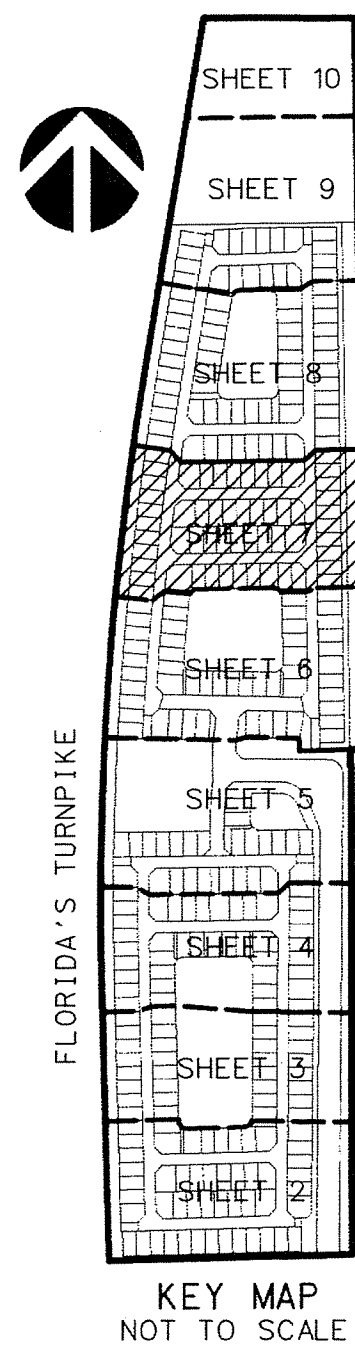


PERIMETER

SURVEYING & MAPPING
Certificate of Authorization No. LB7264
Prepared by: Jeff S. Hodapp, P.S.M.
947 Clint Moore Road
Boca Raton, Florida 33487
Tel: (561) 241-9988
Fax: (561) 241-5182



ATLANTIC COMMONS - PLAT FIVE

A REPLAT OF PORTIONS OF TRACTS 1-3 AND 30-35 IN SECTION 17, TOWNSHIP 46 SOUTH, RANGE 42 EAST,
AND PORTIONS OF TRACTS 65, 66, 94-99 AND 126-128 IN SECTION 8, TOWNSHIP 46 SOUTH, RANGE 42 EAST,
OF "PALM BEACH FARMS CO. PLAT NO.1" (P.B. 2, PGS 26-28, P.B.C.R.)
PALM BEACH COUNTY, FLORIDA.

LEGEND:

- SET P.R.M. (UNLESS OTHERWISE NOTED) 4" X 4" CONC. MON. WITH ALUMINUM DISK STAMPED P.R.M. • LB7264
- PERMANENT CONTROL POINT (NAIL & DISK • LB7264)
- ⊕ CENTERLINE

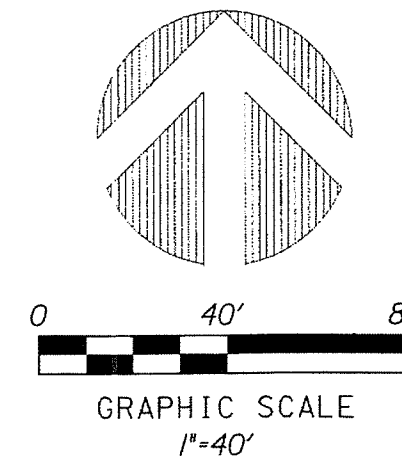
ABBREVIATIONS:

- ALUM ALUMINUM
- B.E. BUFFER EASEMENT
- CH CHORD
- CHB CHORD BEARING
- CONC. CONCRETE
- COR. CORNER
- D DELTA (CENTRAL ANGLE)
- D.E. DRAINAGE EASEMENT
- D.T. DRIVEWAY TRACT
- FND. FOUND
- L.A.E. LIMITED ACCESS EASEMENT
- L.B.E. LANDSCAPE BUFFER EASEMENT
- L.B. LICENSED BUSINESS
- L.E. LANDSCAPE EASEMENT
- L.M.E. LAKE MAINTENANCE EASEMENT
- L.M.A.E. LAKE MAINTENANCE ACCESS EASEMENT
- L.S. LICENSED SURVEYOR
- L.S.E. LIFT STATION EASEMENT
- L.W.D.D. LAKE WORTH DRAINAGE DISTRICT

MON.

- O.E. OFFICIAL RECORDS BOOK
- N.R. NON-RADIAL
- P.B. PLAT BOOK
- P.B.C. PALM BEACH COUNTY
- P.B.C.R. PALM BEACH COUNTY RECORDS
- P.B.C.U.E. PALM BEACH COUNTY UTILITY EASEMENT
- P.C. PAGE
- P.C.P. PERMANENT CONTROL POINT
- P.O.B. POINT OF BEGINNING
- P.O.C. POINT OF COMMENCEMENT
- P.R.M. PERMANENT REFERENCE MONUMENT
- P.S.M. PROFESSIONAL SURVEYOR & MAPPER
- P.U.D. PLANNED UNIT DEVELOPMENT
- R. RADIAL
- R.P.B. ROAD PLAT BOOK
- R.W. RIGHT-OF-WAY
- SEC. SECTION
- S.F. SQUARE FEET
- U.E. UTILITY EASEMENT

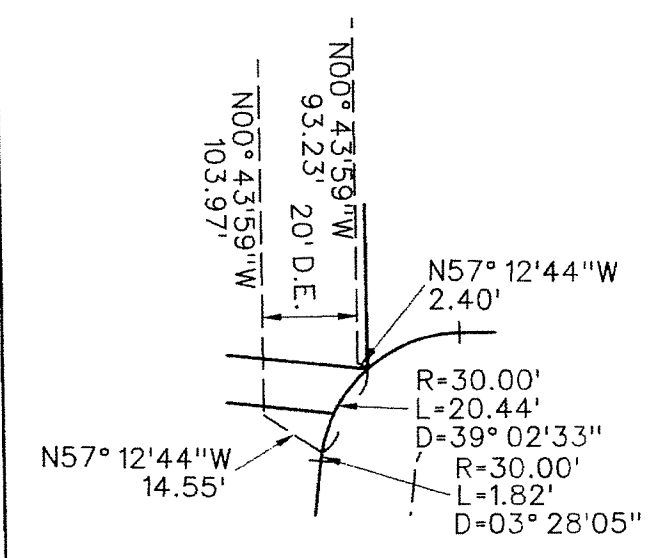
- MONUMENT
- MAINTENANCE AND ROOF OVERHANG EASEMENT
- OFFICIAL RECORDS BOOK
- NON-RADIAL
- PLAT BOOK
- PALM BEACH COUNTY
- PALM BEACH COUNTY RECORDS
- PALM BEACH COUNTY UTILITY EASEMENT
- PAGE
- PERMANENT CONTROL POINT
- POINT OF BEGINNING
- POINT OF COMMENCEMENT
- PERMANENT REFERENCE MONUMENT
- PROFESSIONAL SURVEYOR & MAPPER
- PLANNED UNIT DEVELOPMENT
- RADIUS
- RADIAL
- ROAD PLAT BOOK
- RIGHT-OF-WAY
- SECTION
- SQUARE FEET
- UTILITY EASEMENT



19

SHEET 7 OF 10

FLORIDA'S TURNPIKE
F.D.O.T. R/W MAP
SECTION 93030-2510
LAST REV. DATE 3-15-01



"REPLAT OF A PORTION OF
PINE RIDGE AT DELRAY BEACH"
(P.B. 65, PGS. 58, P.B.C.R.)

E. LINE SECTION 8-46-42 PER P.B.F. PLAT NO. 1
500° 43'59"E 2585.44'
1292.72' PRM TO PRM

E. LINE TRACTS 65, 94, 97, 128 PER P.B.F. PLAT NO. 1
500° 43'59"E 1863.10'

E. LINE TRACTS 65, 94, 97, 128 PER P.B.F. PLAT NO. 1
500° 43'59"E 1424.99'

PLAT LIMITS

SEE DETAIL
R-30.00'
L-4.3.72'
D-83° 29'38"

SEE SHEET 6
R-30.00'
L-4.7.12'
D-90° 00'00"