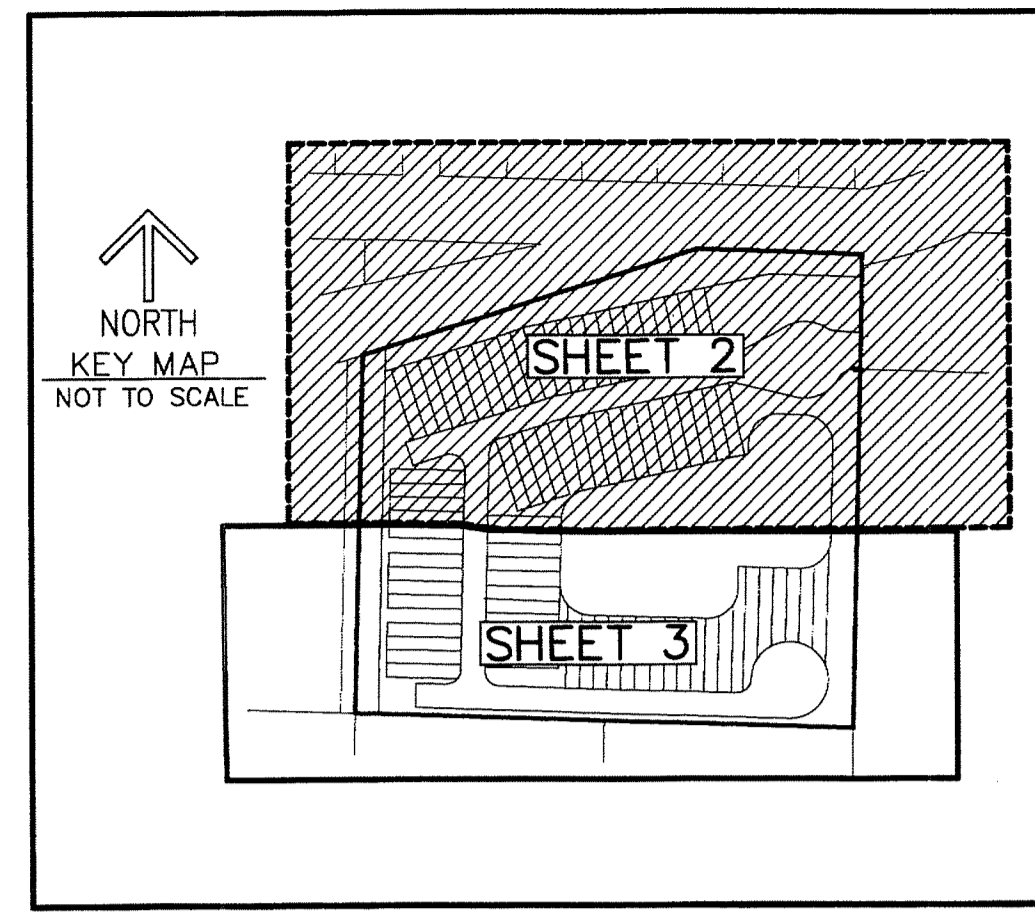
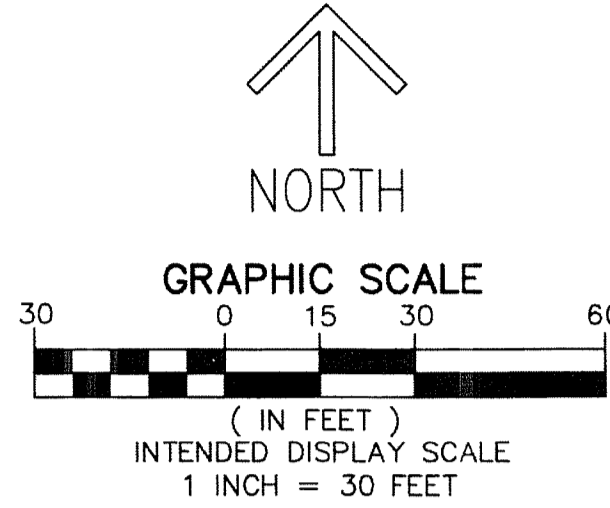


THIS INSTRUMENT PREPARED BY
 DAVID P. LINDLEY
 OF
CAULFIELD and WHEELER, INC.
 SURVEYORS - ENGINEERS - PLANNERS
 7900 GLADES ROAD, SUITE 100
 BOCA RATON, FLORIDA 33434
 OFFICE (561)392-1991 FAX (561)750-1452
 CERTIFICATE OF AUTHORIZATION NO. LB 3591
 FEBRUARY - 2015

WATERVILLE

BEING A REPLAT OF A PORTION OF TRACTS 2 AND 3,
 MODEL LAND COMPANY'S SUBDIVISION OF SECTION 20,
 TOWNSHIP 44 SOUTH, RANGE 43 EAST,
 AS RECORDED ON PLAT BOOK 5, PAGE 79 OF THE PUBLIC RECORDS OF PALM BEACH COUNTY,
 LYING IN THE CITY OF LAKE WORTH, PALM BEACH COUNTY, FLORIDA.

- LEGEND/ABBREVIATIONS**
- SET PRM - INDICATES PERMANENT REFERENCE MONUMENT
 - 4"x4"x24" CONCRETE MONUMENT WITH ALUMINUM DISK
 - STAMPED "C&W PRM LB#3591" UNLESS OTHERWISE NOTED
 - - INDICATES PERMANENT CONTROL POINT
 - ⊕ - CENTERLINE
 - Δ - CENTRAL ANGLE
 - R - RADIUS
 - L - ARC LENGTH
 - CB - CHORD BEARING
 - CD - CHORD DISTANCE
 - DE - DRAINAGE EASEMENT
 - UE - UTILITY EASEMENT
 - LB - LICENSED BUSINESS
 - LBE - LANDSCAPE BUFFER EASEMENT
 - LME - LAKE MAINTENANCE EASEMENT
 - L.W.D. - LAKE WORTH DRAINAGE DISTRICT
 - NO. - NUMBER
 - O.R.B. - OFFICIAL RECORD BOOK
 - SF - SQUARE FEET
 - WMUE - WATER MAIN UTILITY EASEMENT



7

STATE OF FLORIDA
 COUNTY OF PALM BEACH
 THIS PLAT WAS FILED FOR
 RECORD AT _____ M.
 THIS _____ DAY OF _____
 A.D. 2015 AND DULY RECORDED
 IN PLAT BOOK _____ ON
 PAGES _____ THRU _____

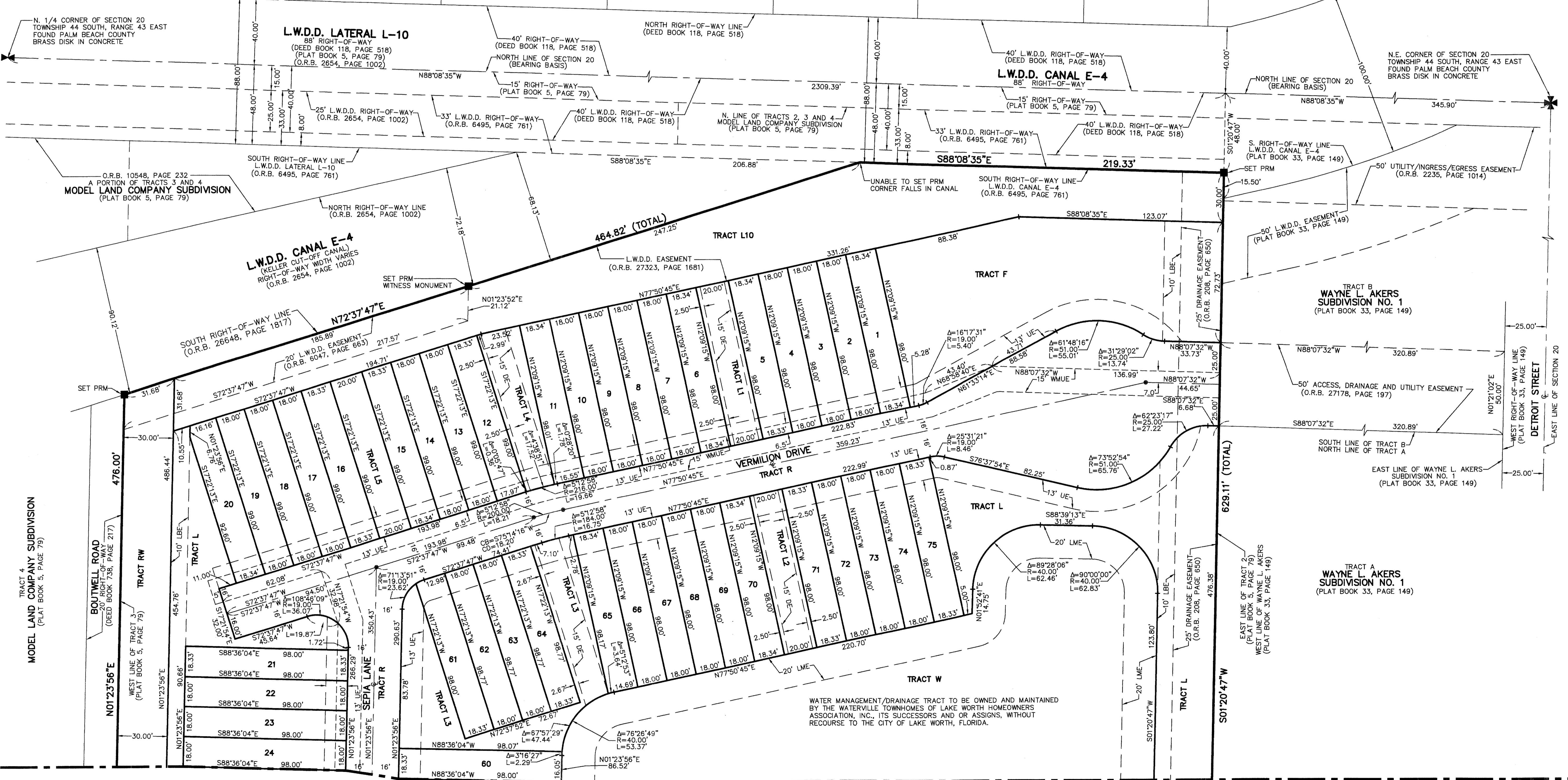
SHARON R. BOCK
 CLERK AND COMPTROLLER

BY: _____
 DEPUTY CLERK

SHEET 2 OF 3

LAKE CLARKE WATERWAY ESTATES PLAT 2
 (PLAT BOOK 26, PAGE 114)

LAKE CLARKE WATERWAY ESTATES PLAT 1
 (PLAT BOOK 25, PAGE 202)



MATCH LINE SHEET 3 OF 3