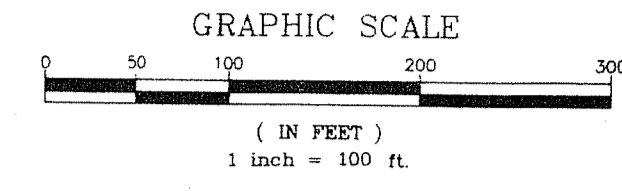
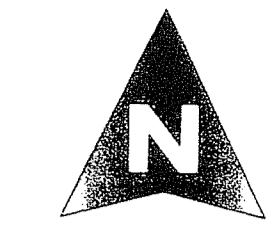


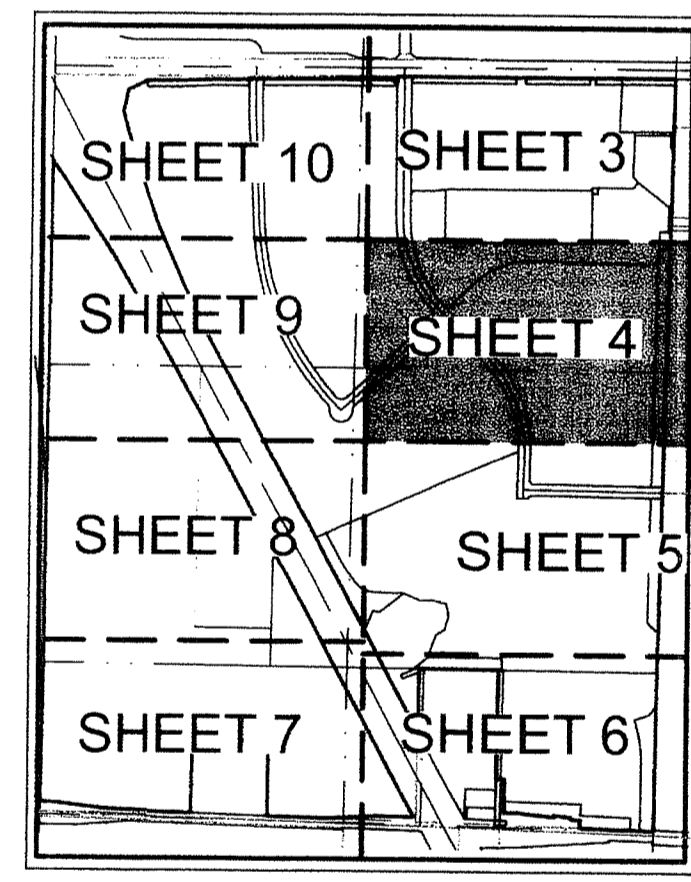
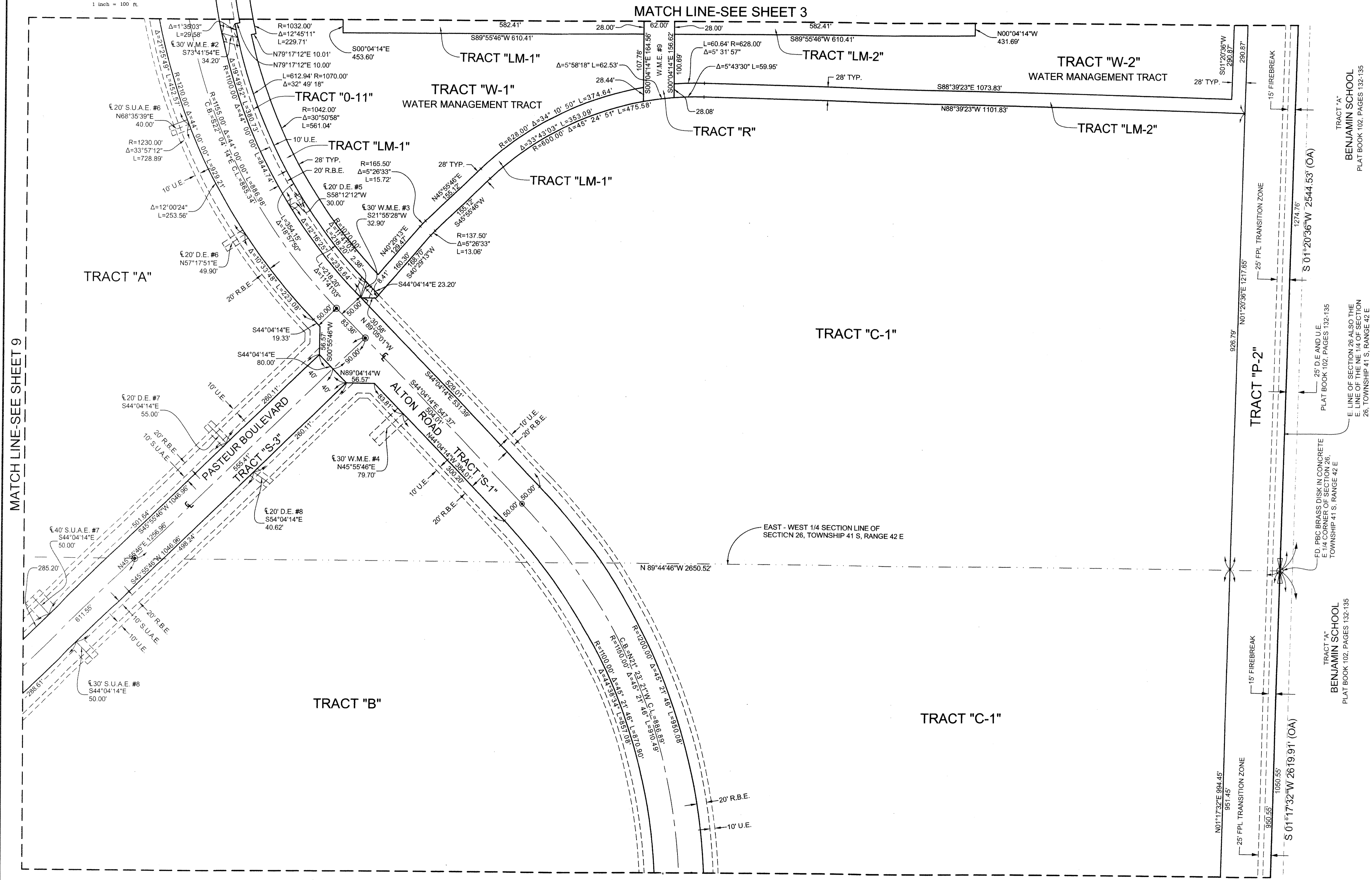
200

ALTON PCD

LYING IN SECTIONS 26 AND 35, TOWNSHIP 41 SOUTH, RANGE 42 EAST,
CITY OF PALM BEACH GARDENS, PALM BEACH COUNTY, FLORIDA.
OCTOBER, 2014 SHEET 4 OF 9



COUNTY OF PALM BEACH)
STATE OF FLORIDA) SS
THIS PLAT WAS FILED FOR RECORD AT)
M. THIS) DAY OF)
RECORDED IN PLAT BOOK NO.)
ON PAGE) THRU)
SHARON R. BOCK,
CLERK AND COMPTROLLER
BY: _____, D.C.



KEY MAP
NOT TO SCALE

SHEET 4 OF 10



MICHAEL B. SCHORAH & ASSOCIATES, INC.
1850 FOREST HILL BLVD., SUITE 206
WEST PALM BEACH, FLORIDA 33406
EB# 2438 TEL. (561) 968-0080 FAX. (561) 642-9726 LB# 2438

ALTON PCD

Z:\BRIGER 1608 \POLTER-UNIT2\1608_ALTON PCD PLAT.DWG. 11/13/2014 11:09:58 AM Lewis