

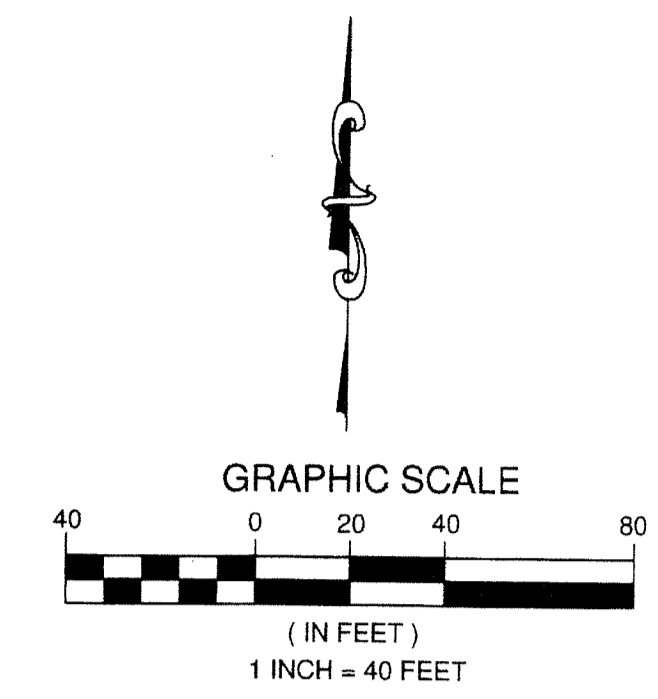
0625-002

184

STATE OF FLORIDA
COUNTY OF PALM BEACH
THIS PLAT WAS FILED FOR
RECORD AT _____ M.
THIS _____ DAY OF
A.D. 201____ AND DULY RECORDED
IN PLAT BOOK _____ ON
PAGES _____ AND _____
SHARON R. BOCK
CLERK AND COMPTROLLER

BY:
DEPUTY CLERK

SHEET 2 OF 2



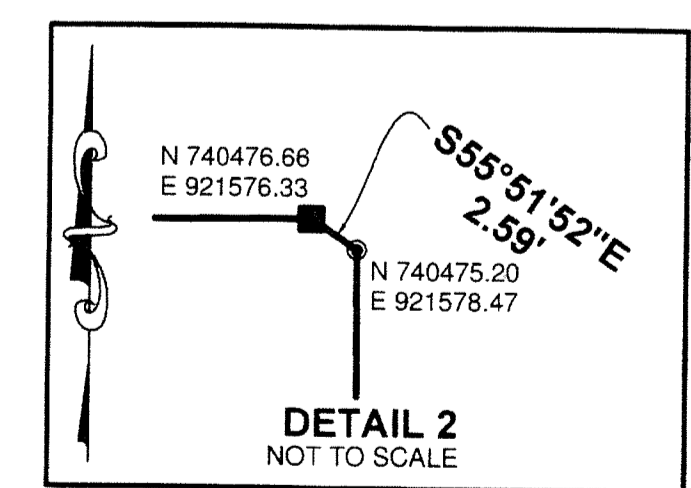
ROOMS TO GO REPLAT NO. 1

BEING A REPLAT OF PARCEL A, ROOMS TO GO, PLAT BOOK 73, PAGES 76 AND 77 AND A PORTION OF WEST 150.00 FEET OF TRACT 93, BLOCK 77, PALM BEACH FARMS COMPANY PLAT NO. 3, AS RECORDED IN PLAT BOOK 2, PAGES 45 THROUGH 54, ALL OF THE PUBLIC RECORDS OF PALM BEACH COUNTY, FLORIDA, LYING IN SECTION 18, TOWNSHIP 47 SOUTH, RANGE 42 EAST, PALM BEACH COUNTY, FLORIDA

NOTES
COORDINATES, BEARINGS AND DISTANCES
COORDINATES SHOWN ARE GRID
DATUM = NAD 83 (80/98 ADJUSTMENT)
ZONE = FLORIDA EAST
LINEAR UNIT = US SURVEY FEET
COORDINATE SYSTEM 1983 STATE PLANE
TRANSVERSE MERCATOR PROJECTION
ALL DISTANCES ARE GROUND
SCALE FACTOR = 1.00017639
GROUND DISTANCE X SCALE FACTOR = GRID DISTANCE
BEARINGS AS SHOWN HEREON ARE GRID DATUM,
NAD 83 1990 ADJUSTMENT, FLORIDA EAST ZONE.

LEGEND/ABBREVIATIONS

- BDE - BUFFER DRAINAGE EASEMENT
- CB - CHORD BEARING
- CD - CHORD DISTANCE
- DE - DRAINAGE EASEMENT
- DB - DEED BOOK
- E - EASTING
- FPL - FLORIDA POWER AND LIGHT COMPANY
- L - ARC LENGTH
- LAE - LIMITED ACCESS EASEMENT
- LB - LICENSED BUSINESS
- LBE - LANDSCAPE BUFFER EASEMENT
- LMAE - LAKE MAINTENANCE ACCESS EASEMENT
- LME - LAKE MAINTENANCE EASEMENT
- N - NORTHING
- ORB - OFFICIAL RECORD BOOK
- PBCUE - PALM BEACH COUNTY UTILITY EASEMENT
- UE - UTILITY EASEMENT
- R/W - RIGHT-OF-WAY
- PRM - DENOTES PERMANENT REFERENCE MONUMENT
4" x 4" x 24" CONCRETE MONUMENT WITH
ALUMINUM DISK STAMPED "PRM LB3591"
- PRM - DENOTES PERMANENT REFERENCE MONUMENT
NAIL AND METAL DISK STAMPED "PRM LB3591"



THIS INSTRUMENT PREPARED BY
DAVID P. LINDLEY
OF
CAULFIELD and WHEELER, INC.
SURVEYORS - ENGINEERS - PLANNERS
7900 GLADES ROAD, SUITE 100
BOCA RATON, FLORIDA 33434 - (561)392-1991
JANUARY - 2014

