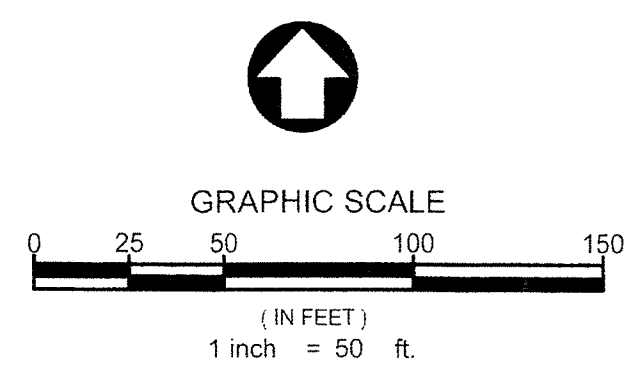
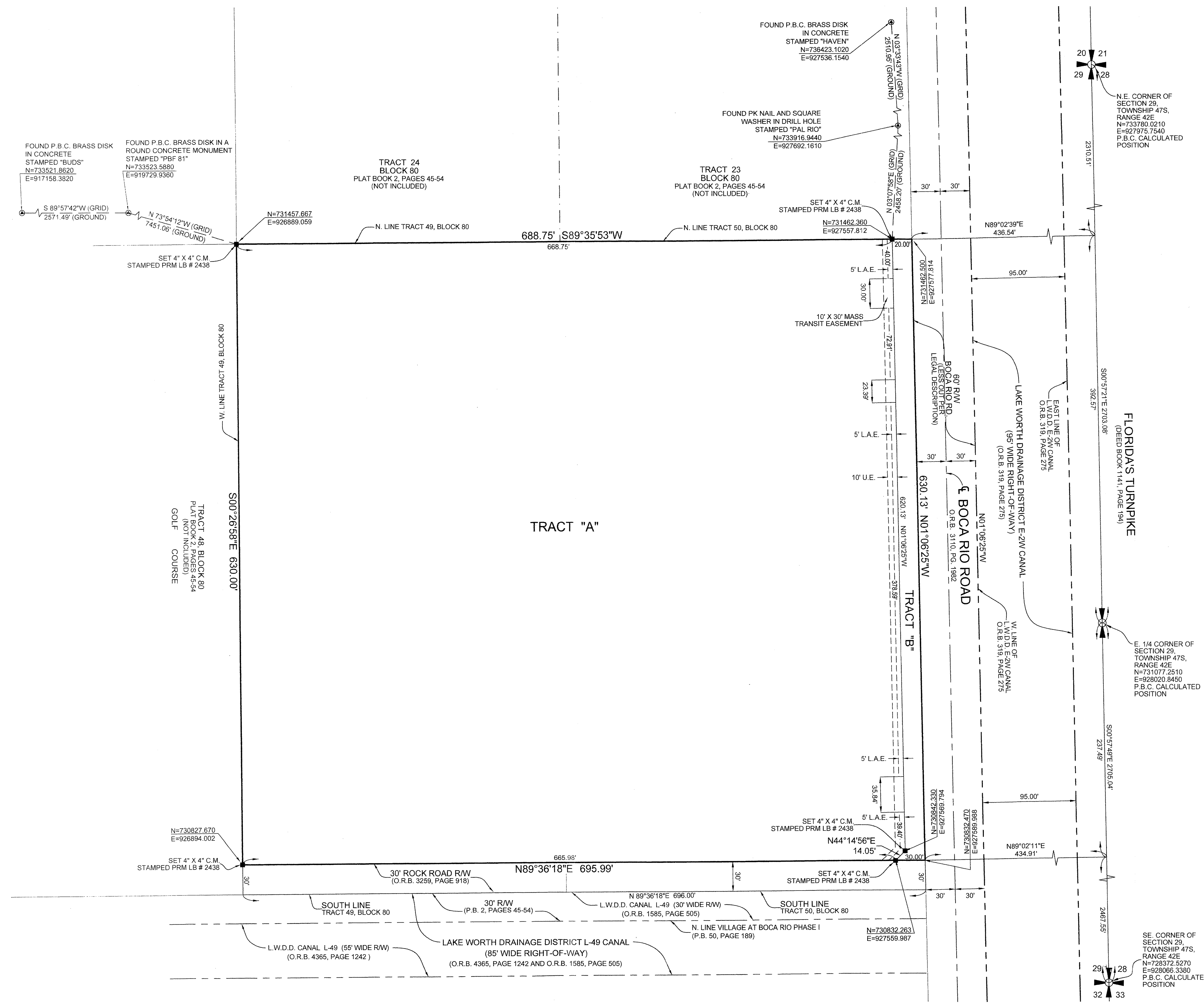


ELIZABETH FAULK FOUNDATION MUPD

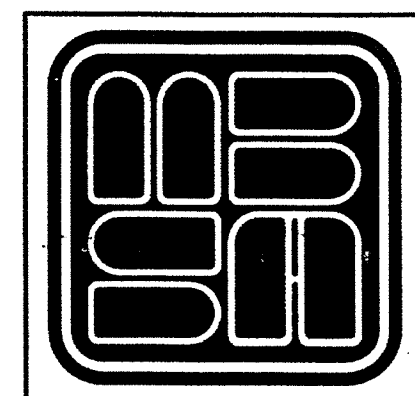
LYING IN SECTION 29, TOWNSHIP 47 SOUTH, RANGE 42 EAST, PALM BEACH COUNTY, FLORIDA, BEING A RE-PLAT OF A PORTION OF TRACT 49 AND A PORTION OF TRACT 50, BLOCK 80, PALM BEACH FARMS COMPANY PLAT NO. 3 AS RECORDED IN PLAT BOOK 2, PAGE 45 OF THE PUBLIC RECORDS OF PALM BEACH COUNTY, FLORIDA,
SHEET 2 OF 2

COUNTY OF PALM BEACH)
STATE OF FLORIDA) SS
THIS PLAT WAS FILED FOR RECORD AT _____ M. THIS _____ DAY OF _____, 2014, AND DULY RECORDED IN PLAT BOOK NO. _____ ON PAGE _____ THRU _____
SHARON R. BOCK, CLERK AND COMPTROLLER
BY: _____, D.C.

180



COORDINATE NOTE:
STATE PLANE COORDINATES SHOWN ARE GRID DATUM,
NAD 83 1990 ADJUSTMENT, FLORIDA EAST ZONE, COORDINATE
SYSTEM 1983 STATE PLANE, TRANSVERSE MERCATOR PROJECTION
LINEAR UNIT = US SURVEY FEET
ALL DISTANCES ARE GROUND
SCALE FACTOR = 1.0000254
GROUND DISTANCE X SCALE FACTOR = GRID DISTANCE
BEARINGS AS SHOWN HEREON ARE GRID DATUM, NAD 83 1990
ADJUSTMENT, FLORIDA EAST ZONE.



MICHAEL B. SCHORAH & ASSOCIATES, INC.
1850 FOREST HILL BLVD., SUITE 206
WEST PALM BEACH, FLORIDA 33406
EB# 2438 TEL. (561) 968-0080 FAX. (561) 642-9726 LB# 2438

ELIZABETH FAULK FOUNDATION MUPD