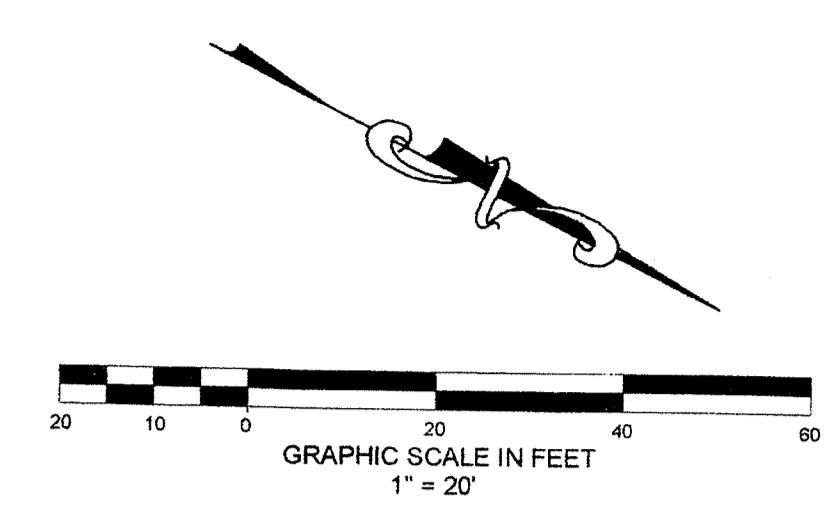


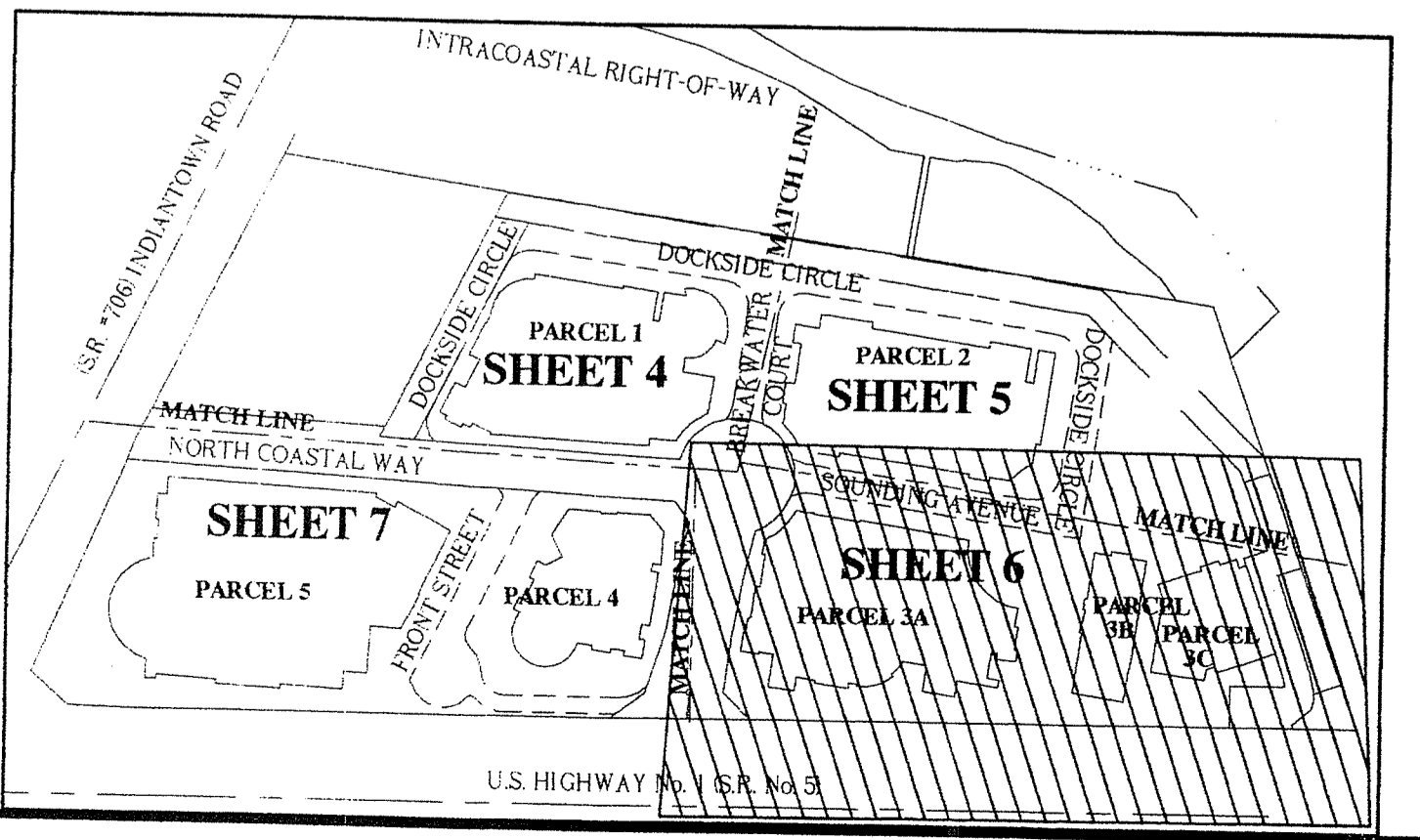
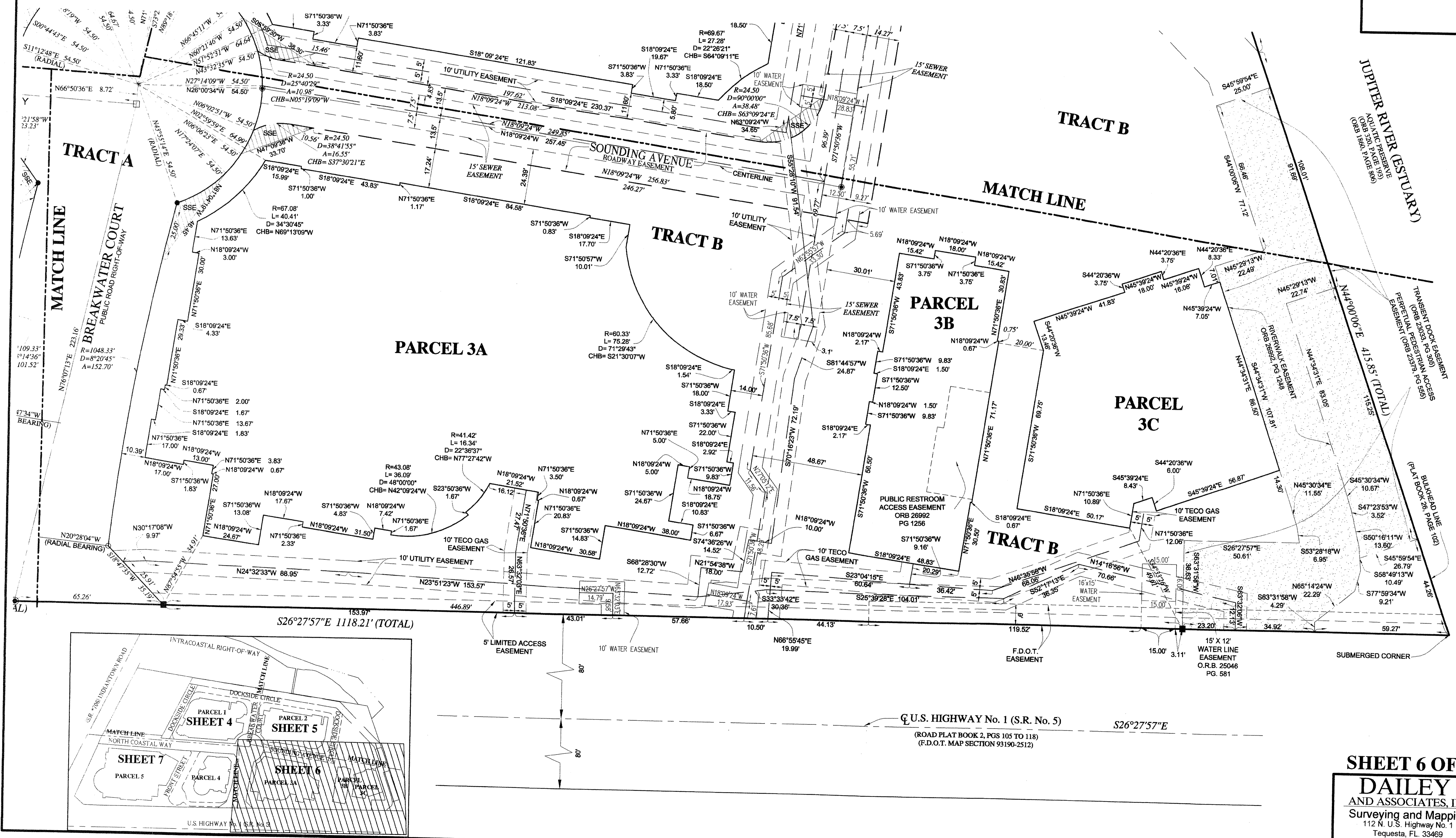
# HARBOURSIDE, P.U.D.

LYING IN SECTION 6, TOWNSHIP 41 SOUTH, RANGE 43 EAST,  
TOWN OF JUPITER, PALM BEACH COUNTY, FLORIDA  
SEPTEMBER, 2014



**LEGEND**

□ SET 4"x4" CONCRETE MONUMENT (P.C.P.) LB# 2799	○ TWP RNG RANGE
■ SET 4"x4" CONCRETE MONUMENT (P.R.M.) LS# 2439	○ O.R.B. OFFICIAL RECORD BOOK
● SET MAG NAIL & DISC (P.C.P.) LB# 2799	○ P PAGE
● SET MAG NAIL & DISC LB# 2799 (TRACT CORNERS)	○ S.R. STATE ROAD
○ SET 5/8" IRON ROD & CAP LB# 2799 (TRACT CORNERS)	▨ TRANSIENT DOCK EASEMENT & PERPETUAL PEDESTRIAN ACCESS EASEMENT
○ R RADIUS	▨ SAFE SIGHT EASEMENT (SSE)
○ D DELTA ANGLE	F.D.O.T. FLORIDA DEPARTMENT OF TRANSPORTATION
○ A ARC LENGTH	P.R.M. PERMANENT REFERENCE MONUMENT
○ CHB CHORD BEARING	P.C.P. PERMANENT CONTROL POINT
○ CHD CHORD DISTANCE	
○ ID IDENTIFICATION NUMBER	



U.S. HIGHWAY No. 1 (S.R. No. 5)  
(ROAD PLAT BOOK 2, PGS 105 TO 118)  
(F.D.O.T. MAP SECTION 93190-2512)

**SHEET 6 OF 7**

**DAILEY AND ASSOCIATES, INC.**  
Surveying and Mapping  
112 N. U.S. Highway No. 1  
Tequesta, FL 33469  
Phone: (561) 746-8424  
BUSINESS LICENSE: LB# 2799