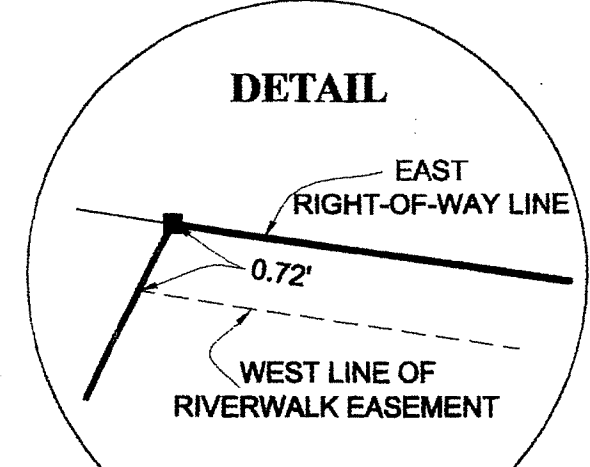
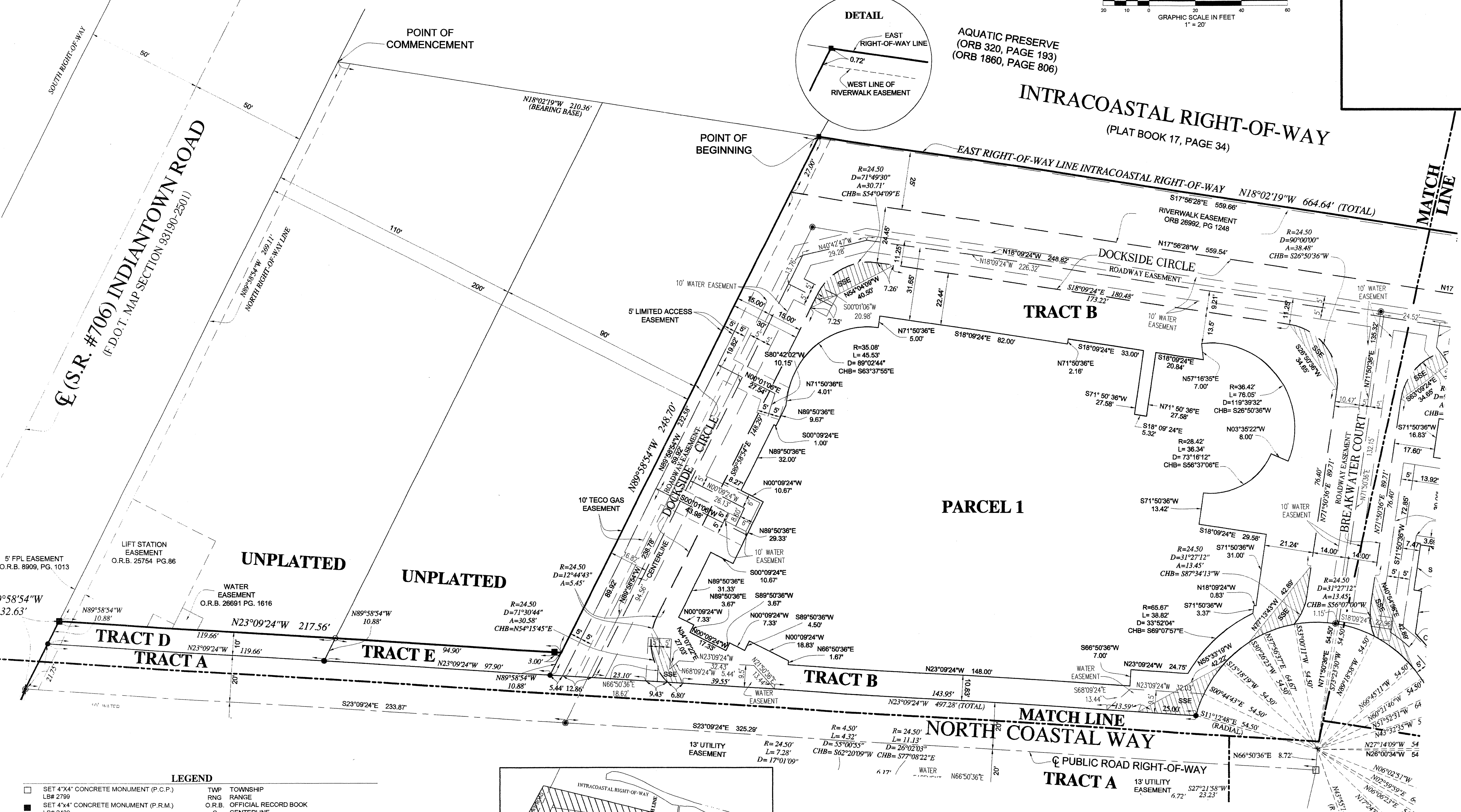
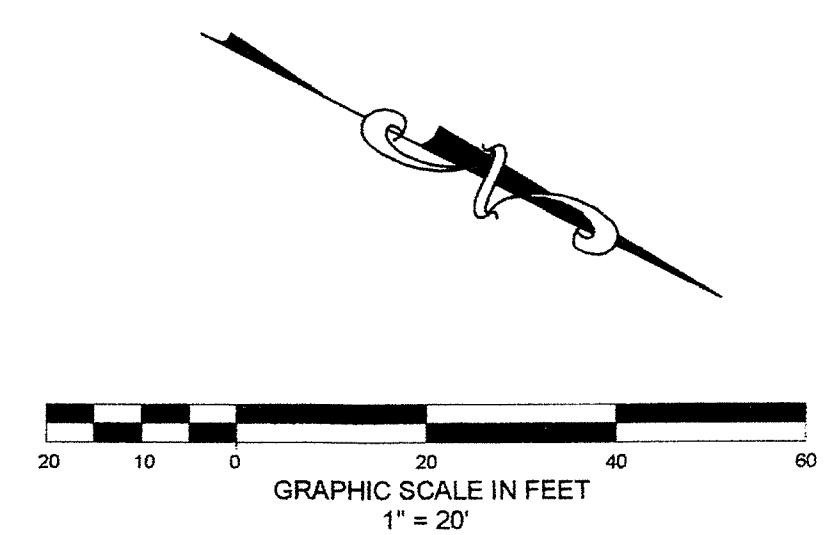


# HARBOURSIDE, P.U.D.

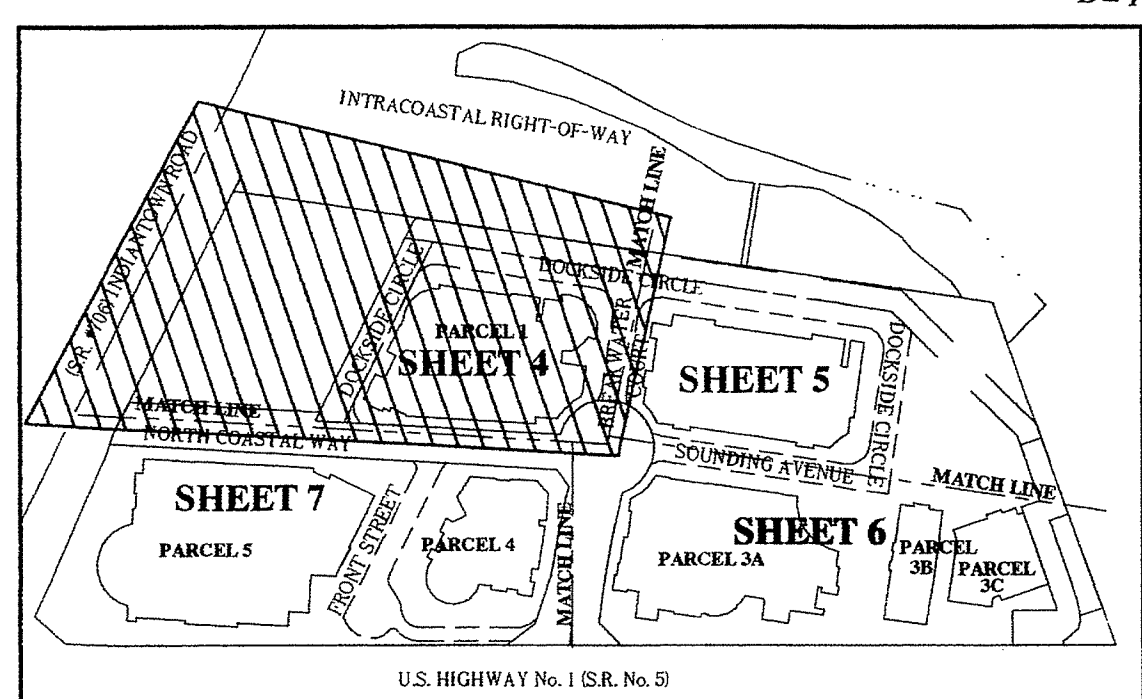
LYING IN SECTION 6, TOWNSHIP 41 SOUTH, RANGE 43 EAST,  
TOWN OF JUPITER, PALM BEACH COUNTY, FLORIDA  
SEPTEMBER, 2014



AQUATIC PRESERVE  
(ORB 320, PAGE 193)  
(ORB 1860, PAGE 806)

**LEGEND**

□ SET 4"x4" CONCRETE MONUMENT (P.C.P.) LB# 2799	TWP TOWNSHIP
■ SET 4"x4" CONCRETE MONUMENT (P.R.M.) LS# 2438	RNG RANGE
● SET MAG NAIL & DISC (P.C.P.) LB# 2799	O.R.B. OFFICIAL RECORD BOOK
● SET MAG NAIL & DISC LB# 2799 (TRACT CORNERS)	CL CENTERLINE
● SET 5/8" IRON ROD & CAP LB# 2799 (TRACT CORNERS)	PG PAGE
R RADIUS	S.R. STATE ROAD
D DELTA ANGLE	TRANSIENT DOCK EASEMENT & PERPETUAL PEDESTRIAN ACCESS EASEMENT
A ARC LENGTH	SAFE SIGHT EASEMENT (SSE)
CHB CHORD BEARING	F.D.O.T. FLORIDA DEPARTMENT OF TRANSPORTATION
CHD CHORD DISTANCE	P.R.M. PERMANENT REFERENCE MONUMENT
ID IDENTIFICATION NUMBER	P.C.P. PERMANENT CONTROL POINT



**SHEET 4 OF 7**

**DAILEY AND ASSOCIATES, INC.**  
Surveying and Mapping  
112 N. U.S. Highway No. 1  
Tequesta, FL 33469  
Phone: (561) 746-8424  
BUSINESS LICENSE: LB# 2799