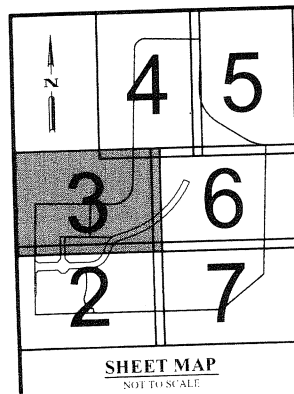


STATE OF FLORIDA
COUNTY OF PALM BEACH
THIS PLAT WAS FILED FOR
RECORD AT _____ M.
THIS _____ DAY OF _____
A.D. 20____ AND DULY RECORDED
IN PLAT BOOK _____ ON
PAGE(S) _____
SHARON R. BOCK
CLERK AND COMPTROLLER
BY: _____
DEPUTY CLERK

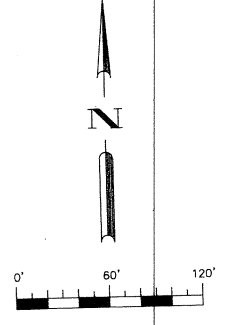
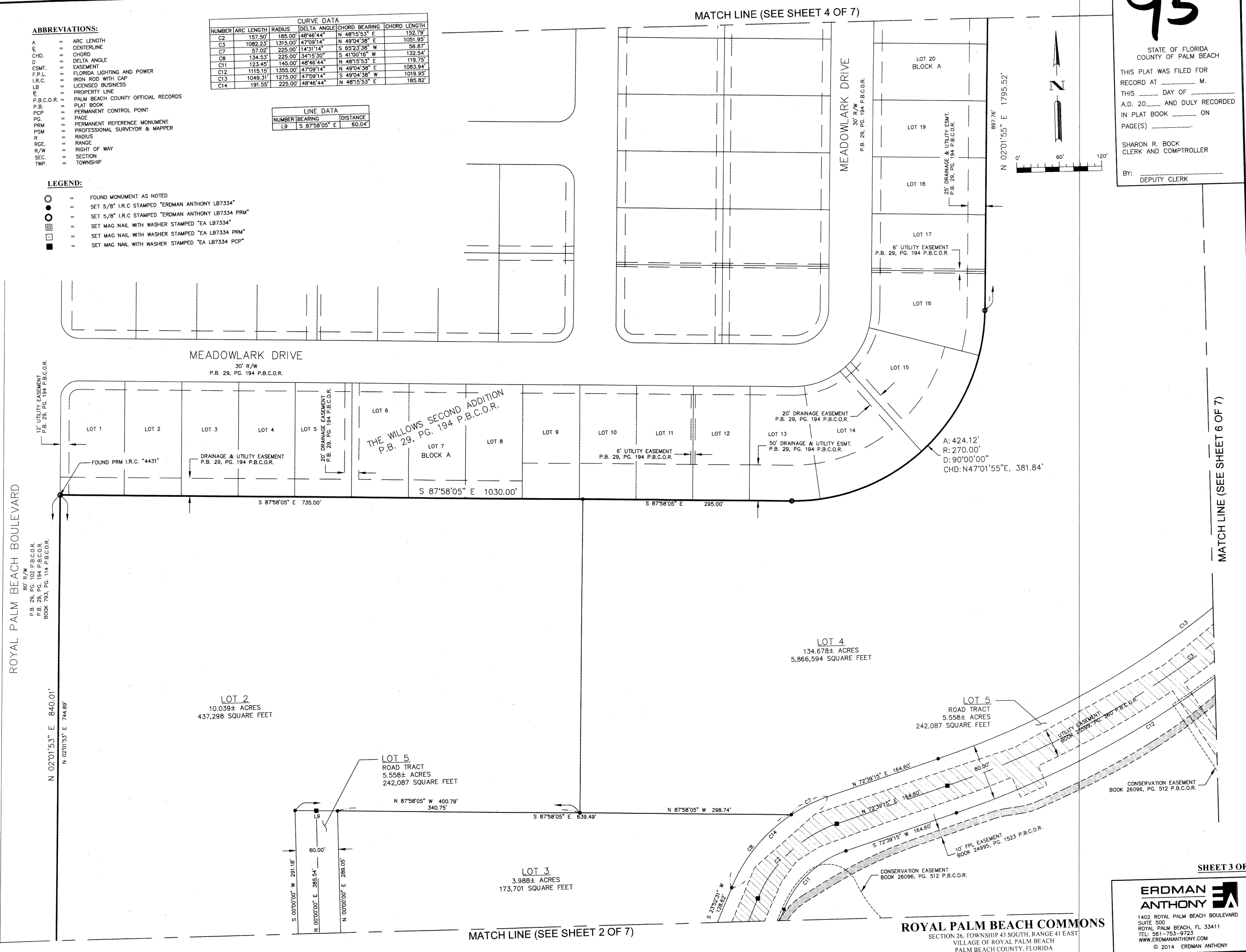


- ABBREVIATIONS:**
- A = ARC LENGTH
 - C = CENTERLINE
 - CHD. = CHORD
 - D = DELTA ANGLE
 - ESMT. = EASEMENT
 - F.P.L. = FLORIDA LIGHTING AND POWER
 - I.R.C. = IRON ROD WITH CAP
 - LB = LICENSED BUSINESS
 - P.L. = PROPERTY LINE
 - P.B.C.O.R. = PALM BEACH COUNTY OFFICIAL RECORDS
 - P.B. = PLAT BOOK
 - PCP = PERMANENT CONTROL POINT
 - PG. = PAGE
 - PRM = PERMANENT REFERENCE MONUMENT
 - PSM = PROFESSIONAL SURVEYOR & MAPPER
 - R = RADIUS
 - RGE. = RANGE
 - R/W = RIGHT OF WAY
 - SEC. = SECTION
 - TWP. = TOWNSHIP

CURVE DATA					
NUMBER	ARC LENGTH	RADIUS	DELTA ANGLE	CHORD BEARING	CHORD LENGTH
C2	157.50'	185.00'	48°46'44"	N 48°15'53" E	152.79'
C3	1082.23'	1315.00'	47°09'14"	N 49°04'38" E	1051.95'
C7	57.02'	225.00'	14°31'14"	S 65°23'38" W	56.87'
C8	134.53'	225.00'	34°15'30"	S 41°00'16" W	132.54'
C11	123.45'	145.00'	48°46'44"	N 48°15'53" E	119.75'
C12	1115.15'	1355.00'	47°09'14"	N 49°04'38" E	1063.94'
C13	1049.31'	1275.00'	47°09'14"	S 49°04'38" W	1019.95'
C14	191.55'	225.00'	48°46'44"	N 48°15'53" E	185.62'

LINE DATA		
NUMBER	BEARING	DISTANCE
L9	S 87°58'05" E	60.04'

- LEGEND:**
- = FOUND MONUMENT AS NOTED
 - = SET 5/8" I.R.C. STAMPED "ERDMAN ANTHONY LB7334"
 - = SET 5/8" I.R.C. STAMPED "ERDMAN ANTHONY LB7334 PRM"
 - = SET MAG NAIL WITH WASHER STAMPED "EA LB7334"
 - = SET MAG NAIL WITH WASHER STAMPED "EA LB7334 PRM"
 - = SET MAG NAIL WITH WASHER STAMPED "EA LB7334 PCP"



MATCH LINE (SEE SHEET 6 OF 7)

ERDMAN ANTHONY

1402 ROYAL PALM BEACH BOULEVARD
SUITE 500
ROYAL PALM BEACH, FL 33411
TEL: 561-753-9723
WWW.ERDMANANTHONY.COM
© 2014 ERDMAN ANTHONY

ROYAL PALM BEACH COMMONS
SECTION 26, TOWNSHIP 43 SOUTH, RANGE 41 EAST
VILLAGE OF ROYAL PALM BEACH
PALM BEACH COUNTY, FLORIDA