

94

STATE OF FLORIDA  
COUNTY OF PALM BEACH

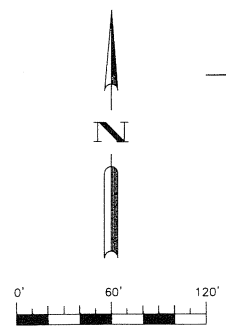
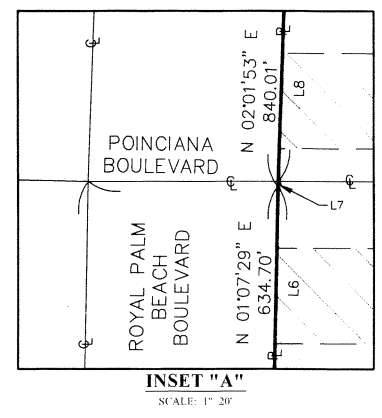
THIS PLAT WAS FILED FOR  
RECORD AT \_\_\_\_\_ M.  
THIS \_\_\_\_\_ DAY OF \_\_\_\_\_  
A.D. 20\_\_\_\_ AND DULY RECORDED  
IN PLAT BOOK \_\_\_\_\_ ON  
PAGE(S) \_\_\_\_\_

SHARON R. BOCK  
CLERK AND COMPTROLLER

BY: \_\_\_\_\_  
DEPUTY CLERK

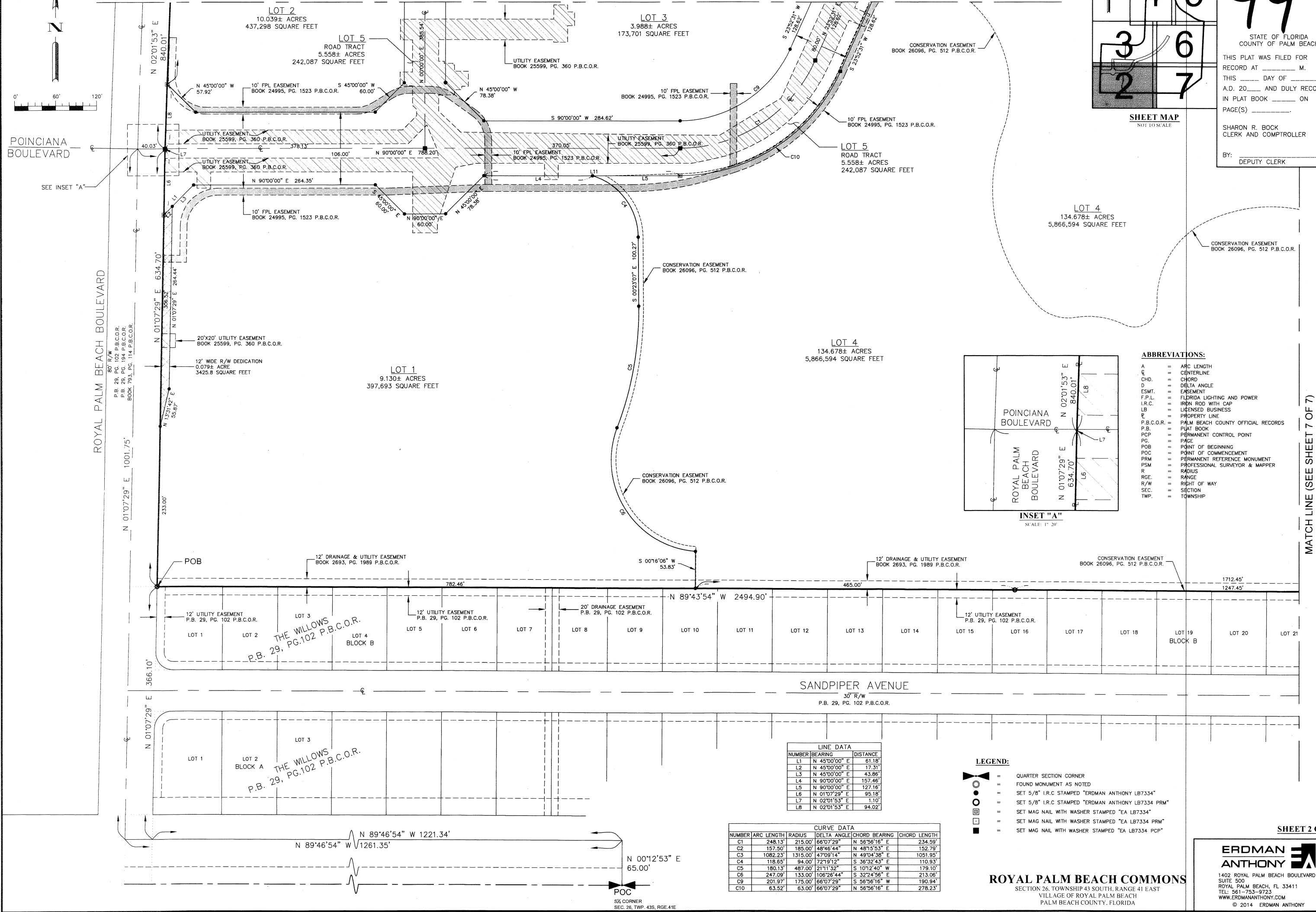
SHEET MAP  
NOT TO SCALE

- ABBREVIATIONS:**
- A = ARC LENGTH
  - C = CENTERLINE
  - CHD. = CHORD
  - D = DELTA ANGLE
  - ESMT. = EASEMENT
  - F.L.L. = FLORIDA LIGHTING AND POWER
  - I.R.C. = IRON ROD WITH CAP
  - L.B. = LICENSED BUSINESS
  - P.L. = PROPERTY LINE
  - P.B.C.O.R. = PALM BEACH COUNTY OFFICIAL RECORDS
  - P.B. = PLAT BOOK
  - PCP = PERMANENT CONTROL POINT
  - PG. = PAGE
  - POB = POINT OF BEGINNING
  - POC = POINT OF COMMENCEMENT
  - PRM = PERMANENT REFERENCE MONUMENT
  - PSM = PROFESSIONAL SURVEYOR & MAPPER
  - R = RADIUS
  - RGE. = RANGE
  - R/W = RIGHT OF WAY
  - SEC. = SECTION
  - TWP. = TOWNSHIP



MATCH LINE (SEE SHEET 3 OF 7)

MATCH LINE (SEE SHEET 7 OF 7)



**LINE DATA**

NUMBER	BEARING	DISTANCE
L1	N 45°00'00" E	61.18'
L2	N 45°00'00" E	17.31'
L3	N 45°00'00" E	43.88'
L4	N 90°00'00" E	157.46'
L5	N 90°00'00" E	127.16'
L6	N 01°07'29" E	95.18'
L7	N 02°01'53" E	1.10'
L8	N 02°01'53" E	94.02'

**CURVE DATA**

NUMBER	ARC LENGTH	RADIUS	DELTA ANGLE	CHORD BEARING	CHORD LENGTH
C1	248.13'	215.00'	66°07'29"	N 58°56'16" E	234.59'
C2	157.50'	185.00'	48°46'44"	N 48°15'53" E	152.79'
C3	1082.23'	1315.00'	47°09'14"	N 49°04'38" E	1051.95'
C4	118.65'	94.00'	72°19'12"	S 36°32'43" E	110.93'
C5	180.13'	487.00'	21°11'32"	S 10°12'40" W	179.10'
C6	247.09'	133.00'	106°26'44"	S 32°24'58" E	213.06'
C9	201.97'	175.00'	66°07'29"	S 56°56'16" W	190.94'
C10	63.52'	63.00'	66°07'29"	N 58°56'16" E	278.23'

- LEGEND:**
- ⊕ = QUARTER SECTION CORNER
  - ⊙ = FOUND MONUMENT AS NOTED
  - ⊙ = SET 5/8" I.R.C. STAMPED "ERDMAN ANTHONY LB7334"
  - ⊙ = SET 5/8" I.R.C. STAMPED "ERDMAN ANTHONY LB7334 PRM"
  - ⊙ = SET MAG NAIL WITH WASHER STAMPED "EA LB7334"
  - ⊙ = SET MAG NAIL WITH WASHER STAMPED "EA LB7334 PRM"
  - ⊙ = SET MAG NAIL WITH WASHER STAMPED "EA LB7334 PCP"

**ROYAL PALM BEACH COMMONS**  
SECTION 26, TOWNSHIP 43 SOUTH, RANGE 41 EAST  
VILLAGE OF ROYAL PALM BEACH  
PALM BEACH COUNTY, FLORIDA

**ERDMAN ANTHONY**  
1402 ROYAL PALM BEACH BOULEVARD  
SUITE 500  
ROYAL PALM BEACH, FL 33411  
TEL: 561-753-9723  
WWW.ERDMANANTHONY.COM  
© 2014 ERDMAN ANTHONY

SHEET 2 OF 7