

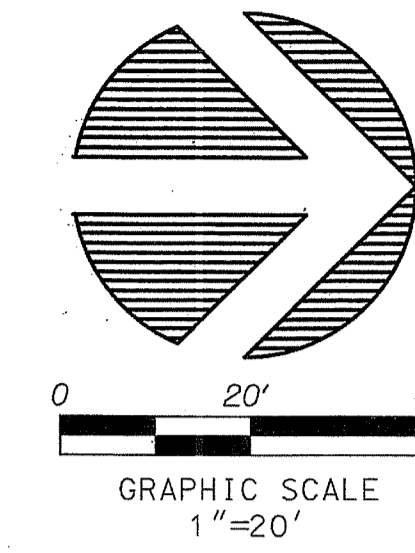


SURVEYING & MAPPING  
Prepared by: Jeff S. Hodapp, P.S.M.  
Certificate of Authorization No. LB7264  
949A Clint Moore Road  
Boca Raton, Florida 33487  
Tel: (561) 241-9988  
Fax: (561) 241-5182

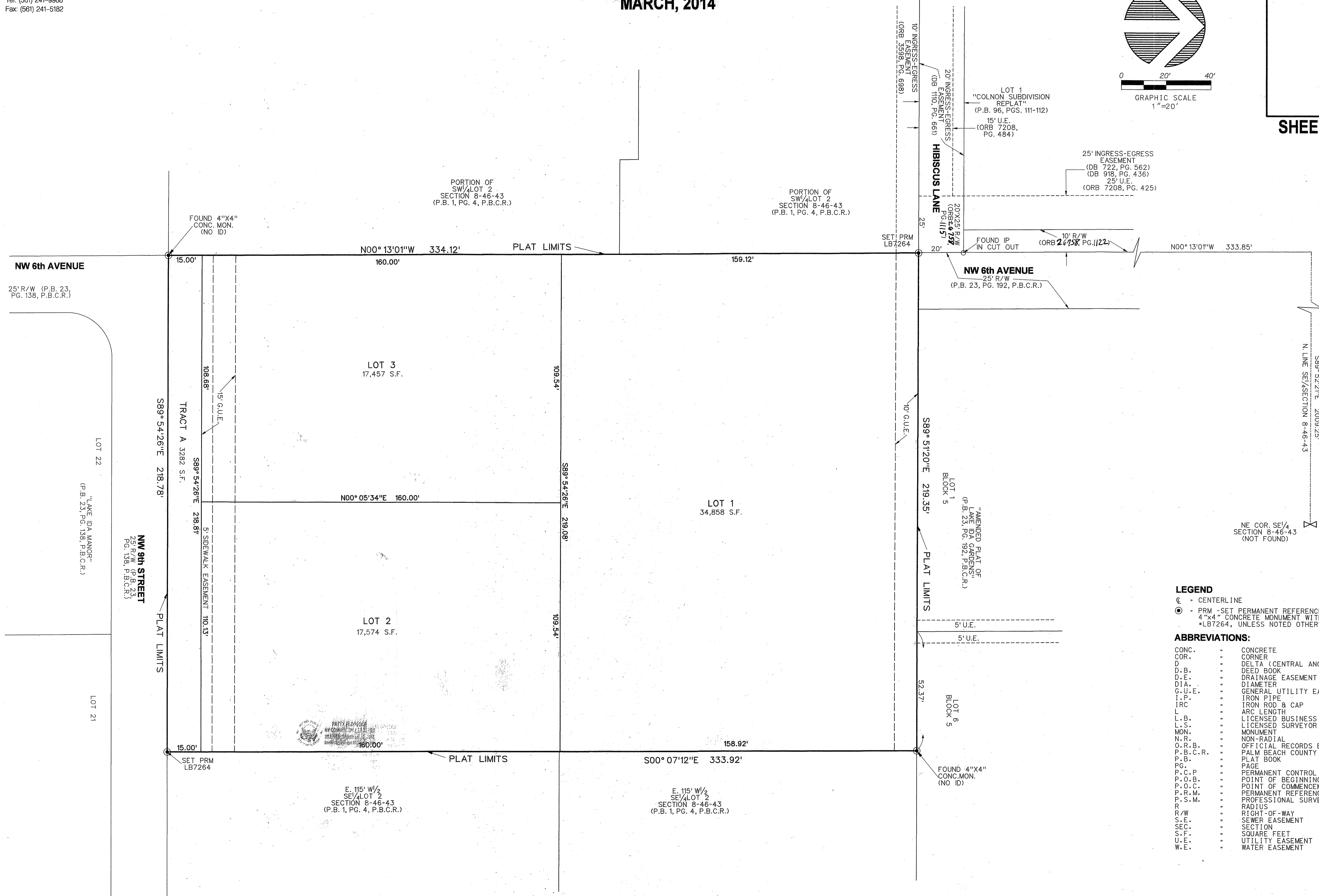
# 1001 HIBISCUS LANE PLAT

A REPLAT OF A PORTION OF LOT 2, "SECTION 8, TOWNSHIP 46 SOUTH,  
RANGE 43 EAST" (P.B. 1, PG. 4, P.B.C.R.)  
CITY OF DELRAY BEACH, PALM BEACH COUNTY, FLORIDA  
MARCH, 2014

35



SHEET 2 OF 2



- LEGEND**
- ⊙ = CENTERLINE
  - ⊙ = PRM - SET PERMANENT REFERENCE MONUMENT
  - ⊙ = 4"x4" CONCRETE MONUMENT WITH ALUMINUM DISK
  - \*LB7264, UNLESS NOTED OTHERWISE
- ABBREVIATIONS:**
- CONC. = CONCRETE
  - COR. = CORNER
  - D = DELTA (CENTRAL ANGLE)
  - D.B. = DEED BOOK
  - D.E. = DRAINAGE EASEMENT
  - DIA. = DIAMETER
  - G.U.E. = GENERAL UTILITY EASEMENT
  - I.P. = IRON PIPE
  - IRC = IRON ROD & CAP
  - L = ARC LENGTH
  - L.B. = LICENSED BUSINESS
  - L.S. = LICENSED SURVEYOR
  - MON. = MONUMENT
  - N.R. = NON-RADIAL
  - O.R.B. = OFFICIAL RECORDS BOOK
  - P.B.C.R. = PALM BEACH COUNTY RECORDS
  - P.B. = PLAT BOOK
  - PG. = PAGE
  - P.C.P. = PERMANENT CONTROL POINT
  - P.O.B. = POINT OF BEGINNING
  - P.O.C. = POINT OF COMMENCEMENT
  - P.R.M. = PERMANENT REFERENCE MONUMENT
  - P.S.M. = PROFESSIONAL SURVEYOR & MAPPER
  - R = RADIUS
  - R/W = RIGHT-OF-WAY
  - S.E. = SEWER EASEMENT
  - SEC. = SECTION
  - S.F. = SQUARE FEET
  - U.E. = UTILITY EASEMENT
  - W.E. = WATER EASEMENT