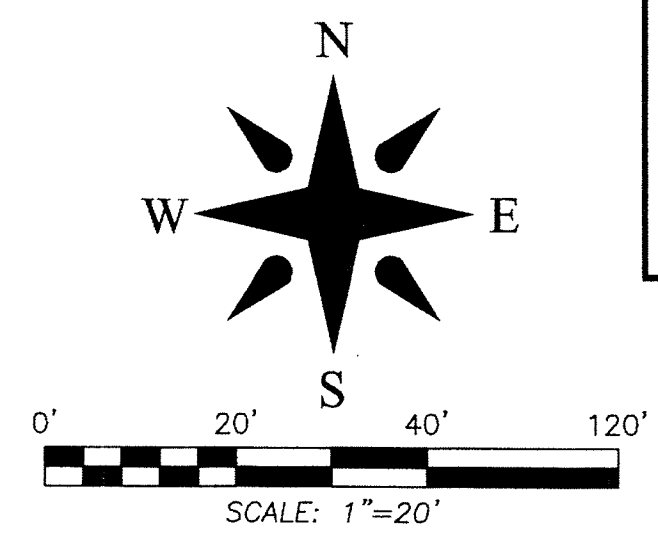
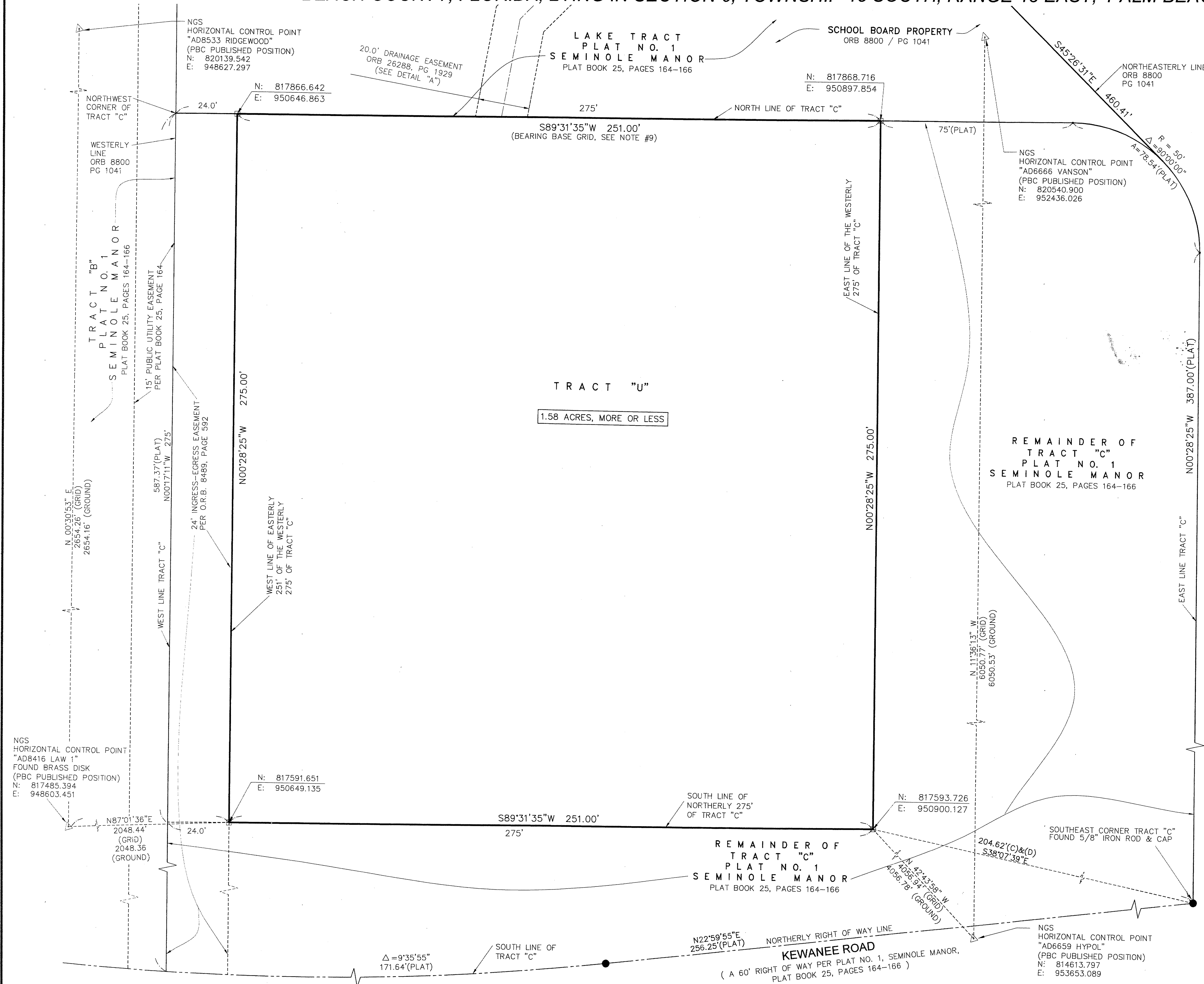


LAKE CLARKE SHORES UTILITY SITE

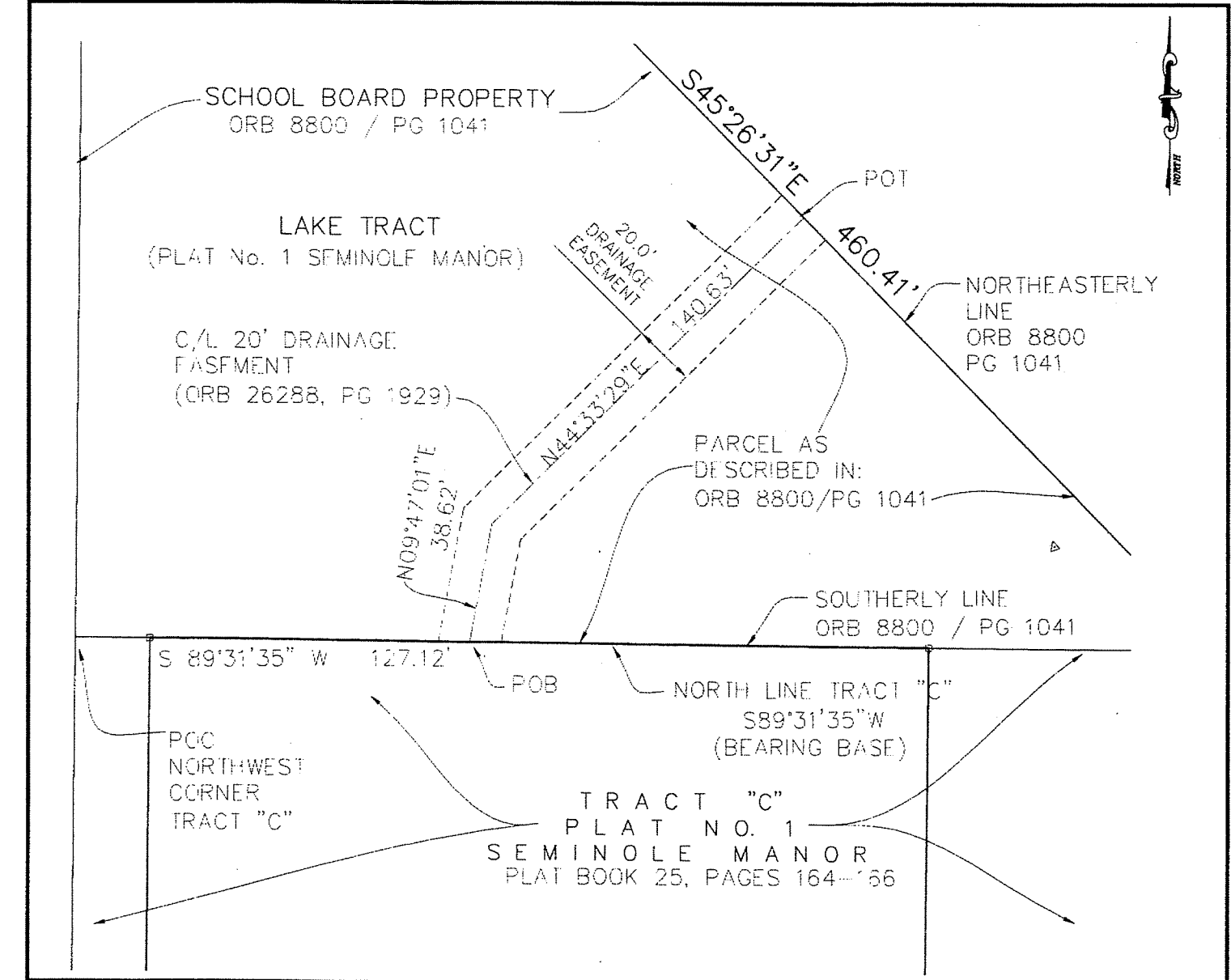
2

BEING A REPLAT OF A PORTION OF TRACT C, PLAT No. 1 SEMINOLE MANOR
ACCORDING TO THE PLAT THEREOF, RECORDED IN PLAT BOOK 25, PAGES 164 THROUGH 166, INCLUSIVE, PUBLIC RECORDS OF PALM
BEACH COUNTY, FLORIDA, LYING IN SECTION 6, TOWNSHIP 45 SOUTH, RANGE 43 EAST, PALM BEACH COUNTY, FLORIDA



ABBREVIATIONS AND SYMBOLS

- = SET 4"x4" CONCRETE MONUMENT WITH DISK
- STAMPED "P.R.M. LB 7860"
- C/L, E = CENTERLINE
- R/W = RIGHT OF WAY
- P.B. = PLAT BOOK
- PG(S) = PAGES
- SEC. = SECTION
- TWP. = TOWNSHIP
- RGE. = RANGE
- U.E. = UTILITY EASEMENT
- D.E. = DRAINAGE EASEMENT
- D.B. = DEED BOOK
- A = ARC LENGTH
- Δ = CENTRAL ANGLE
- R = RADIUS
- C.B. = CHORD BEARING
- L.S. = LICENSED SURVEYOR
- P.O.B. = POINT OF BEGINNING
- P.O.C. = POINT OF COMMENCEMENT
- P.O.T. = POINT OF TERMINUS
- P.B.C. = PALM BEACH COUNTY
- P.R.M. = PERMANENT REFERENCE MONUMENT
- N = NORTHING
- E = EASTING
- C = CALCULATED
- GRID = GRID DISTANCE
- O.R.B. = OFFICIAL RECORDS BOOK
- D = DEED
- NGS = NATIONAL GEODETIC SURVEY



DETAIL "A"
NOT TO SCALE

PLAT OF
LAKE CLARKE SHORES,
UTILITY SITE

This instrument prepared by:
Thomas C. Vokoun in the office of
AECOM Technical Services, Inc.
3550 SW Corporate Parkway,
Palm City, Florida 34990

AECOM AECOM Technical Services, Inc.
3550 SW Corporate Parkway,
Palm City, FL 34990
T: 772.286.3883 F: 772.286.3625
Certificate of Authorization: 8115-23187860
www.aecom.com

FIELD:	JOB No.: 60224758	F.B. PG.
OFFICE: DLP	DATE: MAY, 2013	DWG. No.:
C'KD:	REF:	SHEET 2 OF 2