

THIS INSTRUMENT PREPARED BY  
 DAVID P. LINDLEY  
 OF  
**CAULFIELD and WHEELER, INC.**  
 SURVEYORS - ENGINEERS - PLANNERS  
 7900 GLADES ROAD, SUITE 100  
 BOCA RATON, FLORIDA 33434 - (561)392-1991  
 JUNE - 2013

# ROYAL PALM POLO

A PLANNED UNIT DEVELOPMENT  
 BEING A PORTION OF THE SOUTHEAST ONE-QUARTER OF SECTION 34, TOWNSHIP 46 SOUTH, RANGE 42 EAST,  
 CITY OF BOCA RATON, PALM BEACH COUNTY, FLORIDA

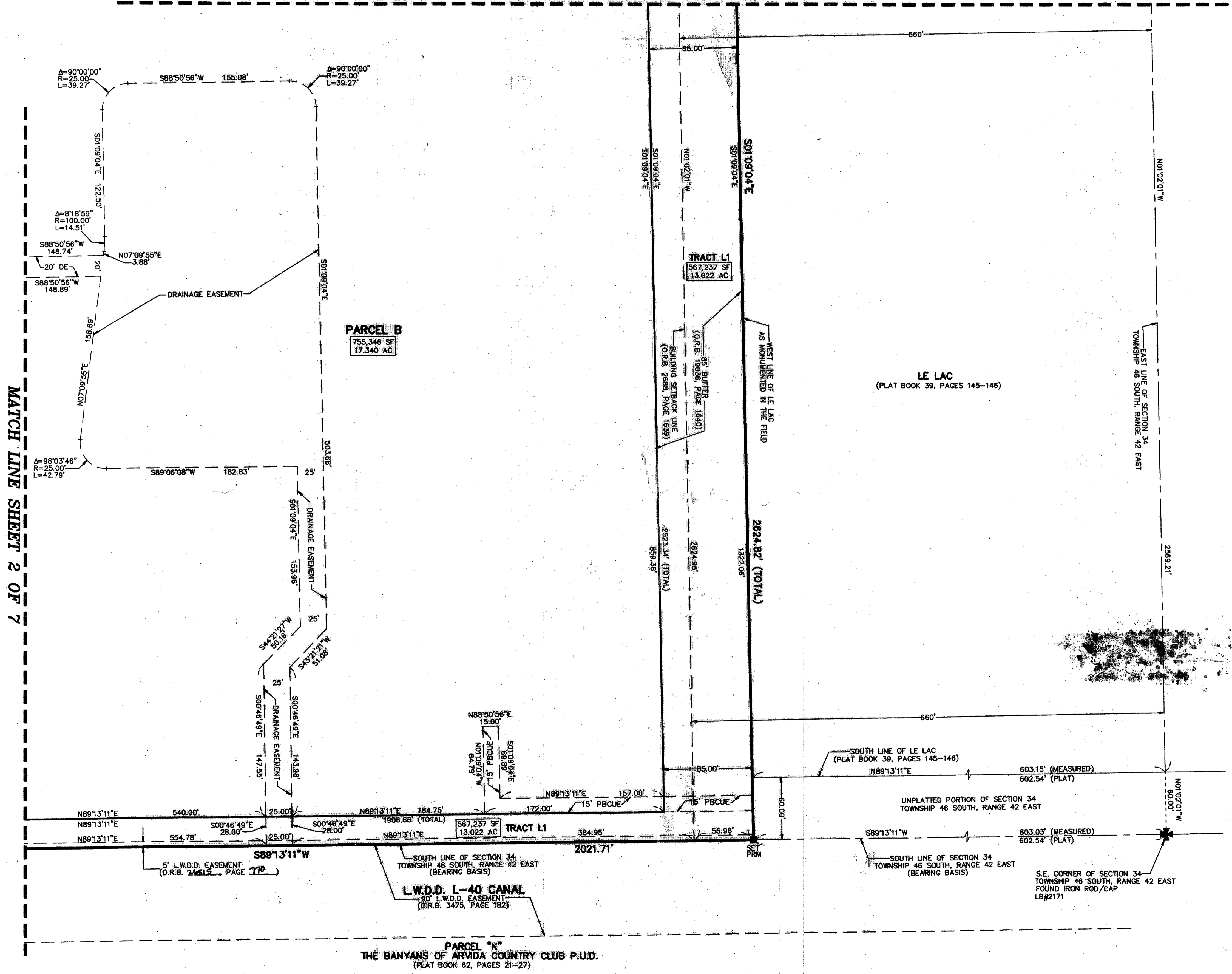
200

STATE OF FLORIDA  
 COUNTY OF PALM BEACH  
 THIS PLAT WAS FILED FOR  
 RECORD AT \_\_\_\_\_ M.  
 THIS \_\_\_\_\_ DAY OF \_\_\_\_\_  
 A.D. 20\_\_\_\_ AND DULY RECORDED  
 IN PLAT BOOK \_\_\_\_\_ ON  
 PAGES \_\_\_\_\_ AND \_\_\_\_\_  
 SHARON R. BOCK  
 CLERK AND COMPTROLLER

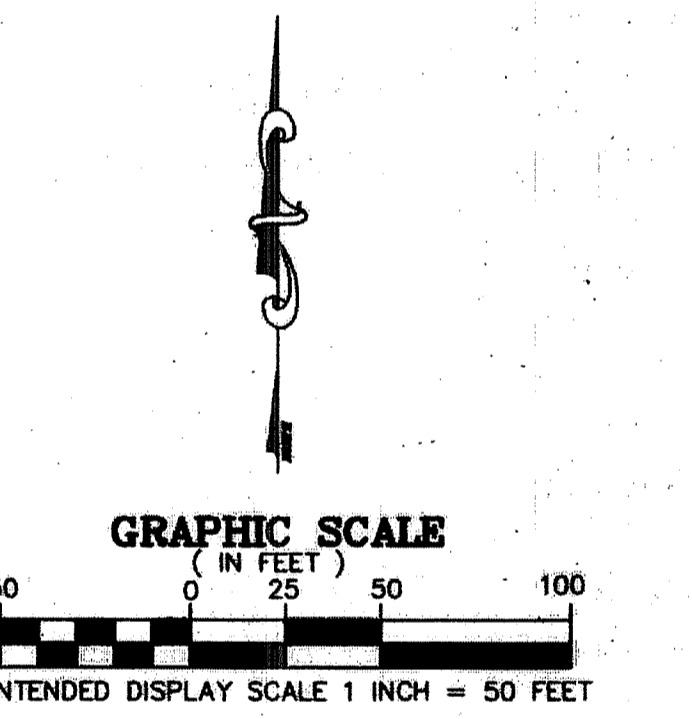
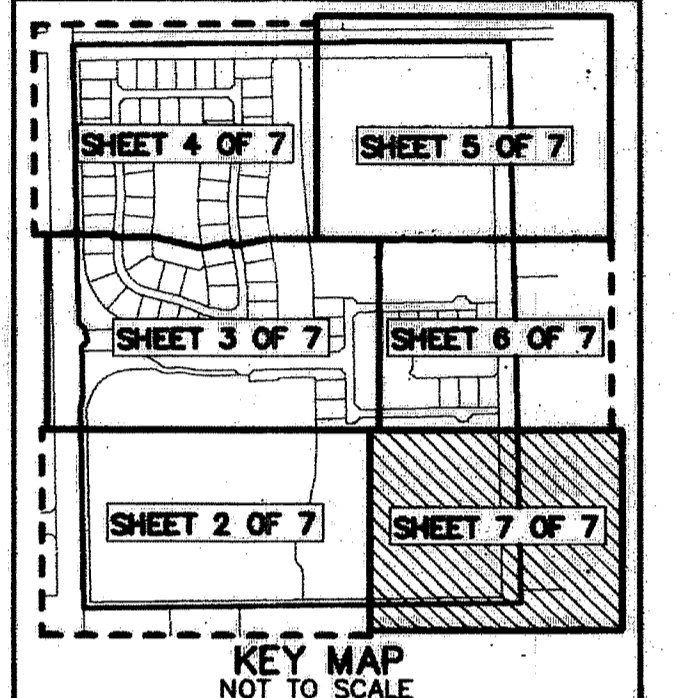
BY: \_\_\_\_\_  
 DEPUTY CLERK

**SHEET 7 OF 7**

MATCH LINE SHEET 6 OF 7



MATCH LINE SHEET 2 OF 7



- LEGEND/ABBREVIATIONS**
- SET PRM - INDICATES PERMANENT REFERENCE MONUMENT 4"x4"x24" CONCRETE MONUMENT WITH DISK STAMPED PRM LB#3591 UNLESS OTHERWISE NOTED
  - ⊙ - INDICATES PERMANENT CONTROL POINT
  - ⊕ - CENTERLINE
  - Δ - CENTRAL ANGLE
  - R - RADIUS
  - L - ARC LENGTH
  - AC - ACRES
  - CB - CHORD BEARING
  - CD - CHORD DISTANCE
  - DE - DRAINAGE EASEMENT
  - FPL - FLORIDA POWER & LIGHT CO.
  - PBCUE - PALM BEACH COUNTY UTILITY EASEMENT
  - LAE - LIMITED ACCESS EASEMENT
  - LB - LICENSED BUSINESS
  - LMAE - LAKE MAINTENANCE ACCESS EASEMENT
  - LME - LAKE MAINTENANCE EASEMENT
  - LSE - LIFT STATION EASEMENT
  - L.W.D.D. - LAKE WORTH DRAINAGE DISTRICT
  - NO. - NUMBER
  - N.T.S. - NOT TO SCALE
  - O.R.B. - OFFICIAL RECORD BOOK
  - (R) - RADIAL LINE
  - SF - SQUARE FEET
  - SWE - SIDEWALK EASEMENT
  - UE - UTILITY EASEMENT