

THIS INSTRUMENT PREPARED BY
 DAVID P. LINDLEY
 OF
CAULFIELD and WHEELER, INC.
 SURVEYORS - ENGINEERS - PLANNERS
 7900 GLADES ROAD, SUITE 100
 BOCA RATON, FLORIDA 33434 - (561)392-1991
 JUNE - 2013

ROYAL PALM POLO

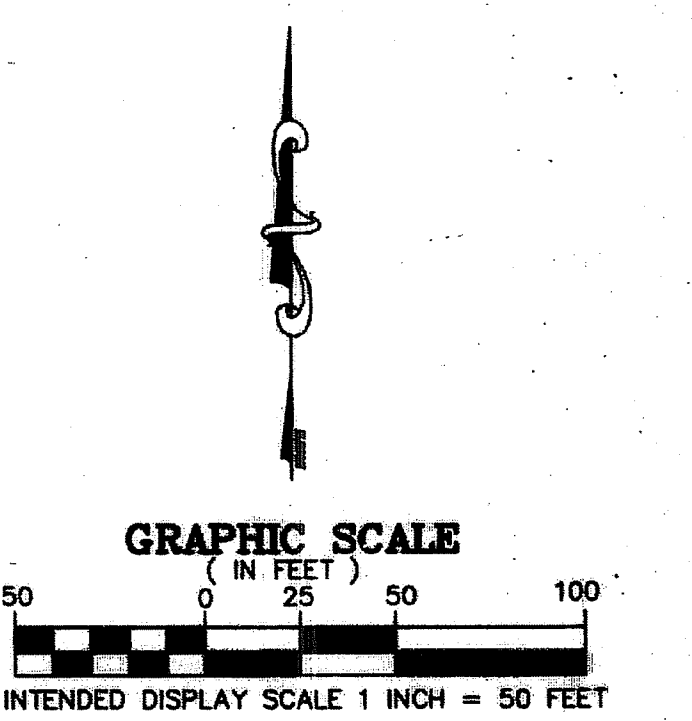
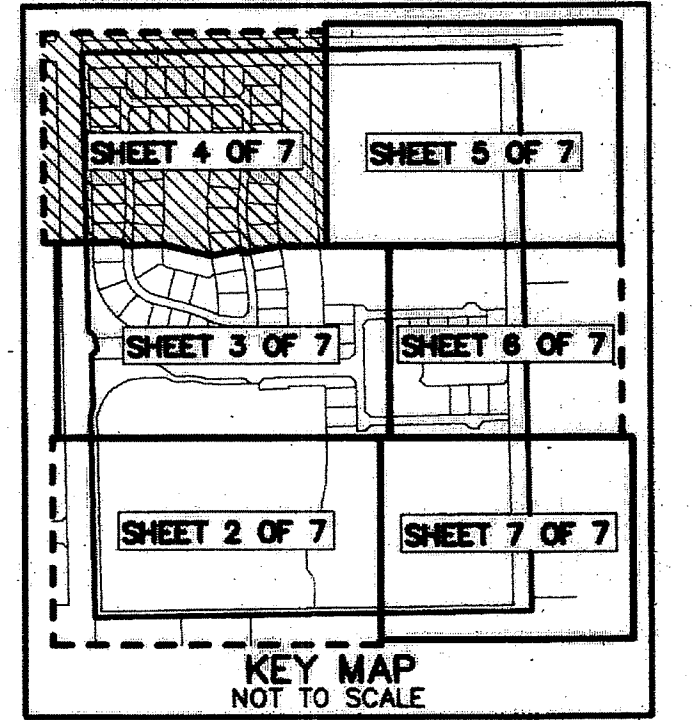
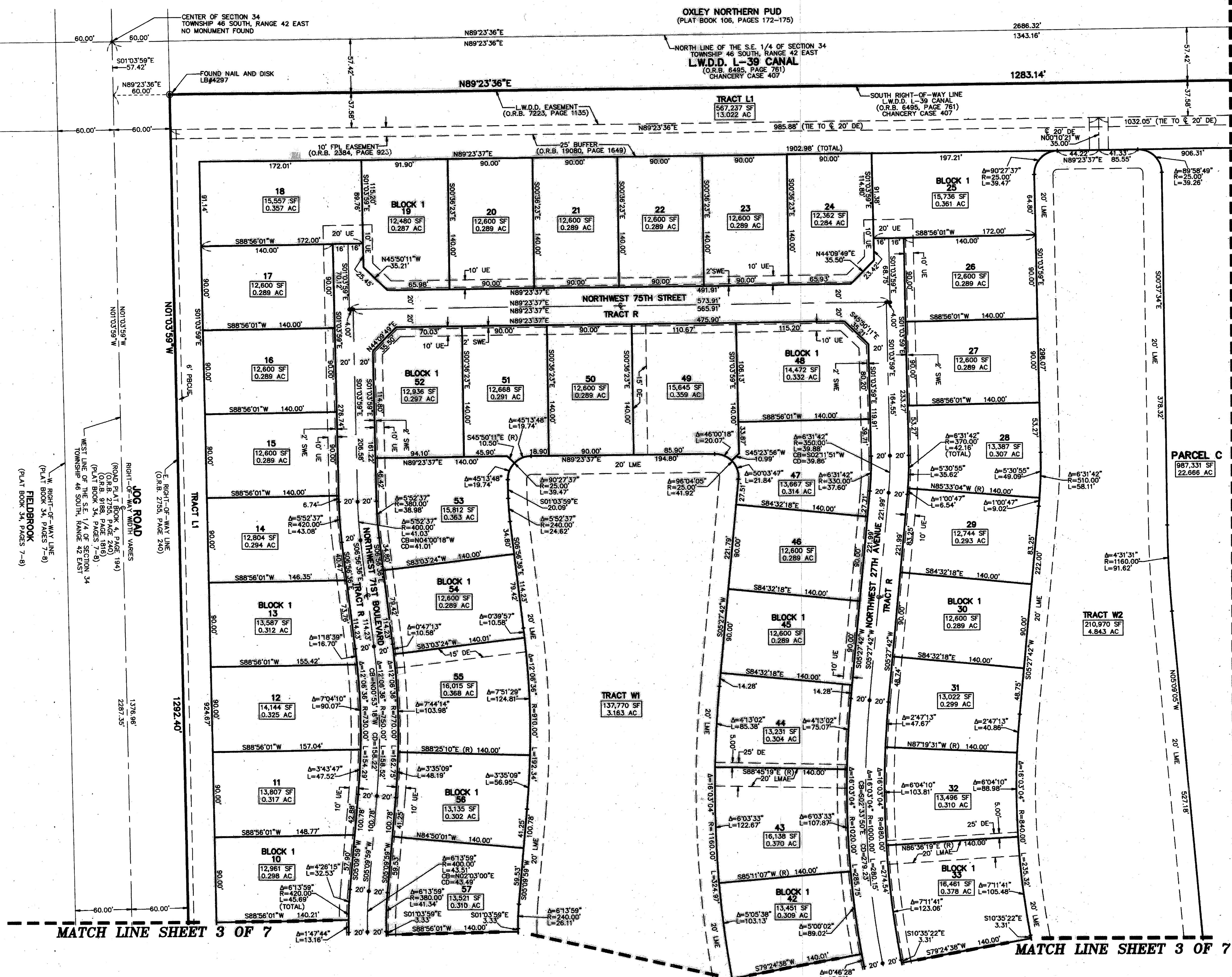
A PLANNED UNIT DEVELOPMENT
 BEING A PORTION OF THE SOUTHEAST ONE-QUARTER OF SECTION 34,
 TOWNSHIP 46 SOUTH, RANGE 42 EAST,
 CITY OF BOCA RATON, PALM BEACH COUNTY, FLORIDA

197

STATE OF FLORIDA
 COUNTY OF PALM BEACH
 THIS PLAT WAS FILED FOR
 RECORD AT _____ M.
 THIS _____ DAY OF _____
 A.D. 20____ AND DULY RECORDED
 IN PLAT BOOK _____ ON
 PAGES _____ AND _____
 SHARON R. BOCK
 CLERK AND COMPTROLLER

BY: _____
 DEPUTY CLERK

SHEET 4 OF 7



- LEGEND/ABBREVIATIONS**
- SET PRM - INDICATES PERMANENT REFERENCE MONUMENT 4"x4"x24" CONCRETE MONUMENT WITH DISK STAMPED PRM LB#3591 UNLESS OTHERWISE NOTED
 - ⊙ - INDICATES PERMANENT CONTROL POINT
 - C - CENTERLINE
 - A - CENTRAL ANGLE
 - R - RADIUS
 - L - ARC LENGTH
 - AC - ACRES
 - CB - CHORD BEARING
 - CD - CHORD DISTANCE
 - DE - DRAINAGE EASEMENT
 - FPL - FLORIDA POWER & LIGHT CO.
 - PBCUE - PALM BEACH COUNTY UTILITY EASEMENT
 - LAE - LIMITED ACCESS EASEMENT
 - LB - LICENSED BUSINESS
 - LMAE - LAKE MAINTENANCE ACCESS EASEMENT
 - LME - LAKE MAINTENANCE EASEMENT
 - LSE - LIFT STATION EASEMENT
 - L.W.D.D. - LAKE WORTH DRAINAGE DISTRICT
 - NO. - NUMBER
 - N.T.S. - NOT TO SCALE
 - O.R.B. - OFFICIAL RECORD BOOK
 - (R) - RADIAL LINE
 - SF - SQUARE FEET
 - SWE - SIDEWALK EASEMENT
 - UE - UTILITY EASEMENT

MATCH LINE SHEET 3 OF 7

MATCH LINE SHEET 3 OF 7

MATCH LINE SHEET 5 OF 7