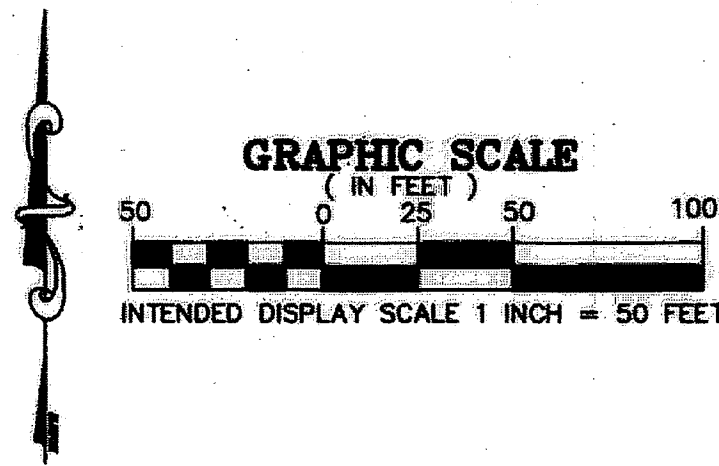
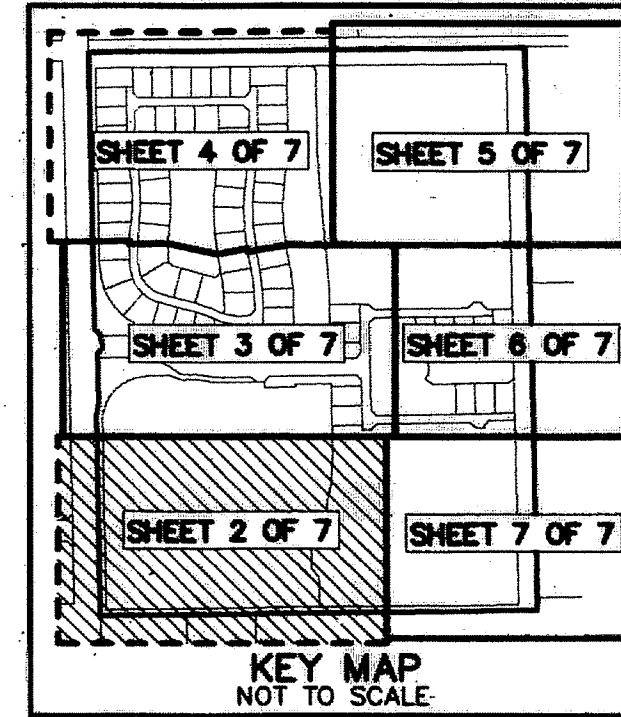


THIS INSTRUMENT PREPARED BY
DAVID P. LINDLEY
OF
CAULFIELD and WHEELER, INC.
SURVEYORS - ENGINEERS - PLANNERS
7900 GLADES ROAD, SUITE 100
BOCA RATON, FLORIDA 33434 - (561)392-1991
JUNE - 2013



ROYAL PALM POLO

A PLANNED UNIT DEVELOPMENT
BEING A PORTION OF THE SOUTHEAST ONE-QUARTER OF SECTION 34, TOWNSHIP 46 SOUTH, RANGE 42 EAST,
CITY OF BOCA RATON, PALM BEACH COUNTY, FLORIDA



195

STATE OF FLORIDA
COUNTY OF PALM BEACH
THIS PLAT WAS FILED FOR
RECORD AT _____ M.
THIS _____ DAY OF _____
A.D. 20____ AND DULY RECORDED
IN PLAT BOOK _____ AND
PAGES _____ AND _____

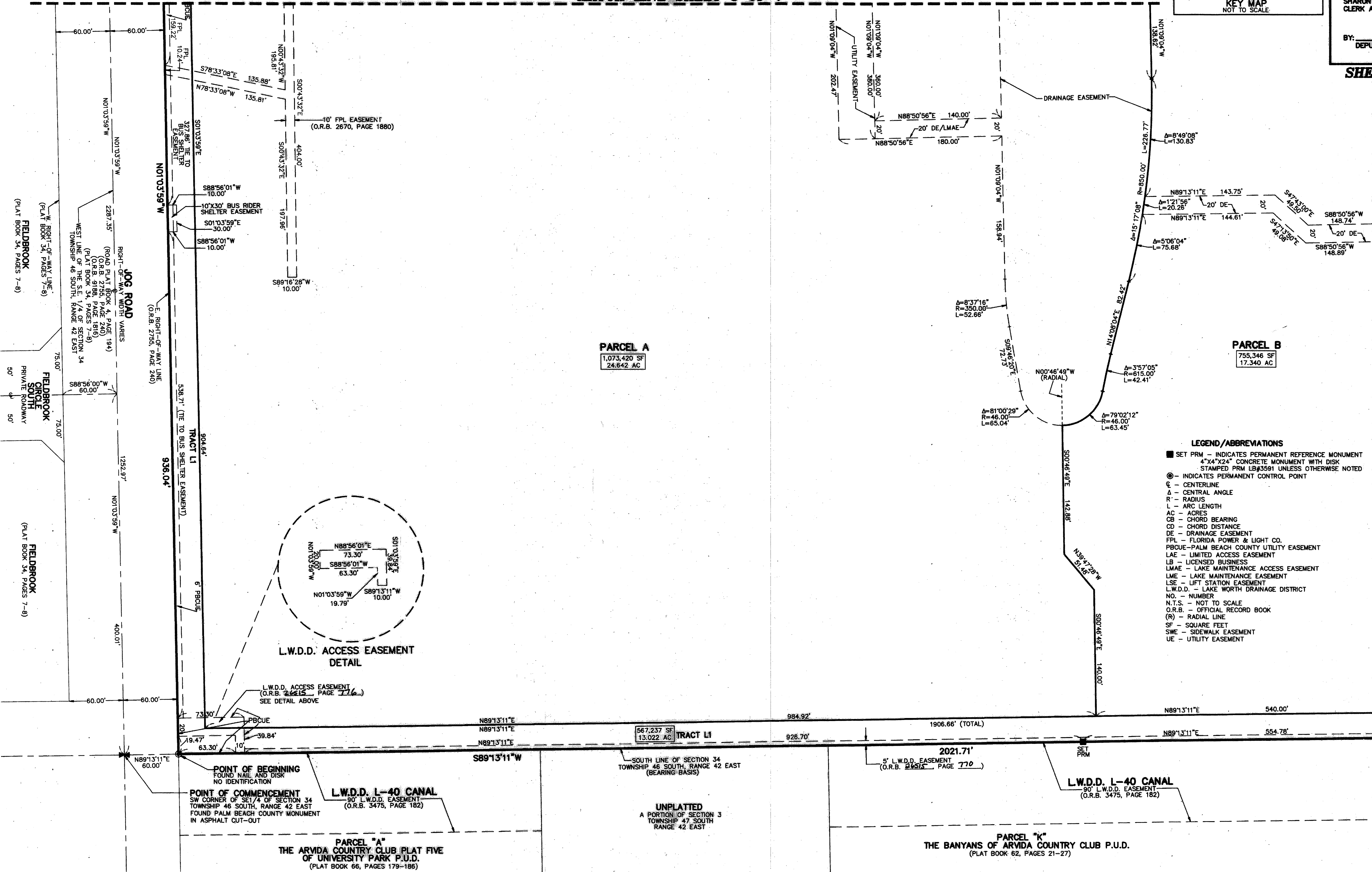
SHARON R. BOCK
CLERK AND COMPTROLLER

BY: _____
DEPUTY CLERK

SHEET 2 OF 7

MATCH LINE SHEET 3 OF 7

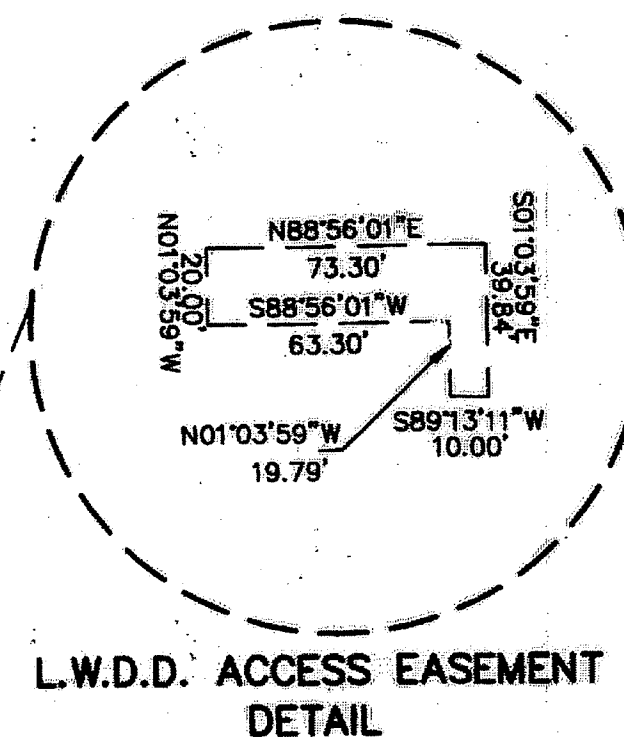
MATCH LINE SHEET 7 OF 7



PARCEL A
1,073,420 SF
24.642 AC

PARCEL B
755,346 SF
17.340 AC

- LEGEND/ABBREVIATIONS**
- SET PRM - INDICATES PERMANENT REFERENCE MONUMENT 4"x4"x24" CONCRETE MONUMENT WITH DISK STAMPED PRM LB#3591 UNLESS OTHERWISE NOTED
 - - INDICATES PERMANENT CONTROL POINT
 - CL - CENTERLINE
 - Δ - CENTRAL ANGLE
 - R - RADIUS
 - L - ARC LENGTH
 - AC - ACRES
 - CB - CHORD BEARING
 - CD - CHORD DISTANCE
 - DE - DRAINAGE EASEMENT
 - FPL - FLORIDA POWER & LIGHT CO.
 - PBCUE - PALM BEACH COUNTY UTILITY EASEMENT
 - LAE - LIMITED ACCESS EASEMENT
 - LB - LICENSED BUSINESS
 - LMAE - LAKE MAINTENANCE ACCESS EASEMENT
 - LME - LAKE MAINTENANCE EASEMENT
 - LSE - LIFT STATION EASEMENT
 - L.W.D.D. - LAKE WORTH DRAINAGE DISTRICT
 - NO. - NUMBER
 - N.T.S. - NOT TO SCALE
 - O.R.B. - OFFICIAL RECORD BOOK
 - (R) - RADIAL LINE
 - SF - SQUARE FEET
 - SWE - SIDEWALK EASEMENT
 - UE - UTILITY EASEMENT



POINT OF BEGINNING
FOUND NAIL AND DISK
NO IDENTIFICATION

POINT OF COMMENCEMENT
SW CORNER OF SE 1/4 OF SECTION 34
TOWNSHIP 46 SOUTH, RANGE 42 EAST
FOUND PALM BEACH COUNTY MONUMENT
IN ASPHALT CUT-OUT

L.W.D.D. L-40 CANAL
90' L.W.D.D. EASEMENT
(O.R.B. 3475, PAGE 182)

PARCEL "A"
THE ARVIDA COUNTRY CLUB PLAT FIVE
OF UNIVERSITY PARK P.U.D.
(PLAT BOOK 66, PAGES 179-186)

567,237 SF
13,022 AC
TRACT L1

SOUTH LINE OF SECTION 34
TOWNSHIP 46 SOUTH, RANGE 42 EAST
(BEARING-BASIS)

2021.71'
5' L.W.D.D. EASEMENT
(O.R.B. 2654, PAGE 770)

PARCEL "K"
THE BANYANS OF ARVIDA COUNTRY CLUB P.U.D.
(PLAT BOOK 62, PAGES 21-27)