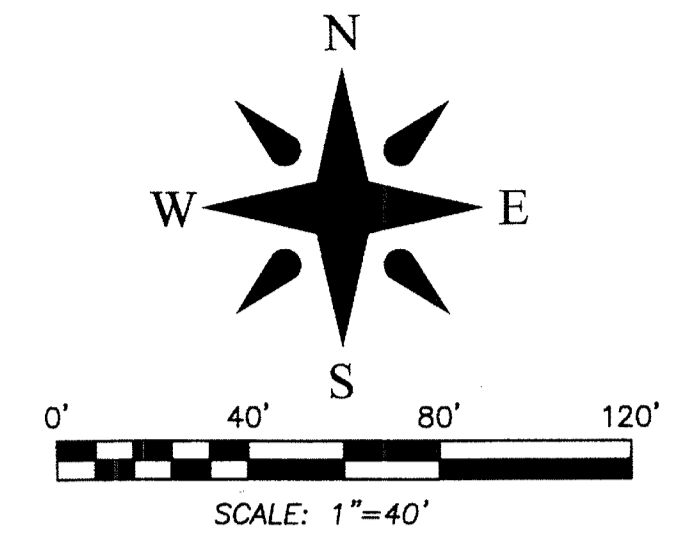


PBOI MEDICAL CAMPUS

LYING IN THE NORTHEAST QUARTER OF SECTION 12, TOWNSHIP 42 SOUTH,
RANGE 42 EAST, CITY OF PALM BEACH GARDENS, PALM BEACH COUNTY, FLORIDA



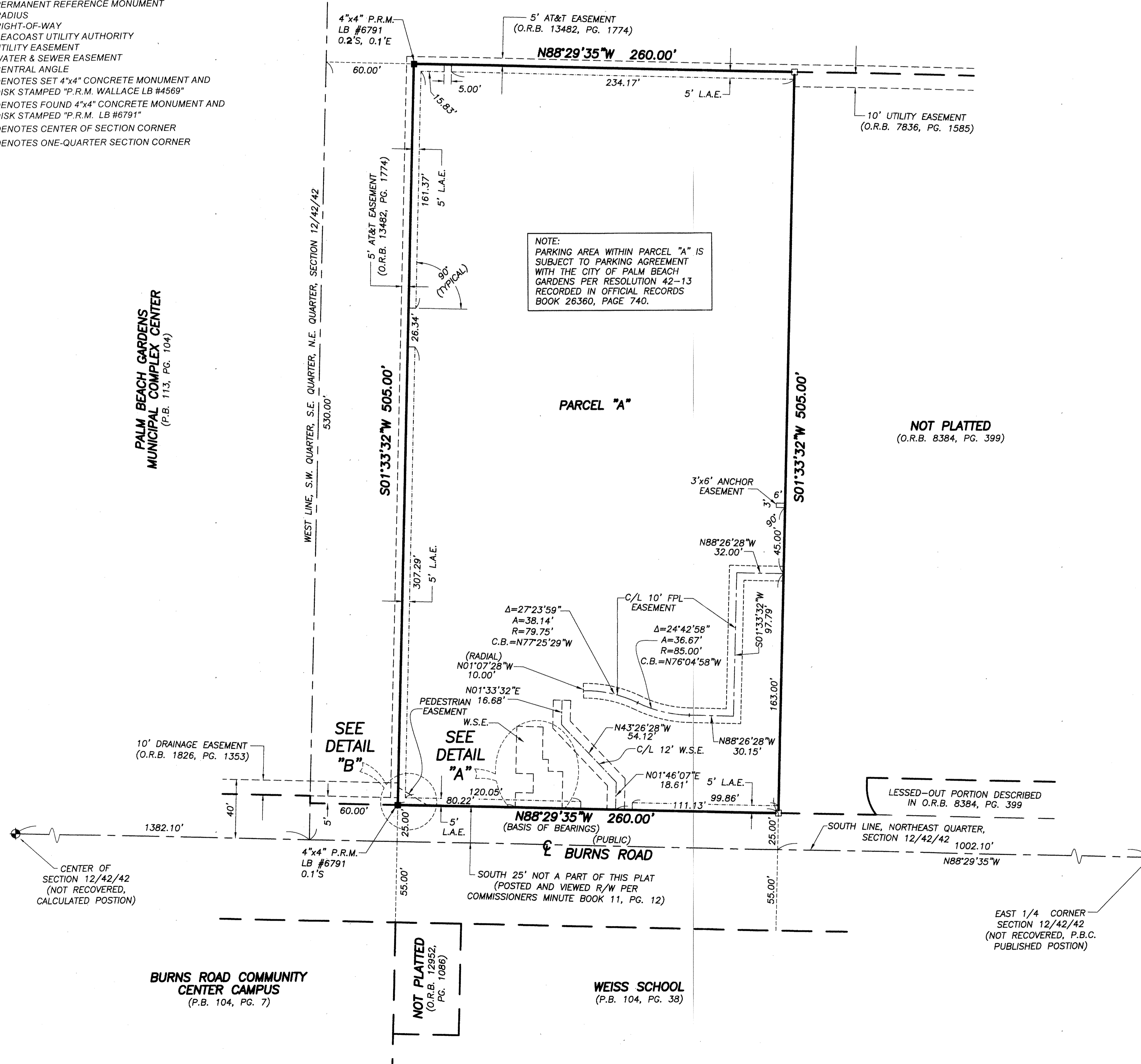
191

ABBREVIATIONS & SYMBOLS

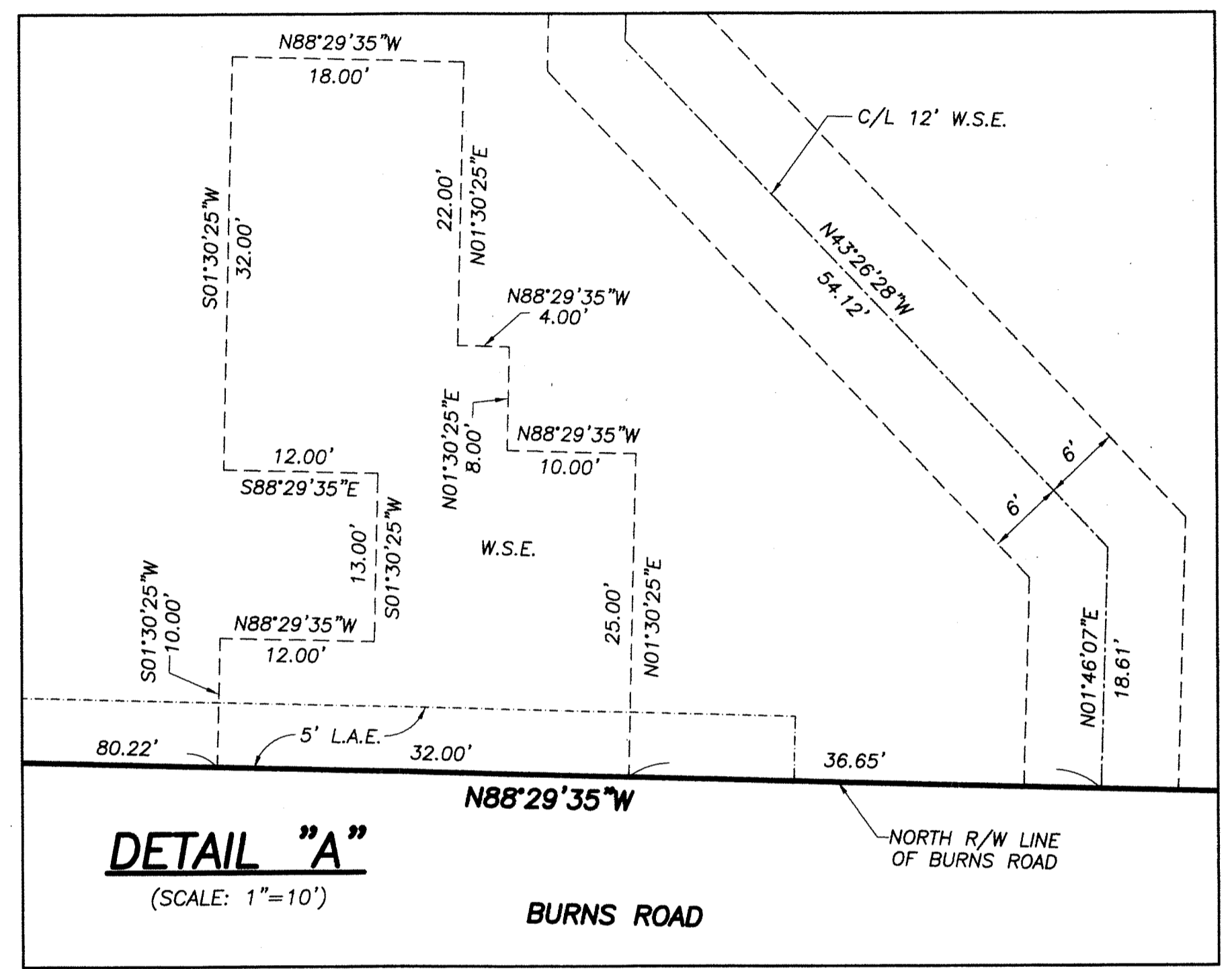
- AT&T = AMERICAN TELEPHONE & TELEGRAPH
- A = ARC
- C.B. = CHORD BEARING
- C/L, ζ = CENTERLINE
- D.B. = DEED BOOK
- FPL = FLORIDA POWER & LIGHT
- L.A.E. = LIMITED ACCESS EASEMENT
- LB = LICENSED BUSINESS
- O.R.B. = OFFICIAL RECORDS BOOK
- P.B. = PLAT BOOK
- PG. = PAGE
- P.O.B. = POINT OF BEGINNING
- P.O.C. = POINT OF COMMENCEMENT
- P.R.M. = PERMANENT REFERENCE MONUMENT
- R = RADIUS
- R/W = RIGHT-OF-WAY
- S.U.A. = SEACOAST UTILITY AUTHORITY
- U.E. = UTILITY EASEMENT
- W.S.E. = WATER & SEWER EASEMENT
- Δ = CENTRAL ANGLE
- \square = DENOTES SET 4"x4" CONCRETE MONUMENT AND DISK STAMPED "P.R.M. WALLACE LB #4569"
- \blacksquare = DENOTES FOUND 4"x4" CONCRETE MONUMENT AND DISK STAMPED "P.R.M. LB #6791"
- \odot = DENOTES CENTER OF SECTION CORNER
- \ominus = DENOTES ONE-QUARTER SECTION CORNER

**PALM BEACH GARDENS
MUNICIPAL COMPLEX CENTER**
(P.B. 113, PG. 104)

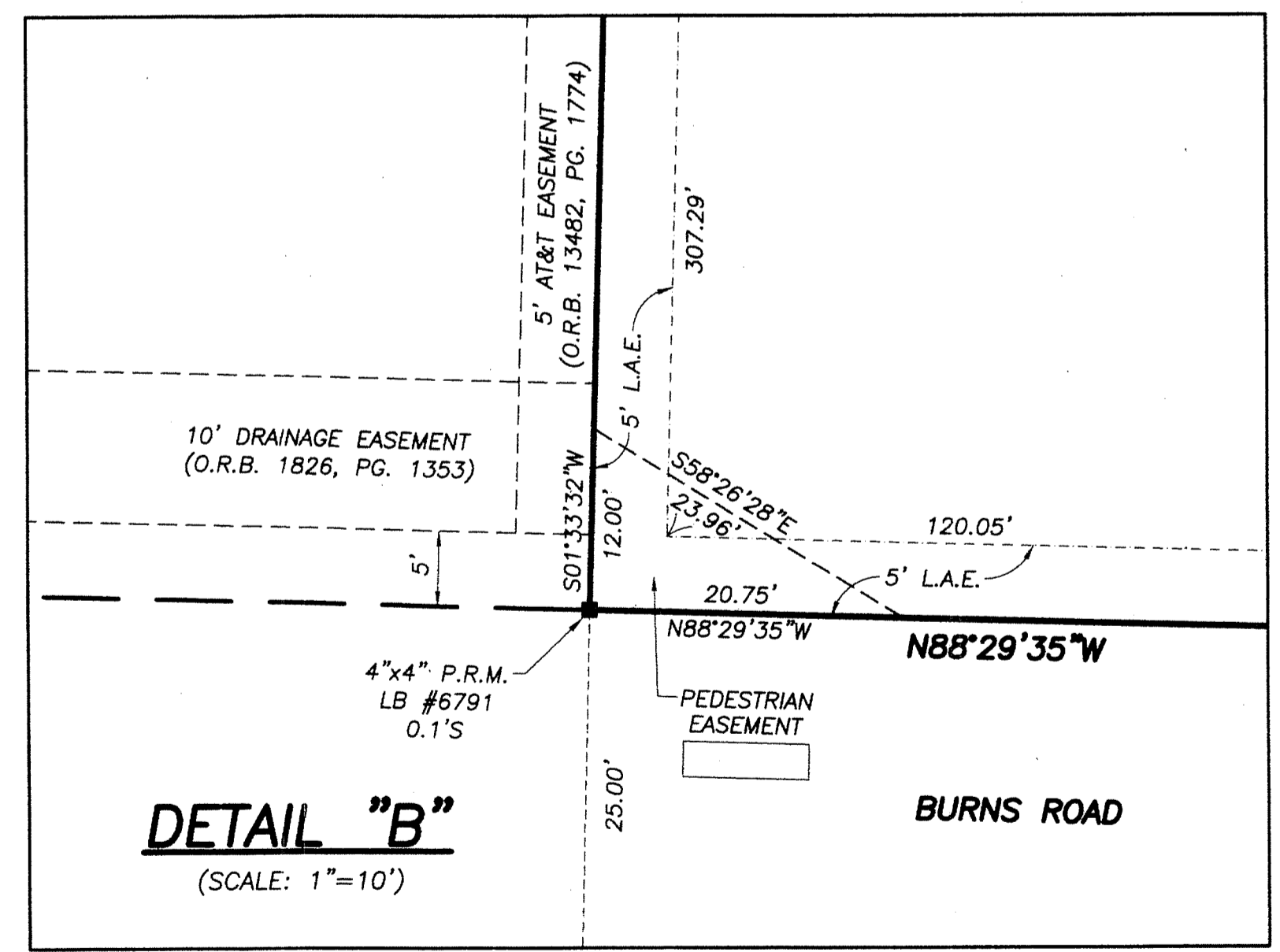
SHEET 2 OF 2



NOTE:
PARKING AREA WITHIN PARCEL "A" IS
SUBJECT TO PARKING AGREEMENT
WITH THE CITY OF PALM BEACH
GARDENS PER RESOLUTION 42-13
RECORDED IN OFFICIAL RECORDS
BOOK 26360, PAGE 740.



DETAIL "A"
(SCALE: 1"=10')



DETAIL "B"
(SCALE: 1"=10')

BOUNDARY PLAT FOR:

PBOI MEDICAL CAMPUS



| | | |
|--------------|---------------------|---------------------|
| FIELD: | JOB No.: 05-1205.6 | F.B. PG. |
| OFFICE: R.C. | DATE: OCT. 11, 2013 | DWG. No.: 05-1205-4 |
| C'KD.: | REF.: 05-1205-5.DWG | SHEET: 2 OF 2 |