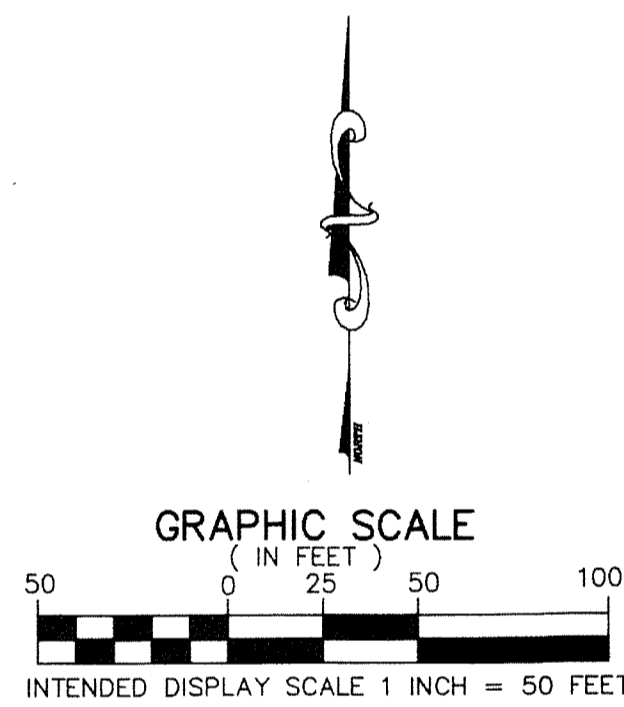
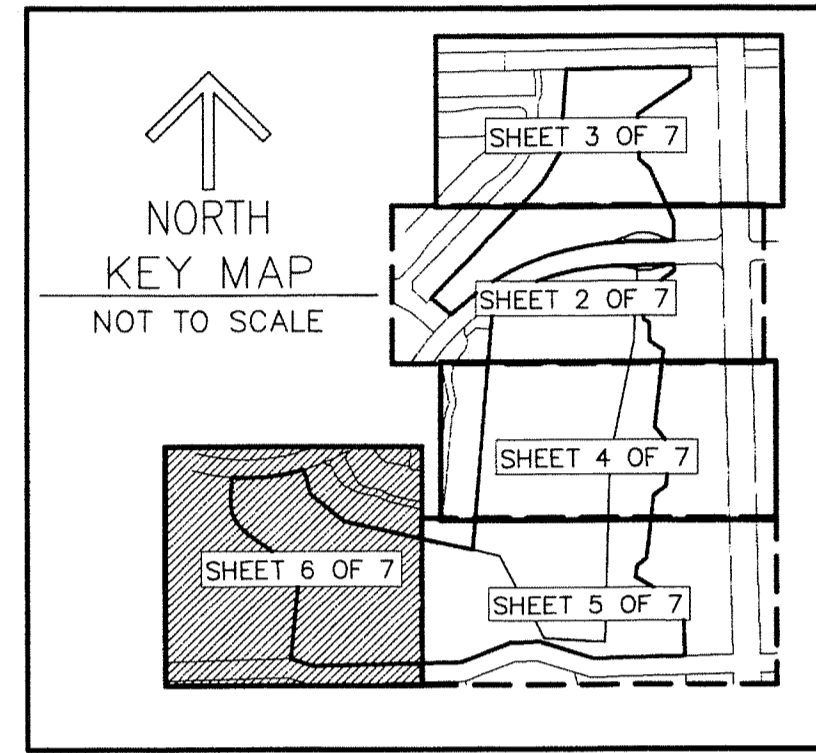


# BOCA POINTE COUNTRY CLUB P.U.D. PLAT TWO

BEING A REPLAT OF TRACT X-1, BOCA POINTE NO. 1, ACCORDING TO THE PLAT THEREOF,  
 AS RECORDED IN PLAT BOOK 42, PAGES 141 THROUGH 143 OF THE PUBLIC RECORDS OF PALM BEACH COUNTY, FLORIDA.  
 TOGETHER WITH  
 CLUBHOUSE TRACT R AND TRACT X-2-R, BOCA POINTE COUNTRY CLUB P.U.D., ACCORDING TO THE PLAT THEREOF,  
 AS RECORDED IN PLAT BOOK 90, PAGES 56 AND 57 OF THE PUBLIC RECORDS OF PALM BEACH COUNTY, FLORIDA.  
 LYING IN SECTION 28, TOWNSHIP 47 SOUTH, RANGE 42 EAST, PALM BEACH COUNTY, FLORIDA.

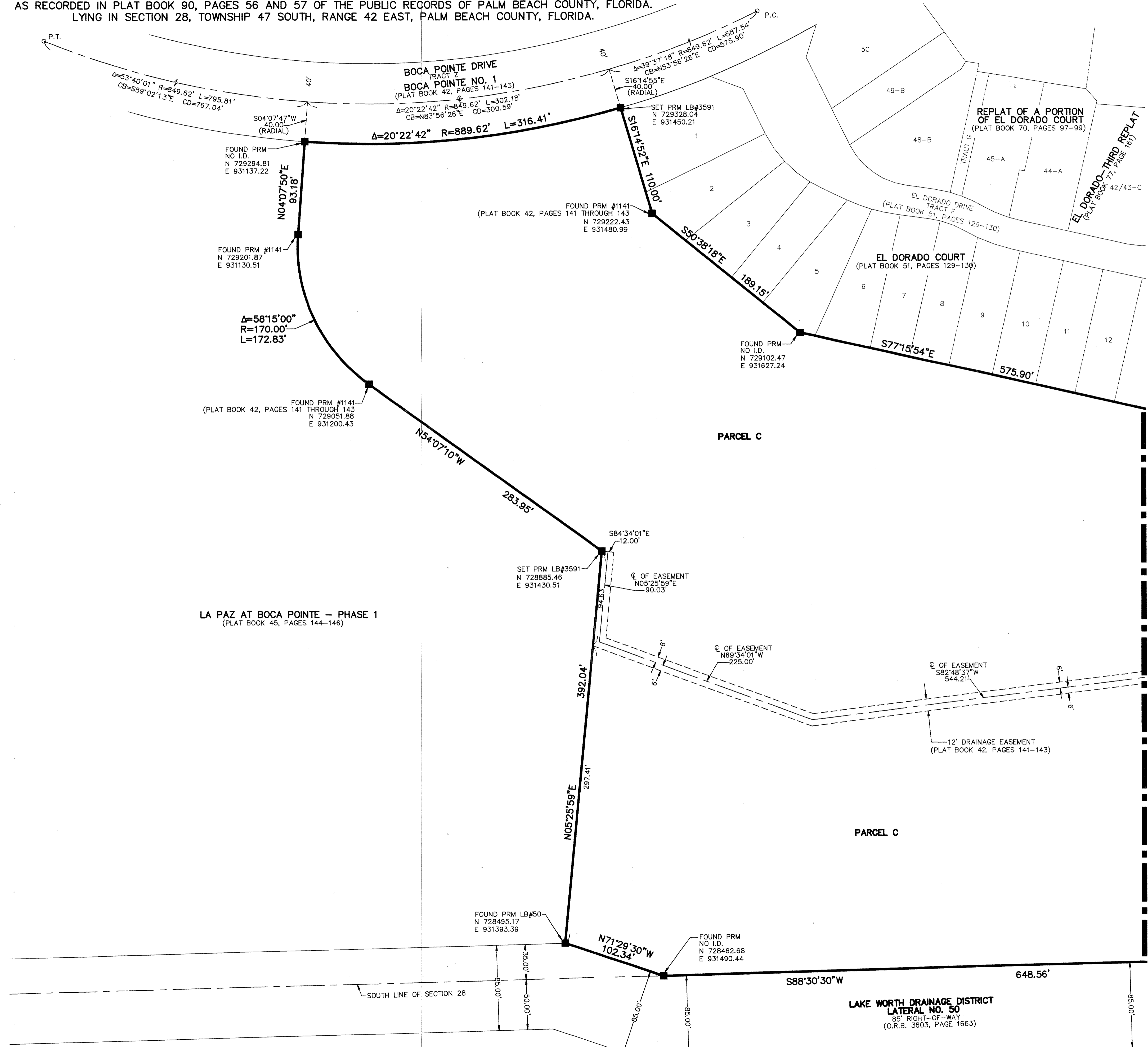
THIS INSTRUMENT PREPARED BY  
 DAVID P. LINDLEY  
 OF  
**CAULFIELD and WHEELER, INC.**  
 SURVEYORS - ENGINEERS - PLANNERS  
 7900 GLADES ROAD, SUITE 100  
 BOCA RATON, FLORIDA 33434 - (561)392-1991  
 JANUARY - 2013



**NOTES**  
**COORDINATES, BEARINGS AND DISTANCES**  
 COORDINATES SHOWN ARE GRID DATUM = NAD 83 1990  
 ADJUSTMENT ZONE = FLORIDA EAST  
 LINEAR UNIT = US SURVEY FEET  
 COORDINATE SYSTEM 1983 STATE PLANE TRANSVERSE  
 MERCATOR PROJECTION  
 ALL DISTANCES ARE GROUND  
 SCALE FACTOR = 1.000029298  
 GROUND DISTANCE X SCALE FACTOR = GRID DISTANCE  
 BEARINGS AS SHOWN HEREON ARE GRID DATUM,  
 NAD 83 1990 ADJUSTMENT, FLORIDA EAST ZONE.

### LEGEND/ABBREVIATIONS

- ⊕ - CENTERLINE
- Δ - DELTA (CENTRAL ANGLE)
- FPL - FLORIDA POWER & LIGHT CO.
- L - ARC LENGTH
- LB - LICENSED BUSINESS
- O.R.B. - OFFICIAL RECORD BOOK
- R - RADIUS
- LAE - LIMITED ACCESS EASEMENT
- PBCUE - PALM BEACH COUNTY UTILITY EASEMENT
- - PRM - DENOTES PERMANENT REFERENCE MONUMENT  
4" x 4" x 24" CONCRETE MONUMENT
- - PCP - DENOTES PERMANENT CONTROL POINT  
NAIL AND METAL DISK STAMPED LB3591
- - DENOTES SET IRON ROD WITH CAP LB3591



STATE OF FLORIDA  
 COUNTY OF PALM BEACH  
 THIS PLAT WAS FILED FOR  
 RECORD AT \_\_\_\_\_ M.  
 THIS \_\_\_\_\_ DAY OF \_\_\_\_\_  
 A.D. 2014 AND DULY RECORDED  
 IN PLAT BOOK \_\_\_\_\_ ON  
 PAGES \_\_\_\_\_ AND \_\_\_\_\_

SHARON R. BOCK  
 CLERK AND COMPTROLLER

BY: \_\_\_\_\_  
 DEPUTY CLERK