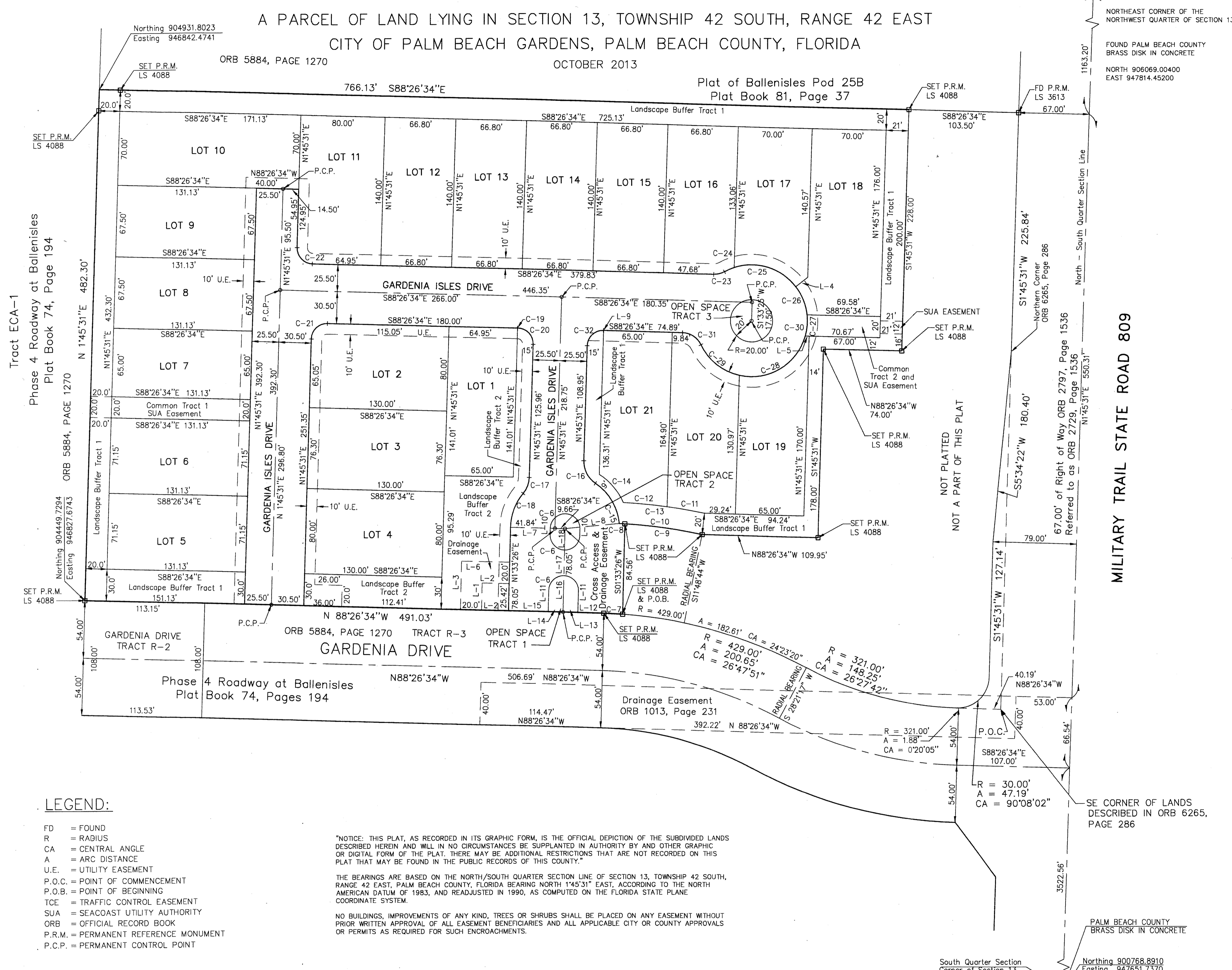
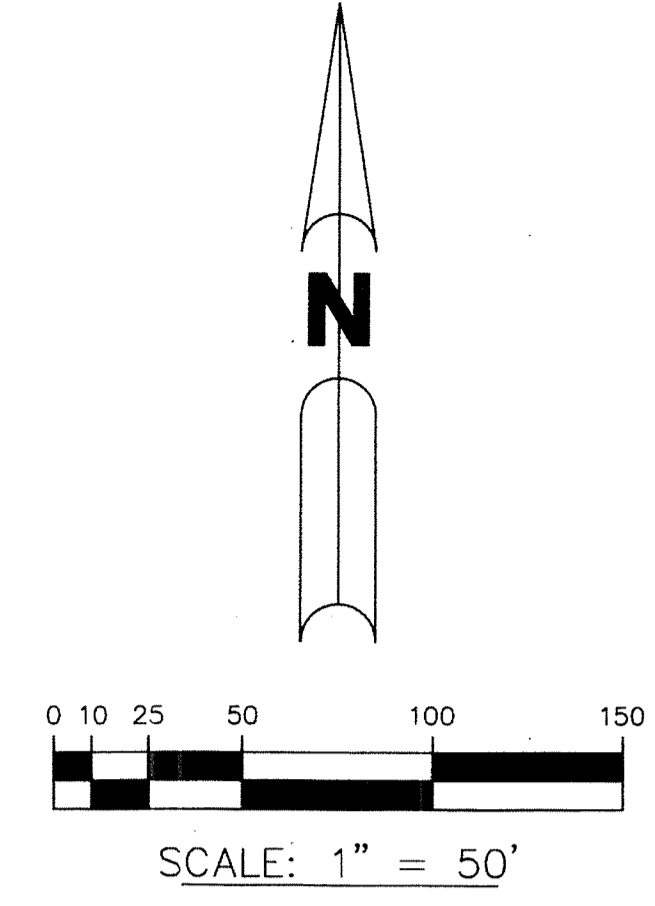


# GARDENIA ISLES

A PARCEL OF LAND LYING IN SECTION 13, TOWNSHIP 42 SOUTH, RANGE 42 EAST  
 CITY OF PALM BEACH GARDENS, PALM BEACH COUNTY, FLORIDA  
 OCTOBER 2013

142

STATE OF FLORIDA  
 COUNTY OF PALM BEACH  
 THIS PLAT WAS FILED FOR  
 RECORD AT \_\_\_\_\_ DAY  
 OF \_\_\_\_\_  
 2013 AND DULY RECORDED IN  
 PLAT BOOK \_\_\_\_\_ ON PAGES  
 \_\_\_\_\_ AND \_\_\_\_\_  
 SHARON R. BOCK,  
 CLERK & COMPTROLLER  
 BY: \_\_\_\_\_  
 DEPUTY CLERK



CURVE #	RADIUS	ARC DISTANCE	CENTRAL ANGLE	CHORD BEARING	CHORD DISTANCE
C-6	14.00'	43.98'	180°00'00"	N 88°26'34" W	28.00'
C-7	429.00'	18.04'	2°24'31"	S 87°14'18" E	18.03'
C-8	513.50'	5.39'	0°36'05"	S 86°43'52" E	5.39'
C-9	513.50'	73.87'	8°14'34"	S 82°18'33" E	73.81'
C-10	513.50'	79.26'	8°50'39"	N 82°36'35" W	79.18'
C-11	533.50'	36.11'	3°52'40"	N 80°19'16" W	36.10'
C-12	533.50'	41.51'	4°27'28"	N 84°29'20" W	41.50'
C-13	533.50'	77.62'	8°20'08"	N 82°33'00" W	77.55'
C-14	60.50'	35.35'	33°28'32"	N 40°51'11" W	34.85'
C-15	51.50'	45.58'	50°42'53"	N 30°49'21" W	44.11'
C-16	24.50'	24.77'	57°56'19"	N 27°12'38" W	23.73'
C-17	24.60'	16.43'	38°15'19"	S 20°53'24" W	16.12'
C-18	51.50'	34.57'	38°27'24"	S 20°47'08" W	33.92'
C-19	15.00'	0.05'	0°12'05"	N 88°20'36" W	0.05'
C-20	15.00'	23.56'	90°00'00"	N 43°14'29" W	21.21'
C-21	15.00'	23.51'	89°47'55"	S 46°39'29" W	21.18'
C-22	15.00'	23.61'	90°12'05"	S 43°20'31" E	21.25'
C-23	20.00'	10.59'	30°20'36"	N 76°23'08" E	10.47'
C-24	53.00'	9.99'	10°47'50"	N 66°36'45" E	9.97'
C-25	53.00'	65.18'	70°27'52"	S 72°45'23" E	61.15'
C-26	53.00'	29.13'	31°29'31"	S 21°46'42" E	28.77'
C-27	53.00'	20.15'	21°47'17"	S 4°51'43" W	20.03'
C-28	53.00'	80.27'	86°46'34"	S 59°08'38" W	72.82'
C-29	53.00'	48.24'	52°08'59"	N 51°23'35" W	46.59'
C-30	53.00'	252.96'	273°28'04"	N 17°56'52" E	72.65'
C-31	20.00'	22.03'	63°07'28"	N 56°52'50" W	20.94'
C-32	15.00'	23.51'	89°47'55"	S 46°39'29" W	21.18'

LINE #	BEARING	DISTANCE
L-1	N 1°33'26" E	25.42'
L-2	N 88°26'34" W	25.52'
L-3	N 1°33'26" E	45.42'
L-4	N 52°28'33" E	14.30'
L-5	S 88°26'34" E	3.67'
L-6	S 88°26'34" E	45.52'
L-7	S 88°26'34" E	51.50'
L-8	N 84°32'05" E	51.50'
L-9	S 88°26'34" E	0.05'
L-10	N 1°33'26" E	6.05'
L-11	N 1°33'26" E	20.00'
L-12	N 88°26'34" W	24.47'
L-13	N 88°26'34" W	14.00'
L-14	N 88°26'34" W	14.00'
L-15	N 88°26'34" W	37.50'
L-16	N 1°33'26" E	34.00'
L-17	N 1°33'26" E	24.00'
L-18	N 1°33'26" E	20.05'

**LEGEND:**  
 FD = FOUND  
 R = RADIUS  
 CA = CENTRAL ANGLE  
 A = ARC DISTANCE  
 U.E. = UTILITY EASEMENT  
 P.O.C. = POINT OF COMMENCEMENT  
 P.O.B. = POINT OF BEGINNING  
 TCE = TRAFFIC CONTROL EASEMENT  
 SUA = SEACOAST UTILITY AUTHORITY  
 ORB = OFFICIAL RECORD BOOK  
 P.R.M. = PERMANENT REFERENCE MONUMENT  
 P.C.P. = PERMANENT CONTROL POINT

"NOTICE: THIS PLAT, AS RECORDED IN ITS GRAPHIC FORM, IS THE OFFICIAL DEPICTION OF THE SUBDIVIDED LANDS DESCRIBED HEREIN AND WILL IN NO CIRCUMSTANCES BE SUPPLANTED IN AUTHORITY BY AND OTHER GRAPHIC OR DIGITAL FORM OF THE PLAT. THERE MAY BE ADDITIONAL RESTRICTIONS THAT ARE NOT RECORDED ON THIS PLAT THAT MAY BE FOUND IN THE PUBLIC RECORDS OF THIS COUNTY."  
 THE BEARINGS ARE BASED ON THE NORTH/SOUTH QUARTER SECTION LINE OF SECTION 13, TOWNSHIP 42 SOUTH, RANGE 42 EAST, PALM BEACH COUNTY, FLORIDA BEARING NORTH 1°45'31" EAST, ACCORDING TO THE NORTH AMERICAN DATUM OF 1983, AND READJUSTED IN 1990, AS COMPUTED ON THE FLORIDA STATE PLANE COORDINATE SYSTEM.  
 NO BUILDINGS, IMPROVEMENTS OF ANY KIND, TREES OR SHRUBS SHALL BE PLACED ON ANY EASEMENT WITHOUT PRIOR WRITTEN APPROVAL OF ALL EASEMENT BENEFICIARIES AND ALL APPLICABLE CITY OR COUNTY APPROVALS OR PERMITS AS REQUIRED FOR SUCH ENCROACHMENTS.

STATE PLANE COORDINATE DATA  
 COORDINATES SHOWN ARE GRID  
 LINEAR UNIT = US SURVEY FOOT  
 ZONE = FLORIDA EAST  
 ALL DISTANCES ARE GROUND  
 DATUM = NAD 83, 1990 ADJUSTED  
 SCALE FACTOR = 1.00004218  
 GROUND DISTANCE X SCALE FACTOR = GRID DISTANCE  
 1983 STATE PLANE TRAVERSE MERCATOR PROJECTION

THIS INSTRUMENT WAS PREPARED BY JAY ALAN BONNER, LS4088  
 IN THE OFFICE OF SUNSHINE SURVEYORS,  
 7592 159th COURT NORTH, PALM BEACH GARDENS, FLORIDA 33418

**SUNSHINE SURVEYORS**  
 PO Box 31224 (LB4725)  
 Palm Beach Gardens  
 Florida 33420-1224

SHEET  
 2 OF 2