

THIS INSTRUMENT PREPARED BY  
DAVID P. LINDLEY  
OF  
**CAULFIELD and WHEELER, INC.**  
SURVEYORS - ENGINEERS - PLANNERS  
7900 GLADES ROAD, SUITE 100  
BOCA RATON, FLORIDA 33434 - (561)392-1991  
APRIL - 2013

# VILLAGGIO ISLES PARCELS B AND C REPLAT

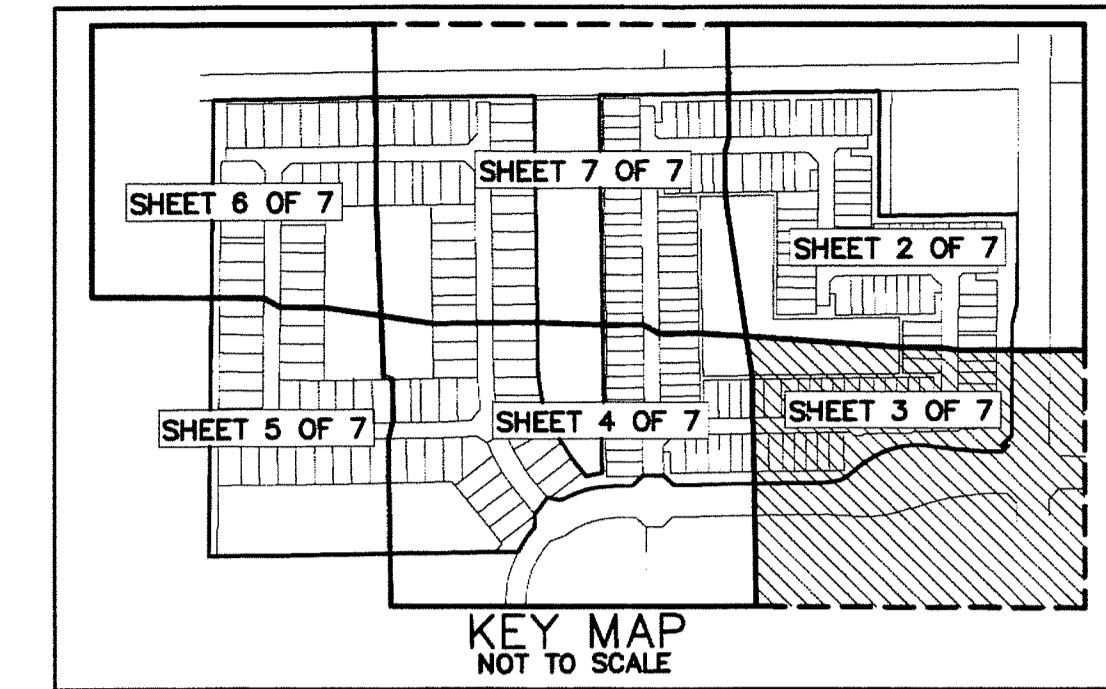
VILLAGGIO ISLES PUD, A PLANNED UNIT DEVELOPMENT  
BEING A REPLAT OF PARCEL B AND PARCEL C, VILLAGGIO ISLES PUD REPLAT,  
AS RECORDED PLAT BOOK 117, PAGES 102 THROUGH 109 OF THE PUBLIC RECORDS OF PALM BEACH COUNTY, FLORIDA  
LYING IN SECTION 16 TOWNSHIP 46 SOUTH, RANGE 42 EAST, PALM BEACH COUNTY, FLORIDA

118

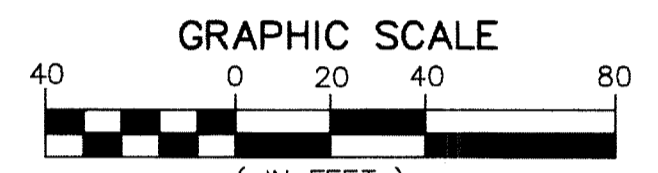
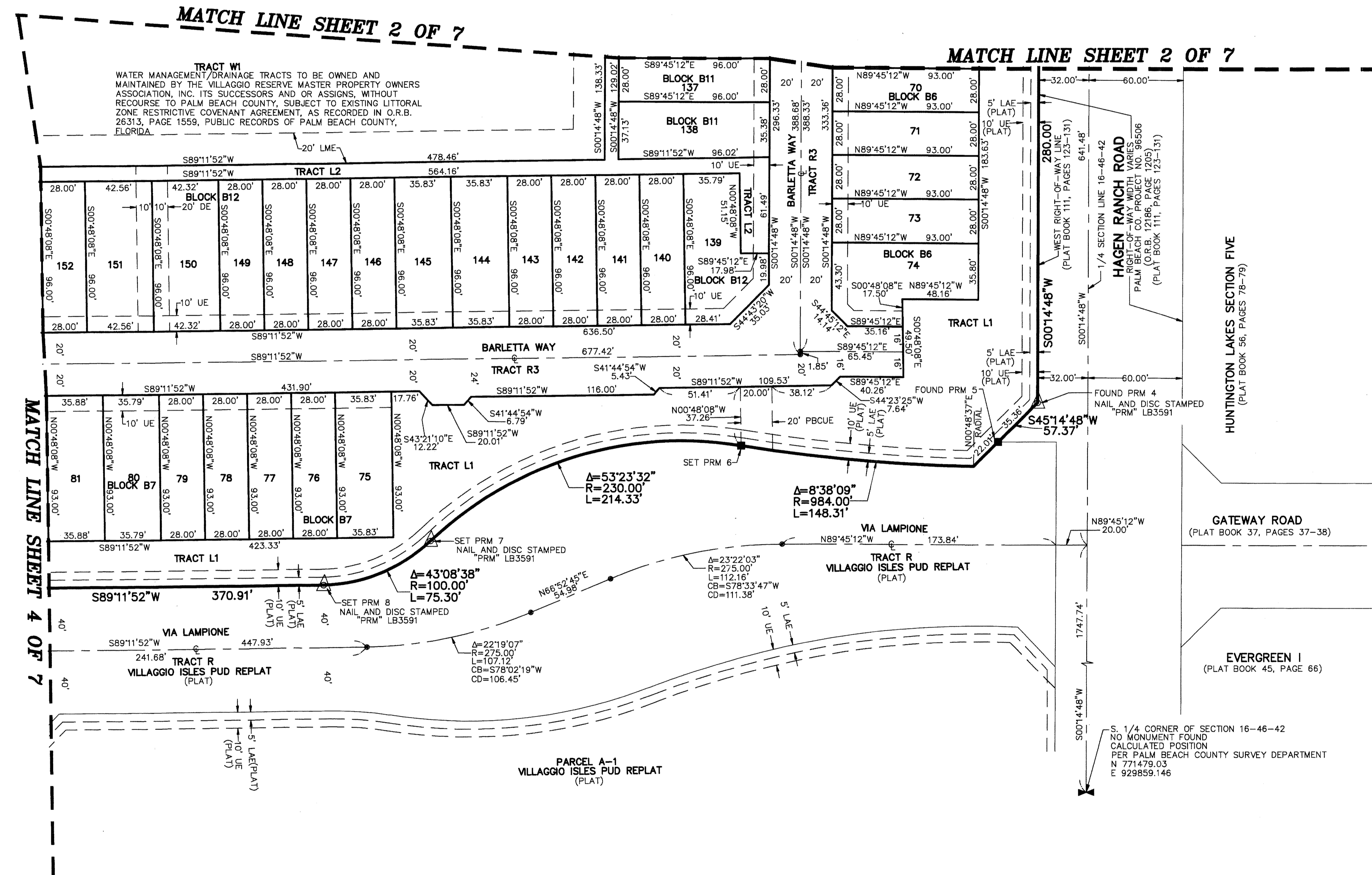
STATE OF FLORIDA  
COUNTY OF PALM BEACH  
THIS PLAT WAS FILED FOR  
RECORD AT \_\_\_\_\_ M.  
THIS \_\_\_\_\_ DAY OF \_\_\_\_\_  
A.D. 20\_\_\_\_ AND DULY RECORDED  
IN PLAT BOOK \_\_\_\_\_ ON  
PAGES \_\_\_\_\_ AND \_\_\_\_\_

SHARON R. BOCK  
CLERK AND COMPTROLLER

BY: \_\_\_\_\_  
DEPUTY CLERK



SHEET 3 OF 7



### LEGEND/ABBREVIATIONS

- ⊕ - CENTERLINE
- Δ - DELTA (CENTRAL ANGLE)
- AC - ACRES
- BDE - BUFFER DRAINAGE EASEMENT
- CB - CHORD BEARING
- CD - CHORD DISTANCE
- DE - DRAINAGE EASEMENT
- E - EASTING
- FPL - FLORIDA POWER & LIGHT CO.
- L - ARC LENGTH
- LAE - LIMITED ACCESS EASEMENT
- LB - LICENSED BUSINESS
- LMAE - LAKE MAINTENANCE ACCESS EASEMENT
- LME - LAKE MAINTENANCE EASEMENT
- LSE - LIFT STATION EASEMENT
- L.W.D.D. - LAKE WORTH DRAINAGE DISTRICT
- N - NORTHING
- OHME - OVERHANG/MAINTENANCE EASEMENT
- O.R.B. - OFFICIAL RECORD BOOK
- PBCUE - PALM BEACH COUNTY UTILITY EASEMENT
- (PLAT) - INDICATES INDICATES PLAT BOOK 117, PAGE 102.
- R - RADIUS
- (R) - INDICATES RADIAL LINE
- SF - SQUARE FEET
- UE - UTILITY EASEMENT
- ▲ - INDICATES "ZERO" SIDE OF LOT LINE
- - DENOTES PERMANENT REFERENCE MONUMENT
- - DENOTES PERMANENT CONTROL POINT
- - DENOTES PERMANENT CONTROL POINT
- ▲ - DENOTES PERMANENT REFERENCE MONUMENT SET NAIL AND DISC STAMPED "PRM" LB 3591

### NOTES

**COORDINATES, BEARINGS AND DISTANCES**  
 COORDINATES SHOWN ARE GRID  
 DATUM = NAD 83 1990 ADJUSTMENT  
 ZONE = FLORIDA EAST  
 LINEAR UNIT = US SURVEY FEET  
 COORDINATE SYSTEM 1983 STATE PLANE  
 TRANSVERSE MERCATOR PROJECTION  
 ALL DISTANCES ARE GROUND  
 SCALE FACTOR = 1.000265  
 GROUND DISTANCE X SCALE FACTOR = GRID DISTANCE  
 BEARINGS AS SHOWN HEREON ARE GRID DATUM,  
 NAD 83 1990 ADJUSTMENT, FLORIDA EAST ZONE.

### COORDINATE TABLE

MONUMENT	NORTHING (N)	EASTING (E)
FOUND PRM 1	773885.05	929849.43
FOUND PRM 2	773547.90	929848.49
FOUND PRM 3	773597.95	929836.27
FOUND PRM 4	773317.94	929835.07
FOUND PRM 5	773293.04	929809.96
SET PRM 6	773290.79	929844.74
SET PRM 7	773229.51	929449.38
SET PRM 8	773201.52	929381.38
SET PRM 9	773196.33	929010.49
SET PRM 10	773220.97	928985.14
SET PRM 11	773220.27	928935.15
SET PRM 12	773194.93	928910.50
SET PRM 13	773194.34	928668.46
SET PRM 14	773158.34	928702.54
SET PRM 15	773164.88	928703.73
SET PRM 16	773122.16	928670.60
SET PRM 17	773089.80	928669.45
SET PRM 18	773028.12	928627.44
SET PRM 19	773020.95	927874.67
FOUND PRM 20	774148.84	927886.10
SET PRM 21	774159.80	928669.35
SET PRM 22	773464.85	928679.08
SET PRM 23	773416.66	928686.82
SET PRM 24	773321.46	928723.14
SET PRM 25	773263.84	928760.04
SET PRM 26	773217.80	928796.41
SET PRM 27	773226.86	928835.04
SET PRM 28	773338.71	928833.48
SET PRM 29	773345.03	928839.78
SET PRM 30	774162.03	928828.34
FOUND PRM 31	774171.61	929512.53
FOUND PRM 32	773863.87	929511.20