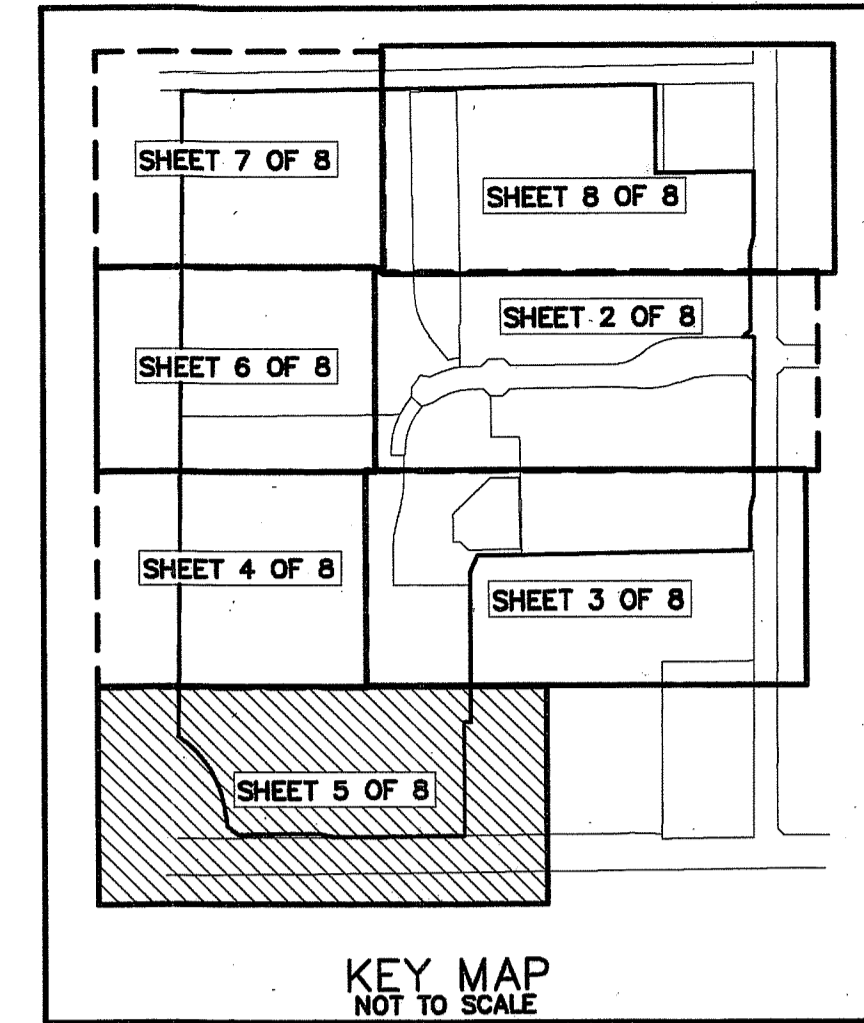


THIS INSTRUMENT PREPARED BY  
DAVID P. LINDLEY  
OF  
**CAULFIELD and WHEELER, INC.**  
SURVEYORS - ENGINEERS - PLANNERS  
7900 GLADES ROAD, SUITE 100  
BOCA RATON, FLORIDA 33434 - (561)392-1991  
JUNE - 2013

# VILLAGGIO ISLES PUD REPLAT

VILLAGGIO ISLES PUD, A PLANNED UNIT DEVELOPMENT  
BEING A REPLAT OF PARCEL A, TRACT L, TRACT R AND TRACT W, VILLAGGIO ISLES-PHASE I  
AS RECORDED PLAT BOOK 111, PAGES 123 THROUGH 131 OF THE PUBLIC RECORDS OF PALM BEACH COUNTY, FLORIDA  
LYING IN SECTION 16 TOWNSHIP 46 SOUTH, RANGE 42 EAST, PALM BEACH COUNTY, FLORIDA



106

STATE OF FLORIDA  
COUNTY OF PALM BEACH  
THIS PLAT WAS FILED FOR  
RECORD AT \_\_\_\_\_ M.  
THIS \_\_\_\_\_ DAY OF \_\_\_\_\_  
A.D. 20\_\_\_\_ AND DULY RECORDED  
IN PLAT BOOK \_\_\_\_\_ ON  
PAGES \_\_\_\_\_ AND \_\_\_\_\_

SHARON R. BOCK  
CLERK AND COMPTROLLER

BY: \_\_\_\_\_  
DEPUTY CLERK

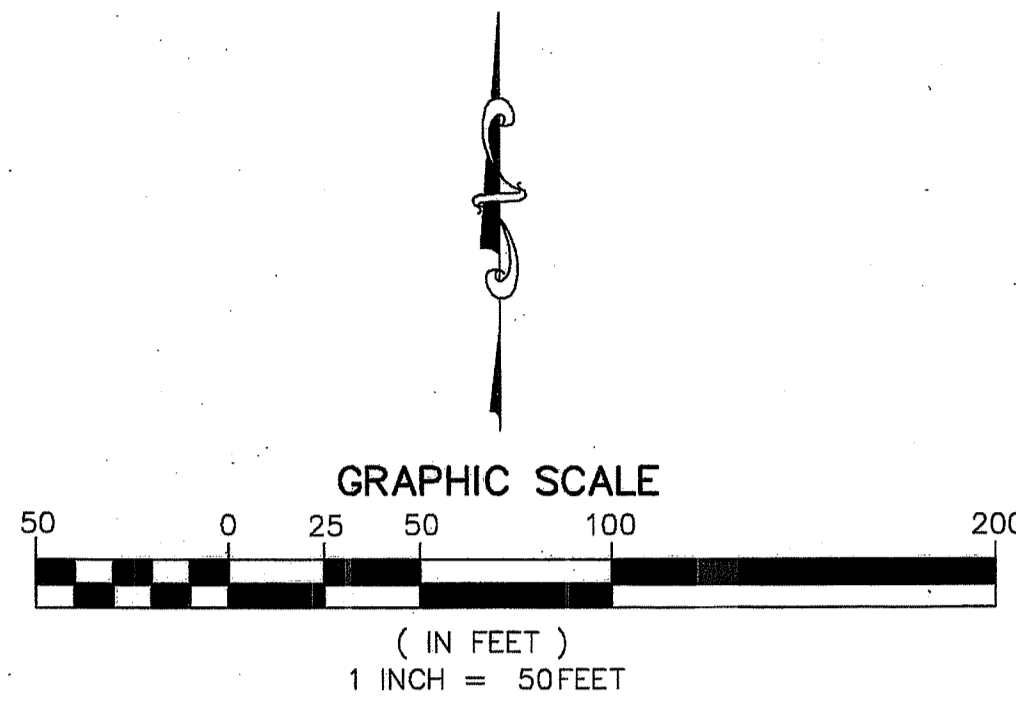
**SHEET 5 OF 8**

### LEGEND/ABBREVIATIONS

- CENTERLINE
- Δ - DELTA (CENTRAL ANGLE)
- AC - ACRES
- CB - CHORD BEARING
- CD - CHORD DISTANCE
- DE - DRAINAGE EASEMENT
- FPL - FLORIDA POWER & LIGHT CO.
- L - ARC LENGTH
- LAE - LIMITED ACCESS EASEMENT
- LB - LICENSED BUSINESS
- LMAE - LAKE MAINTENANCE ACCESS EASEMENT
- LME - LAKE MAINTENANCE EASEMENT
- LSE - LIFT STATION EASEMENT
- L.W.D. - LAKE WORTH DRAINAGE DISTRICT
- O.R.B. - OFFICIAL RECORD BOOK
- PBCUE - PALM BEACH COUNTY UTILITY EASEMENT
- R - RADIUS
- (R) - INDICATES RADIAL LINE
- SF - SQUARE FEET
- UE - UTILITY EASEMENT
- - DENOTES PERMANENT REFERENCE MONUMENT  
4" x 4" x 24" CONCRETE MONUMENT STAMPED LB3591
- - DENOTES PERMANENT CONTROL POINT  
NAIL AND METAL DISK STAMPED LB3591
- ▲ - DENOTES PERMANENT REFERENCE MONUMENT SET NAIL AND DISC  
STAMPED "PRM" LB 3591

### NOTES

- COORDINATES, BEARINGS AND DISTANCES**
- COORDINATES SHOWN ARE GRID
- DATUM = NAD 83 1990 ADJUSTMENT
- ZONE = FLORIDA EAST
- LINEAR UNIT = US SURVEY FEET
- COORDINATE SYSTEM 1983 STATE PLANE
- TRANSVERSE MERCATOR PROJECTION
- ALL DISTANCES ARE GROUND
- SCALE FACTOR = 1.0000265
- GROUND DISTANCE X SCALE FACTOR = GRID DISTANCE
- BEARINGS AS SHOWN HEREON ARE GRID DATUM,  
NAD 83 1990 ADJUSTMENT, FLORIDA EAST ZONE.



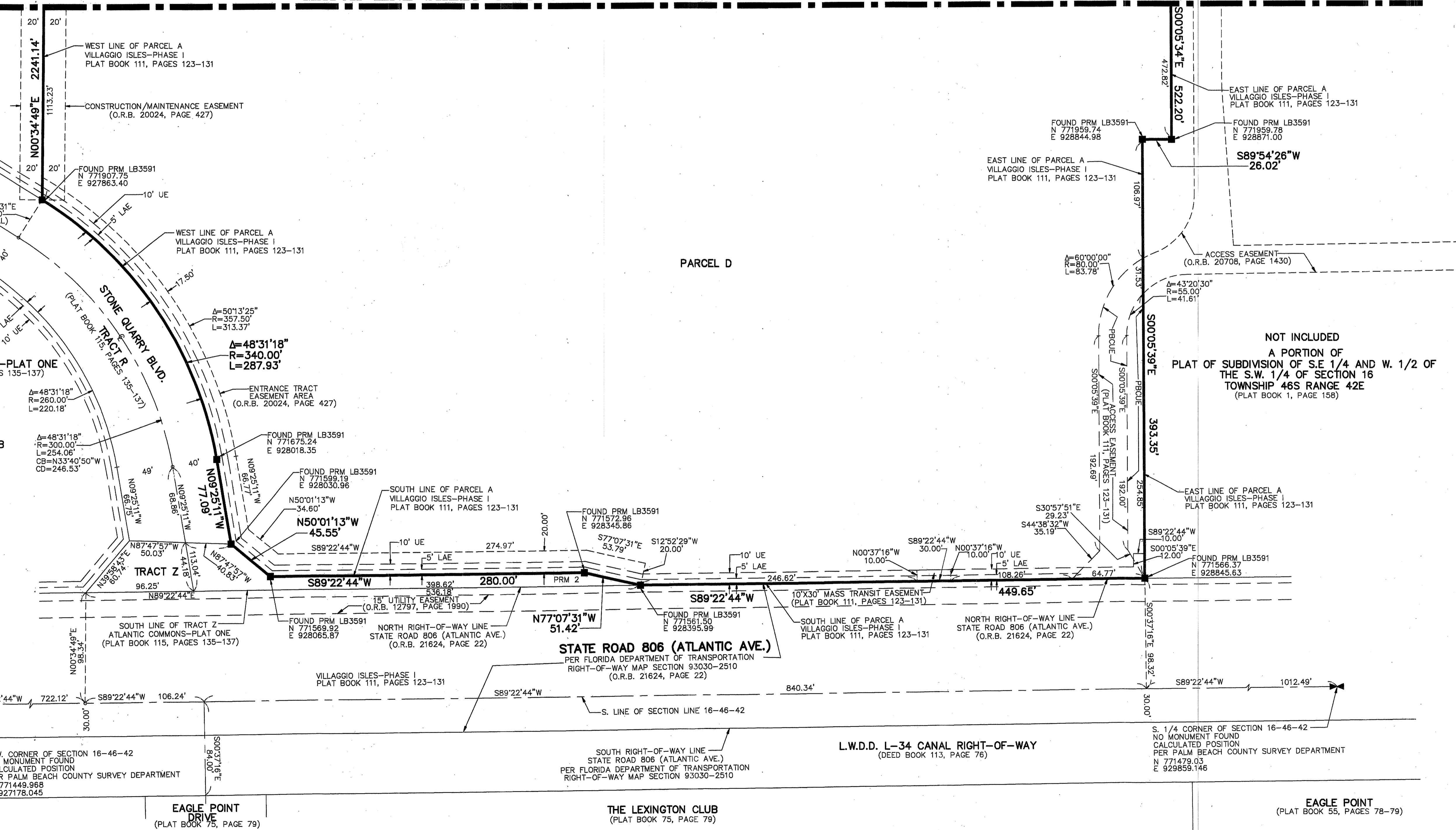
MATCH LINE SHEET 4 OF 8

MATCH LINE SHEET 3 OF 8

ATLANTIC COMMONS-PLAT ONE  
(PLAT BOOK 115, PAGES 135-137)

ATLANTIC COMMONS-PLAT ONE  
(PLAT BOOK 115, PAGES 135-137)

TRACT B



NOT INCLUDED  
A PORTION OF  
PLAT OF SUBDIVISION OF S.E. 1/4 AND W. 1/2 OF  
THE S.W. 1/4 OF SECTION 16  
TOWNSHIP 46S RANGE 42E  
(PLAT BOOK 1, PAGE 158)

S.W. CORNER OF SECTION 16-46-42  
NO MONUMENT FOUND  
CALCULATED POSITION  
PER PALM BEACH COUNTY SURVEY DEPARTMENT  
N 771449.968  
E 927178.045

EAGLE POINT  
DRIVE  
(PLAT BOOK 75, PAGE 79)

SOUTH RIGHT-OF-WAY LINE  
STATE ROAD 806 (ATLANTIC AVE.)  
PER FLORIDA DEPARTMENT OF TRANSPORTATION  
RIGHT-OF-WAY MAP SECTION 93030-2510

THE LEXINGTON CLUB  
(PLAT BOOK 75, PAGE 79)

L.W.D. L-34 CANAL RIGHT-OF-WAY  
(DEED BOOK 113, PAGE 76)

S. 1/4 CORNER OF SECTION 16-46-42  
NO MONUMENT FOUND  
CALCULATED POSITION  
PER PALM BEACH COUNTY SURVEY DEPARTMENT  
N 771479.03  
E 929859.146

EAGLE POINT  
(PLAT BOOK 55, PAGES 78-79)