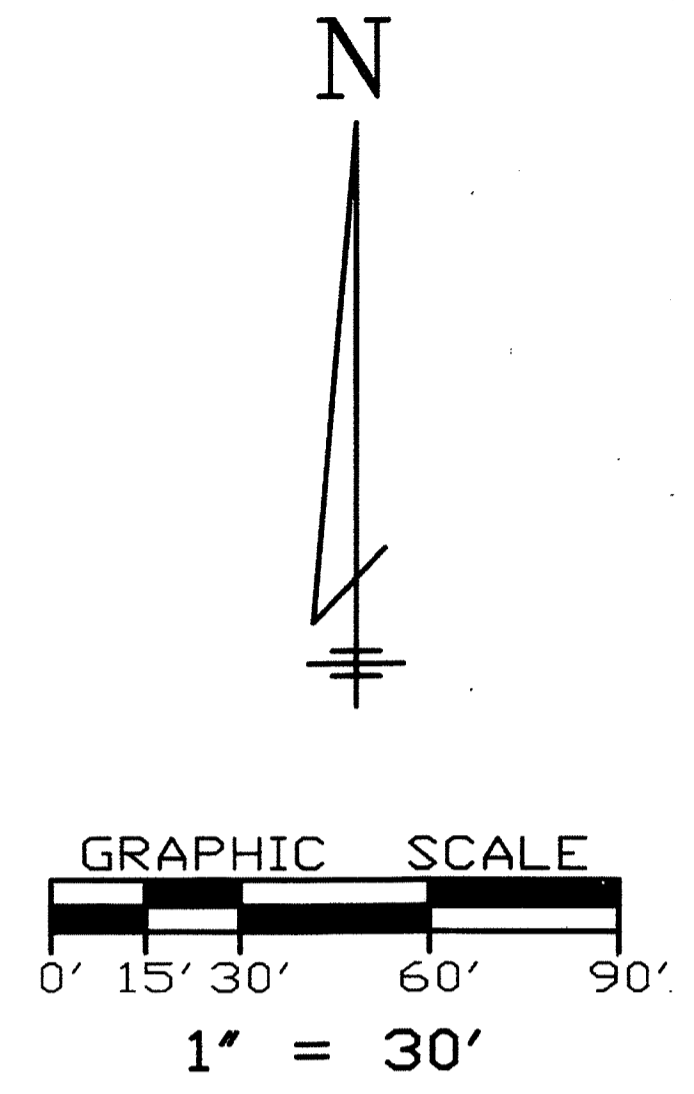
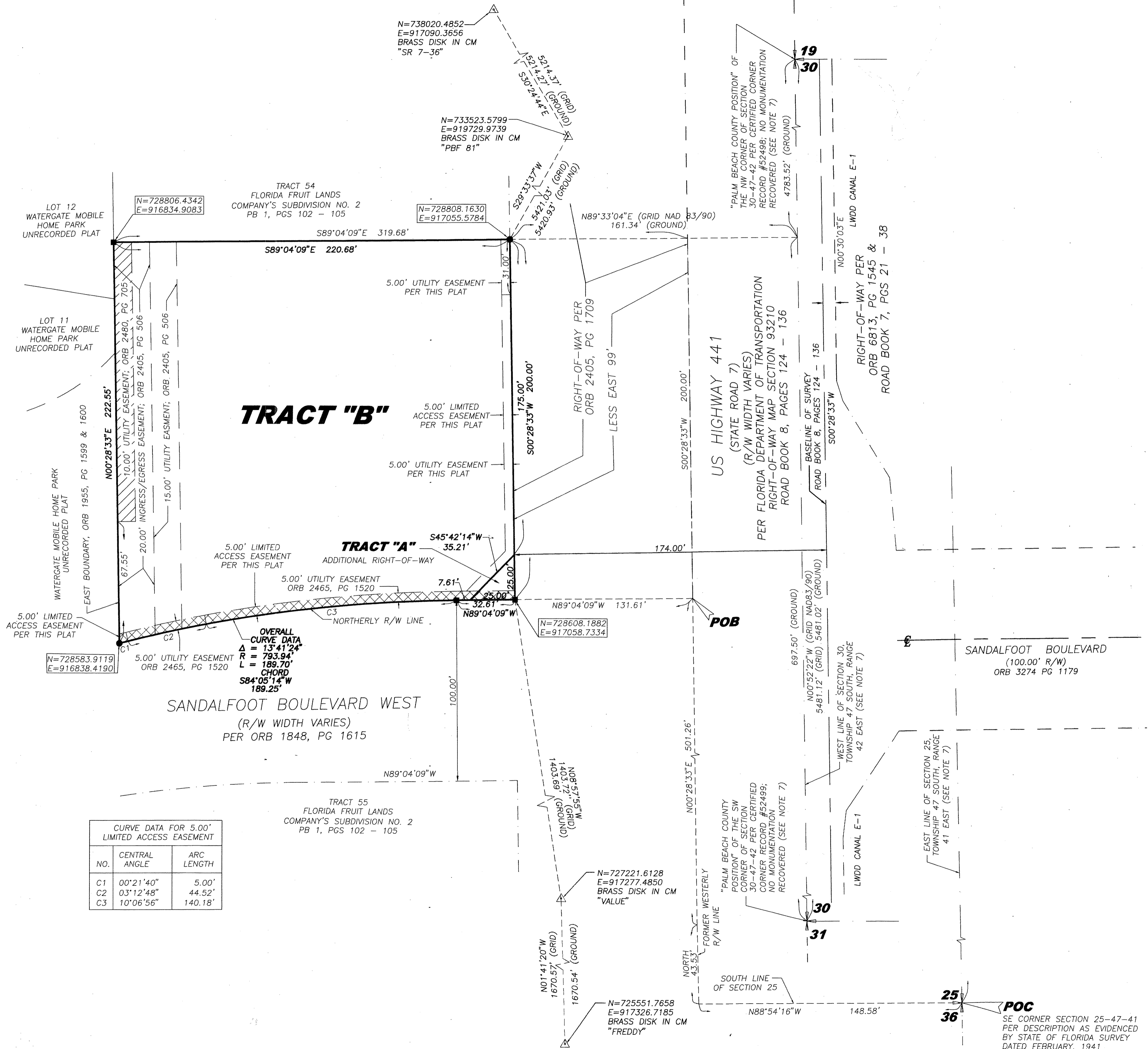


CUMBERLAND FARMS

A REPLAT OF A PORTION OF TRACTS 54 AND 55, LYING IN SECTION 25, TOWNSHIP 47 SOUTH, RANGE 41 EAST IN THE PLAT OF FLORIDA FRUIT LANDS COMPANY'S SUBDIVISION PLAT NO. 2, AS RECORDED IN PLAT BOOK 1, PAGES 102, PUBLIC RECORDS OF PALM BEACH COUNTY, FLORIDA



SHEET 2 OF 2



- ABBREVIATIONS**
- CL - CENTERLINE SYMBOL
 - Δ - CENTRAL ANGLE
 - CM - CONCRETE MONUMENT
 - FDOT - FLORIDA DEPARTMENT OF TRANSPORTATION
 - IP - IRON PIPE
 - IR - IRON ROD
 - L - ARC LENGTH
 - LB - LICENSED BUSINESS
 - LS - LICENSED SURVEYOR
 - LWDD - LAKE WORTH DRAINAGE DISTRICT
 - N&D - NAIL & DISK
 - NTS - NOT TO SCALE
 - ORB - OFFICIAL RECORDS BOOK
 - PB - PLAT BOOK
 - PG - PAGE(S)
 - POB - POINT OF BEGINNING
 - POC - POINT OF COMMENCEMENT
 - PRM - PERMANENT REFERENCE MONUMENT
 - R - CURVE RADIUS
 - R/W - RIGHT OF WAY
 - UE - UTILITY EASEMENT
 - N 000000.0000 - DENOTES STATE PLANE COORDINATES (GRID)
 - E 000000.0000 - 5.00' UTILITY EASEMENT PER ORB 2465, PG 1520

CURVE DATA FOR 5.00' LIMITED ACCESS EASEMENT

NO.	CENTRAL ANGLE	ARC LENGTH
C1	00°21'40"	5.00'
C2	03°12'48"	44.52'
C3	10°06'56"	140.18'

THIS INSTRUMENT WAS PREPARED BY: JAMES D. BRAY, PSM 6507

ACCURIGHT SURVEYS
of Orlando Inc., LB 4475
2012 E. Robinson St.
Orlando, Florida 32803
PHONE (407) 894-6314 FAX (407) 897-3777

POC
SE CORNER SECTION 25-47-41 PER DESCRIPTION AS EVIDENCED BY STATE OF FLORIDA SURVEY DATED FEBRUARY, 1941 SEE PLAT OF WATERGATE PLAT BOOK 29, PAGE 29 NO MONUMENTATION RECOVERED (SEE NOTE 7)