

# DELRAY PLACE

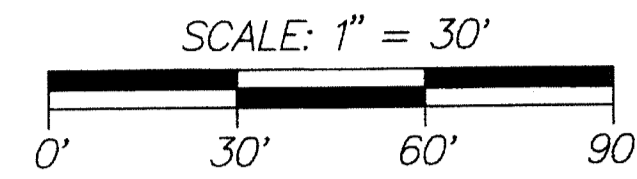
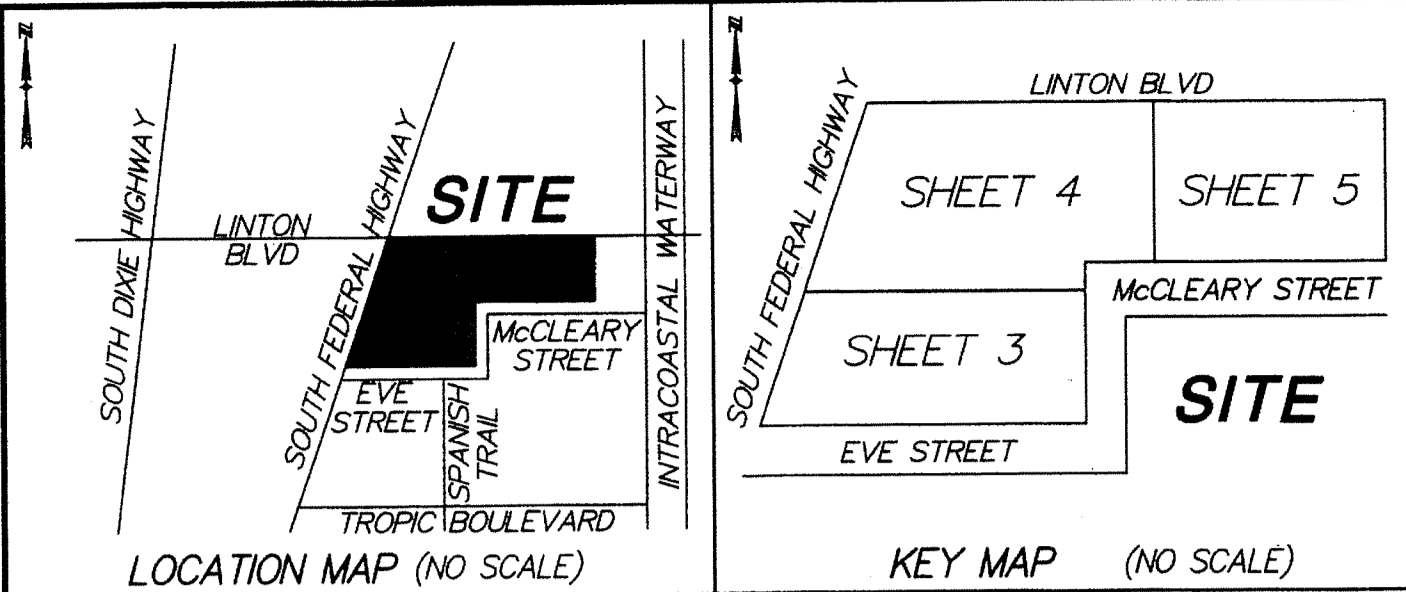
BEING A REPLAT OF A PORTION OF OLD HARBOR OFFICE AND BANK FACILITY, ACCORDING TO THE PLAT THEREOF AS RECORDED IN PLAT BOOK 42, PAGE 61 (P.R.P.B.CO.) AND ALL OF OLD HARBOR OFFICE AND BANK FACILITY II, ACCORDING TO THE PLAT THEREOF AS RECORDED IN PLAT BOOK 42, PAGE 62 (P.R.P.B.CO.) BEING IN SECTION 28, TOWNSHIP 46 SOUTH, RANGE 43 EAST, CITY OF DELRAY BEACH, PALM BEACH COUNTY, FLORIDA

MAY 2013  
SHEET 5 OF 5

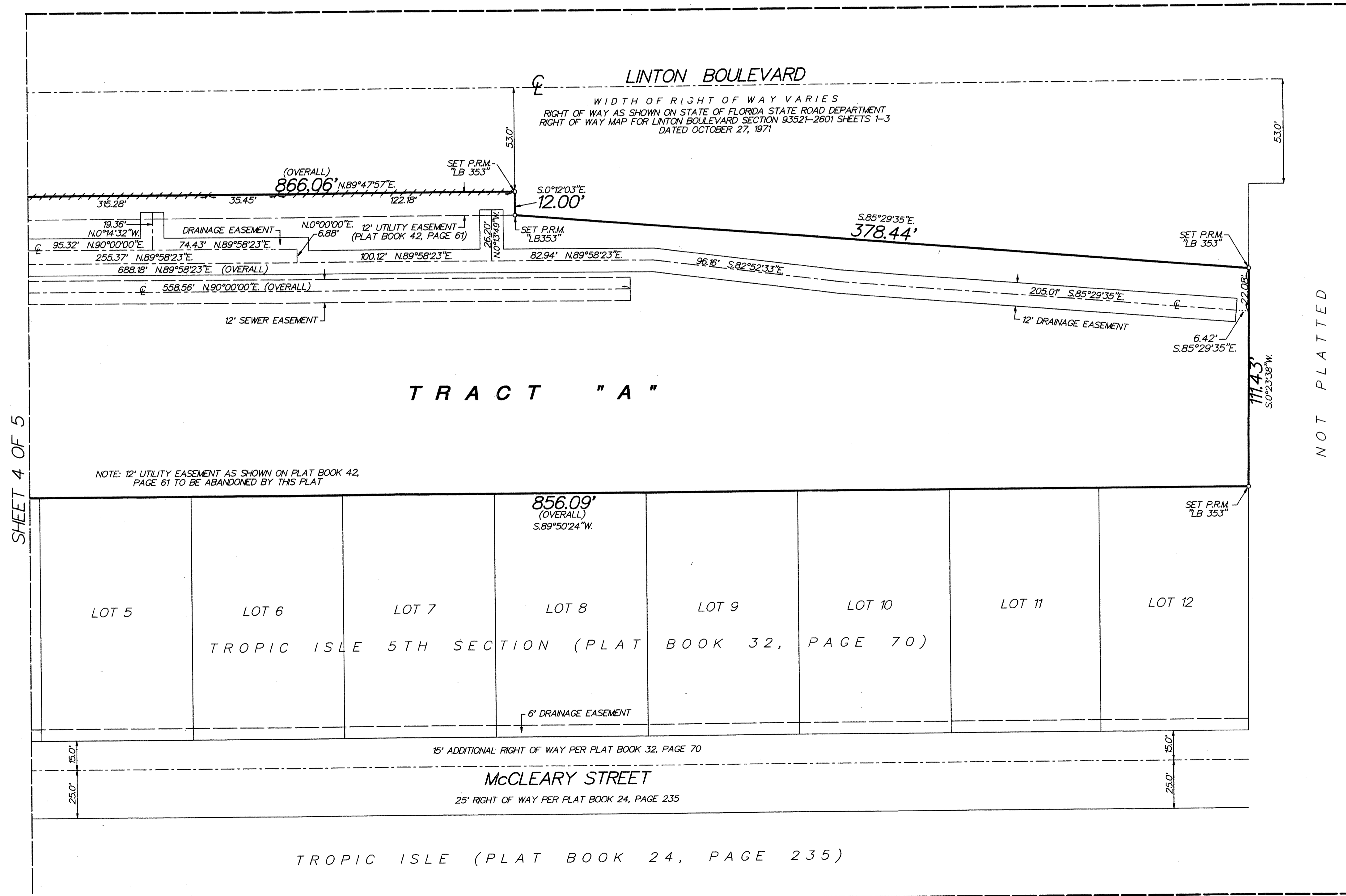
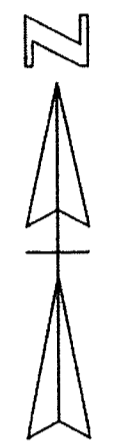
THIS INSTRUMENT WAS PREPARED BY PAUL D. ENGLE, IN THE OFFICE OF O'BRIEN, SUTER & O'BRIEN, INC., 955 N.W. 17TH AVENUE, SUITE K1, DELRAY BEACH, FLORIDA 33445 (561) 276-4501

COUNTY OF PALM BEACH  
STATE OF FLORIDA

THIS PLAT WAS FILED FOR RECORD AT \_\_\_\_\_  
THIS \_\_\_\_\_ DAY OF \_\_\_\_\_  
20\_\_\_\_, AND DULY RECORDED IN PLAT BOOK NO. \_\_\_\_\_  
ON PAGE \_\_\_\_\_  
SHARON R. BOCK, CLERK AND COMPTROLLER  
BY \_\_\_\_\_ DC



- LEGEND:
- CL = CENTERLINE
  - C.A. = CENTRAL ANGLE
  - O.R.B. = OFFICIAL RECORDS BOOK
  - PRM = PERMANENT REFERENCE MONUMENT (4"x4" CONCRETE MONUMENT STAMPED "PRM LB 353")
  - D.E. = DRAINAGE EASEMENT
  - P.R.P.B.CO. = PUBLIC RECORDS OF PALM BEACH COUNTY



C:\msdms\p256981\LD000046.dwg - 08/27/2013 - 01:14 PM - Sheet 1 of 5