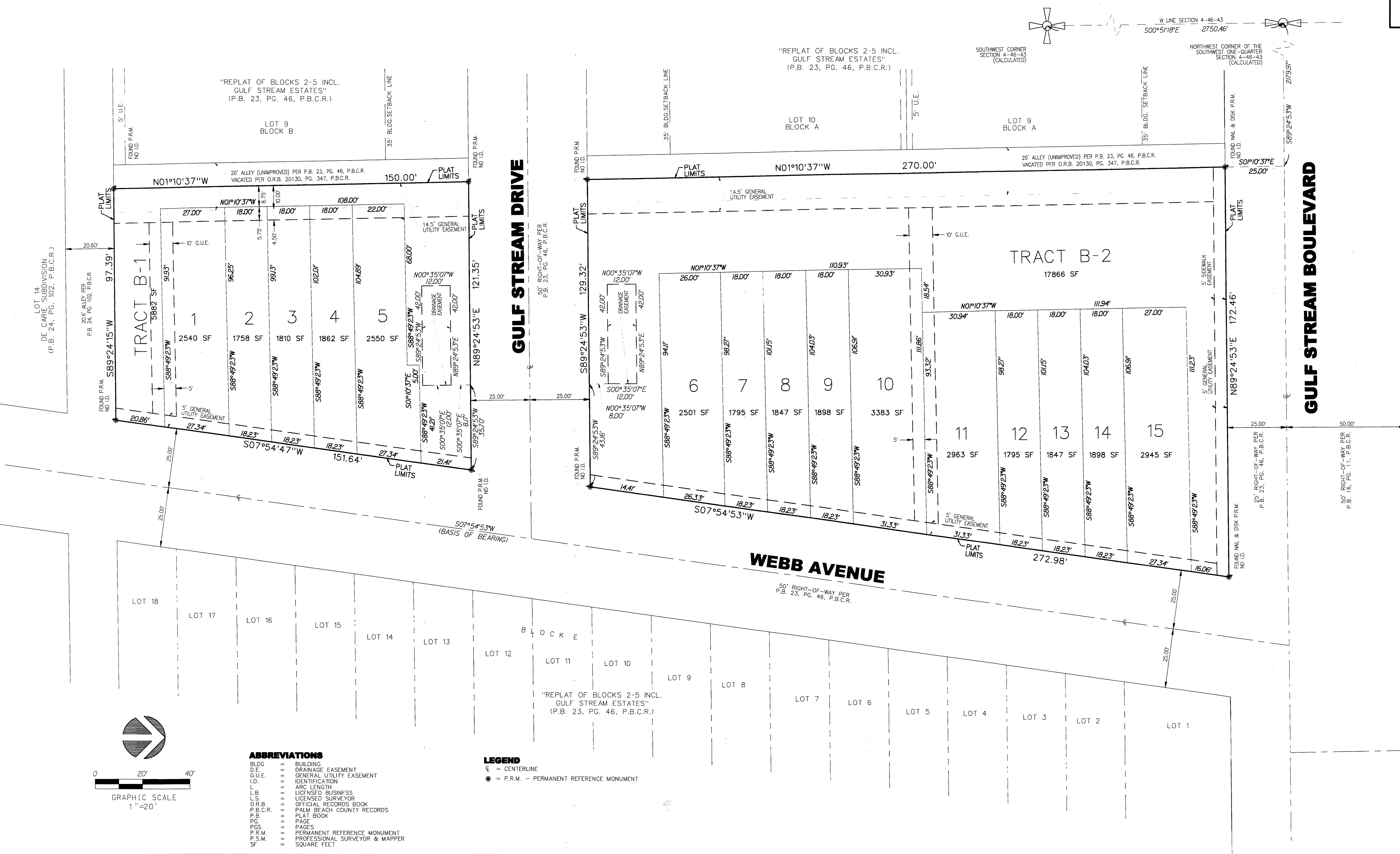


**PERIMETER**  
**SURVEYING & MAPPING**  
 Prepared by: Jeff S. Hodapp, P.S.M.  
 Certificate of Authorization No. LB7264  
 949A Clint Moore Road  
 Boca Raton, Florida 33487  
 Tel: (561) 241-9988  
 Fax: (561) 241-5182

# GULFSTREAM VILLAS AT HERITAGE LANDINGS

**A REPLAT OF ALL OF LOTS 101, 102, 103, 104, 201, 202, 203, 204, 205, 301, 302, 303, 304, 305, AND TRACTS A AND B, "GULF STREAM VILLAS", (P.B. 107, PGS. 117-118, P.B.C.R.), SECTION 4, TOWNSHIP 46 SOUTH, RANGE 43 EAST, CITY OF DELRAY BEACH, PALM BEACH COUNTY, FLORIDA**  
**MAY, 2013**



- ABBREVIATIONS**
- BLDG = BUILDING
  - D.E. = DRAINAGE EASEMENT
  - G.U.E. = GENERAL UTILITY EASEMENT
  - I.D. = IDENTIFICATION
  - L = ARC LENGTH
  - LB = LICENSED BUSINESS
  - L.S. = LICENSED SURVEYOR
  - O.R.B. = OFFICIAL RECORDS BOOK
  - P.B.C.R. = PALM BEACH COUNTY RECORDS
  - P.B. = PLAT BOOK
  - PG. = PAGE
  - PGS. = PAGES
  - P.R.M. = PERMANENT REFERENCE MONUMENT
  - P.S.M. = PROFESSIONAL SURVEYOR & MAPPER
  - SF = SQUARE FEET

- LEGEND**
- ⊕ = CENTERLINE
  - = P.R.M. - PERMANENT REFERENCE MONUMENT

ESTATES AT HERITAGE CLUB, PUD REPLAT NO. 11