

THIS INSTRUMENT PREPARED BY
 DAVID P. LINDLEY
 OF
CAULFIELD and WHEELER, INC.
 SURVEYORS - ENGINEERS - PLANNERS
 7900 GLADES ROAD, SUITE 100
 BOCA RATON, FLORIDA 33434 - (561)392-1991
 CERTIFICATE OF AUTHORIZATION NO. LB3591
 NOVEMBER - 2012

EVERNIA PLACE

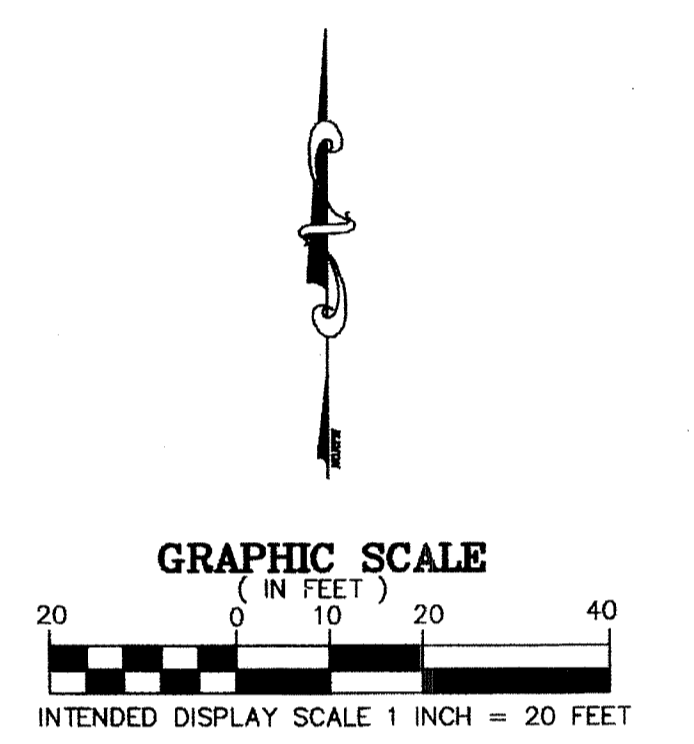
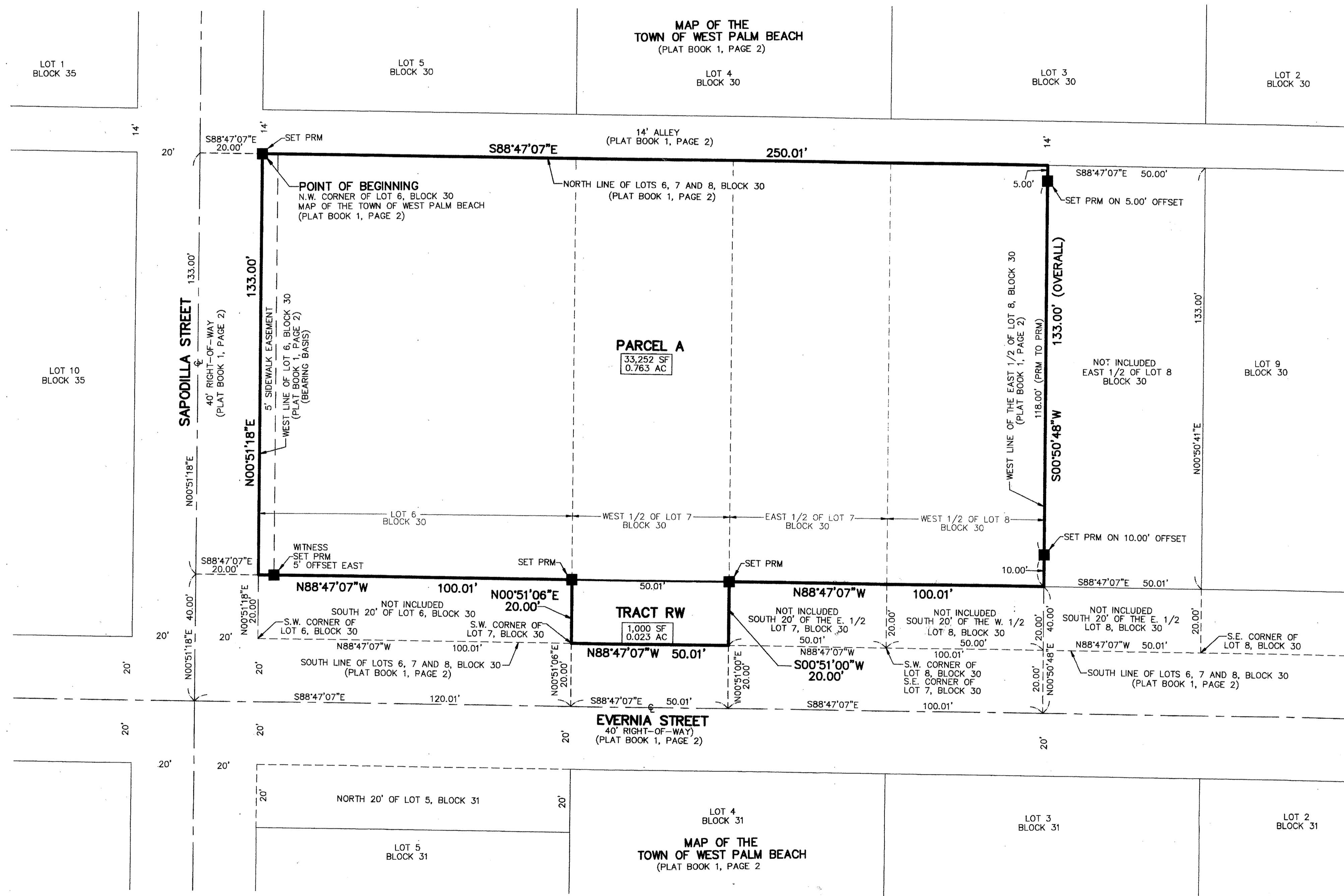
BEING A REPLAT OF A PORTION OF LOTS 6, 7 AND 8, BLOCK 30, MAP OF THE TOWN OF WEST PALM BEACH,
 AS RECORDED IN PLAT BOOK 1, PAGE 2 OF THE PUBLIC RECORDS OF PALM BEACH COUNTY, FLORIDA,
 LYING IN SECTION 21, TOWNSHIP 43 SOUTH, RANGE 43 EAST, CITY OF WEST PALM BEACH, PALM BEACH COUNTY, FLORIDA

10

STATE OF FLORIDA
 COUNTY OF PALM BEACH
 THIS PLAT WAS FILED FOR
 RECORD AT _____ M.
 THIS _____ DAY OF _____
 A.D. 201____ AND DULY RECORDED
 IN PLAT BOOK _____ ON
 PAGES _____ AND _____
 SHARON R. BOCK
 CLERK AND COMPTROLLER

BY: _____
 DEPUTY CLERK

SHEET 2 OF 2



LEGEND ABBREVIATIONS
 ■ PRM - PERMANENT REFERENCE MONUMENT
 4"x4" CONCRETE MONUMENT WITH
 ALUMINUM DISK STAMPED PRM LB 3591
 ⊕ - CENTERLINE
 AC - ACRES
 LB - LICENSED BUSINESS
 O.R.B. - OFFICIAL RECORD BOOK
 SF - SQUARE FEET