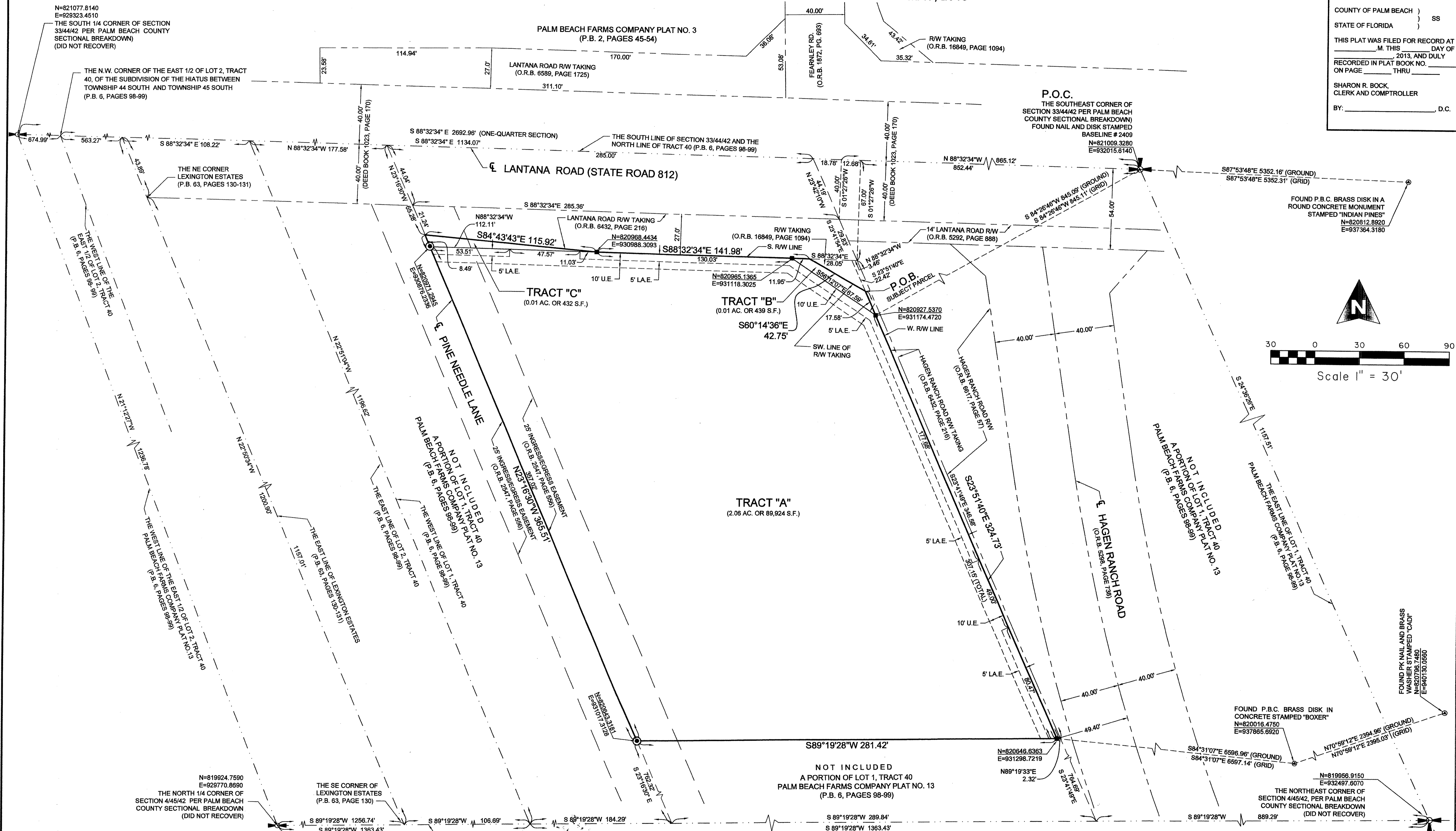
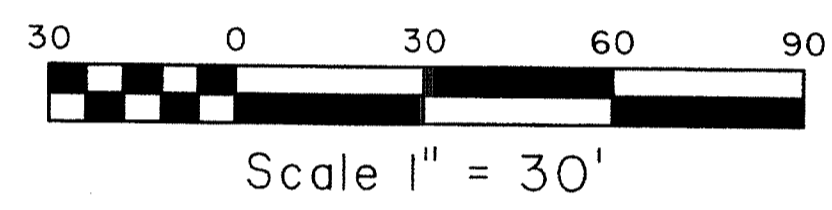


STUNKEL MEDICAL OFFICE

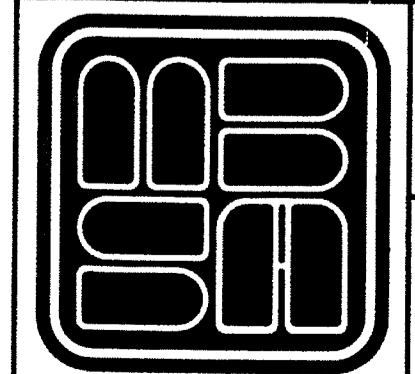
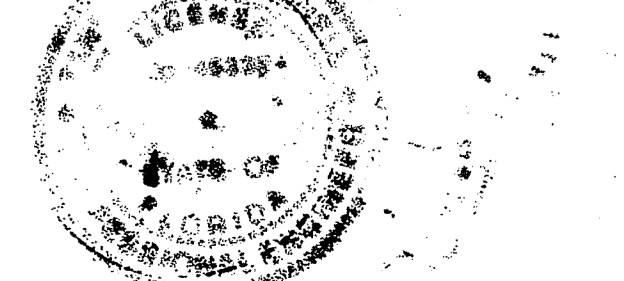
LYING BETWEEN TOWNSHIP 44 SOUTH, AND TOWNSHIP 45 SOUTH, RANGE 42 EAST, PALM BEACH COUNTY, FLORIDA,
BEING A RE-PLAT OF A PORTION OF LOT 1, TRACT 40 OF THE HIATUS, PALM BEACH FARMS COMPANY PLAT NO. 13 AS
RECORDED IN PLAT BOOK 6, PAGES 98 AND 99, PUBLIC RECORDS OF PALM BEACH COUNTY, FLORIDA,
SHEET 2 OF 2
MAY, 2013

8

COUNTY OF PALM BEACH)
STATE OF FLORIDA) SS
THIS PLAT WAS FILED FOR RECORD AT)
M. THIS) DAY OF)
2013, AND DULY)
RECORDED IN PLAT BOOK NO.)
ON PAGE) THRU)
SHARON R. BOCK,
CLERK AND COMPTROLLER
BY: _____, D.C.



COORDINATE NOTE:
STATE PLANE COORDINATES SHOWN ARE GRID DATUM,
NAD 83 1990 ADJUSTMENT, FLORIDA EAST ZONE, COORDINATE
SYSTEM 1983 STATE PLANE, TRANSVERSE MERCATOR PROJECTION
LINEAR UNIT = US SURVEY FEET
ALL DISTANCES ARE GROUND
SCALE FACTOR = 1.0000278
GROUND DISTANCE X SCALE FACTOR = GRID DISTANCE
BEARINGS AS SHOWN HEREON ARE GRID DATUM, NAD 83 1990
ADJUSTMENT, FLORIDA EAST ZONE.



MICHAEL B. SCHORAH & ASSOCIATES, INC.
1850 FOREST HILL BLVD., SUITE 205
WEST PALM BEACH, FLORIDA 33406
EB# 2438 TEL. (561) 968-0080 FAX. (561) 642-9726 LB# 2438

STUNKEL MEDICAL OFFICE