

# OCEAN APPLE ESTATES PLAT THREE

BEING A REPLAT OF LOT 2, OCEAN APPLE ESTATES, PLAT BOOK 65, PAGE 100 (P.B.C.P.R.)  
 BEING IN SECTION 9, TOWNSHIP 46 SOUTH, RANGE 43 EAST, CITY OF DELRAY BEACH, PALM  
 BEACH COUNTY, FLORIDA.

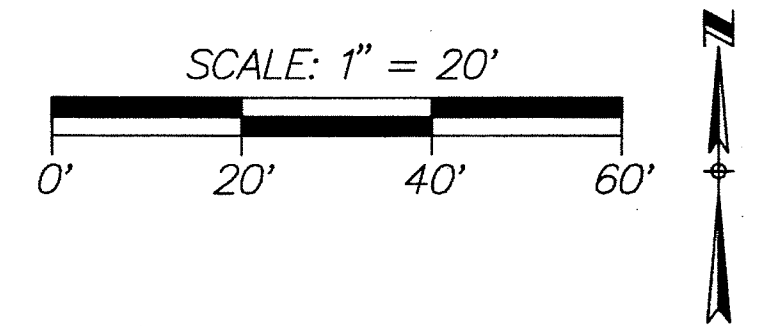
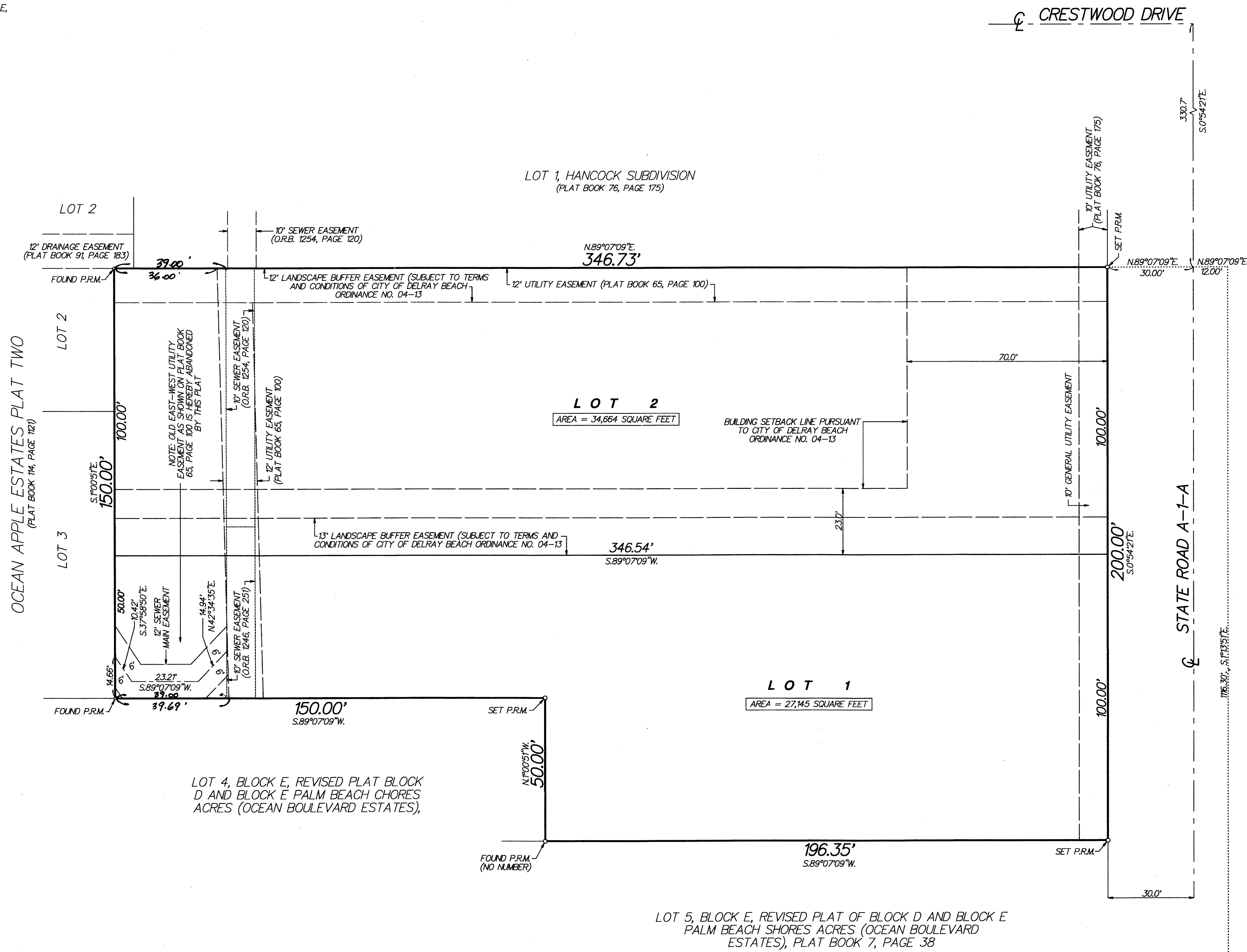
FEBRUARY 2013  
 SHEET 1 OF 2

119

COUNTY OF PALM BEACH  
 STATE OF FLORIDA

THIS PLAT WAS FILED FOR RECORD AT \_\_\_\_\_  
 THIS \_\_\_\_\_ DAY OF \_\_\_\_\_  
 20\_\_\_\_ AND DULY RECORDED IN PLAT BOOK NO. \_\_\_\_\_  
 ON PAGE \_\_\_\_\_  
 SHARON R. BOCK, CLERK AND COMPTROLLER  
 BY \_\_\_\_\_ DC

THIS INSTRUMENT WAS PREPARED BY PAUL D. ENGLE,  
 IN THE OFFICE OF O'BRIEN, SUITER & O'BRIEN, INC.,  
 955 N.W. 17TH AVENUE, SUITE K1, DELRAY BEACH,  
 FLORIDA 33445 (561) 276-4501



- LEGEND:
- CL = CENTERLINE
  - CONC = CONCRETE
  - O.R.B. = OFFICIAL RECORDS BOOK
  - P.R.M. = PERMANENT REFERENCE MONUMENT (4"x4" CONCRETE MONUMENT STAMPED "PRM LB353") UNLESS STATED OTHERWISE
  - G.U.E. = GENERAL UTILITY EASEMENT
  - P.B.C.P.R. = PALM BEACH COUNTY PUBLIC RECORDS