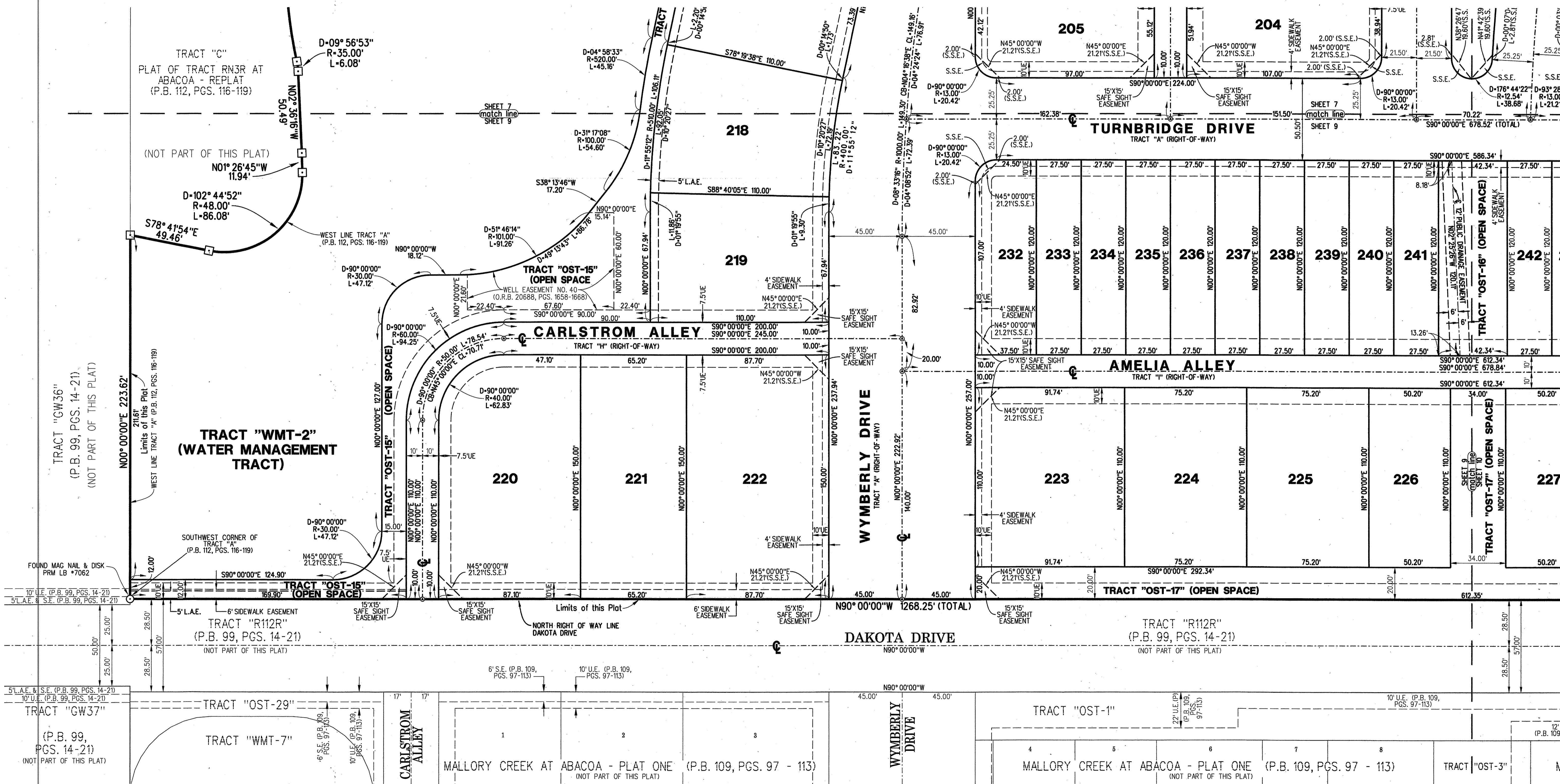
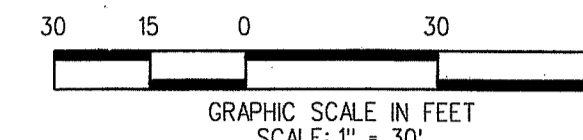
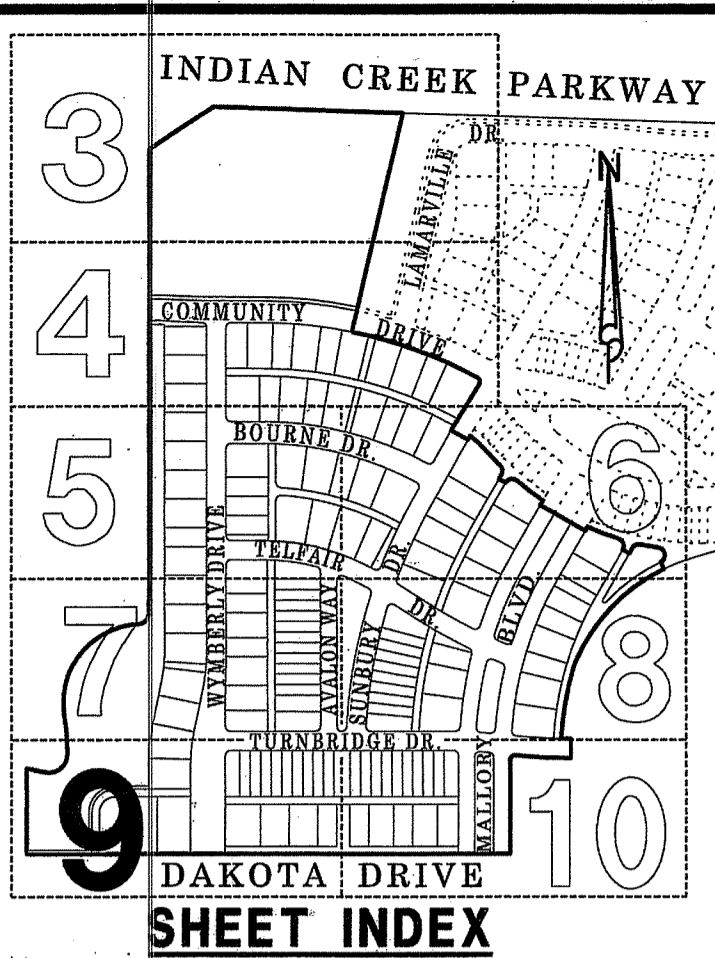


96

WINDSOR PARK AT ABACOA - PLAT NO. 2

BEING A REPLAT OF A PORTION OF TRACT "A" OF THE PLAT OF TRACT RN3R AT ABACOA - REPLAT AS RECORDED IN PLAT BOOK 112, PAGES 116 THROUGH 119, PUBLIC RECORDS OF PALM BEACH COUNTY, FLORIDA. LYING IN SECTION 14, TOWNSHIP 41 SOUTH, RANGE 42 EAST, TOWN OF JUPITER, PALM BEACH COUNTY, FLORIDA
NOVEMBER 2012
SHEET 9 OF 10



LEGEND:

- ⊙ DENOTES PERMANENT CONTROL POINT (P.C.P.)
- ⊙ SET MAG NAIL & DISK STAMPED "PCP LB4431" UNLESS OTHERWISE NOTED
- ⊙ DENOTES PERMANENT REFERENCE MONUMENT (P.R.M.)
- ⊙ SET MAG NAIL & DISK STAMPED "PRM LB4431" UNLESS OTHERWISE NOTED
- ⊙ DENOTES PERMANENT REFERENCE MONUMENT (P.R.M.)
- ⊙ SET 4"x4" CONCRETE MONUMENT WITH DISK STAMPED "PRM LB4431" UNLESS OTHERWISE NOTED
- ⊙ DENOTES CENTERLINE OF RIGHT OF WAY
- LINES, WHICH INTERSECT CURVES, ARE RADIAL UNLESS OTHERWISE NOTED

ABBREVIATIONS:

- | | | | | | |
|--------|---------------------------|--------|-------------------------------------|----------|------------------------------------|
| CB | = CHORD BEARING | N.E. | = NORTHEAST | P.S.M. | = PROFESSIONAL SURVEYOR AND MAPPER |
| CL | = CHORD LENGTH | N.W. | = NORTHWEST | R | = RADIUS |
| D | = DELTA | (P) | = AS SHOWN ON P.B. 114 PGS. 135-142 | R.W.L.E. | = RAW WATER LINE EASEMENT |
| D.E. | = DRAINAGE EASEMENT | P.C.P. | = PERMANENT CONTROL POINT | S.E. | = SOUTHEAST |
| F.P.L. | = FLORIDA POWER & LIGHT | P.B. | = PLAT BOOK | S.S.E. | = SAFE SIGHT EASEMENT |
| L | = ARC LENGTH | P.D.E. | = PUBLIC DRAINAGE EASEMENT | S.W. | = SOUTHWEST |
| L.A.E. | = LIMITED ACCESS EASEMENT | PG. | = PAGE | U.E. | = UTILITY EASEMENT |
| D.R.B. | = OFFICIAL RECORD BOOK | P.R.M. | = PERMANENT REFERENCE MONUMENT | | |

LIDBERG LAND SURVEYING, INC.

675 West Indiantown Road, Suite 200, Jupiter, Florida 33458 TEL. 561-746-8454

CAD. K:\UST\144142\WINDSOR\10-025A-306 & 10-025A-306.DGN	
REF.	
FLD.	
OFF. CASASUS	JOB 10-025A-306
CKD. D.C.L.	DATE NOVEMBER 2012
SHEET 9	OF 10
DWG. D10-025FP	