

COLONY LAKE RE-PLAT NO. 1

BEING A REPLAT OF A PORTION OF COLONY LAKE

RECORDED IN PLAT BOOK 107, PAGES 40 THROUGH 42, PUBLIC RECORDS OF PALM BEACH COUNTY, FLORIDA

ALSO LYING WITHIN A PORTION OF

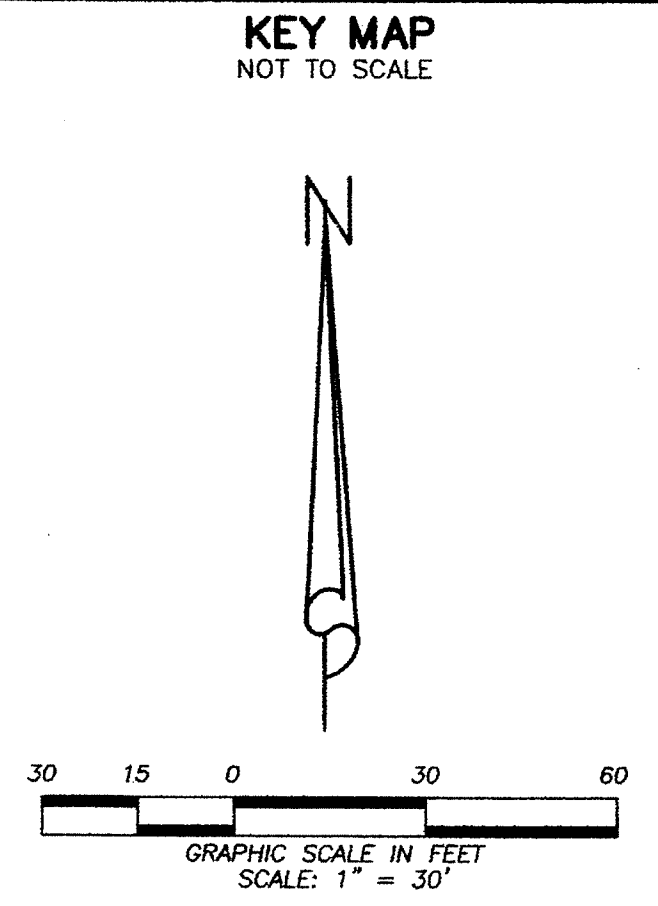
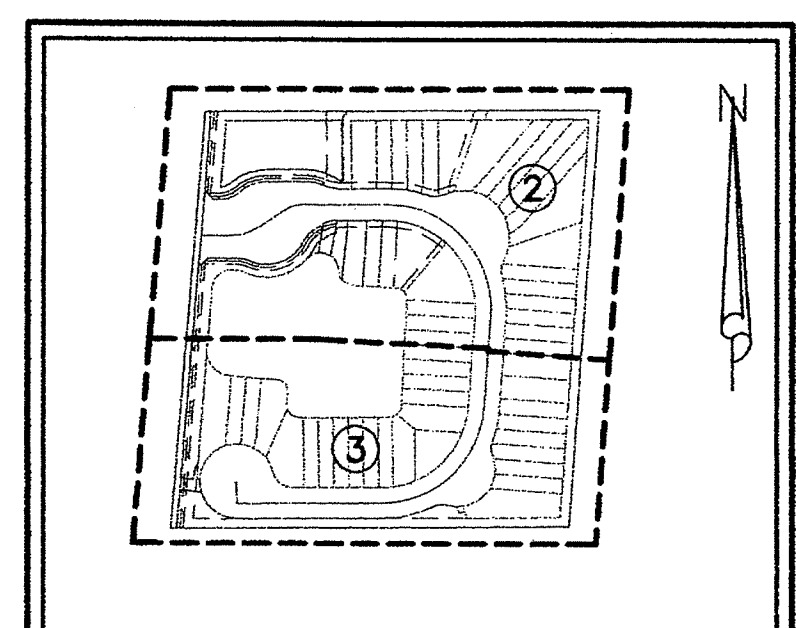
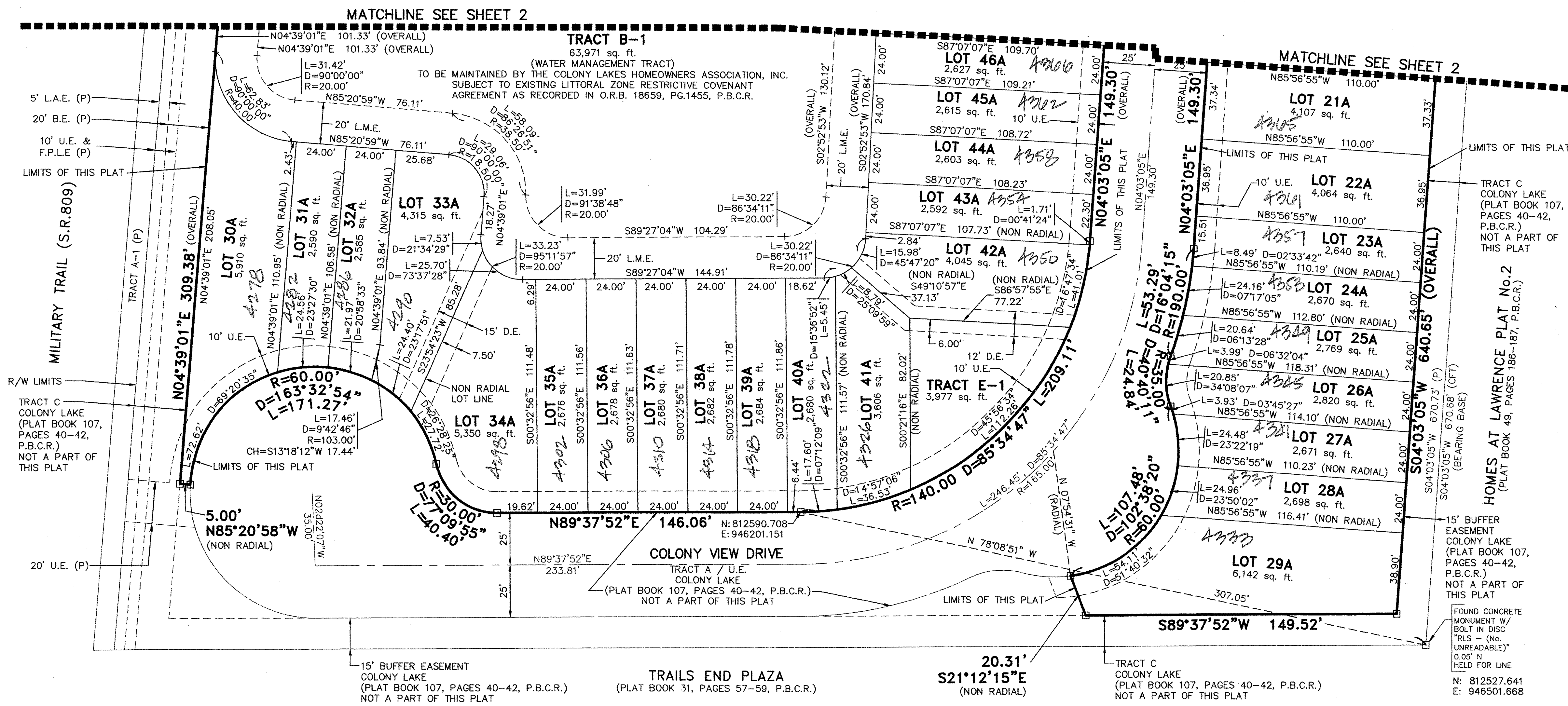
SECTION 12, TOWNSHIP 45 SOUTH, RANGE 42 EAST, PALM BEACH COUNTY, FLORIDA

SHEET 3 OF 3

STATE OF FLORIDA)
 COUNTY OF PALM BEACH) S.S.

THIS INSTRUMENT WAS FILED FOR RECORD AT _____ M.
 THIS _____ DAY OF _____, 20____
 AND DULY RECORDED IN:
 PLAT BOOK _____
 ON PAGE _____
 SHARON R. BOCK
 CLERK & COMPTROLLER
 PALM BEACH COUNTY

BY: _____
 DEPUTY CLERK



LEGEND

B.E.	= BUFFER EASEMENT	P.B.C.R.	= PALM BEACH COUNTY RECORDS
CH	= CHORD DIRECTION & LENGTH	P.C.N.	= PARCEL CONTROL NUMBER
D	= CENTRAL ANGLE	PG.	= PAGE(S)
F.P.L.E.	= FLORIDA POWER AND LIGHT EASEMENT	P.R.M.	= PERMANENT REFERENCE MONUMENT
L	= ARC LENGTH	R	= RADIUS
L.A.E.	= LIMITED ACCESS EASEMENT	(T)	= TOTAL
LB	= LICENSED BUSINESS	U.E.	= UTILITY EASEMENT
L.M.A.E.	= LAKE MAINTENANCE ACCESS EASEMENT	□	= PERMANENT REFERENCE MONUMENT (P.R.M.) 4" DIAMETER CONCRETE MONUMENT WITH P.K. NAIL IN BRASS DISC STAMPED "PRM LB 6599"
L.M.E.	= LAKE MAINTENANCE EASEMENT		
O.R.B.	= OFFICIAL RECORD BOOK		
(P)	= PER THE PLAT OF COLONY LAKE (P.B. 107, PG. 40 P.B.C.R.)		
P.B.	= PLAT BOOK		

SHEET 3 OF 3

THIS INSTRUMENT WAS PREPARED BY:
 DAVID A. BOWER, P.S.M. #5888 IN THE OFFICES
 OF DENNIS J. LEAVY AND ASSOCIATES, INC.
 CERTIFICATE OF AUTHORIZATION NUMBER: LB6599
 460 BUSINESS PARK WAY, SUITE B
 ROYAL PALM BEACH, FLORIDA 33411
 PHONE: (561) 753 - 0650
 FAX: (561) 753 - 0290
 E-MAIL: DJLASSO@BELLSOUTH.NET

DENNIS J. LEAVY & ASSOCIATES, INC.
LAND SURVEYORS AND MAPPERS
 460 BUSINESS PARK WAY * SUITE B * ROYAL PALM BEACH, FL * 33411
 PHONE: (561) 753-0650 FAX: (561) 753-0290
 E-MAIL: DJLASSO@BELLSOUTH.NET

SCALE: AS SHOWN	CHECKED BY: DAB	DATE: 09/06/12
DRAWN BY: NFC	JOB NO.: 12-056-001	