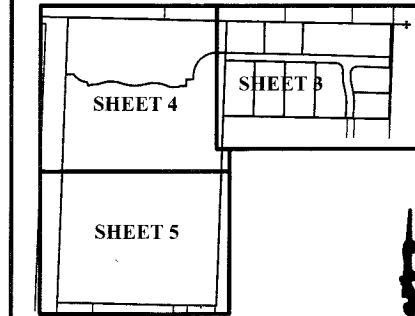


# ALDI PARK

BEING A REPLAT OF COUNTRY WEST AS RECORDED IN PLAT BOOK 40, PAGES 179 & 180, OF THE PUBLIC RECORDS OF PALM BEACH COUNTY, FLORIDA, LYING IN THE NORTHEAST ONE-QUARTER OF SECTION 25, TOWNSHIP 43 SOUTH, RANGE 41 EAST, VILLAGE OF ROYAL PALM BEACH, PALM BEACH COUNTY, FLORIDA ALONG WITH THE SOUTHEAST ONE-QUARTER OF THE NORTHWEST ONE-QUARTER OF THE NORTHEAST ONE-QUARTER OF SECTION 25, TOWNSHIP 43 SOUTH, RANGE 41 EAST, PALM BEACH COUNTY, FLORIDA

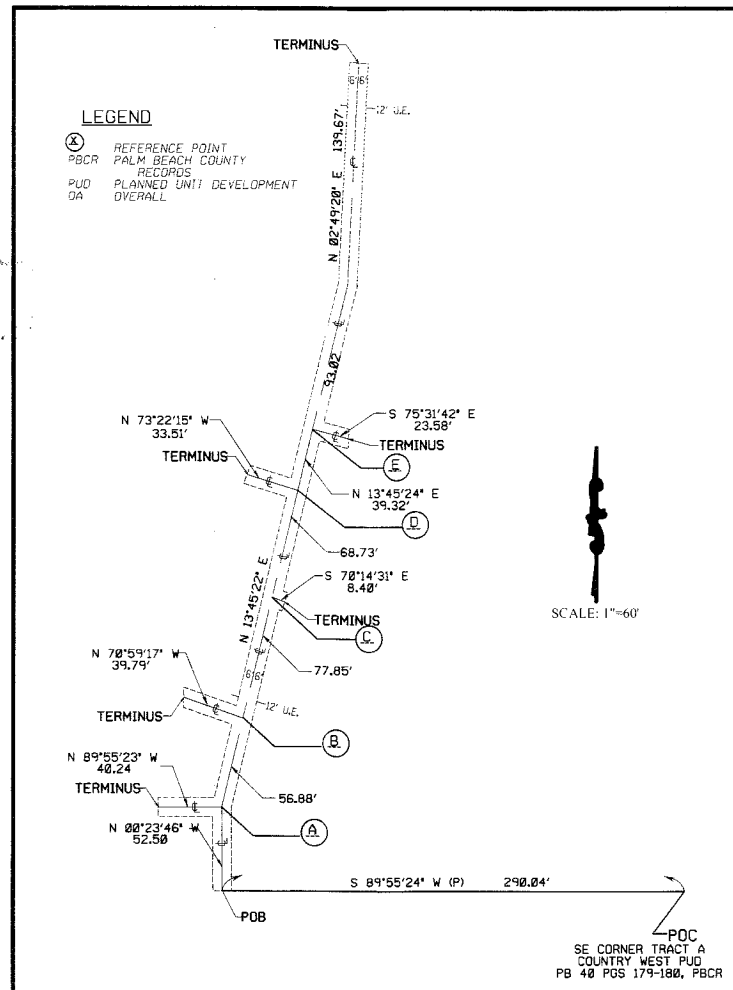


KEY MAP  
NOT TO SCALE

23

STATE OF FLORIDA  
COUNTY OF PALM BEACH  
THIS PLAT WAS FILED FOR  
RECORD AT \_\_\_\_\_ M.  
THIS \_\_\_\_\_ DAY OF \_\_\_\_\_  
A.D. 20\_\_\_\_ AND DULY RECORDED  
IN PLAT BOOK \_\_\_\_\_ ON  
PAGES \_\_\_\_\_ AND \_\_\_\_\_  
SHARON R. BOCK  
CLERK AND COMPTROLLER  
BY: \_\_\_\_\_  
DEPUTY CLERK

UTILITY EASEMENT DETAIL ORB 14578, PG. 1892



NOTE: SE CORNER TRACT A, COUNTRY WEST PUD, PB 40 PGS 179-180, PBCR NOW KNOWN AS SE CORNER PARCEL 10, ALDI PARK

UTILITY EASEMENT LEGAL DESCRIPTION ORB 14578, PG. 1892

12 FOOT WIDE UTILITY EASEMENTS BEING PORTIONS OF TRACT A, COUNTRY WEST PUD, AS RECORDED IN PLAT BOOK 40, PAGES 179 AND 180, IN THE PUBLIC RECORDS OF PALM BEACH COUNTY, FLORIDA, THE CENTERLINES MORE PARTICULARLY DESCRIBED AS FOLLOWS:

COMMENCING AT THE SOUTH EAST CORNER OF SAID TRACT A, COUNTRY WEST PUD, THENCE SOUTH 89°55'24" WEST ALONG THE SOUTH LINE OF SAID TRACT A (BEARING BASE) FOR A DISTANCE OF 294.04 FEET TO THE POINT OF BEGINNING;

THENCE NORTH 00°23'46" WEST FOR A DISTANCE OF 52.50 FEET TO A POINT HEREINAFTER REFERRED TO AS REFERENCE POINT A;  
THENCE NORTH 13°45'22" EAST FOR A DISTANCE OF 56.88 FEET TO A POINT HEREINAFTER REFERRED TO AS REFERENCE POINT B;  
THENCE NORTH 13°45'22" EAST FOR A DISTANCE OF 77.85 FEET TO A POINT HEREINAFTER REFERRED TO AS REFERENCE POINT C;  
THENCE NORTH 13°45'22" EAST FOR A DISTANCE OF 68.73 FEET TO A POINT HEREINAFTER REFERRED TO AS REFERENCE POINT D;  
THENCE NORTH 13°45'22" EAST FOR A DISTANCE OF 39.32 FEET TO A POINT HEREINAFTER REFERRED TO AS REFERENCE POINT E;  
THENCE NORTH 02°49'20" WEST FOR A DISTANCE OF 139.67 FEET TO THE TERMINUS.

TOGETHER WITH:  
BEGINNING AT REFERENCE POINT A, THENCE NORTH 89°55'23" WEST FOR A DISTANCE OF 40.24 FEET TO THE TERMINUS.

ALSO TOGETHER WITH:  
BEGINNING AT REFERENCE POINT B, THENCE NORTH 70°59'17" WEST FOR A DISTANCE OF 39.79 FEET TO THE TERMINUS.

ALSO TOGETHER WITH:  
BEGINNING AT REFERENCE POINT C, THENCE SOUTH 70°14'31" WEST FOR A DISTANCE OF 8.40 FEET TO THE TERMINUS.

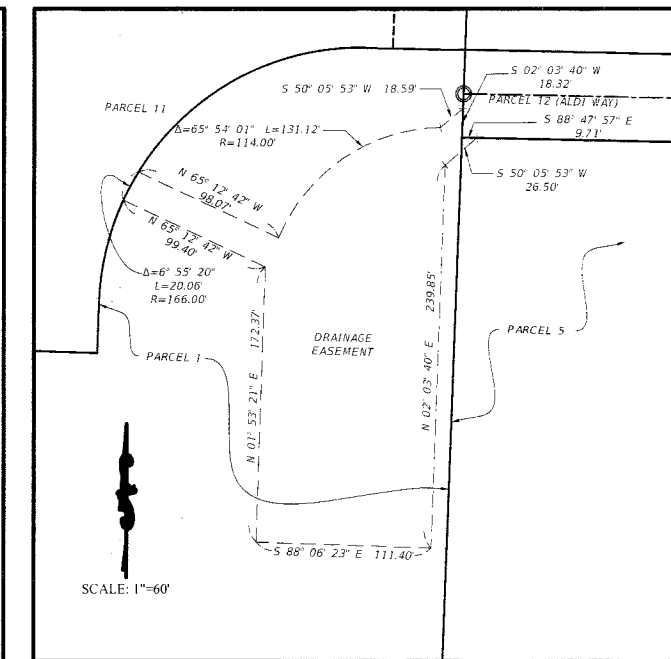
ALSO TOGETHER WITH:  
BEGINNING AT REFERENCE POINT D, THENCE NORTH 73°22'15" WEST FOR A DISTANCE OF 33.51 FEET TO THE TERMINUS.

ALSO TOGETHER WITH:  
BEGINNING AT REFERENCE POINT E, THENCE SOUTH 75°31'42" EAST FOR A DISTANCE OF 23.58 FEET TO THE TERMINUS.

THE SIDE LINES OF THE LAST FOUR COURSES TO BE LENGTHEN OR SHORTEN TO TERMINATE AT THE SIDE LINES OF THE 60 FOOT ROADWAY EASEMENT.

SAID LAND SITUATE IN PALM BEACH COUNTY, FLORIDA AND CONTAIN 7701 SQUARE FEET.

DRAINAGE EASEMENT DETAIL



LEGEND:

- ⊙ = CENTERLINE
- C.P.B. = COUNTY OF PALM BEACH
- D.B. = DEED BOOK
- D.E. = DRAINAGE EASEMENT
- L = LENGTH
- LB = LICENSED BUSINESS
- LLC = LIMITED LIABILITY CORPORATION
- ORB = OFFICIAL RECORDS BOOK
- ℙ = PROPERTY LINE
- P.B. = PLAT BOOK
- PCP = PERMANENT CONTROL POINT
- PG. = PAGE
- POB = POINT OF BEGINNING
- POC = POINT OF COMMENCEMENT
- PRM = PERMANENT REFERENCE MONUMENT
- PSM = PROFESSIONAL SURVEYOR & MAPPER
- R = RADIUS
- R/W = RIGHT OF WAY
- O.R.B. = OFFICIAL RECORD BOOK
- U.E. = UTILITY EASEMENT
- Δ = DELTA ANGLE
- = FOUND 4"X4" CONCRETE MONUMENT
- = SET 5/8" IRON ROD IN CONCRETE WITH ALUMINUM DISK STAMPED "ERDMAN ANTHONY PRM LB 7334"
- = SET MAG NAIL WITH DISK STAMPED "PCP LB 7334"
- ⊕ = SECTION CORNER

SHEET 7 of 7

**ERDMAN ANTHONY**  
1402 ROYAL PALM BEACH BLVD., BLDG 500  
ROYAL PALM BEACH, FLORIDA 33411  
TELEPHONE 561-753-9723 FAX 561-753-9724  
LB-7334