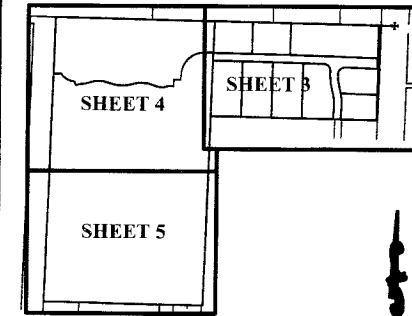


ALDI PARK

BEING A REPLAT OF COUNTRY WEST AS RECORDED IN PLAT BOOK 40, PAGES 179 & 180, OF THE PUBLIC RECORDS OF PALM BEACH COUNTY, FLORIDA, LYING IN THE NORTHEAST ONE-QUARTER OF SECTION 25, TOWNSHIP 43 SOUTH, RANGE 41 EAST, VILLAGE OF ROYAL PALM BEACH, PALM BEACH COUNTY, FLORIDA ALONG WITH THE SOUTHEAST ONE-QUARTER OF THE NORTHWEST ONE-QUARTER OF THE NORTHEAST ONE-QUARTER OF SECTION 25, TOWNSHIP 43 SOUTH, RANGE 41 EAST, PALM BEACH COUNTY, FLORIDA

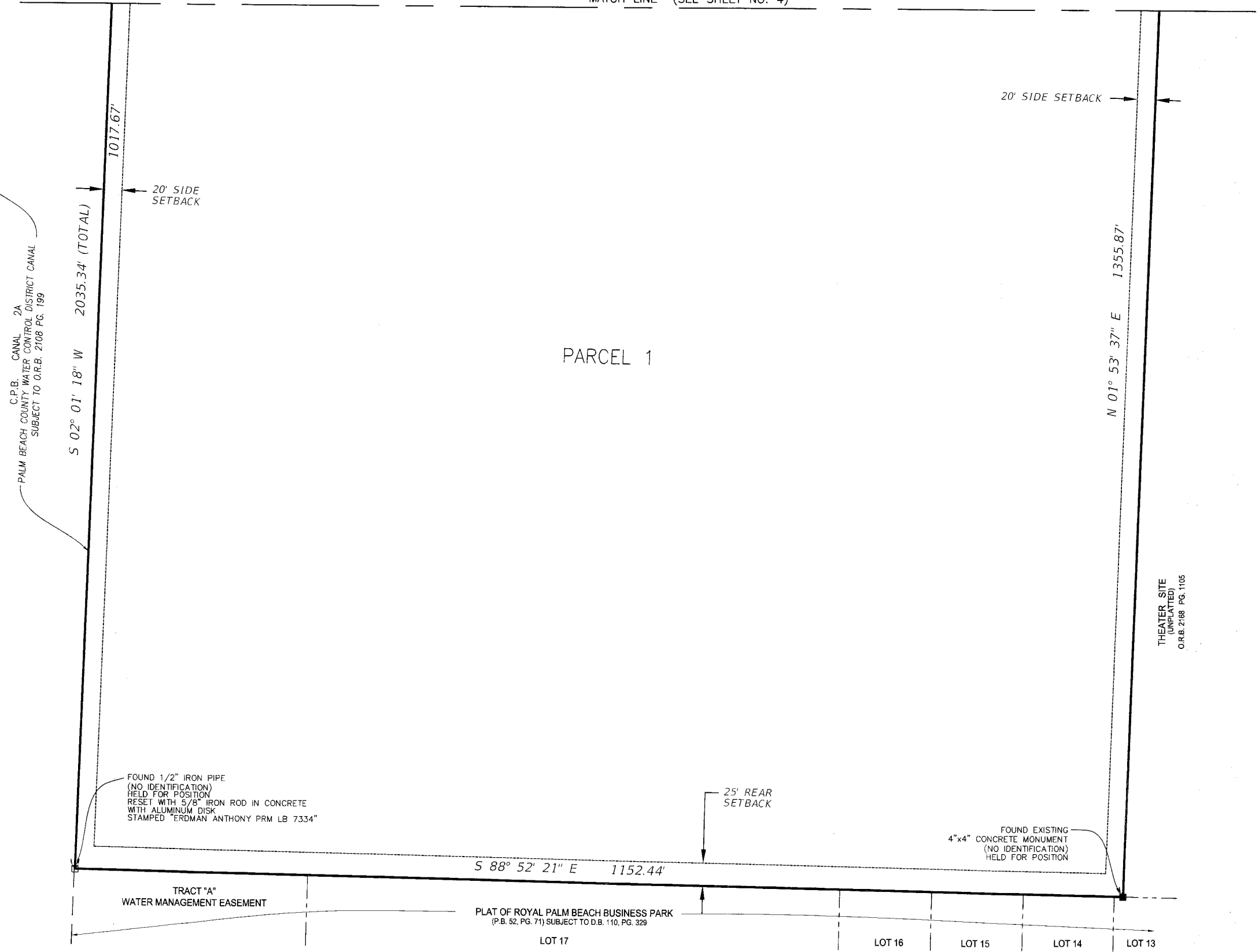
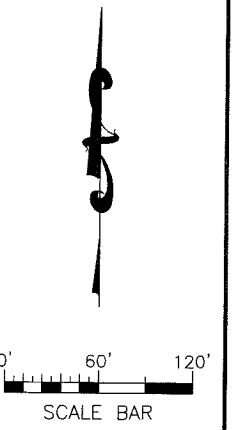
21



STATE OF FLORIDA
 COUNTY OF PALM BEACH
 THIS PLAT WAS FILED FOR
 RECORD AT _____ M.
 THIS _____ DAY OF _____
 A.D. 20____ AND DULY RECORDED
 IN PLAT BOOK _____ ON
 PAGES _____ AND _____
 SHARON R. BOCK
 CLERK AND COMPTROLLER
 BY: _____
 DEPUTY CLERK

MATCH LINE (SEE SHEET NO. 4)

KEY MAP
 NOT TO SCALE



C.P.B. CANAL 2A
 PALM BEACH COUNTY WATER CONTROL DISTRICT CANAL
 SUBJECT TO O.R.B. 2108 PG. 199

S 02° 01' 18" W 2035.34' (TOTAL)

1017.67'

20' SIDE SETBACK

PARCEL 1

20' SIDE SETBACK

N 01° 53' 37" E 1355.87'

THEATER SITE
 (UNPLATTED)
 O.R.B. 2168 PG. 1105

FOUND 1/2" IRON PIPE
 (NO IDENTIFICATION)
 HELD FOR POSITION
 RESET WITH 5/8" IRON ROD IN CONCRETE
 WITH ALUMINUM DISK
 STAMPED "ERDMAN ANTHONY PRM LB 7334"

25' REAR SETBACK

FOUND EXISTING
 4"x4" CONCRETE MONUMENT
 (NO IDENTIFICATION)
 HELD FOR POSITION

S 88° 52' 21" E 1152.44'

TRACT "A"
 WATER MANAGEMENT EASEMENT

PLAT OF ROYAL PALM BEACH BUSINESS PARK
 (P.B. 52, PG. 71) SUBJECT TO D.B. 110, PG. 329

LOT 17

LOT 16

LOT 15

LOT 14

LOT 13

LEGEND:

- CL = CENTERLINE
- C.P.B. = COUNTY OF PALM BEACH
- D.B. = DEED BOOK
- D.E. = DRAINAGE EASEMENT
- L = LENGTH
- LB = LICENSED BUSINESS
- LLC = LIMITED LIABILITY CORPORATION
- ORB = OFFICIAL RECORDS BOOK
- PL = PROPERTY LINE
- P.B. = PLAT BOOK
- PCP = PERMANENT CONTROL POINT
- PG. = PAGE
- POB = POINT OF BEGINNING
- POC = POINT OF COMMENCEMENT
- PRM = PERMANENT REFERENCE MONUMENT
- PSM = PROFESSIONAL SURVEYOR & MAPPER
- R = RADIUS
- R/W = RIGHT OF WAY
- O.R.B. = OFFICIAL RECORD BOOK
- U.E. = UTILITY EASEMENT
- Δ = DELTA ANGLE
- = FOUND 4"x4" CONCRETE MONUMENT
- = SET 5/8" IRON ROD IN CONCRETE WITH ALUMINUM DISK STAMPED "ERDMAN ANTHONY PRM LB 7334"
- = SET MAG NAIL WITH DISK STAMPED "PCP LB 7334"
- ⊕ = SECTION CORNER

SHEET 5 of 7

ERDMAN ANTHONY

1402 ROYAL PALM BEACH BLVD., BLDG 500
 ROYAL PALM BEACH, FLORIDA 33411
 TELEPHONE 561-753-9723 FAX 561-753-9724
 EB-25912 LB-7334