

PERIMETER

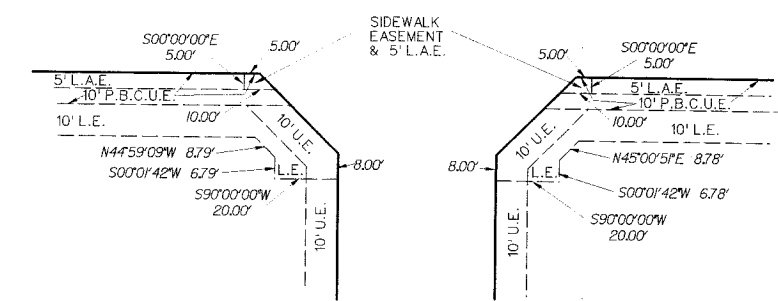
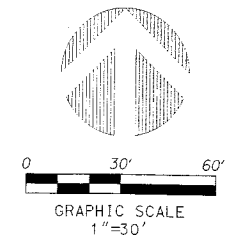
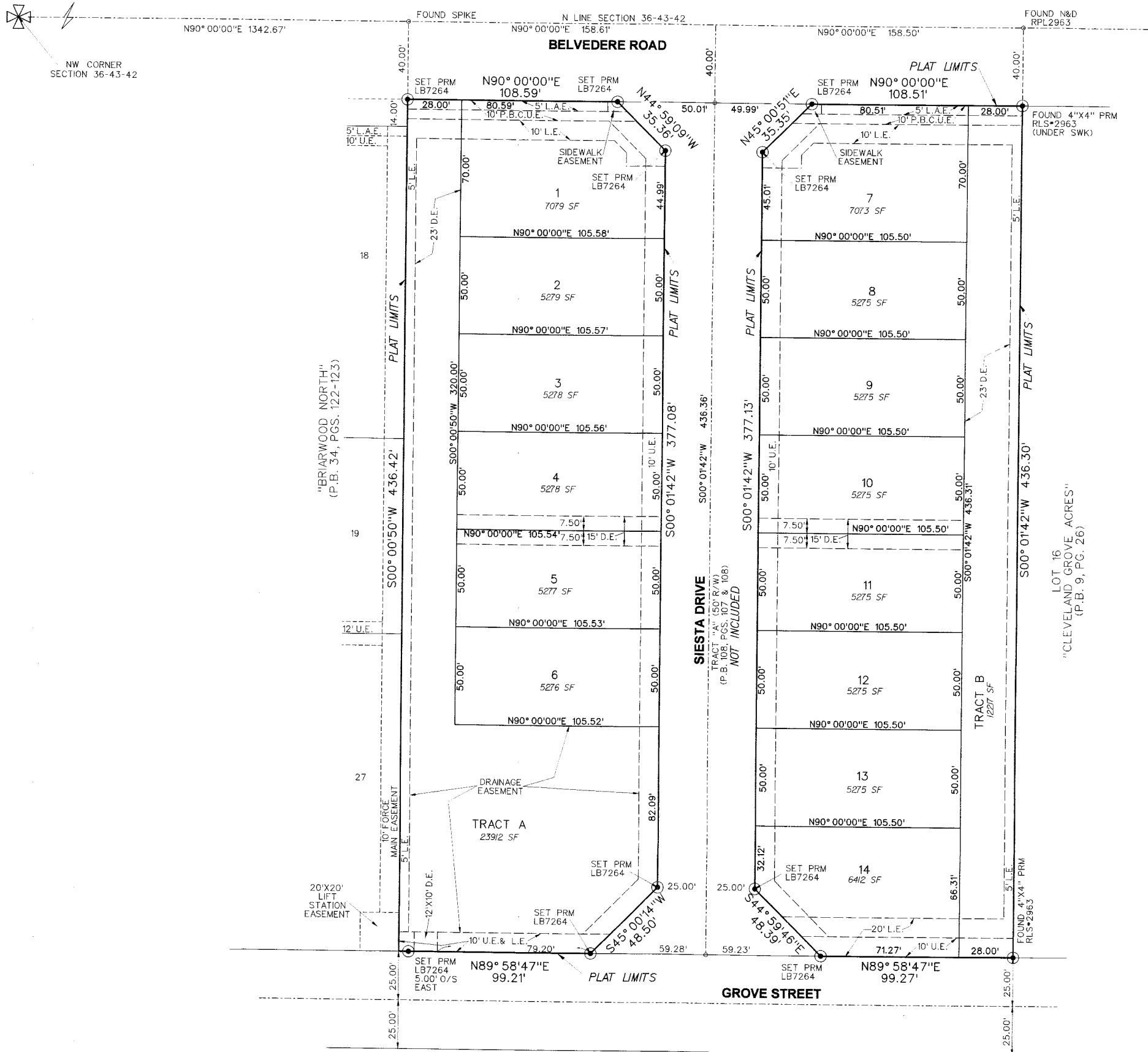
SURVEYING & MAPPING
 Certificate of Authorization No. LB7264
 Prepared by: Jeff S. Hodapp, P.S.M.
 949A Clint Moore Road
 Boca Raton, Florida 33487
 Tel: (561) 241-9988
 Fax: (561) 241-5182

SUNSET ISLES REPLAT

A REPLAT OF LOTS 1 THROUGH 16, "PLAT OF SUNSET ISLES",
 (P.B. 108, PGS. 107 & 108, P.B.C.R.) IN SECTION 36, TOWNSHIP 43 SOUTH, RANGE 42 EAST
 TOWN OF HAVERHILL, PALM BEACH COUNTY, FLORIDA.
 JULY, 2012

176

SHEET 2 OF 2



DETAIL 1"=30'

- LEGEND:**
- SET P.R.M. (UNLESS OTHERWISE NOTED) - 4" X 4" CONC. MON. WITH ALUMINUM DISK STAMPED P.R.M. #LB7264
 - P.C.P.
 - CENTERLINE
- ABBREVIATIONS:**
- D.E. DRAINAGE EASEMENT
 - L.A.E. LIMITED ACCESS EASEMENT
 - L.B. LICENSED BUSINESS
 - L.E. LANDSCAPE EASEMENT
 - L.S. LICENSED SURVEYOR
 - MON. MONUMENT
 - O.R.B. OFFICIAL RECORDS BOOK
 - O/S OFFSET
 - P.B. PLAT BOOK
 - P.B.C.R. PALM BEACH COUNTY RECORDS
 - P.B.C. U.E. PALM BEACH COUNTY UTILITY EASEMENT
 - PG. PAGE
 - PGS. PAGES
 - P.C.P. PERMANENT CONTROL POINT
 - P.R.M. PERMANENT REFERENCE MONUMENT
 - P.S.M. PROFESSIONAL SURVEYOR & MAPPER
 - R/W RIGHT-OF-WAY
 - SF SQUARE FEET
 - U.E. UTILITY EASEMENT