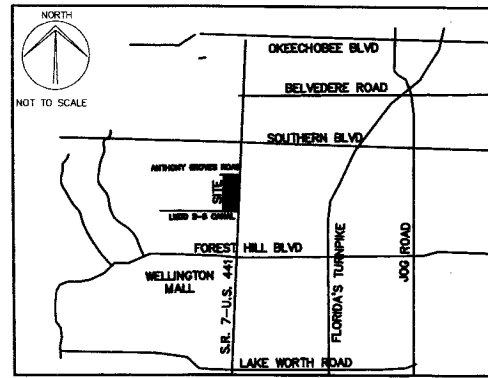


ARCHSTONE-FUTURA ENCLAVE

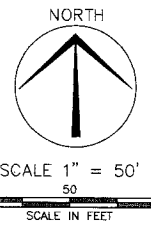
BEING A PARCEL OF LAND LYING IN THE EAST (1/2) OF SECTION 1, TOWNSHIP 44 SOUTH,
RANGE 41 EAST, VILLAGE OF ROYAL PALM BEACH, PALM BEACH COUNTY, FLORIDA.

JANUARY 20 12



VICINITY MAP
(NOT TO SCALE)

THIS INSTRUMENT WAS PREPARED BY:
MARK R. MINTER, P.S.M. #5785 OF
CRAVEN THOMPSON & ASSOCIATES, INC.
ENGINEERS PLANNERS SURVEYORS
3563 N.W. 53RD STREET FORT LAUDERDALE, FLORIDA 33309
TEL.: (954) 739-6400 FAX: (954) 739-6409
JUNE 2011 06-0053

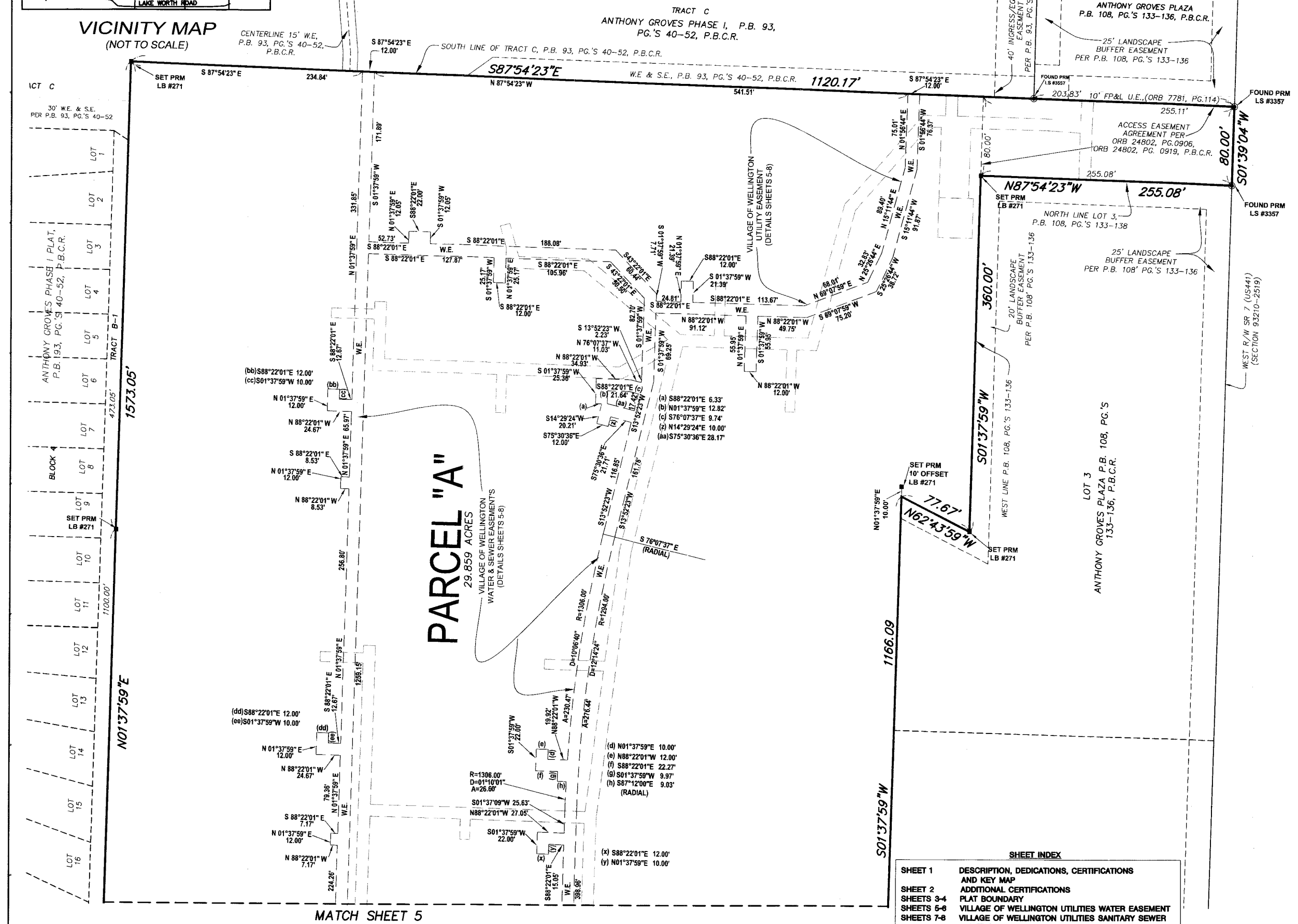


SCALE 1" = 50'
SCALE IN FEET

124

STATE OF FLORIDA
COUNTY OF PALM BEACH
THIS PLAT WAS FILED FOR RECORD AT
THIS DAY OF _____, 20____
AND DULY RECORDED IN PLAT BOOK NO. _____
SHARON R. BOCK,
CLERK & COMPTROLLER
BY _____ DEPUTY CLERK

SHEET 6 OF 8 SHEETS



PARCEL "A"
29.659 ACRES
VILLAGE OF WELLINGTON
WATER & SEWER EASEMENTS
(DETAILS SHEETS 5-8)

LOT 3
ANTHONY GROVES PLAZA P.B. 108, P.G.'S
133-136, P.B.C.R.

SHEET INDEX

SHEET 1	DESCRIPTION, DEDICATIONS, CERTIFICATIONS AND KEY MAP
SHEET 2	ADDITIONAL CERTIFICATIONS
SHEETS 3-4	PLAT BOUNDARY
SHEETS 5-6	VILLAGE OF WELLINGTON UTILITIES WATER EASEMENT
SHEETS 7-8	VILLAGE OF WELLINGTON UTILITIES SANITARY SEWER & LIFT STATION EASEMENT

STATE ROAD 7 (US 441)