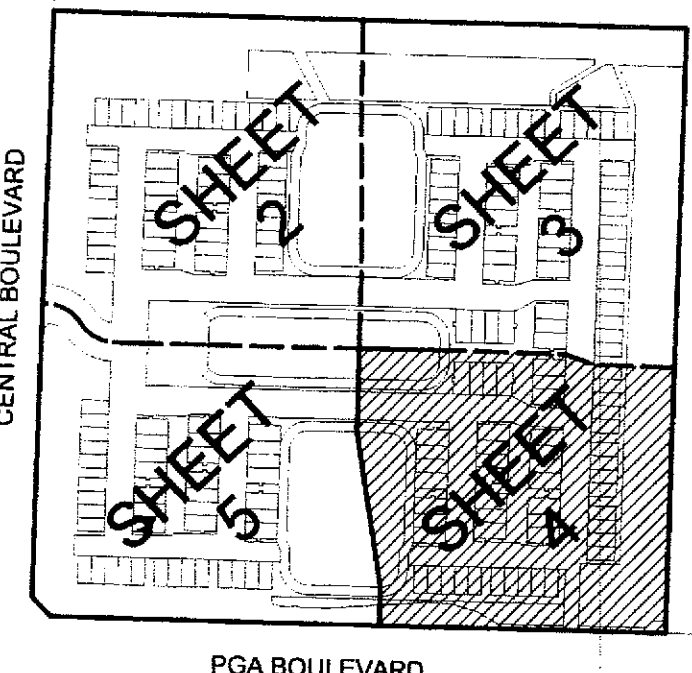
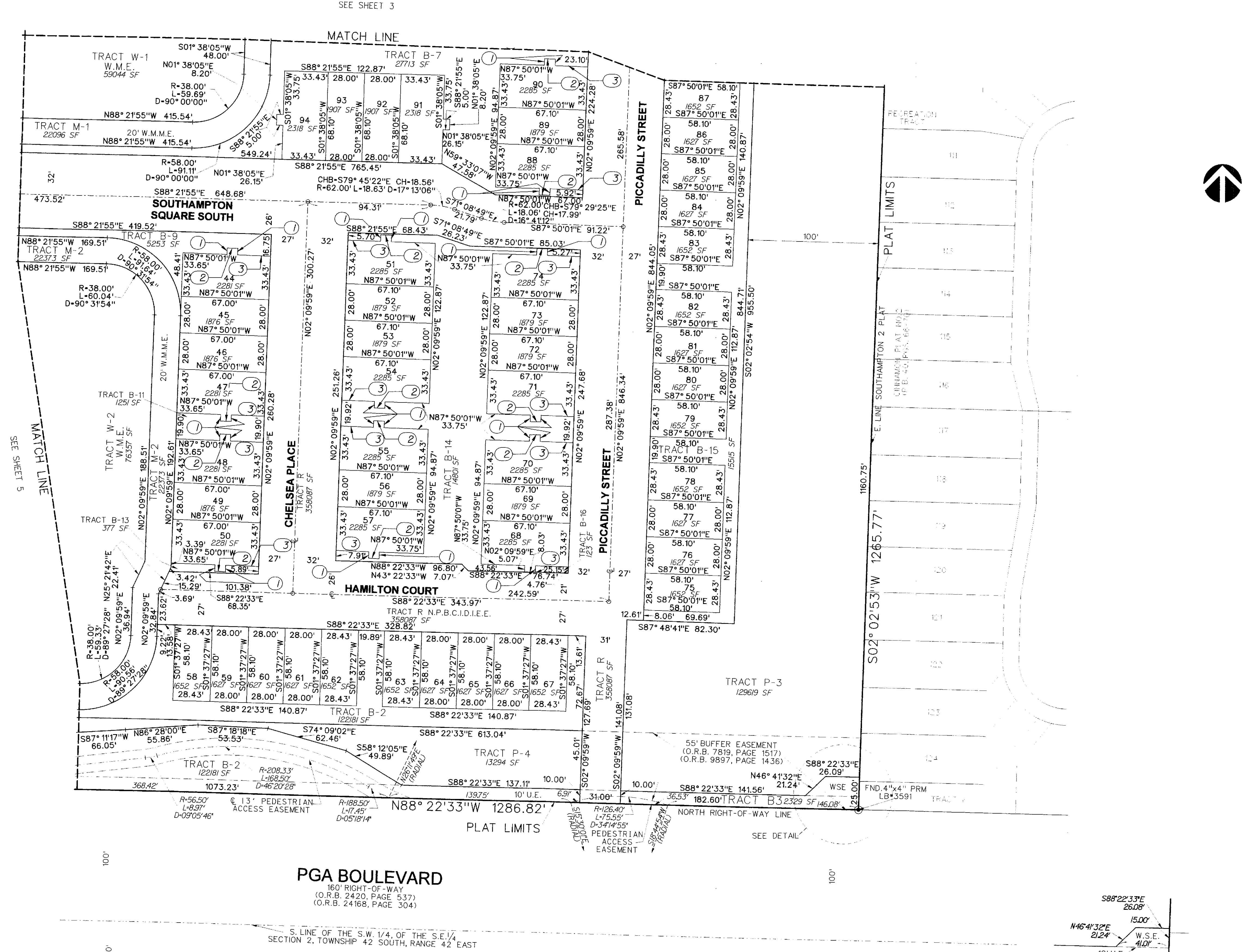
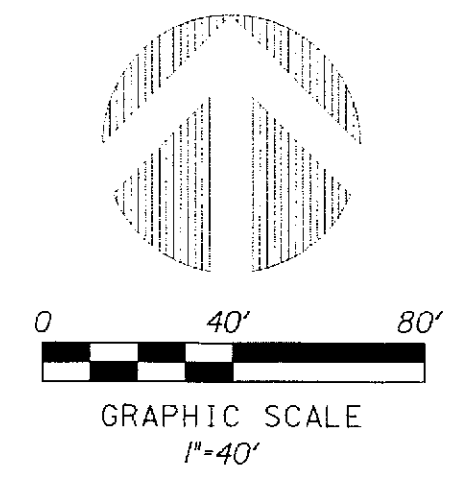


# SOUTHAMPTON 2 REPLAT

A REPLAT OF ALL OF "SOUTHAMPTON 2", (P.B. 107, PGS 123-131, P.B.C.R.)  
 LYING IN SECTION 2, TOWNSHIP 42 SOUTH, RANGE 42 EAST,  
 CITY OF PALM BEACH GARDENS, PALM BEACH COUNTY, FLORIDA.  
 JANUARY 2012



**LOCATION MAP**  
 NOT TO SCALE

**LINE TABLE**

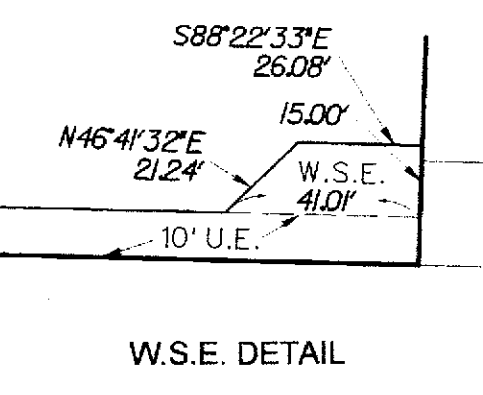
1.	N02°09'59"E	5.00'
2.	N87°50'01"W	8.20'
3.	N87°50'01"W	25.15'

**LEGEND:**

- SET P.R.M. (UNLESS OTHERWISE NOTED)-4" DIAMETER ALUMINUM DISK IN CONC. MON. STAMPED LB7264
- PERMANENT CONTROL POINT
- CENTERLINE
- LINE TABLE DESIGNATION

**ABBREVIATIONS:**

- AC. ACRES
- B.E. BUTTER EASEMENT
- CH CHORD
- CHB CHORD BEARING
- CONC. CONCRETE
- COR. CORNER
- Δ DELTA (CENTRAL ANGLE)
- D.E. DRAINAGE EASEMENT
- I.E.E. INGRESS-EGRESS EASEMENT
- I.R. IRON ROD
- I.R.C. IRON ROD AND CAP
- L. ARC LENGTH
- L.A.E. LIMITED ACCESS EASEMENT
- L.B. LICENSED BUSINESS
- L.B.E. LANDSCAPE BUFFER EASEMENT
- L.M.A.E. LAKE MAINTENANCE ACCESS EASEMENT
- L.S. LICENSED SURVEYOR
- L.S.E. LIFT STATION EASEMENT
- MON. MONUMENT
- N.P.B.C.I.D. NORTHERN PALM BEACH COUNTY IMPROVEMENT DISTRICT
- O.E. OVERHANG EASEMENT
- O.R.B. OFFICIAL RECORDS BOOK
- N.R. NON-RADIAL
- P.B. PLAT BOOK
- P.B.C.R. PALM BEACH COUNTY RECORDS
- P.E. PEDESTRIAN EASEMENT
- P.G. PAGE
- P.C.P. PERMANENT CONTROL POINT
- P.O.B. POINT OF BEGINNING
- P.O.C. POINT OF COMMENCEMENT
- P.R.M. PERMANENT REFERENCE MONUMENT
- P.S.M. PROFESSIONAL SURVEYOR & MAPPER
- P.U.D. PLANNED UNIT DEVELOPMENT
- R. RADIUS
- R.L. RADIAL LINE
- R/W. RIGHT-OF-WAY
- S.E. SEWER EASEMENT
- SEC. SECTION
- S.F. SQUARE FEET
- U.E. UTILITY EASEMENT
- W.M.E. WATER MANAGEMENT EASEMENT
- W.M.M.E. WATER MANAGEMENT MAINTENANCE EASEMENT
- W.S.E. WATER AND SEWER EASEMENT



**PGA BOULEVARD**  
 160' RIGHT-OF-WAY  
 (O.R.B. 2420, PAGE 537)  
 (O.R.B. 24168, PAGE 304)

S. LINE OF THE S.W. 1/4, OF THE S.E. 1/4,  
 SECTION 2, TOWNSHIP 42 SOUTH, RANGE 42 EAST