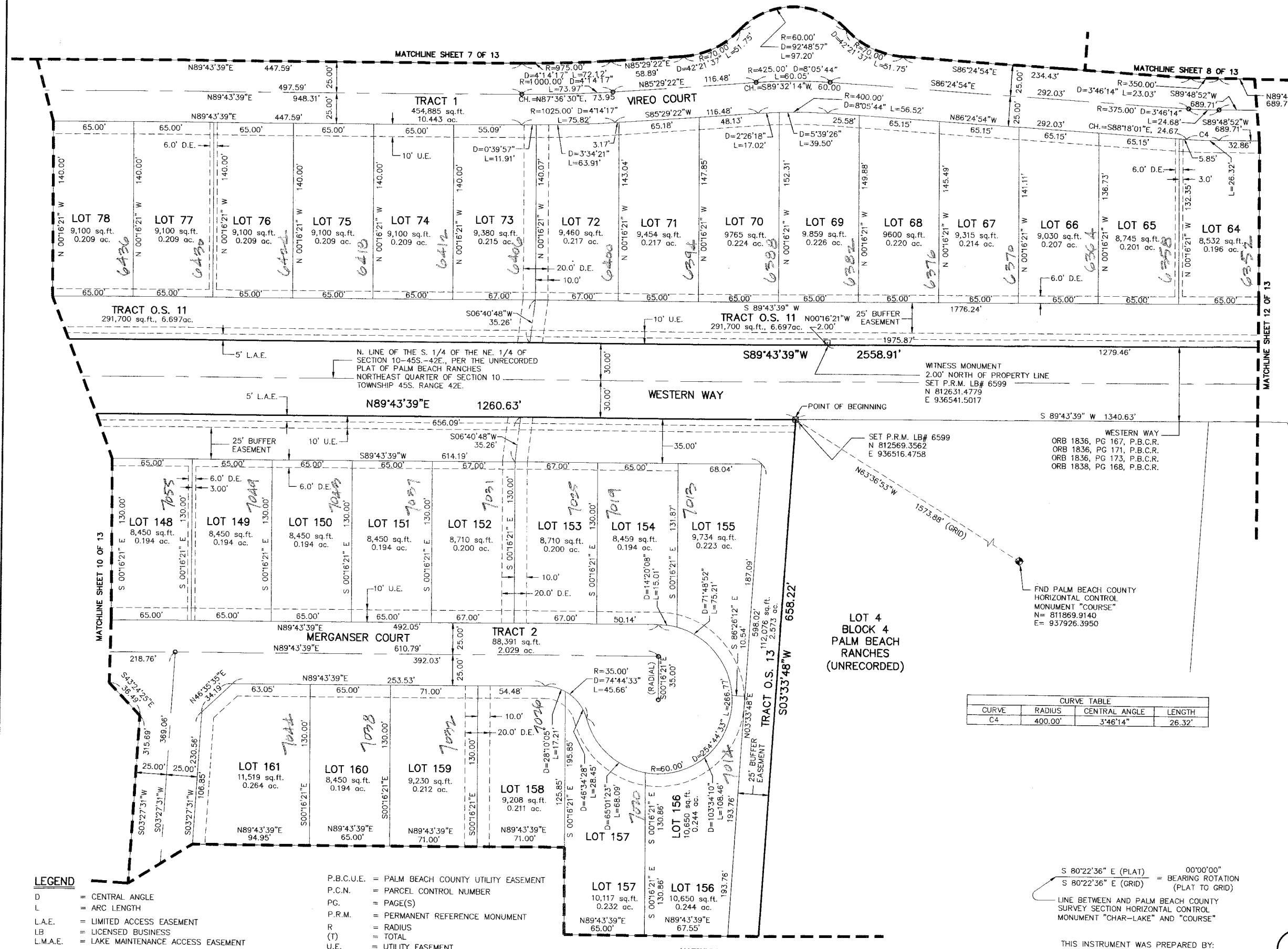


# OSPREY OAKS P.U.D.

A PARCEL OF LAND LYING WITHIN THE NORTHEAST ONE-QUARTER OF SECTION 10, TOWNSHIP 45 SOUTH, RANGE 42 EAST, PALM BEACH COUNTY, FLORIDA SHEET 11 OF 13

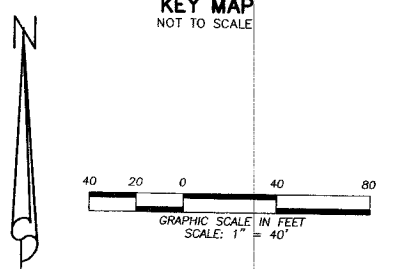
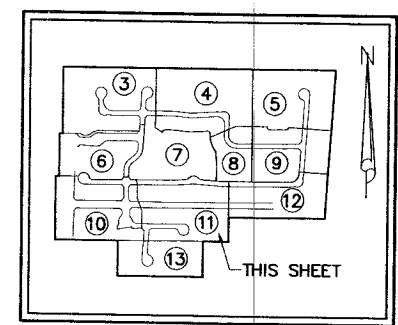
STATE OF FLORIDA ) S.S.  
 COUNTY OF PALM BEACH )

THIS INSTRUMENT WAS FILED FOR RECORD AT \_\_\_\_\_ M. THIS \_\_\_\_\_ DAY OF \_\_\_\_\_ 20\_\_\_\_ AND DULY RECORDED IN: PLAT BOOK \_\_\_\_\_ ON PAGE \_\_\_\_\_ SHARON R. BOCK CLERK & COMPTROLLER PALM BEACH COUNTY BY: \_\_\_\_\_ DEPUTY CLERK



POINT OF COMMENCEMENT NE CORNER OF SECTION 10-45S-42E

(BEARING BASE)  
 S 03°46'16" W 2,106.09'  
 E LINE OF THE NE 1/4 OF SECTION 10-45S-42E, NORTHEAST QUARTER OF SECTION 10 TOWNSHIP 45S, RANGE 42E.



CURVE	RADIUS	CENTRAL ANGLE	LENGTH
C4	400.00'	3°46'14"	26.32'

### LEGEND

- D = CENTRAL ANGLE
- L = ARC LENGTH
- L.A.E. = LIMITED ACCESS EASEMENT
- LB = LICENSED BUSINESS
- L.M.A.E. = LAKE MAINTENANCE ACCESS EASEMENT
- L.M.E. = LAKE MAINTENANCE EASEMENT
- O.R.B. = OFFICIAL RECORD BOOK
- P.B. = PLAT BOOK
- P.B.C.R. = PALM BEACH COUNTY RECORDS
- P.B.C.L.S.E. = PALM BEACH COUNTY LIFT STATION EASEMENT
- P.B.C.U.E. = PALM BEACH COUNTY UTILITY EASEMENT
- P.C.N. = PARCEL CONTROL NUMBER
- PG. = PAGE(S)
- P.R.M. = PERMANENT REFERENCE MONUMENT
- R = RADIUS
- (T) = TOTAL
- U.E. = UTILITY EASEMENT
- = PERMANENT REFERENCE MONUMENT (P.R.M.) 4" X 4" CONCRETE MONUMENT WITH P.K. NAIL IN BRASS DISC STAMPED "PRM LB 6599"
- = (P.C.P.) SET MAG NAIL IN BRASS DISC LB 6599

S 80°22'36" E (PLAT) = 00°00'00"  
 S 80°22'36" E (GRID) = BEARING ROTATION (PLAT TO GRID)

LINE BETWEEN AND PALM BEACH COUNTY SURVEY SECTION HORIZONTAL CONTROL MONUMENT "CHAR-LAKE" AND "COURSE"

THIS INSTRUMENT WAS PREPARED BY: DAVID A. BOWER, P.S.M. #5888 IN THE OFFICES OF DENNIS J. LEAVY AND ASSOCIATES, INC. CERTIFICATE OF AUTHORIZATION NUMBER: LB6599 460 BUSINESS PARK WAY, SUITE B ROYAL PALM BEACH, FLORIDA 33411 PHONE: (561) 753-0650 FAX: (561) 753-0290

SHEET 11 OF 13

**DENNIS J. LEAVY & ASSOCIATES, INC.**  
**LAND SURVEYORS AND MAPPERS**

460 BUSINESS PARK WAY • SUITE B • ROYAL PALM BEACH, FL • 33411  
 PHONE: (561) 753-0650 FAX: (561) 753-0290

SCALE: AS SHOWN CHECKED BY: DAB DATE: 01/04/11  
 DRAWN BY: RRM JOB NO.: 10-062-001