

# OSPREY OAKS P.U.D.

A PARCEL OF LAND LYING WITHIN THE NORTHEAST ONE-QUARTER OF SECTION 10, TOWNSHIP 45 SOUTH, RANGE 42 EAST, PALM BEACH COUNTY, FLORIDA SHEET 7 OF 13

STATE OF FLORIDA )  
 COUNTY OF PALM BEACH ) S.S.

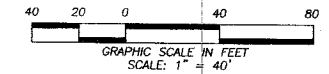
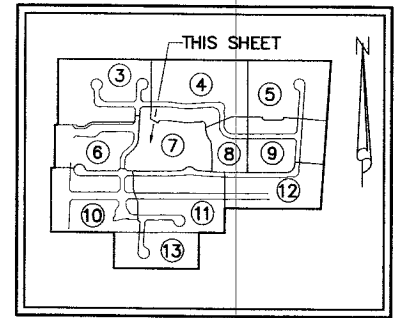
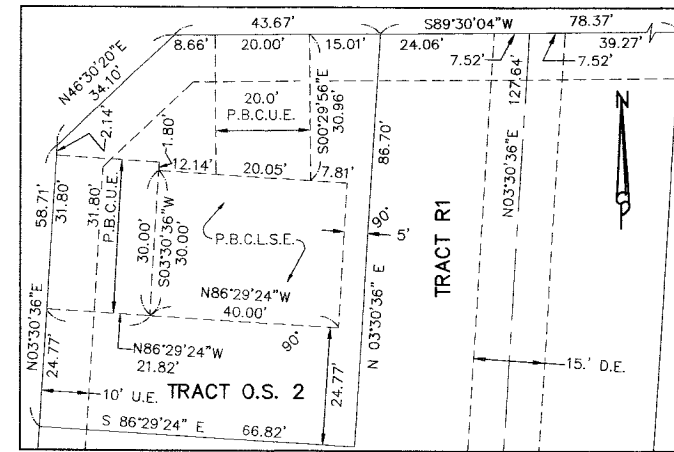
THIS INSTRUMENT WAS FILED FOR RECORD AT \_\_\_\_\_ M. THIS \_\_\_\_\_ DAY OF \_\_\_\_\_ 20\_\_\_\_ AND DULY RECORDED IN: PLAT BOOK \_\_\_\_\_ ON PAGE \_\_\_\_\_ SHARON R. BOCK CLERK & COMPTROLLER PALM BEACH COUNTY BY: \_\_\_\_\_ DEPUTY CLERK

### COORDINATE TRANSLATION DATA

- COORDINATES SHOWN ARE GRID
- DATUM = NAD 83 1990 ADJUSTMENT
- ZONE = FLORIDA EAST
- LINEAR UNIT = US SURVEY FEET
- COORDINATE SYSTEM 1983 STATE PLANE TRANSVERSE MERCATOR PROJECTION
- GROUND DISTANCE X SCALE FACTOR = GRID DISTANCE
- ALL DISTANCES ARE GROUND UNLESS OTHERWISE NOTED
- SCALE FACTOR = 1.0000329

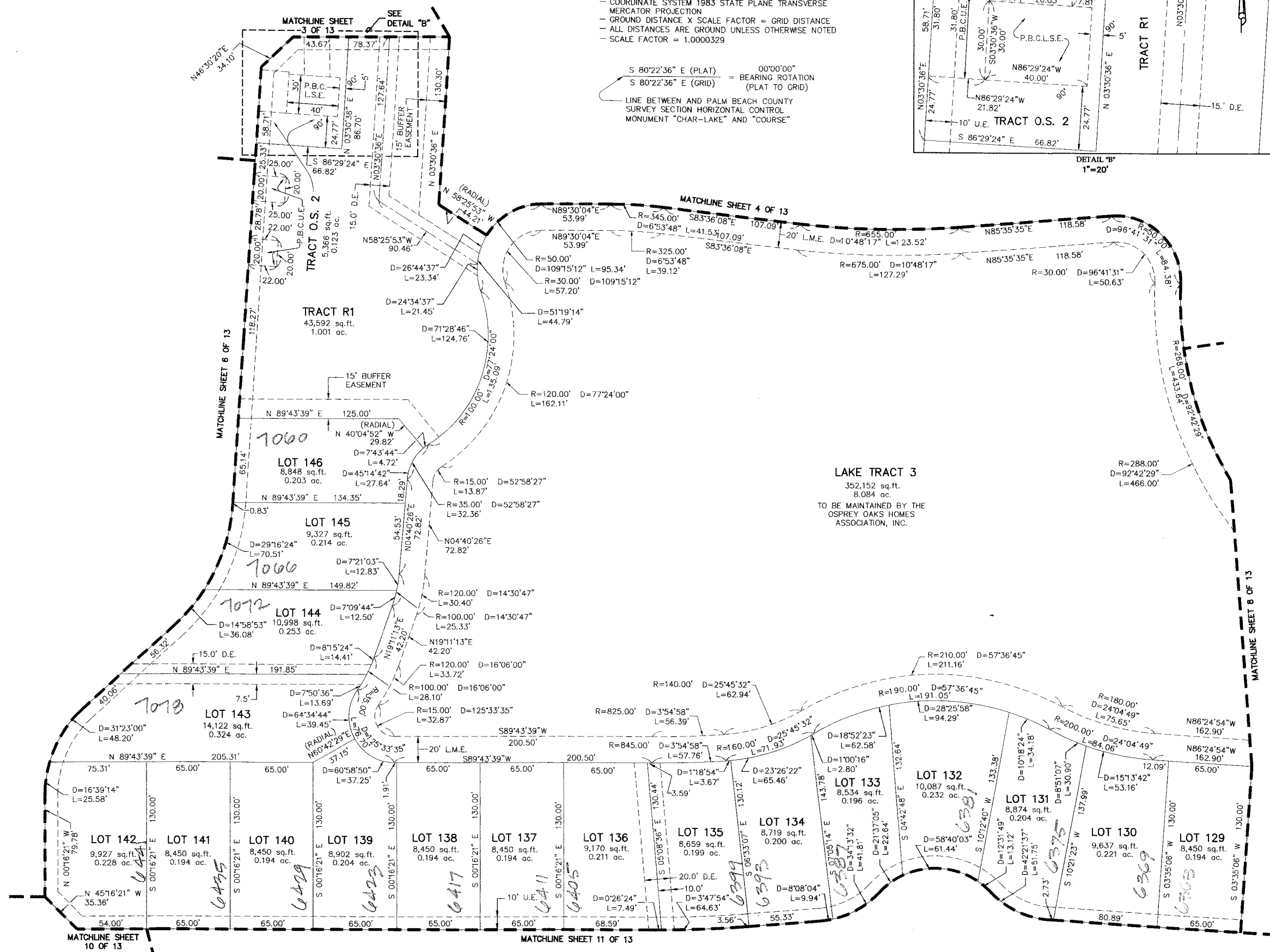
S 80°22'36" E (PLAT) = 00°00'00" BEARING ROTATION (PLAT TO GRID)  
 S 80°22'36" E (GRID)

LINE BETWEEN AND PALM BEACH COUNTY SURVEY SECTION HORIZONTAL CONTROL MONUMENT "CHAR-LAKE" AND "COURSE"



THIS INSTRUMENT WAS PREPARED BY: DAVID A. BOWER, P.S.M., #5888 IN THE OFFICES OF DENNIS J. LEAVY AND ASSOCIATES, INC. CERTIFICATE OF AUTHORIZATION NUMBER: LB6599 460 BUSINESS PARK WAY, SUITE B ROYAL PALM BEACH, FLORIDA 33411 PHONE: (561) 753 - 0650 FAX: (561) 753 - 0290

- ### LEGEND
- D = CENTRAL ANGLE
  - L = ARC LENGTH
  - L.A.E. = LIMITED ACCESS EASEMENT
  - LB = LICENSED BUSINESS
  - L.M.A.E. = LAKE MAINTENANCE ACCESS EASEMENT
  - L.M.E. = LAKE MAINTENANCE EASEMENT
  - O.R.B. = OFFICIAL RECORD BOOK
  - P.B. = PLAT BOOK
  - P.B.C.R. = PALM BEACH COUNTY RECORDS
  - P.B.C.L.S.E. = PALM BEACH COUNTY LIFT STATION EASEMENT
  - P.B.C.U.E. = PALM BEACH COUNTY UTILITY EASEMENT
  - P.C.N. = PARCEL CONTROL NUMBER
  - PG. = PAGE(S)
  - P.R.M. = PERMANENT REFERENCE MONUMENT
  - R = RADIUS
  - U.E. = UTILITY EASEMENT
  - (T) = TOTAL
  - = PERMANENT REFERENCE MONUMENT (P.R.M.) 4" x 4" CONCRETE MONUMENT WITH P.K. NAIL IN BRASS DISC STAMPED "PRM LB 6599"
  - = (P.C.P.) SET MAG NAIL IN BRASS DISC LB 6599



**LAKE TRACT 3**  
 352,152 sq. ft.  
 8.084 ac.  
 TO BE MAINTAINED BY THE OSPREY OAKS HOMES ASSOCIATION, INC.

SHEET 7 OF 13

**DENNIS J. LEAVY & ASSOCIATES, INC.**  
 LAND SURVEYORS AND MAPPERS

460 BUSINESS PARK WAY • SUITE B • ROYAL PALM BEACH, FL • 33411  
 PHONE: (561) 753-0650 FAX: (561) 753-0290

SCALE: AS SHOWN CHECKED BY: DJB DATE: 01/04/11  
 DRAWN BY: RRM JOB NO.: 10-062-001