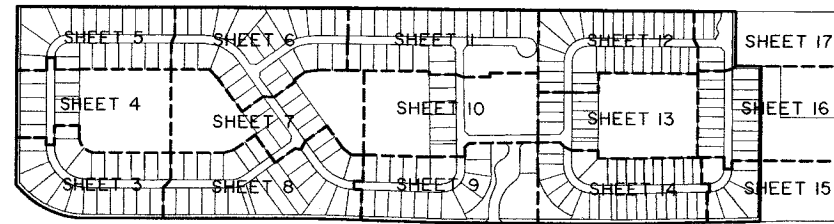


CASTELLINA

LYING IN SECTION 13, TOWNSHIP 44 SOUTH, RANGE 41 EAST, VILLAGE OF WELLINGTON,
PALM BEACH COUNTY, FLORIDA. BEING A REPLAT OF A PORTION OF LANIER PROPERTY AS
RECORDED IN PLAT BOOK 108, PAGES 75 THROUGH 91, PUBLIC RECORDS OF PALM BEACH
COUNTY, FLORIDA.

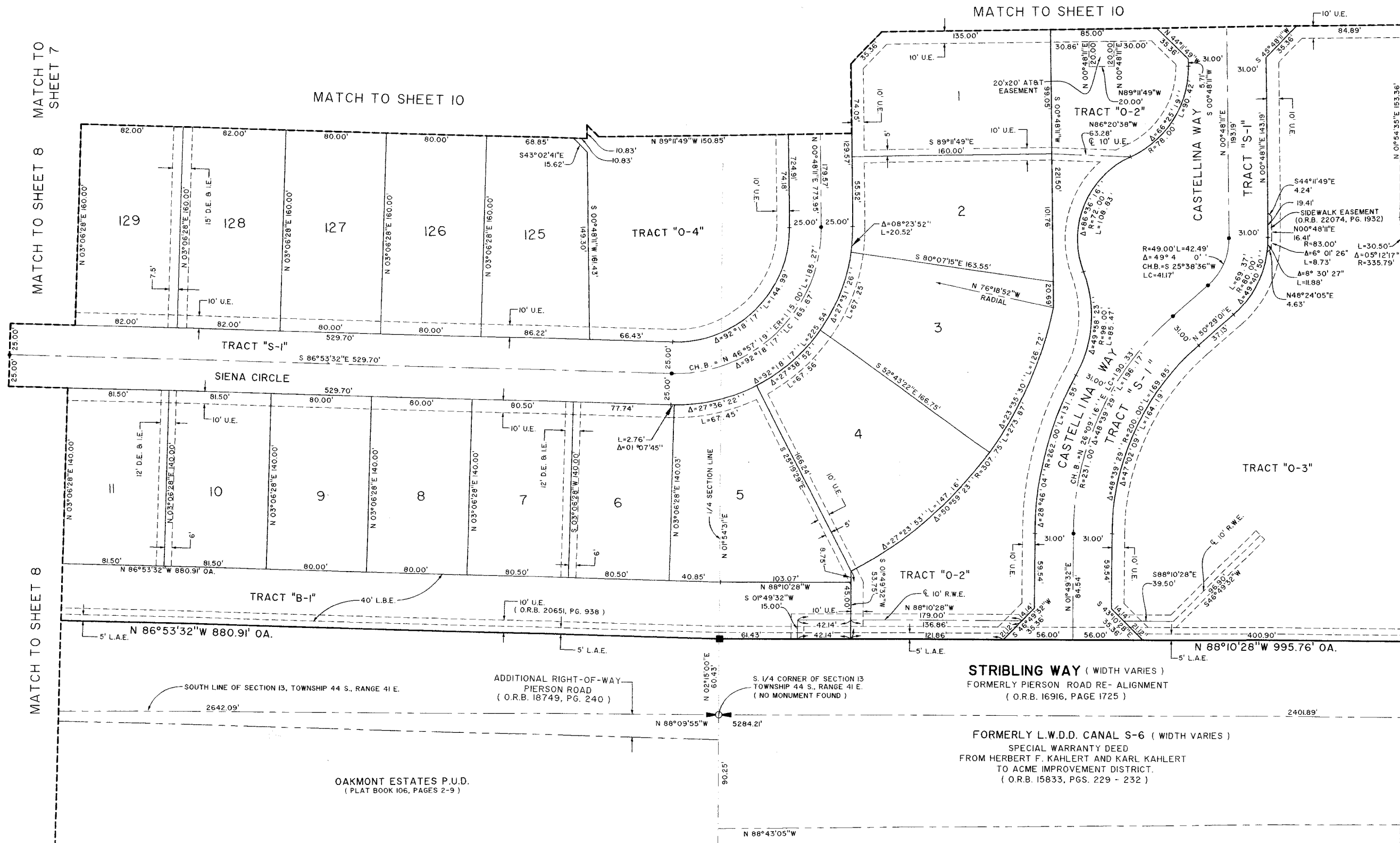
SHEET 9 OF 17

FEBRUARY, 2012



KEY MAP
NOT TO SCALE

COUNTY OF PALM BEACH)
STATE OF FLORIDA) SS
THIS PLAT WAS FILED FOR RECORD
AT .M. THIS
DAY OF ., 2012, AND
DULY RECORDED IN PLAT BOOK NO.
ON PAGE THRU
SHARON R. BOCK,
CLERK AND COMPTROLLER
BY: , D.C.



MATCH TO SHEET 7

MATCH TO SHEET 8

MATCH TO SHEET 8

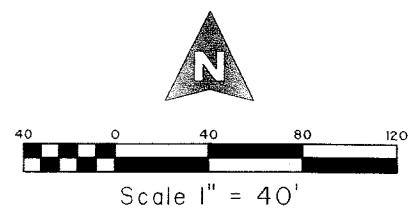
MATCH TO SHEET 10

MATCH TO SHEET 10

MATCH TO SHEET 13

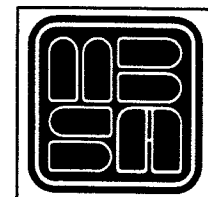
MATCH TO SHEET 14

MATCH TO SHEET 14



PALM BEACH FARMS COMPANY PLAT NO. 3
BLOCK 26, TRACT 4
(PLAT BOOK 2, PAGES 45 - 54)

SHEET 9 OF 17



MICHAEL B. SCHORAH & ASSOCIATES, INC.
1850 FOREST HILL BLVD., SUITE 208
WEST PALM BEACH, FLORIDA 33406
TEL. (561) 988-0080 FAX. (561) 642-9726 LBF 2438

CASTELLINA