

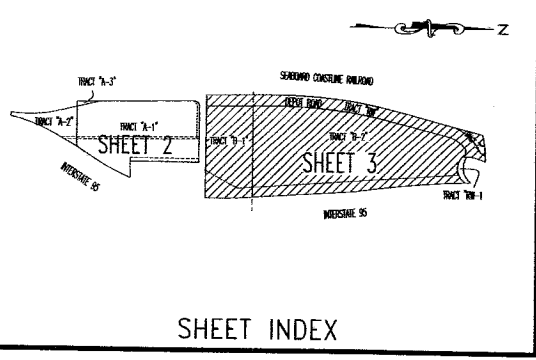
COUNTY OF PALM BEACH
STATE OF FLORIDA
THIS PLAT WAS FILED FOR RECORD AT _____ M. THIS _____ DAY OF _____ A.D. 2011 AND DULY RECORDED IN PLAT BOOK _____ ON PAGES THRU _____
SHARON R. BOCK
CLERK AND COMPTROLLER
BY: _____ DC

HISTORIC DEPOT SQUARE

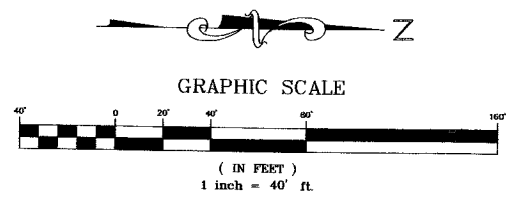
BEING A REPLAT OF PART OF SECTION 18, TOWNSHIP 46 SOUTH, RANGE 43 EAST AND ALL OF THE PLAT OF MACK INDUSTRIES-DELRAY PLAT BOOK 43, PAGE 138, PUBLIC RECORDS OF PALM BEACH COUNTY, FLORIDA CITY OF DELRAY BEACH, PALM BEACH COUNTY, FLORIDA, 2011

SHEET 3 OF 3

THIS INSTRUMENT WAS PREPARED BY ERNEST W. DUNCAN IN THE OFFICE OF BASELINE ENGINEERING AND LAND SURVEYING INC.
1400 N.W. 1st COURT, BOCA RATON, FL. 33432 (561) 417-0700



SHEET INDEX

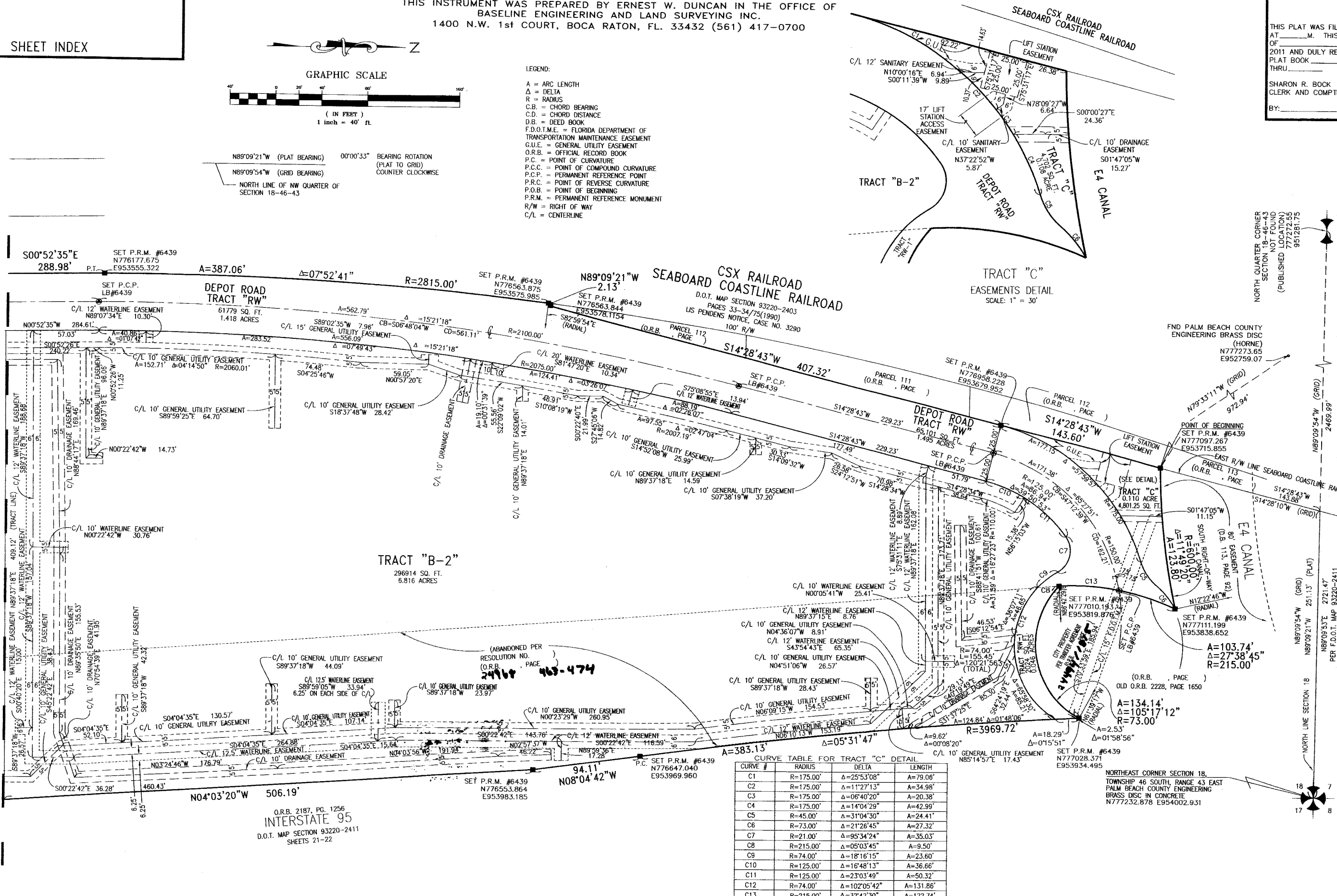


$N89^{\circ}09'21''W$ (PLAT BEARING) $00^{\circ}00'33''$ BEARING ROTATION (PLAT TO GRID) COUNTER CLOCKWISE
 $N89^{\circ}09'54''W$ (GRID BEARING)
NORTH LINE OF NW QUARTER OF SECTION 18-46-43

LEGEND:

- A = ARC LENGTH
- Δ = DELTA
- R = RADIUS
- C.B. = CHORD BEARING
- C.D. = CHORD DISTANCE
- D.B. = DEED BOOK
- F.D.O.T.M.E. = FLORIDA DEPARTMENT OF TRANSPORTATION MAINTENANCE EASEMENT
- G.U.E. = GENERAL UTILITY EASEMENT
- O.R.B. = OFFICIAL RECORD BOOK
- P.C. = POINT OF CURVATURE
- P.C.C. = POINT OF COMPOUND CURVATURE
- P.C.P. = PERMANENT REFERENCE POINT
- P.R.C. = POINT OF REVERSE CURVATURE
- P.O.B. = POINT OF BEGINNING
- P.R.M. = PERMANENT REFERENCE MONUMENT
- R/W = RIGHT OF WAY
- C/L = CENTERLINE

(SEE SHEET 2 OF 3)
MATCH LINE



CURVE TABLE FOR TRACT "C" DETAIL

CURVE #	RADIUS	DELTA	LENGTH
C1	R=175.00'	Δ=25°53'08"	A=79.06'
C2	R=175.00'	Δ=11°27'13"	A=34.98'
C3	R=175.00'	Δ=06°40'20"	A=20.38'
C4	R=175.00'	Δ=14°04'29"	A=42.99'
C5	R=45.00'	Δ=31°04'30"	A=24.41'
C6	R=73.00'	Δ=21°26'45"	A=27.32'
C7	R=21.00'	Δ=95°34'24"	A=35.03'
C8	R=215.00'	Δ=05°03'45"	A=9.50'
C9	R=74.00'	Δ=18°16'15"	A=23.60'
C10	R=125.00'	Δ=16°48'13"	A=36.66'
C11	R=125.00'	Δ=23°03'49"	A=50.32'
C12	R=74.00'	Δ=102°05'42"	A=131.86'
C13	R=215.00'	Δ=32°42'30"	A=122.74'

NORTH QUARTER CORNER SECTION 18-46-43
NOT FOUND
(PUBLISHED LOCATION)
95128175

NORTH LINE SECTION 18
N89°09'21''W 251.13' (PLAT)
N89°09'51''E 2721.47'
PER F.D.O.T. MAP 93220-2411

NORTHEAST CORNER SECTION 18,
TOWNSHIP 46 SOUTH, RANGE 43 EAST
PALM BEACH COUNTY ENGINEERING
BRASS DISC IN CONCRETE
N777232.878 E954002.931