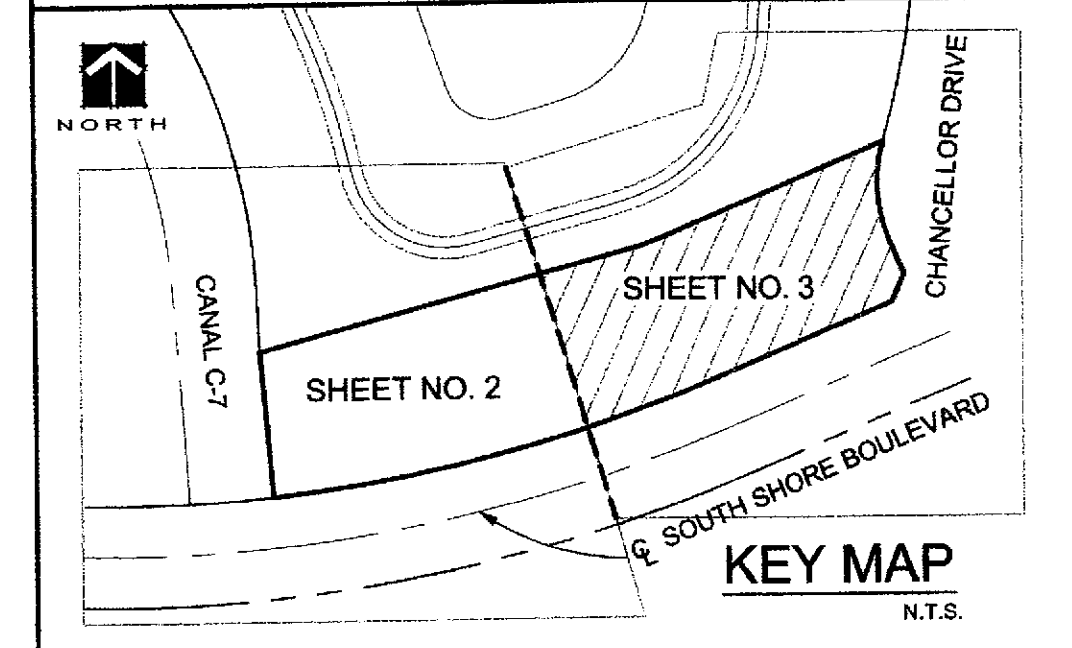
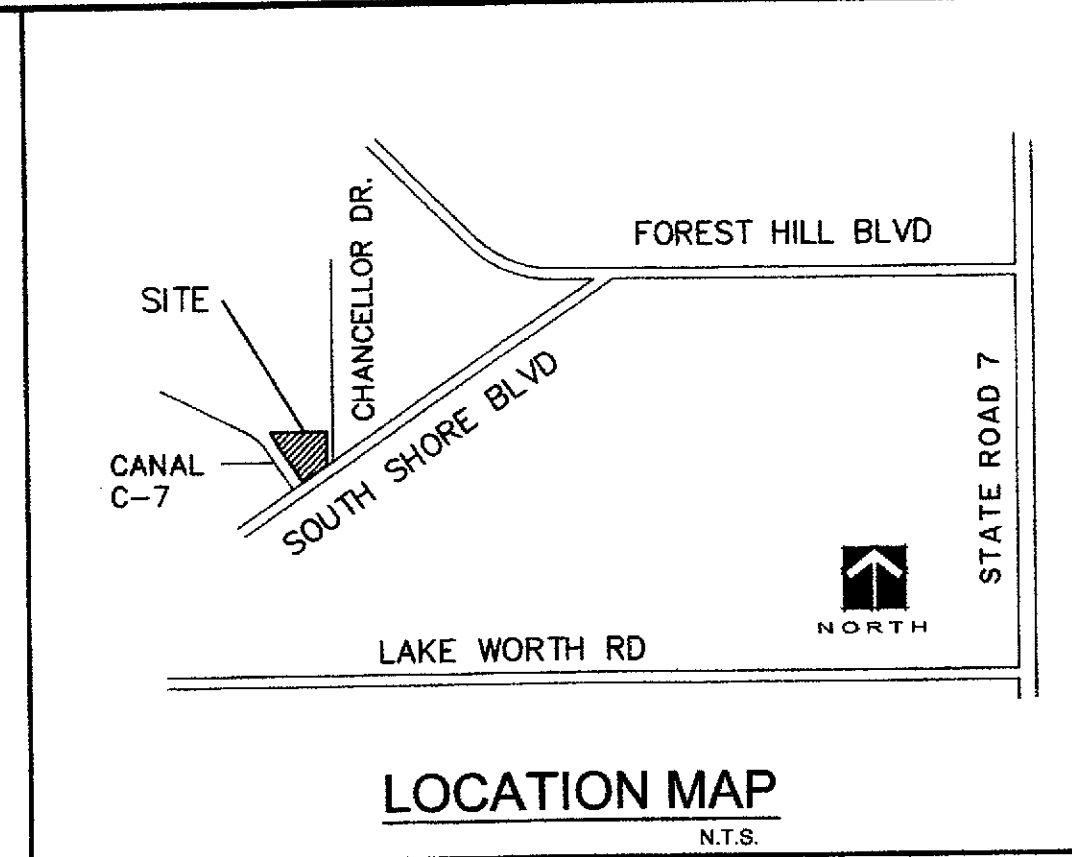
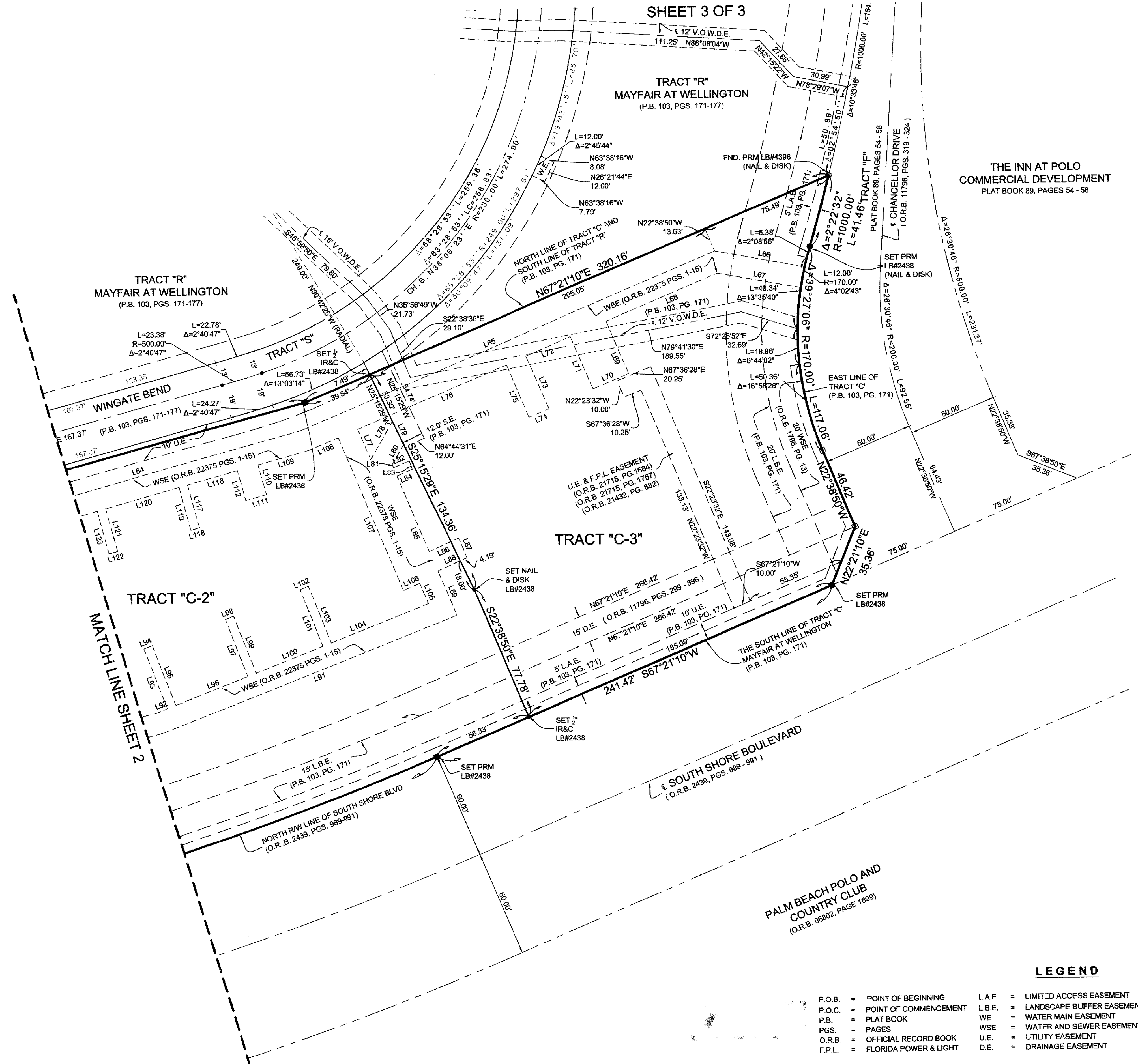


REPLAT OF TRACT "C" MAYFAIR AT WELLINGTON

BEING A REPLAT OF TRACT "C", MAYFAIR AT WELLINGTON, AS RECORDED IN PLAT BOOK 103, PAGES 171 THROUGH 177, PUBLIC RECORDS OF PALM BEACH COUNTY, FLORIDA AND LYING IN SECTION 15, TOWNSHIP 44 SOUTH RANGE 41 EAST, VILLAGE OF WELLINGTON, PALM BEACH COUNTY, FLORIDA.

SEPTEMBER 2011

SHEET 3 OF 3



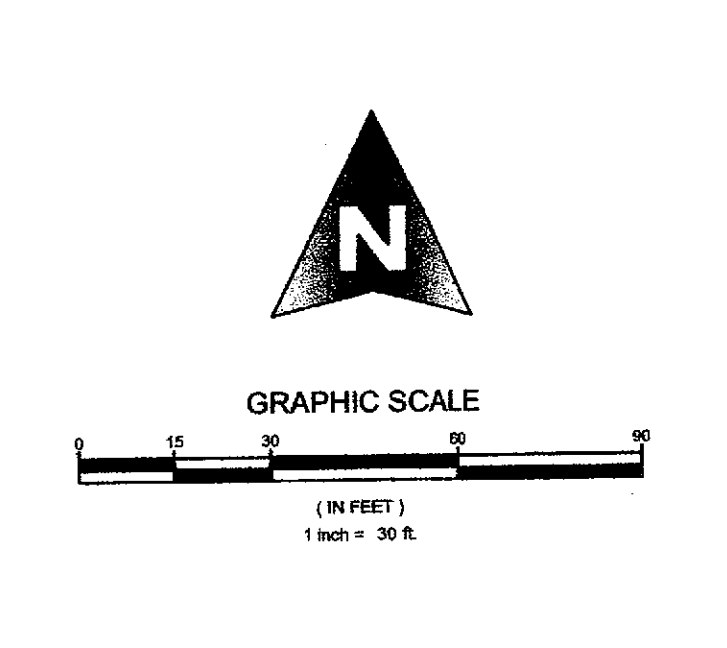
153

COUNTY OF PALM BEACH)
STATE OF FLORIDA) SS

THIS PLAT WAS FILED FOR RECORD AT _____ M. THIS _____ DAY OF _____ 20____ AND DULY RECORDED IN PLAT BOOK NO. _____ ON PAGE _____ THRU _____

SHARON R. BOCK,
CLERK AND COMPTROLLER

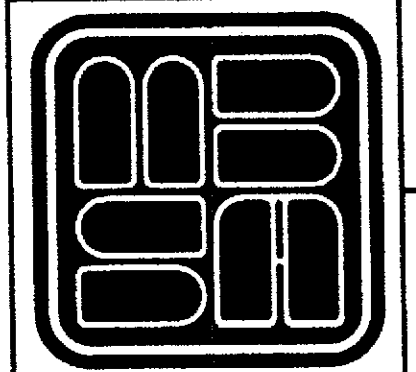
BY: _____, D.C.



LINE TABLE			LINE TABLE			LINE TABLE		
LINE #	LENGTH	DIRECTION	LINE #	LENGTH	DIRECTION	LINE #	LENGTH	DIRECTION
L65	252.86'	N67° 21' 10"E	L85	45.91'	S22° 38' 50"E	L106	10.00'	S67° 21' 10"W
L66	51.17'	S79° 18' 54"E	L86	18.11'	N66° 09' 26"E	L107	93.23'	N22° 38' 50"W
L67	47.58'	N79° 18' 54"W	L87	12.01'	S21° 57' 04"E	L108	18.04'	S67° 21' 10"W
L68	67.77'	S67° 21' 10"W	L88	17.97'	S66° 09' 26"W	L109	29.45'	S74° 49' 35"W
L69	31.97'	S22° 38' 50"E	L89	27.04'	S22° 38' 50"E	L110	17.35'	S15° 19' 58"E
L70	21.77'	S67° 21' 10"W	L91	177.29'	S68° 56' 18"W	L111	12.00'	S74° 49' 35"W
L71	31.97'	N22° 38' 50"W	L92	6.49'	N68° 56' 18"E	L112	17.35'	N15° 19' 58"W
L72	27.20'	S67° 21' 10"W	L93	36.00'	N21° 03' 42"W	L116	28.94'	S74° 49' 35"W
L73	32.35'	S22° 38' 50"E	L94	5.00'	N68° 56' 18"E	L117	24.89'	S14° 57' 32"E
L74	12.00'	S67° 21' 10"W	L95	36.00'	S21° 03' 42"E	L118	5.00'	S75° 02' 28"W
L75	32.35'	N22° 38' 50"W	L96	43.35'	N68° 56' 18"E	L119	24.88'	N14° 57' 32"W
L76	91.27'	S67° 21' 10"W	L97	34.30'	N21° 03' 42"W	L120	43.00'	S74° 49' 35"W
L77	18.67'	S22° 38' 50"E	L98	5.00'	N68° 56' 18"E	L121	24.71'	S14° 57' 32"E
L78	24.89'	N30° 04' 08"E	L99	34.30'	S21° 03' 42"E	L122	5.00'	S75° 02' 28"W
L79	14.59'	S25° 15' 29"E	L100	40.25'	N68° 56' 18"E	L123	24.70'	N14° 57' 32"W
L80	13.16'	S30° 04' 08"W	L101	34.19'	N21° 03' 42"W			
L81	1.84'	S22° 38' 50"E	L102	5.00'	N68° 56' 18"E			
L82	9.50'	N67° 21' 10"E	L103	34.19'	S21° 03' 42"E			
L83	5.00'	S22° 38' 50"E	L104	59.12'	N68° 56' 18"E			
L84	9.50'	S67° 21' 10"W	L105	12.37'	N22° 38' 50"W			

LEGEND

- P.O.B. = POINT OF BEGINNING
- P.O.C. = POINT OF COMMENCEMENT
- P.B. = PLAT BOOK
- PGS. = PAGES
- O.R.B. = OFFICIAL RECORD BOOK
- F.P.L. = FLORIDA POWER & LIGHT
- L.A.E. = LIMITED ACCESS EASEMENT
- L.B.E. = LANDSCAPE BUFFER EASEMENT
- WE = WATER MAIN EASEMENT
- WSE = WATER AND SEWER EASEMENT
- U.E. = UTILITY EASEMENT
- D.E. = DRAINAGE EASEMENT
- = FND. 4"x4" PRM LB#4396
- = SET 4"x4" PRM LB#2438
- = FND. SURVEY NAIL & DISK LB#4396
- = SET SURVEY NAIL & DISK LB#2438 UNLESS OTHERWISE NOTED



SHEET 3 OF 3

MICHAEL B. SCHORAH & ASSOCIATES, INC.
1850 FOREST HILL BLVD., SUITE 206
WEST PALM BEACH, FLORIDA 33406
E# 2438 TEL. (561) 968-0080 FAX (561) 642-9726 LB# 2438

**REPLAT OF TRACT "C"
MAYFAIR AT WELLINGTON**