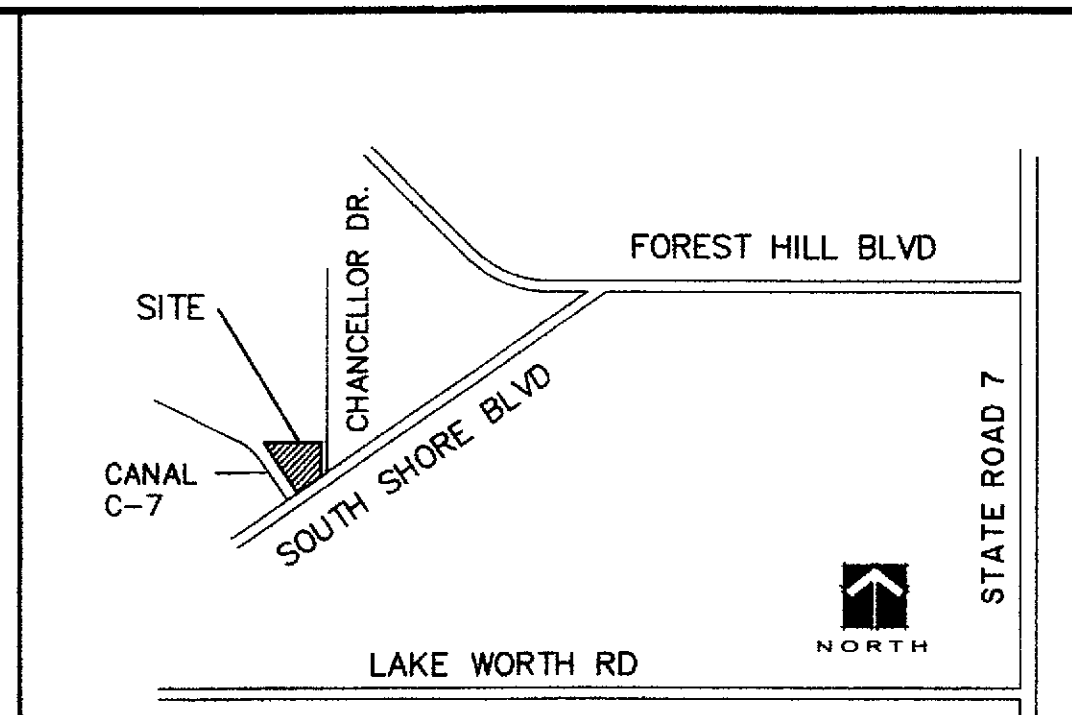


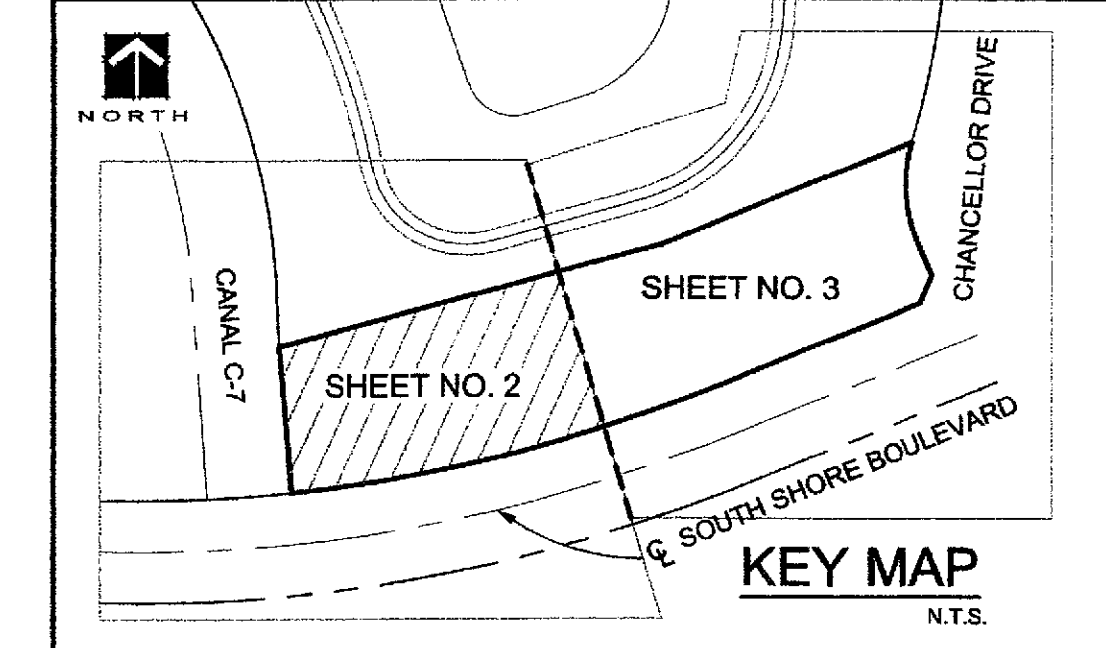
REPLAT OF TRACT "C" MAYFAIR AT WELLINGTON

BEING A REPLAT OF TRACT "C", MAYFAIR AT WELLINGTON, AS RECORDED IN PLAT BOOK 103, PAGES 171 THROUGH 177, PUBLIC RECORDS OF PALM BEACH COUNTY, FLORIDA AND LYING IN SECTION 15, TOWNSHIP 44 SOUTH RANGE 41 EAST, VILLAGE OF WELLINGTON, PALM BEACH COUNTY, FLORIDA.

SEPTEMBER 2011
SHEET 2 OF 3



LOCATION MAP
N.T.S.



KEY MAP
N.T.S.

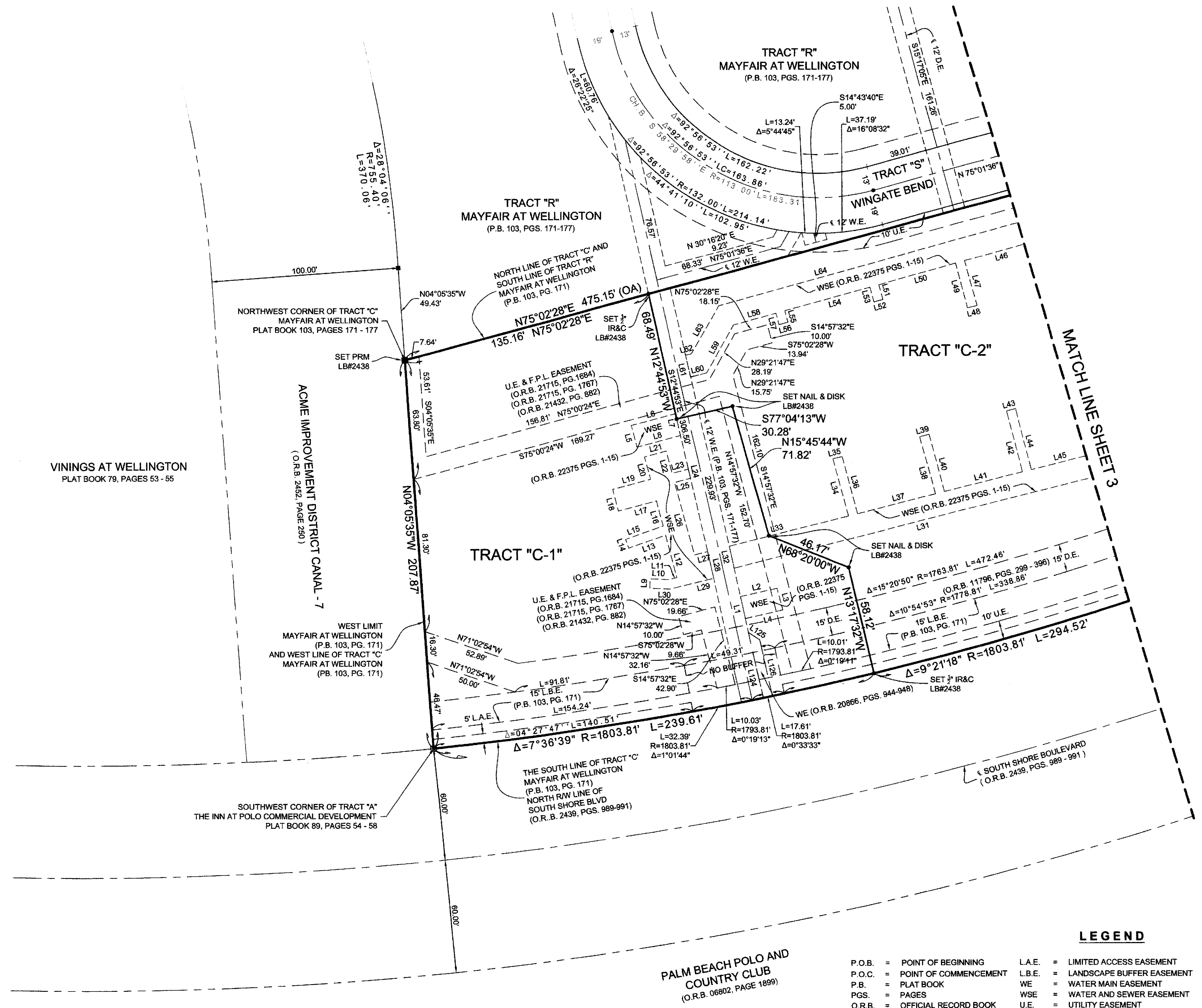
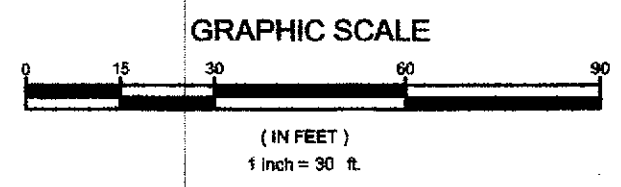
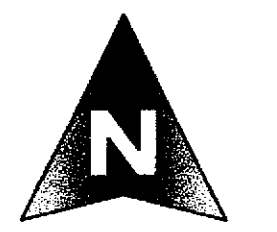
152

COUNTY OF PALM BEACH)
STATE OF FLORIDA) SS

THIS PLAT WAS FILED FOR RECORD AT _____ M. THIS _____ DAY OF _____, 20____, AND DULY RECORDED IN PLAT BOOK NO. _____ ON PAGE _____ THRU _____

SHARON R. BOCK,
CLERK AND COMPTROLLER

BY: _____, D.C.



LINE #	LENGTH	DIRECTION
L1	12.00'	N12° 44' 53"W
L2	20.21'	N77° 35' 58"E
L3	12.00'	S14° 42' 44"E
L4	20.62'	S77° 34' 20"W
L5	12.00'	S14° 59' 36"E
L6	24.44'	S75° 00' 24"W
L7	12.01'	N12° 44' 53"W
L8	23.97'	N75° 00' 24"E
L9	5.00'	S02° 14' 34"W
L10	10.13'	N87° 45' 26"W
L11	4.32'	S76° 04' 43"W
L12	23.39'	S14° 57' 32"E
L13	20.90'	N70° 41' 57"E
L14	5.00'	S19° 10' 24"E
L15	21.27'	S70° 41' 57"W
L16	13.85'	S14° 57' 32"E
L17	21.04'	N75° 02' 28"E
L18	12.00'	S14° 57' 32"E
L19	21.04'	S75° 02' 28"W
L20	12.31'	S14° 57' 32"E
L21	12.00'	S75° 02' 28"W
L22	12.31'	N14° 57' 32"W
L23	8.84'	S75° 02' 28"W

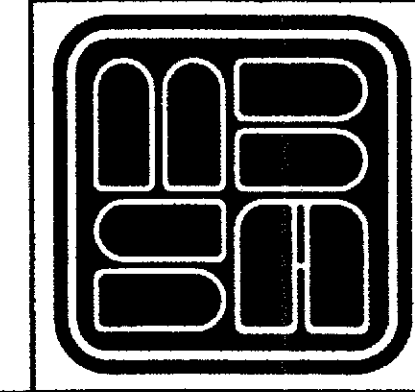
LINE #	LENGTH	DIRECTION
L24	5.00'	N12° 44' 53"W
L25	8.65'	N75° 02' 28"E
L26	39.96'	N14° 57' 32"W
L27	7.10'	S76° 04' 43"W
L28	14.50'	N12° 44' 53"W
L29	23.66'	N76° 04' 43"E
L30	10.84'	S87° 45' 26"E
L31	207.64'	S76° 04' 43"W
L32	12.00'	N12° 44' 53"W
L33	66.09'	N76° 04' 43"E
L34	31.58'	N14° 57' 16"W
L35	5.00'	N76° 26' 15"E
L36	31.55'	S14° 57' 16"E
L37	43.08'	N76° 04' 43"E
L38	31.49'	N14° 57' 16"W
L39	5.00'	N74° 45' 18"E
L40	31.60'	S14° 57' 16"E
L41	42.90'	N76° 04' 43"E
L42	33.56'	N14° 57' 16"W
L43	5.00'	N75° 02' 44"E
L44	33.65'	S14° 57' 16"E
L45	39.57'	N76° 04' 43"E
L46	43.00'	S74° 49' 35"W

LINE #	LENGTH	DIRECTION
L47	24.71'	S14° 57' 32"E
L48	5.00'	S75° 02' 28"W
L49	24.70'	N14° 57' 32"W
L50	42.97'	S74° 49' 35"W
L51	8.11'	S14° 57' 32"E
L52	5.00'	S75° 02' 28"W
L53	8.09'	N14° 57' 32"W
L54	47.09'	S74° 49' 35"W
L55	6.40'	S14° 57' 32"E
L56	5.00'	S75° 02' 28"W
L57	6.38'	N14° 57' 32"W
L58	23.82'	S74° 49' 35"W
L59	29.41'	S29° 21' 47"W
L60	8.58'	S75° 01' 36"W
L61	12.01'	N12° 44' 53"W
L62	3.06'	N75° 01' 36"E
L63	29.39'	N29° 21' 47"E
L64	299.52'	N74° 49' 35"E
L124	35.91'	N12° 44' 53"W
L125	7.17'	S86° 56' 00"E
L126	30.88'	S12° 44' 53"E

LEGEND

- P.O.B. = POINT OF BEGINNING
- P.O.C. = POINT OF COMMENCEMENT
- P.B. = PLAT BOOK
- PGS. = PAGES
- O.R.B. = OFFICIAL RECORD BOOK
- F.P.L. = FLORIDA POWER & LIGHT
- L.A.E. = LIMITED ACCESS EASEMENT
- L.B.E. = LANDSCAPE BUFFER EASEMENT
- WE = WATER MAIN EASEMENT
- WSE = WATER AND SEWER EASEMENT
- U.E. = UTILITY EASEMENT
- D.E. = DRAINAGE EASEMENT

- = FND. 4"x4" PRM LB#4396
- = SET 4"x4" PRM LB#2438
- = FND. SURVEY NAIL & DISK LB#4396
- = SET SURVEY NAIL & DISK LB#2438
- = UNLESS OTHERWISE NOTED



MICHAEL B. SCHORAH & ASSOCIATES, INC.
1850 FOREST HILL BLVD., SUITE 206
WEST PALM BEACH, FLORIDA 33406
EB# 2438 TEL. (561) 968-0080 FAX. (561) 642-9726 LB# 2438

REPLAT OF TRACT "C"
MAYFAIR AT WELLINGTON

SHEET 2 OF 3