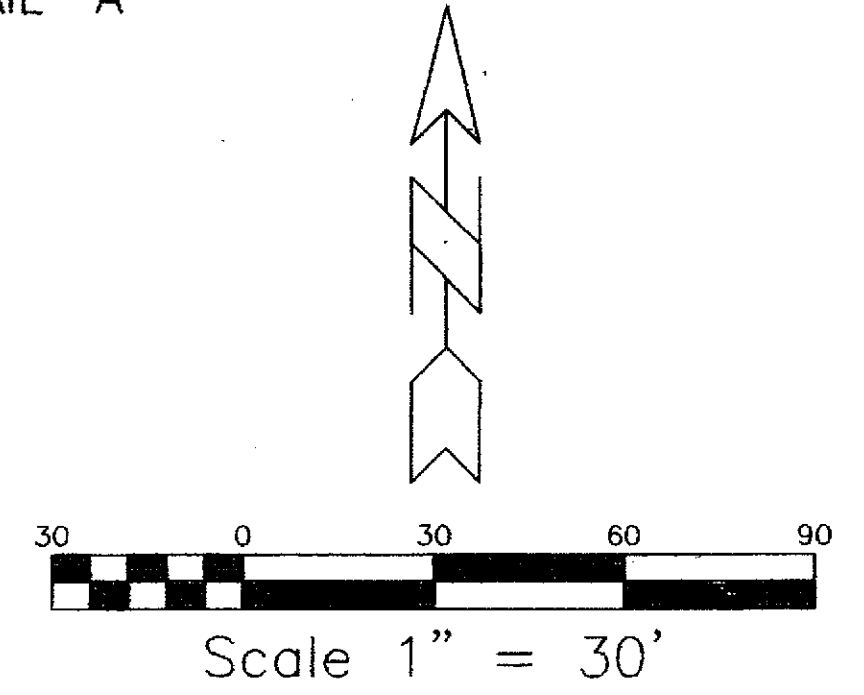
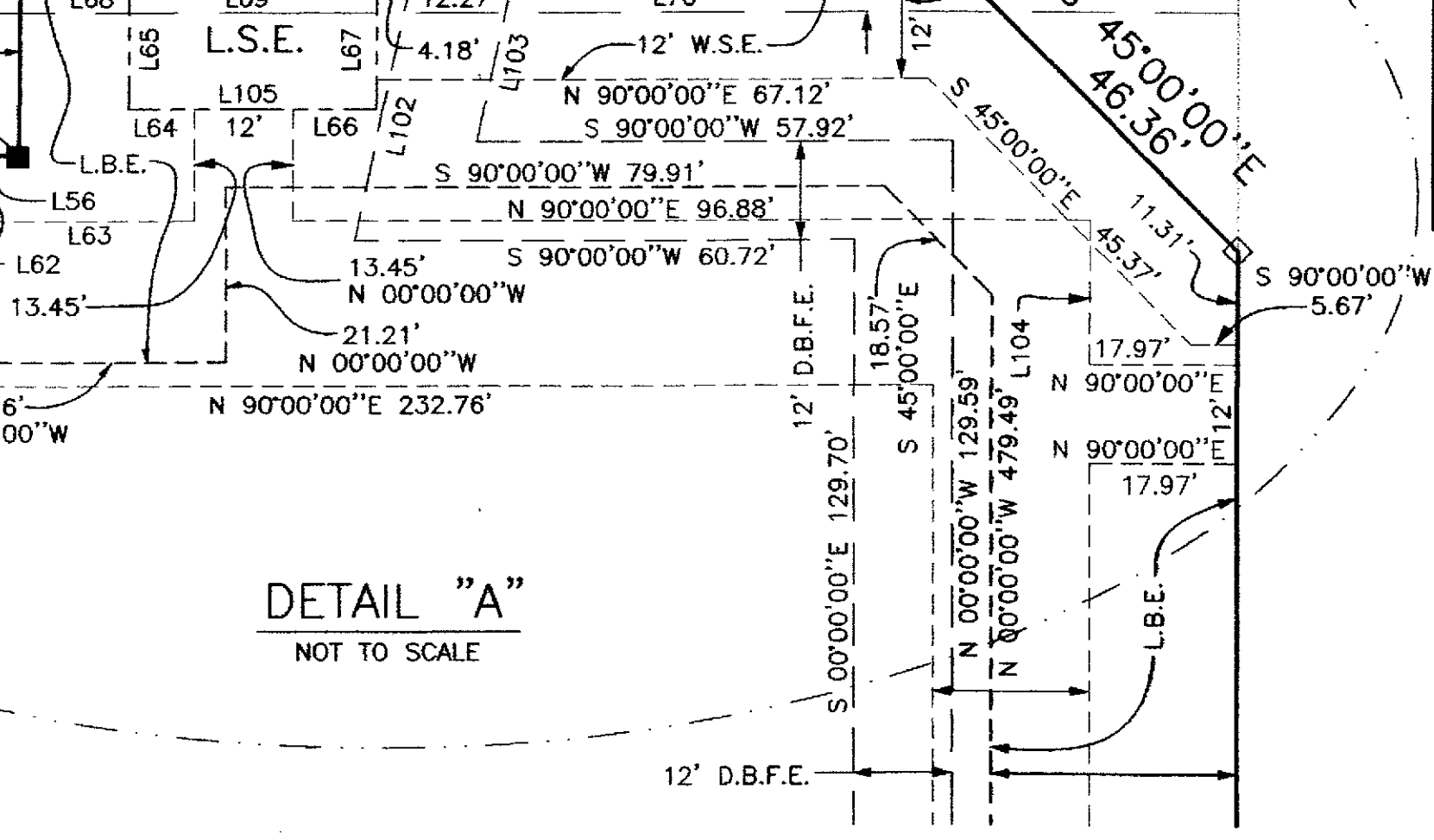
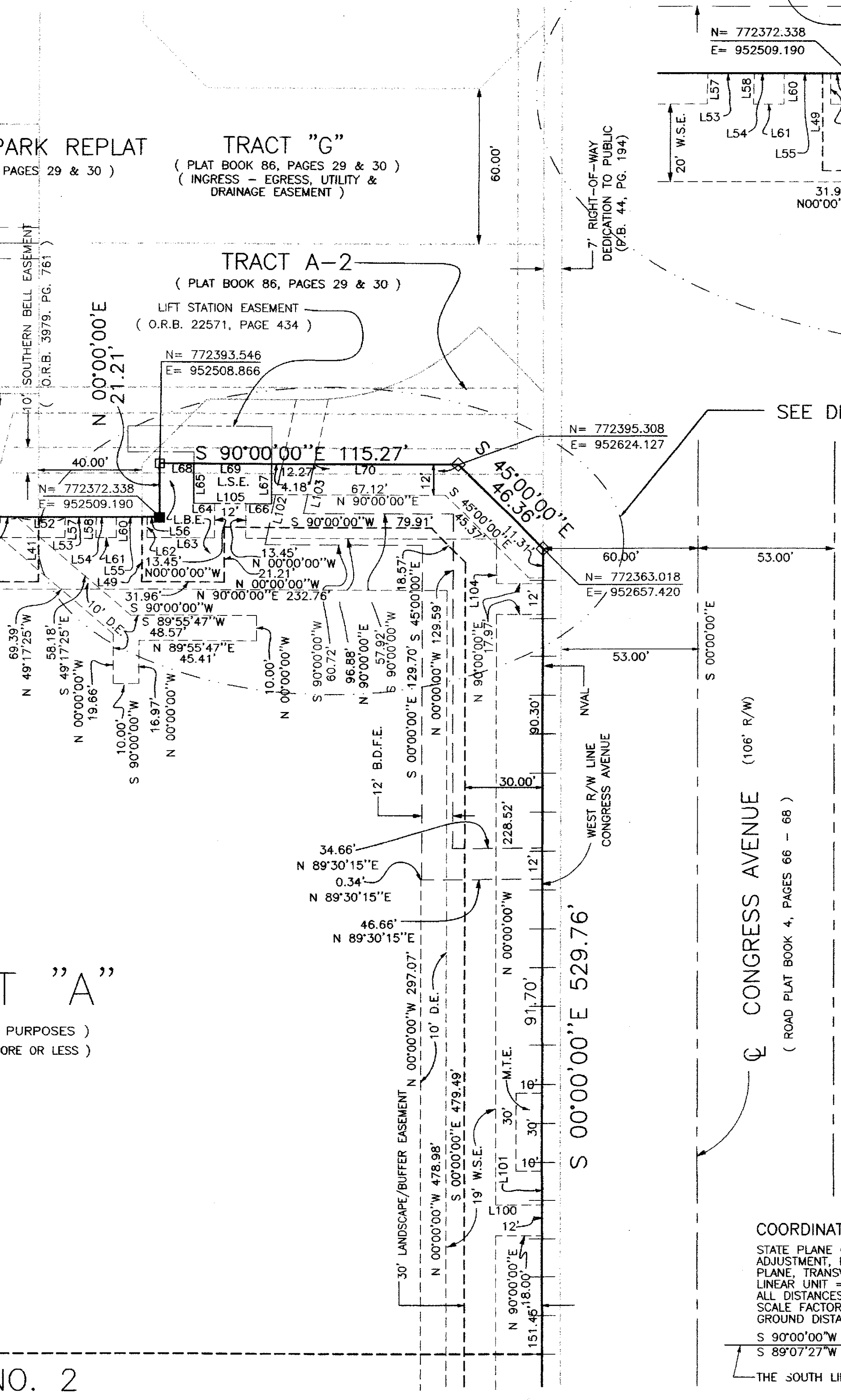
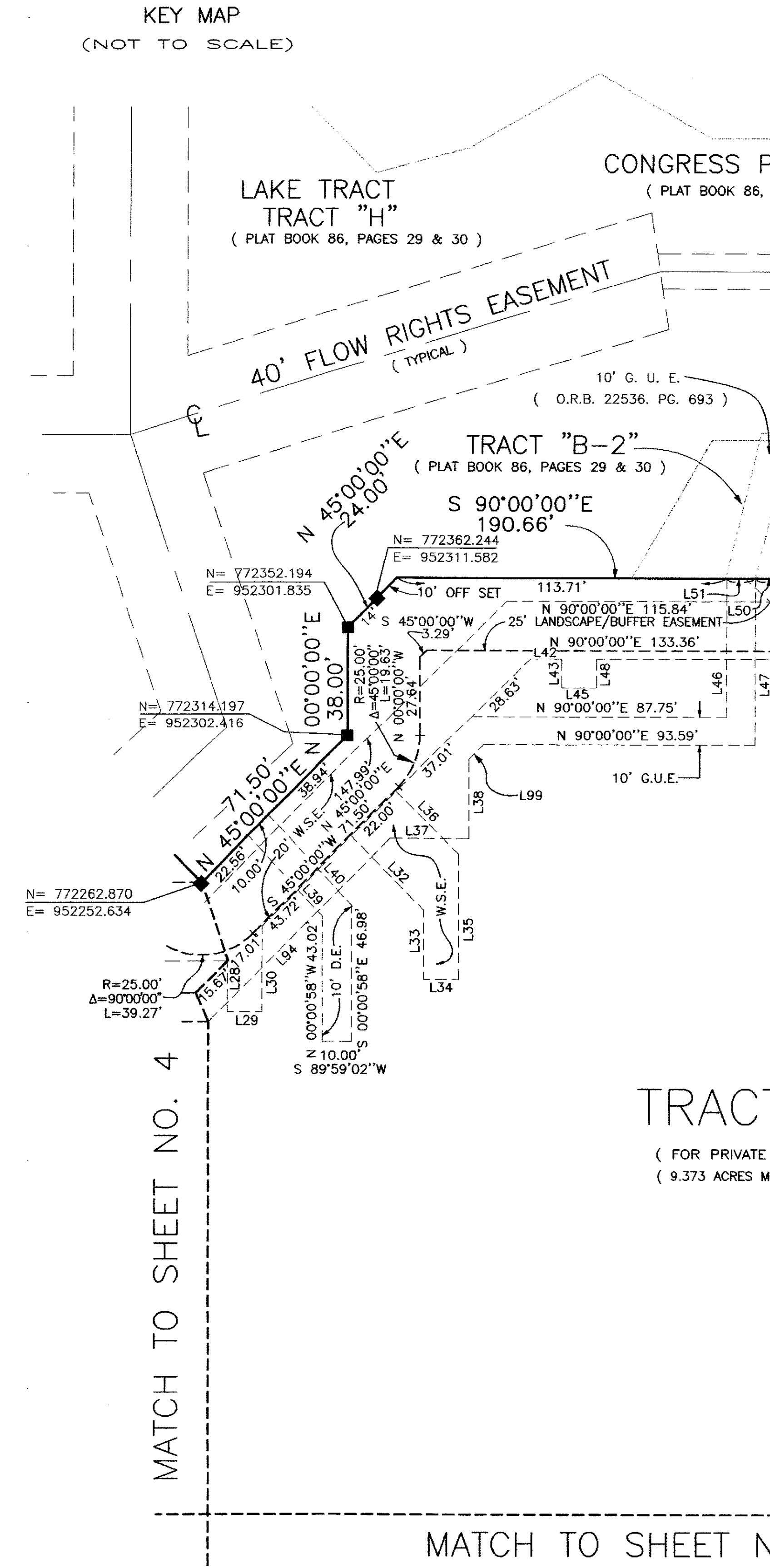


ALTA CONGRESS

BEING A REPLAT OF TRACT A-1 AND A PORTION OF TRACTS A, B, F AND E-2, CONGRESS PARK, AS RECORDED IN PLAT BOOK 44, PAGES 194 AND 195, PUBLIC RECORDS OF PALM BEACH COUNTY, FLORIDA AND LYING IN SECTION 18, TOWNSHIP 46 SOUTH RANGE 43 EAST, DELRAY BEACH, PALM BEACH COUNTY, FLORIDA.

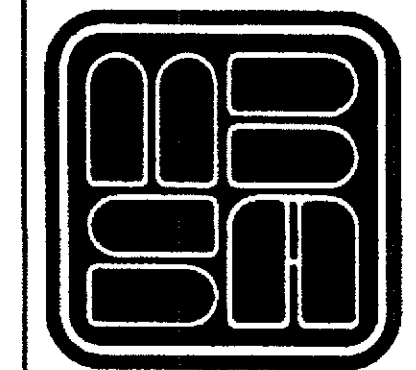
COUNTY OF PALM BEACH)
STATE OF FLORIDA) SS
THIS PLAT WAS FILED FOR RECORD AT _____ M. THIS _____ DAY OF _____ 20 _____ AND DULY RECORDED IN PLAT BOOK NO. _____ ON PAGE _____ THRU _____
SHARON R. BOCK,
CLERK AND COMPTROLLER
BY: _____ D.C.



LINE TABLE

NUMBER	DIRECTION	DISTANCE	NUMBER	DIRECTION	DISTANCE
L1	N 00°42'04"W	12.00'	L53	N 90°00'00"E	12.01'
L2	N 90°00'00"E	52.22'	L54	N 90°00'00"E	7.82'
L3	N 00°00'00"W	12.49'	L55	N 90°00'00"E	12.00'
L4	S 90°00'00"W	12.00'	L56	N 90°00'00"E	4.90'
L5	N 00°00'00"W	12.49'	L57	N 01°15'53"E	7.85'
L6	S 90°00'00"W	66.75'	L58	N 01°15'53"E	7.85'
L7	S 14°54'25"W	45.38'	L60	N 00°00'00"W	7.85'
L8	S 14°54'25"W	46.93'	L61	N 90°00'00"E	7.99'
L9	S 45°00'00"E	11.31'	L62	N 00°00'00"W	7.85'
			L63	S 90°00'00"W	26.07'
			L64	S 90°00'00"W	8.00'
			L65	N 00°00'00"W	15.60'
			L66	N 90°00'00"E	10.00'
L14	N 90°00'00"E	92.98'	L67	N 00°00'00"W	15.60'
L15	N 90°00'00"E	8.45'	L68	N 90°00'00"E	13.16'
L16	N 90°00'00"E	19.71'	L69	N 90°00'00"E	30.00'
L17	N 90°00'00"E	12.42'	L70	N 90°00'00"E	55.66'
L18	N 90°00'00"E	8.28'	L71	N 60°00'00"W	20.33'
			L72	S 60°00'00"E	20.33'
			L73	S 90°00'00"W	18.00'
L21	S 60°00'00"W	40.83'	L74	S 00°00'00"E	12.00'
			L75	N 90°00'00"E	18.00'
			L76	N 00°00'00"W	34.92'
			L77	N 00°00'00"W	10.00'
			L78	N 00°00'00"W	67.11'
L26	S 60°00'00"W	40.83'	L79	S 00°00'00"E	22.50'
L27	N 78°10'45"E	139.42'	L80	S 00°00'00"E	13.00'
L28	S 00°05'45"W	17.68'	L81	S 90°00'00"W	7.44'
L29	N 89°54'15"W	12.00'	L82	S 00°00'00"E	9.50'
L30	S 00°05'45"W	29.48'	L83	S 00°00'00"E	13.00'
L31	N 90°00'00"E	122.70'	L84	N 90°00'00"E	12.00'
L32	S 45°00'00"E	35.53'	L85	N 00°00'00"W	13.00'
L33	S 00°00'00"E	23.79'	L86	N 26°39'00"W	3.36'
L34	S 90°00'00"W	12.00'	L87	N 26°39'00"W	16.78'
L35	S 00°00'00"E	42.90'	L88	N 00°42'04"W	12.00'
L36	S 45°00'00"E	30.50'	L89	S 89°17'56"W	9.49'
L37	S 90°00'00"W	27.29'	L90	N 00°42'04"W	40.21'
L38	S 00°00'00"E	27.29'	L91	S 89°17'56"W	10.11'
L39	S 43°09'41"E	37.88'	L92	N 00°42'04"W	12.00'
L40	S 43°09'41"E	41.83'	L93	S 89°17'56"W	10.11'
L41	S 00°00'00"E	25.00'	L94	N 45°00'00"E	89.17'
L42	N 90°00'00"E	10.74'	L95	N 90°00'00"E	13.43'
L43	N 00°00'00"W	10.03'	L96	N 72°36'36"W	28.37'
L44	S 45°00'00"W	15.67'	L97	N 72°36'36"W	37.24'
L45	S 90°00'00"W	12.00'	L98	S 89°17'56"W	9.49'
L46	N 00°00'00"W	48.08'	L99	S 45°00'00"W	7.32'
L47	N 00°00'00"W	58.08'	L100	N 90°00'00"E	18.00'
L48	S 00°00'00"E	10.03'	L101	N 00°00'00"W	13.50'
L49	S 00°00'00"E	25.00'	L102	N 11°57'46"E	32.23'
L50	N 90°00'00"E	11.58'	L103	S 11°57'46"E	19.96'
L51	N 90°00'00"E	10.00'	L104	N 00°00'00"W	17.48'
L52	N 90°00'00"E	18.64'	L105	N 90°00'00"E	30.00'

COORDINATE NOTE:
STATE PLANE COORDINATES SHOWN ARE GRID DATUM, NAD 83 1990 ADJUSTMENT, FLORIDA EAST ZONE, COORDINATE SYSTEM 1983 STATE PLANE, TRANSVERSE MERCATOR PROJECTION
LINEAR UNIT = US SURVEY FEET
ALL DISTANCES ARE GROUND
SCALE FACTOR = 1.0000416
GROUND DISTANCE X SCALE FACTOR = GRID DISTANCE
S 90°00'00"W (PLAT BEARING) -00°52'33" COUNTERCLOCKWISE ROTATION
S 89°07'27"W (GRID BEARING) PLAT TO GRID
THE SOUTH LINE OF ALTA CONGRESS



MICHAEL B. SCHORAH & ASSOCIATES, INC.
1860 FOREST HILL BLVD., SUITE 206
WEST PALM BEACH, FLORIDA 33406
EB# 2438 TEL. (561) 968-0080 FAX. (561) 642-9726 LBF 2438

ALTA CONGRESS