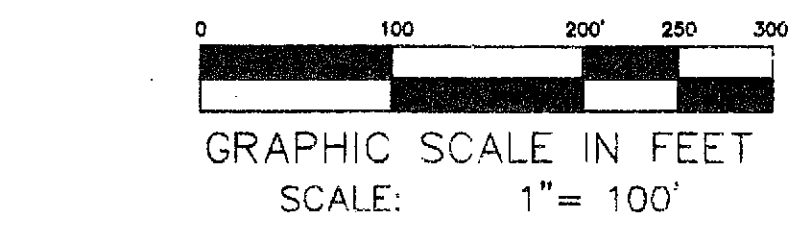
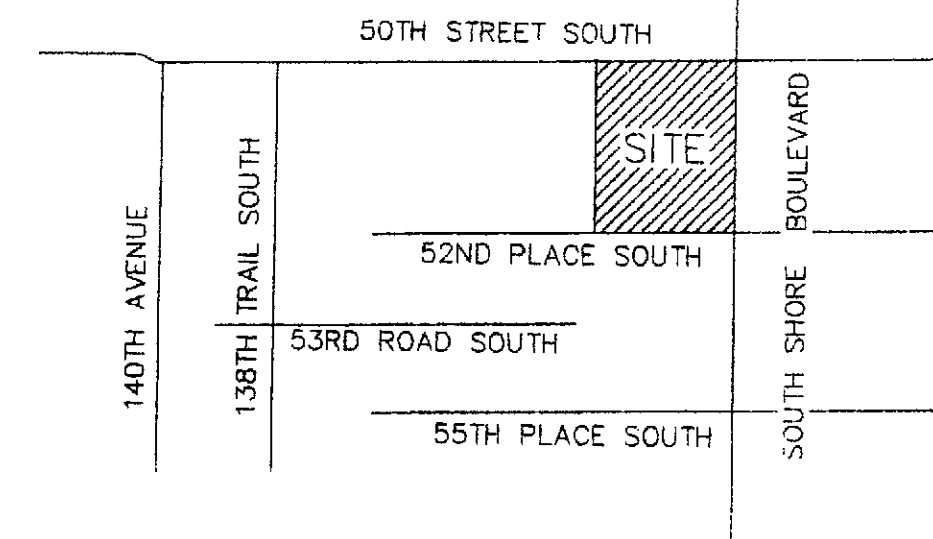
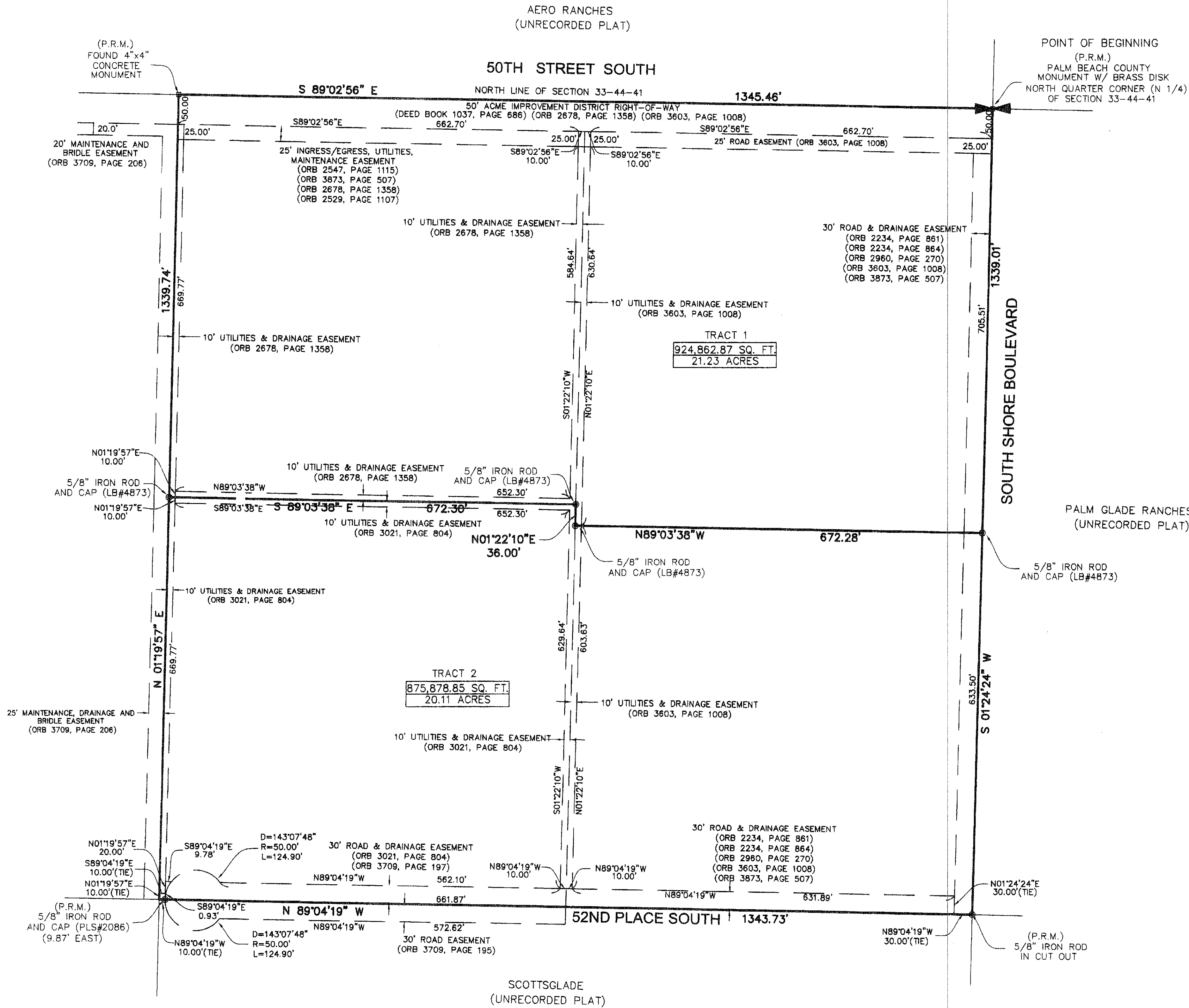


VILLA DEL LAGO FLORIDA
 BEING THE NORTHEAST ONE-QUARTER (NE¼) OF THE
 NORTHWEST ONE-QUARTER (NW¼) OF SECTION 33,
 TOWNSHIP 44 SOUTH, RANGE 41 EAST,
 VILLAGE OF WELLINGTON
 PALM BEACH COUNTY, FLORIDA
 FEBRUARY, 2010
 SHEET 2 OF 2

STATE OF FLORIDA
 COUNTY OF PALM BEACH
 This Plat was filed for record
 at _____ M. this _____ day
 of _____ 2010,
 and duly recorded in Plat Book
 No. _____ on page _____

SHARON R. BOCK,
 Clerk Circuit Court
 & Comptroller

By _____, D.C.



LEGEND

- D.B. = Deed Book
- P.B. = Plat Book
- P.B.C.R. = Palm Beach County Records
- P.C.P. = Permanent Control Point
- PRM or [] = Permanent Reference Monument
- ⊙ = 5/8" Iron Rod and Cap (LB#4873)
- V.O.W. = Village of Wellington
- O.R.B. = Official Record Book

Jack H. Casler
 JACK H. CASLER, P.S.M.
 FLORIDA CERTIFICATE NO.: LS 2731

FILE NO.
 4783
 (7-19-10)

JDC Development Services, Inc.
 EB#4873 LB#4873
 570-A Royal Palm Beach Boulevard,
 Royal Palm Beach, Florida, 33411
 Fax: (561) 790-4488 (561) 790-4471