

OLYMPIA CIVIC SITE

BEING A REPLAT OF PORTIONS OF TRACT 35 AND OF TRACTS 46 THROUGH 55, BLOCK 19, PALM BEACH FARMS COMPANY PLAT NO. 3,
 RECORDED IN PLAT BOOK 2, PAGES 45-54, PUBLIC RECORDS OF PALM BEACH COUNTY
 SITUATE IN SECTION 19, TOWNSHIP 44 SOUTH, RANGE 42 EAST
 VILLAGE OF WELLINGTON, PALM BEACH COUNTY, FLORIDA
 AUGUST, 2010

49

CENTER LINE OF A 10' WIDE FLORIDA POWER & LIGHT COMPANY UTILITY EASEMENT PER O.R.B. 19795, PAGE 1830

TANGENT	BEARING	DISTANCE
T163	S38°43'25"W	5.00'
T164	S29°30'43"W	21.58'
T165	S46°56'22"E	10.00'

CURVE	RADIUS	ARC LENGTH	Δ
C1	945'	122.04'	07°23'58"

PALM BEACH COUNTY WATER UTILITY EASEMENT PER O.R.B. 21039, PAGE 1796

TANGENT	BEARING	DISTANCE
T1	S87°47'16"E	198.67'
T2	N01°29'47"W	28.19'
T3	S88°04'00"E	20.04'
T4	S01°29'47"E	28.28'
T5	S87°47'16"E	23.36'
T6	S52°02'25"E	86.94'
T7	S85°08'02"E	31.02'
T8	N46°24'35"E	41.14'
T9	N33°52'02"E	32.66'
T10	N55°05'08"E	29.04'
T11	S77°04'34"E	88.40'
T12	N55°05'30"E	19.09'
T13	S75°34'48"E	32.18'
T14	N14°25'12"E	4.28'
T15	S73°11'57"E	19.55'
T16	S16°39'15"W	19.47'
T17	S73°03'41"E	45.82'
T18	S65°25'07"E	87.36'
T19	N22°48'29"E	14.29'
T20	S67°11'31"E	20.00'
T21	S22°48'29"W	16.15'
T22	S57°47'06"E	102.61'
T23	S39°28'21"E	42.85'
T24	S85°13'27"E	50.57'
T25	S35°22'27"E	26.17'
T26	N85°13'27"W	75.89'
T27	N39°26'21"W	48.06'
T28	N57°47'06"W	107.37'
T29	N65°25'07"W	95.50'
T30	N73°03'41"W	64.39'
T31	N16°39'15"E	15.10'
T32	N75°34'48"W	21.60'
T33	S55°05'30"W	18.78'
T34	N77°04'34"W	76.99'
T35	S13°27'20"W	11.86'
T36	N76°32'40"W	10.00'
T37	N13°27'20"E	13.33'
T38	S55°05'08"W	18.53'
T39	S33°52'02"W	31.12'
T40	S46°24'35"W	52.34'
T41	N85°08'02"W	45.96'
T42	N52°02'25"W	86.43'
T43	N87°47'16"W	215.00'
T44	S00°27'20"W	101.82'
T44-1	S10°31'48"E	3.26'
T45	S00°25'51"E	90.72'
T46	N89°01'40"E	26.09'
T47	S00°58'20"E	256.83'
T48	N89°27'51"E	256.01'
T49	N00°41'28"W	11.34'
T50	N89°18'32"E	13.45'
T51	N00°51'16"W	77.52'
T52	N89°08'44"E	20.00'
T53	S00°51'16"E	77.48'
T54	N47°11'00"E	25.15'
T55	S00°58'20"E	11.50'
T56	N89°01'40"E	10.63'
T57	S00°58'20"E	11.00'
T58	N89°01'40"E	255.94'
T59	N47°14'10"E	350.88'
T60	S42°42'18"E	20.00'
T61	S47°14'10"W	358.49'
T62	S89°01'40"W	264.18'
T63	S00°55'46"E	139.77'
T64	S88°31'31"W	41.21'
T65	N45°26'52"E	29.30'
T66	N00°55'46"W	120.78'
T67	S89°27'51"W	334.64'
T68	N01°13'03"W	255.44'
T69	N22°24'36"W	40.98'
T70	N00°25'51"W	59.17'
T71	S85°27'45"W	10.03'
T72	N00°25'51"W	38.19'
T73	S88°43'58"E	9.57'
T74	N00°27'20"E	113.55'

BELLSOUTH TELECOMMUNICATIONS, INC. COMMUNICATION & ELECTRIC UTILITY EASEMENT PER O.R.B. 17161, PAGE 795

TANGENT	BEARING	DISTANCE
T143	S46°50'35"W	328.20'
T144	S22°12'19"W	182.00'
T145	S67°47'41"E	10.00'
T146	N22°12'19"E	179.82'
T147	N46°50'35"E	325.96'
T148	N42°49'00"W	10.00'

PALM BEACH COUNTY WATER & SEWER UTILITY EASEMENT PER O.R.B. 20400, PAGE 1534

TANGENT	BEARING	DISTANCE
T149	S44°36'04"E	23.71'
T150	S02°50'20"W	69.15'
T151	S47°21'28"E	141.96'
T152	N89°10'46"E	77.60'
T153	N43°06'06"E	81.14'
T154	N46°53'54"W	38.23'
T155	S43°06'06"W	20.00'
T156	S46°53'54"E	8.84'
T157	S43°06'06"W	61.68'
T158	S89°10'46"W	48.09'
T159	N47°21'28"W	124.62'
T160	N02°50'20"E	68.57'
T161	N44°36'04"W	31.87'
T162	S47°11'02"W	20.00'

FLORIDA POWER & LIGHT COMPANY UTILITY EASEMENT PER O.R.B. 20468, PAGE 1163

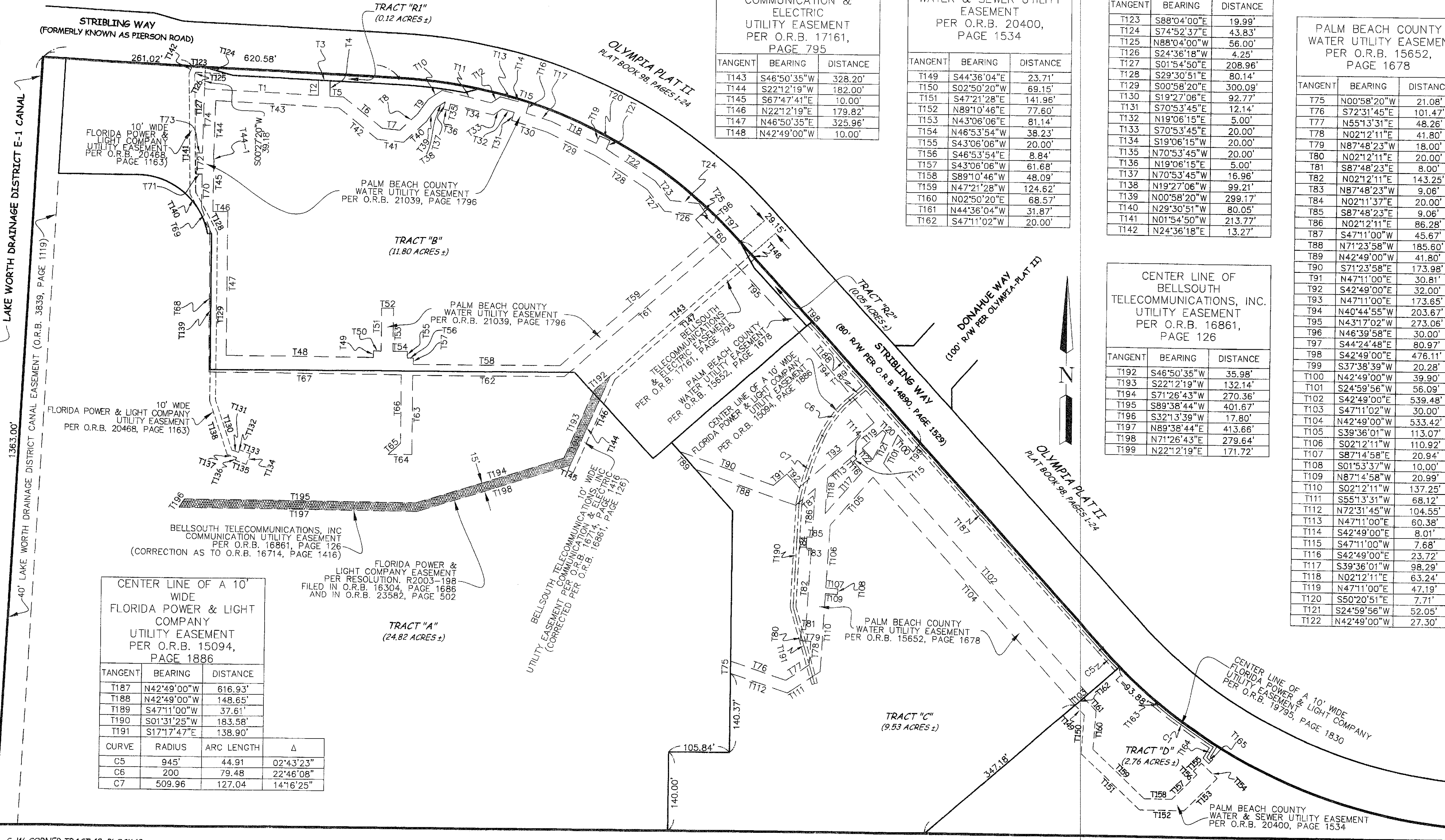
TANGENT	BEARING	DISTANCE
T123	S88°04'00"E	19.99'
T124	S74°52'37"E	43.83'
T125	N88°04'00"W	56.00'
T126	S24°36'18"W	4.25'
T127	S01°54'50"E	208.96'
T128	S29°30'51"E	80.14'
T129	S00°58'20"E	300.09'
T130	S19°27'06"E	92.77'
T131	S70°53'45"E	12.14'
T132	N19°06'15"E	5.00'
T133	S70°53'45"E	20.00'
T134	S19°06'15"W	20.00'
T135	N70°53'45"W	20.00'
T136	N19°06'15"E	5.00'
T137	N70°53'45"W	16.96'
T138	N19°27'06"W	99.21'
T139	N00°58'20"E	299.17'
T140	N29°30'51"W	80.05'
T141	N01°54'50"W	213.77'
T142	N24°36'18"E	13.27'

PALM BEACH COUNTY WATER UTILITY EASEMENT PER O.R.B. 15652, PAGE 1678

TANGENT	BEARING	DISTANCE
T75	N00°58'20"W	21.08'
T76	S72°31'45"E	101.47'
T77	N55°13'31"E	48.26'
T78	N02°12'11"E	41.80'
T79	N87°48'23"W	18.00'
T80	N02°12'11"E	20.00'
T81	S87°48'23"E	8.00'
T82	N02°12'11"E	143.25'
T83	N87°48'23"W	9.06'
T84	N02°11'37"E	20.00'
T85	S87°48'23"E	9.06'
T86	N02°12'11"E	86.28'
T87	S47°11'00"W	45.67'
T88	N71°23'58"W	185.60'
T89	N42°49'00"W	41.80'
T90	S71°23'58"E	173.98'
T91	N47°11'00"E	30.81'
T92	S42°49'00"E	32.00'
T93	N47°11'00"E	173.65'
T94	N40°44'55"W	203.67'
T95	N43°17'02"W	273.06'
T96	N46°39'58"E	30.00'
T97	S44°24'48"E	80.97'
T98	S42°49'00"E	476.11'
T99	S37°36'39"W	20.28'
T100	N42°49'00"W	39.90'
T101	S24°59'56"W	56.09'
T102	S42°49'00"E	539.48'
T103	S47°11'02"W	30.00'
T104	N42°49'00"W	533.42'
T105	S39°36'01"W	113.07'
T106	S02°12'11"W	110.92'
T107	S87°14'58"E	20.94'
T108	S01°53'37"W	10.00'
T109	N87°14'58"W	20.99'
T110	S02°12'11"W	137.25'
T111	S55°13'31"W	68.12'
T112	N72°31'45"W	104.55'
T113	N47°11'00"E	60.38'
T114	S42°49'00"E	8.01'
T115	S47°11'00"W	7.68'
T116	S42°49'00"E	23.72'
T117	S39°36'01"W	98.29'
T118	N02°12'11"E	63.24'
T119	N47°11'00"E	47.19'
T120	S50°20'51"E	7.71'
T121	S24°59'56"W	52.05'
T122	N42°49'00"W	27.30'

CENTER LINE OF BELLSOUTH TELECOMMUNICATIONS, INC. UTILITY EASEMENT PER O.R.B. 16861, PAGE 126

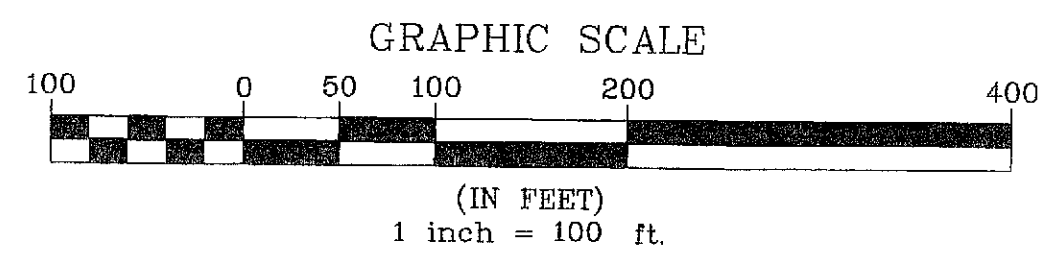
TANGENT	BEARING	DISTANCE
T192	S46°50'35"W	35.98'
T193	S22°12'19"W	132.14'
T194	S71°26'43"W	270.36'
T195	S89°38'44"W	401.67'
T196	S32°13'39"W	17.80'
T197	N89°38'44"E	413.66'
T198	N71°26'43"E	279.64'
T199	N22°12'19"E	171.72'



CENTER LINE OF A 10' WIDE FLORIDA POWER & LIGHT COMPANY UTILITY EASEMENT PER O.R.B. 15094, PAGE 1886

TANGENT	BEARING	DISTANCE
T187	N42°49'00"W	616.93'
T188	N42°49'00"W	148.65'
T189	S47°11'00"W	37.61'
T190	S01°31'25"W	183.58'
T191	S17°17'47"E	138.90'

CURVE	RADIUS	ARC LENGTH	Δ
C5	945'	44.91'	02°43'23"
C6	200'	79.48'	22°46'08"
C7	509.96'	127.04'	14°16'25"



NOTE:
 • THE BEARING DATUM OF ALL RECORDED UTILITY EASEMENTS, AS SHOWN HEREON, WERE ROTATED TO CONFORM WITH THE BEARING DATUM AND DISTANCES OF THIS PLAT.
 (DEED TO PLAT BEARING = 00°21'20" COUNTER CLOCKWISE)
 • THE DIMENSIONS OF THE EXISTING EASEMENTS AS ORIGINALLY RECORDED WILL HOLD PRECEDENCE OVER THE DIMENSIONS SHOWN ON THIS SHEET.

SHEET INDEX

DEDICATIONS AND APPROVALS	- SHEET 1
TRACT BOUNDARIES	- SHEET 2
EASEMENTS BY THIS PLAT	- SHEET 3
EXISTING RECORDED EASEMENTS	- SHEET 4

A & B ENGINEERING, INC.
 Formerly known as Astar & Brady, Inc.
 CONSULTING ENGINEERS • LAND SURVEYORS
 3451 Fairlane Farms Road (961) 383-7480
 Wellington, Florida 33414 Fax: (961) 383-7485
 Website: www.abengineering.net
 E-mail: ab@abengineering.net

OLYMPIA CIVIC SITE
 EXISTING RECORDED EASEMENTS

Dr. JS	F.B. 0-6/1-17
Ck. DP	Date: AUGUST 2010
	Job. No. 08018

FP 2041	SHEET 4 OF 4
---------	--------------