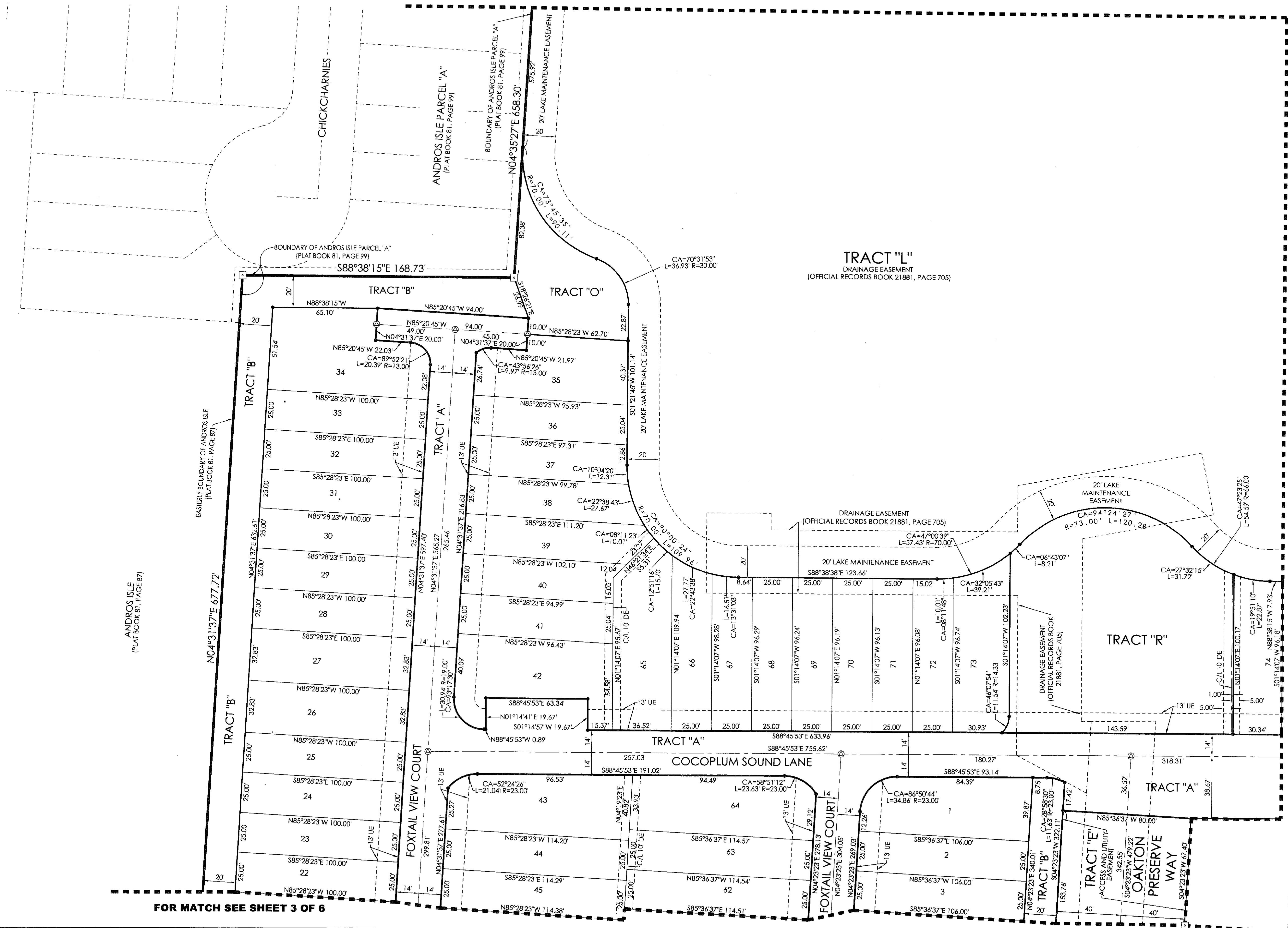
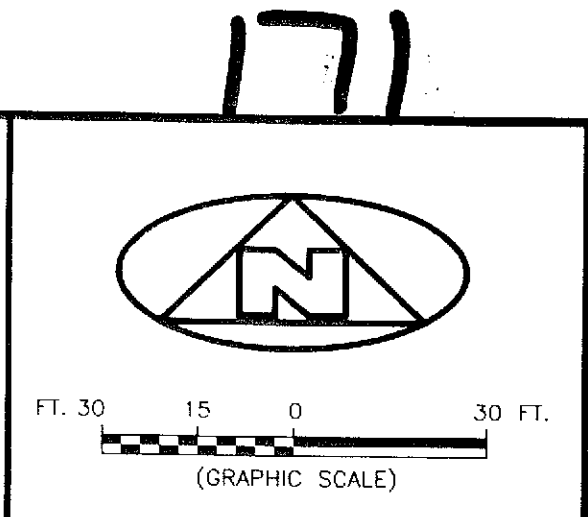


BEING A REPLAT OF TRACT "R", OAKTON COMMONS CPD, RECORDED IN PLAT BOOK 112, PAGE 85, PUBLIC RECORDS, PALM BEACH COUNTY, FLORIDA AND LYING IN SECTION 20, TOWNSHIP 43 SOUTH, RANGE 42 EAST, CITY OF WEST PALM BEACH, PALM BEACH COUNTY, FLORIDA FOR MATCH SEE SHEET 5 OF 6



FOR MATCH SEE SHEET 6 OF 6

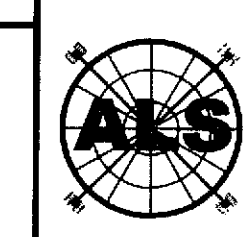
FOR MATCH SEE SHEET 3 OF 6

LEGEND

Table with 2 columns: Symbol and Description. Includes symbols for Radial Line, Centerline, Private Drainage Easement, Utility Easement, Official Records Book, Permanent Reference Monument, Radius Distance, Arc Length Distance, Central Angle, Long Chord Bearing, Chord Distance, and Found Permanent Reference Monument.

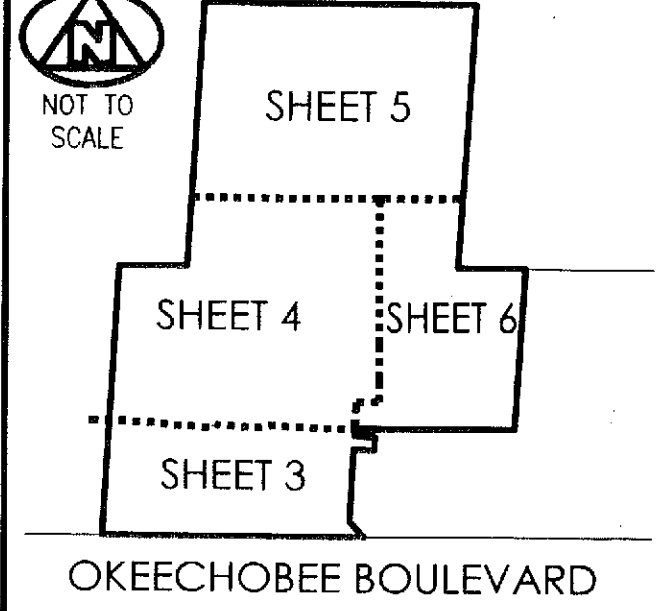
SURVEYOR'S NOTES

- 1. THE BEARING BASIS (BASE BEARING), AS SHOWN HEREON, IS BASED ON THE STATE PLANE GRID AZIMUTH BEARING OF NORTH 88°45'53" WEST, ALONG THE NORTH RIGHT-OF-WAY LINE OF OKEECHOBEE BOULEVARD, AS SHOWN HEREON, AND ALL OTHER BEARINGS ARE RELATIVE THERETO.
2. IN THOSE INSTANCES WHERE UTILITY OR DRAINAGE STRUCTURES ARE CONSTRUCTED IN CONFLICT WITH THE PLATTED PERMANENT CONTROL POINT POSITION STRADDLERS MONUMENTED AS PERMANENT CONTROL POINTS WILL BE SET TO REFERENCE THE PLATTED POSITION.
3. LINES THAT INTERSECT CURVES ARE RADIAL UNLESS OTHERWISE NOTED.
4. THIS INSTRUMENT WAS PREPARED BY STEPHEN L. SHIRLEY, PROFESSIONAL SURVEYOR AND MAPPER NO. 3918, IN AND FOR THE OFFICES OF ASSOCIATED LAND SURVEYORS, INC., 4152 WEST BLUE HERON BOULEVARD, SUITE 121, RIVIERA BEACH, FLORIDA, 33404



ASSOCIATED LAND SURVEYORS, INC.
4152 W. BLUE HERON BOULEVARD-SUITE 121
RIVIERA BEACH FLORIDA 33404 LB 7344
PHONE: (561) 848-2102 FAX: (561) 844-9659 EMAIL: als@alsurvey.net

SHEET INDEX



FILE: Oakton Preserve

SCALE: 1"=30' WO.NO.: P226
DWN: KVC SHEET 4 OF 6