

This Plat was filed for record
at _____ M. this _____ day
of _____ 2009,
and duly recorded in Plat Book
No. _____ on page _____.

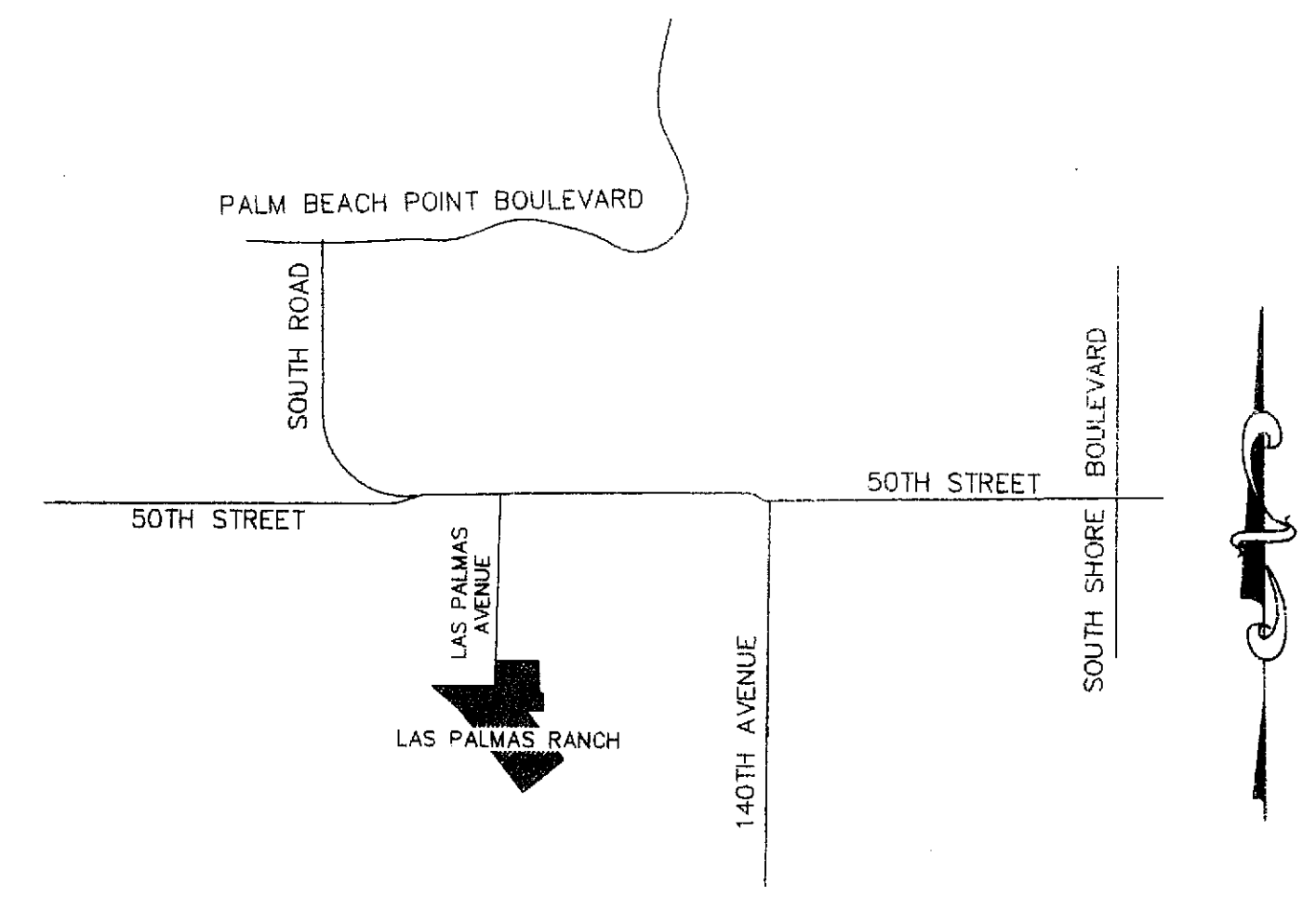
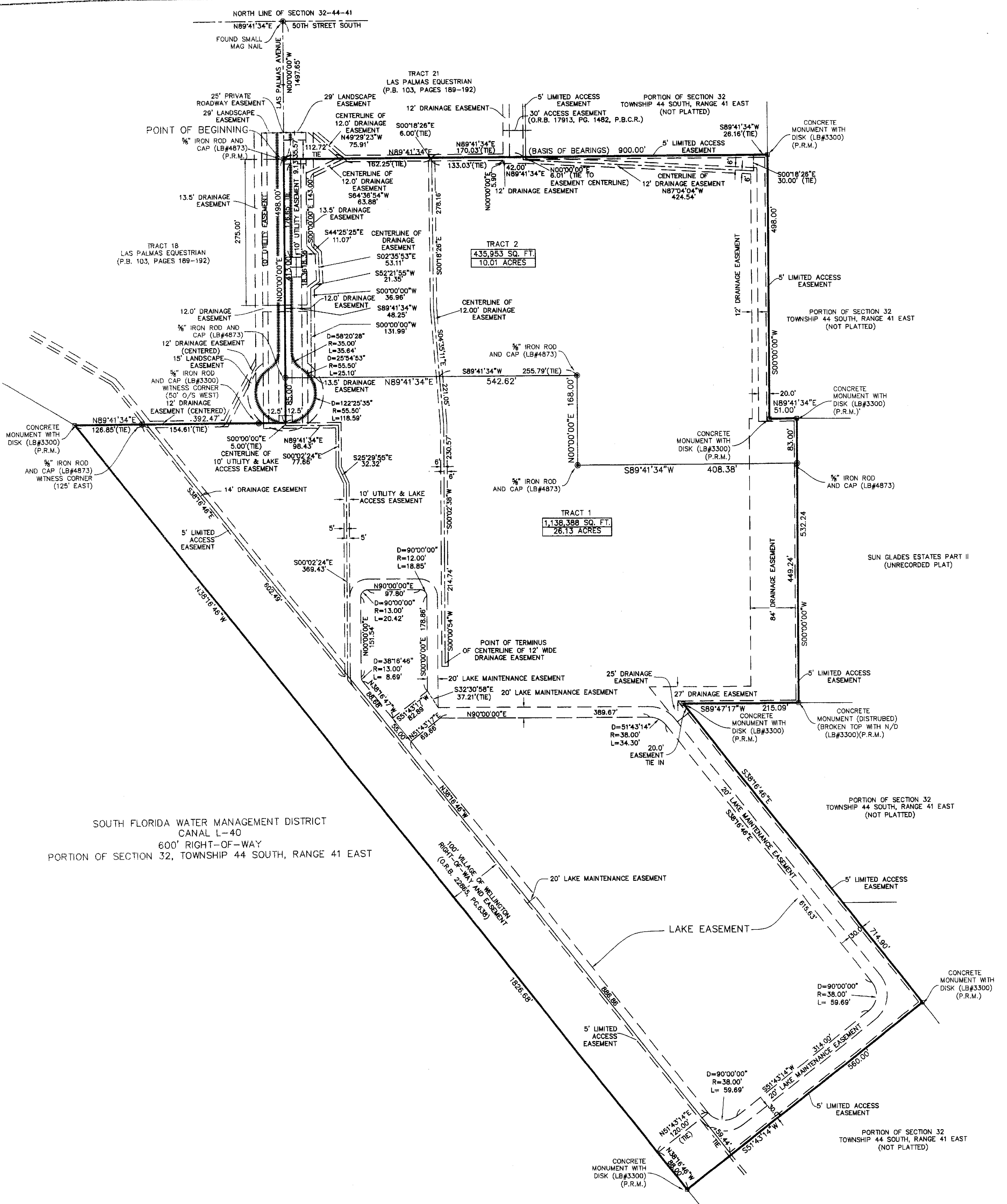
SHARON R. BOCK,
Clerk Circuit Court
& Comptroller

By _____, D.C.

LAS PALMAS RANCH

A REPLAT OF TRACTS 1 AND 20, LAS PALMAS EQUESTRIAN
ACCORDING TO THE PLAT THEREOF, AS RECORDED IN
PLAT BOOK 103, PAGES 189 THROUGH 192, OF THE
PUBLIC RECORDS OF PALM BEACH COUNTY, FLORIDA

LOCATED IN SECTION 32, TOWNSHIP 44 SOUTH,
RANGE 41 EAST
VILLAGE OF WELLINGTON
PALM BEACH COUNTY, FLORIDA
AUGUST, 2009
SHEET 2 OF 2



LOCATION MAP not to scale



GRAPHIC SCALE IN FEET
SCALE: 1" = 100'

LEGEND

- D.B. = Deed Book
- PG. = Page
- P.B. = Plat Book
- P.B.C.R. = Palm Beach County Records
- P.C.P. = Perment Control Point
- PRM or [] = Permanent Reference Monument
- ⊙ = 5/8" Iron Rod and Cap (LB#4873)
- V.O.W. = Village of Wellington
- O.R.B. = Official Record Book
- P/L = Property Line
- = Limited Access Easement

JACK H. CASLER, P.S.M.
FLORIDA CERTIFICATE NO.: LS 2731

FILE NO.
7992
(8-04-09)

Faz: (661) 790-4488 (661) 790-4471

JDC Development Services, Inc. LB#4873

570-A Royal Palm Beach Boulevard,
Royal Palm Beach, Florida, 33411